

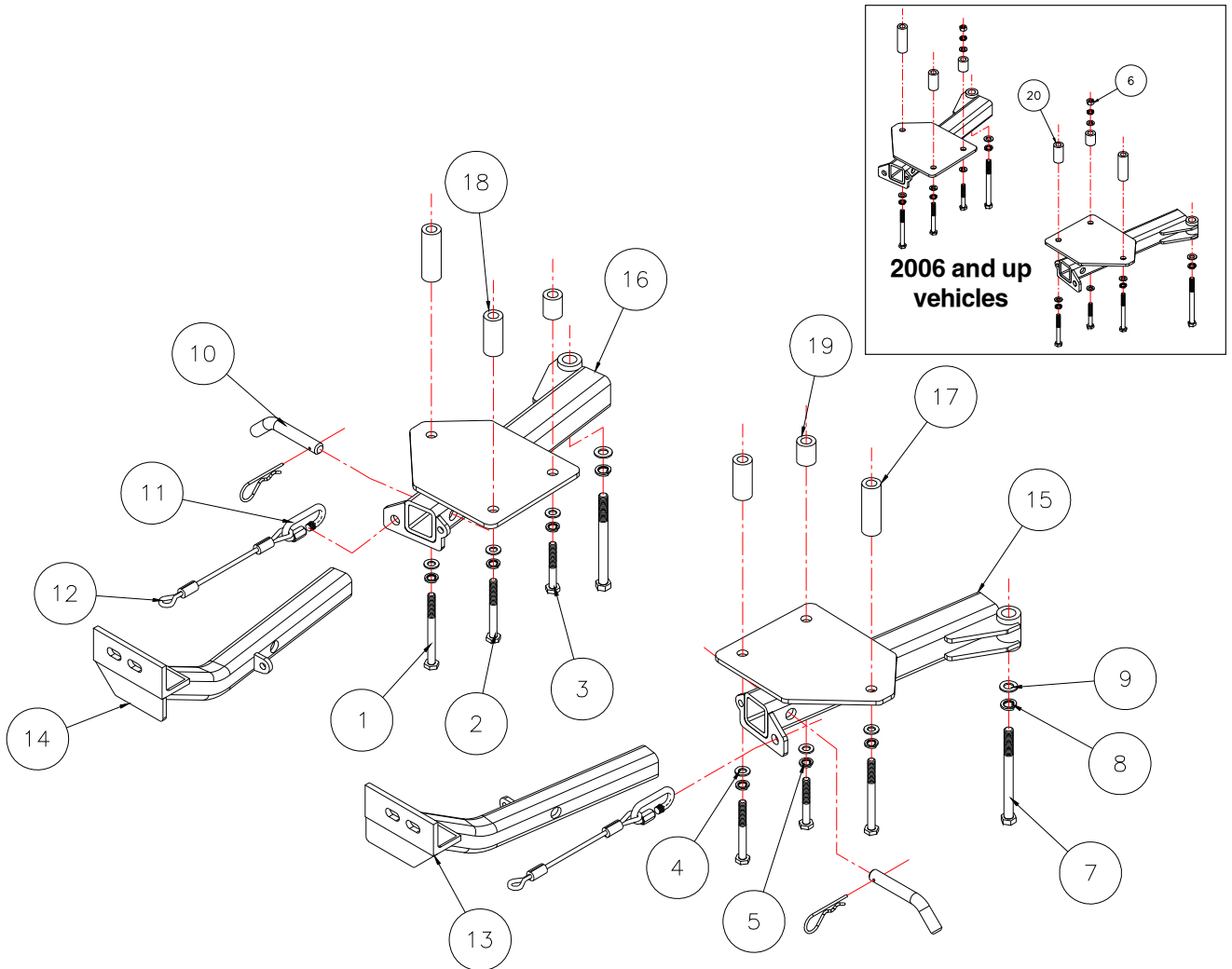


# BASEPLATE KIT INSTALLATION INSTRUCTIONS

**KIT# 913-1**

11/29/07  
KS

ROADMASTER, Inc. 6110 NE 127th Ave. Vancouver, WA 98682 1-800-669-9690 fax 360-735-9300 www.roadmasterinc.com



Item	Qty.	Length	Width	Description	Part#
1	2	110mm	10mm	M10 x 1.25 x 110mm	356209-00
2	2	90mm	10mm	M10 x 1.25 x 90mm	356211-00
3	2	70mm	10mm	M10 x 1.25 x 70mm	356213-00
4	8		10mm	M10 FLAT WASHER	355710-00
5	6		10mm	M10 LOCK WASHER	355715-00
6	2		10mm	M10 x 1.25 NUT	356220-00
7	2	140m	12mm	M12 x 1.25 x 140mm	357009-00
8	2		12mm	M12 LOCK WASHER	355725-00
9	2		12mm	M12 FLAT WASHER	355720-00
10	2			DRAW PIN / SPRING PIN	357035-00
11	2			CONNECTORS	200008-00
12	2	10"		10" SAFETY CABLES	500646-10
13	1			DRIVER SIDE ARM WELDMENT	C-000440
14	1			PASSENGER SIDE ARM WELDMENT	C-000441
15	1			DRIVER SIDE RECEIVER BRACE WELDMENT	C-000438
16	1			PASSENGER SIDE RECEIVER BRACE WELDMENT	C-000439
17	2			1"O.D. x 3" x .219 WALL TUBE	A-000356
18	2			1"O.D. x 2 1/4" x .219 WALL TUBE	A-000621
19	2			1"O.D. x 1 1/4" x .219 WALL TUBE	A-000679
20	2			1"O.D. x 2" x .219 WALL TUBE	A-000943



# BASEPLATE KIT INSTALLATION INSTRUCTIONS

**KIT# 913-1**

11/29/07  
KS

ROADMASTER, Inc. 6110 NE 127th Ave. Vancouver, WA 98682 1-800-669-9690 fax 360-735-9300 www.roadmasterinc.com

This bracket kit is one of our XL series, which is designed to be partly removable. The kit consists of two main receiver braces, front braces and a hardware pack (FIG. A). The main receiver brace mounts under the front bumper fascia to the frame and sub frame on each side. The front braces insert into the receivers on each side. The lower front splash panel will have to be trimmed if refitted. Start by laying the kit out according to the illustration. This will give you a visual idea of how the kit installs and also confirm that the kit components are present and accounted for.



**IMPORTANT:** All baseplates **must** be assembled with all the bolts left loose for final adjustment and positioning (before tightening) unless otherwise instructed. All bolts **must** be torqued for proper strength. If more than one bolt is used per fastening point, the diagram may only show one. Use flat washers over all slotted holes and lock washers on all fasteners.

## **WARNING**

Failure to heed these warnings or follow the installation instructions may result in a voided warranty, loss of towed vehicle, personal injury or death.

- Do not weld or modify this baseplate or its components. Welding or modification will void the warranty.
- Do not use this document as a basis to design/fabricate a baseplate, as it may not show all parts or structural components.
- We strongly recommend professional installation.
- If the towed vehicle has been in an accident, it must be properly repaired before attaching the baseplate. Do not install the baseplate if any structural frame damage is found.
- The installer must use all bolts and parts supplied. If running changes were made by the vehicle manufacturer after this kit was designed, some bolts or other fasteners may no longer be the correct size. It is the installer's responsibility to verify this kit is securely fastened to the vehicle.
- Use Loctite® Red on all bolts used to secure this baseplate. Torque all bolts to the specifications found at the end of these instructions. Do not over-torque the bolts or failure may occur.
- The installer must inspect the baseplate to ensure adequate clearance, particularly around hoses, air conditioner lines, radiators, etc. or non-warranty failure may result.
- Roadmaster manufactures many styles of baseplates. If your baseplate has removable arms, they must be removed before driving the vehicle, unless the arms can be pinned or padlocked in place. If not secured, the arms could vibrate out.
- Some motorhome chassis have such a tight turning radius that you can damage your motorhome, towed vehicle, tow bar or baseplate while turning sharply. Before getting on the road, test your turning radius in an empty parking lot. Turning too sharply could

result in non-warranty damage to your towing system, motorhome and/or towed vehicle.

- Do not back up with the towed vehicle attached or non-warranty damage will occur to your towing system or vehicles.
- The safety cables must connect the towing vehicle to the towed vehicle frame to frame, with the cables crossed, with enough slack for sharp turns. See cable instructions for proper routing. Failure to do so will result in non-warranty damage and/or the loss of the towed vehicle.
- This kit is designed for use with ROADMASTER tow bars and ROADMASTER adapters only. Using this kit with other brands, without an approved ROADMASTER adapter, may result in non-warranty damage or injury.
- Receiver extensions and out-of-level towing situations of 3 inches or more. This can cause the system to swing much higher and lower, causing excessive strain on the tow bar, baseplate and frame. That can cause the towing system to fail, causing property damage, personal injury or even death. If you must use a receiver extension or drop hitch to tow, it will reduce your receiver's weight capacity by 1/3 to avoid damaging your system. Never use more than one extension and/or drop hitch, as this will void your warranty.
- Every 3,000 miles, the owner must inspect all mounting points for cracks or fatigue, and check the fasteners for proper torque, according to the bolt torque requirements chart on the last page of these instructions.
- The owner must follow the vehicle manufacturer's instructions to prepare the vehicle for towing. Failure to do so may cause severe damage to the vehicle.
- This baseplate is only warranted for the original installation. Installing a used baseplate on another vehicle is not recommended and will void the warranty.



# BASEPLATE KIT INSTALLATION INSTRUCTIONS

**KIT# 913-1**

11/29/07  
KS

ROADMASTER, Inc. 6110 NE 127th Ave. Vancouver, WA 98682 1-800-669-9690 fax 360-735-9300 www.roadmasterinc.com



Fig.B



Fig.C



Fig.D

1. **Important:** please use all supplied bolts and parts and read all instructions carefully before beginning this installation. The majority of questions you may have can be answered within the text, and proper installation will ensure safe and secure travel. Now, begin the installation. Start by removing the lower center splash panel or gravel guard (12mm head bolts). Set the splashguard aside after removing (Fig.B). **Note: 2006 models and newer, follow steps 2 through 4. Otherwise, proceed to step 5.**



Fig.E



Fig.F

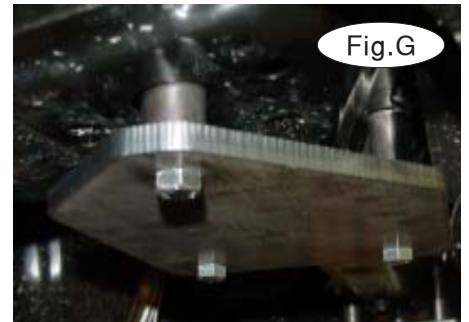


Fig.G

2. Trim the subframe reinforcement. Use the yellow marker line as a guide for correct trimming (Fig.C).

3. Now, unfasten the wiring loom from the core support (Fig.D).

4. Locate the existing hole underneath the area that you trimmed in step 2. The hole is through one layer of the subframe. Using a 1/2" drill bit, drill through the second layer (Fig.E). Use caution not to drill through the wiring harness.

5. Working on one side at a time, remove the large main subframe bolt located in the back (Fig.F) then remove three more 12mm head bolts from the front frame work. **Note: 2006 and newer only have two 12mm (head) bolts to remove.**

6. Hold the appropriate main receiver brace to the bottom of the sub-frame and bolt through the rear of the brace with the included 12mm x 1.25 x 140 bolts, flat washers and lock washers (Fig. F).

7. Bolt through the front outside mounting hole with a 10mm x 1.25 x 110mm bolt, lock washer, flat washer and 3" spacer between the frame and the brace (Fig. G).

8. Bolt through the inside front mounting hole with a 10mm x 1.25 x 90mm bolt, lock washer, flat washer and 2 1/4" spacer (**Note: for a 2006 model and newer, use a 2" spacer**) between the frame and the brace (Fig. G).



Fig.H



Fig.I



# BASEPLATE KIT INSTALLATION INSTRUCTIONS

**KIT# 913-1**

11/29/07  
KS

ROADMASTER, Inc. 6110 NE 127th Ave. Vancouver, WA 98682 1-800-669-9690 fax 360-735-9300 www.roadmasterinc.com

9. For **2006 models and newer**, bolt through the remaining inside mounting hole with a 10mm x 1.25 x 70mm bolt, 10mm flat washer, 1" x 1 1/4" x 2.19 wall pipe spacer (place pipe spacer between the frame and main brace), and on the top of the frame place the 10mm flat washer, lock washer and 10mm x 1.25 nut ( Fig. H). **Other models:** bolt through the remaining inside mounting hole with a 10mm x 1.25 x 70mm bolt, lock washer, flat washer and 1 1/4" spacer between the frame and the brace.

10. Repeat steps 5 through 9 for the remaining side. **2006 Models and newer**, repeat steps 2 through 9.

11. Align the receiver brace and torque all mounting bolts to the torque specifications below (Fig.I).

12. Reinstall the lower center splashguard after trimming to fit around the receiver braces.

13. Insert the front braces into the receiver tubes and secure with 5/8" draw pins and spring pins.

14. Install the tow bar according to the manufacturer's instructions and torque all mounting bolts to the specifications below.

15. Attach one end of the 10" safety cables to front holes on the receiver cross bar on each side of the receiver brace with the included cable connectors (Fig.I). Connect the other end to the tow vehicle's safety cables and tow bar.

## BOLT TORQUE REQUIREMENTS

Note: The torque values represented below are intended as general guidelines. Torque requirements for specific applications may vary. Roadmaster does not warrant this information to be accurate for all applications and disclaims all liability for any claims or damages which may result from its use.

### STANDARD BOLTS

Thread Size	Grade	Torque
5/16	5	13 ft./lb.
3/8	5	23 ft./lb.
7/16	5	37 ft./lb.
1/2	5	56 ft./lb.
5/8	5	150 ft./lb.

### METRIC BOLTS

Thread Size	Grade	Plated/Unplated
8mm-1.0	8.8	20 ft./lb. 18 ft./lb.
8mm-1.25	8.8	19 ft./lb. 18 ft./lb.
10mm-1.25	8.8	38 ft./lb. 36 ft./lb.
10mm-1.5	8.8	37 ft./lb. 35 ft./lb.

### METRIC BOLTS

Thread Size	Grade	Plated/Unplated
12mm-1.25	8.8	70 ft./lb. 65 ft./lb.
12mm-1.5	8.8	66 ft./lb. 61 ft./lb.
12mm-1.75	8.8	65 ft./lb. 60 ft./lb.
14mm-2.0	8.8	104 ft./lb. 97 ft./lb.

All illustrations and specifications contained herein are based on the latest information available at the time of publication approval. ROADMASTER, INC. reserves the right to make changes at any time without notice in material, specification and models or to discontinue models.