

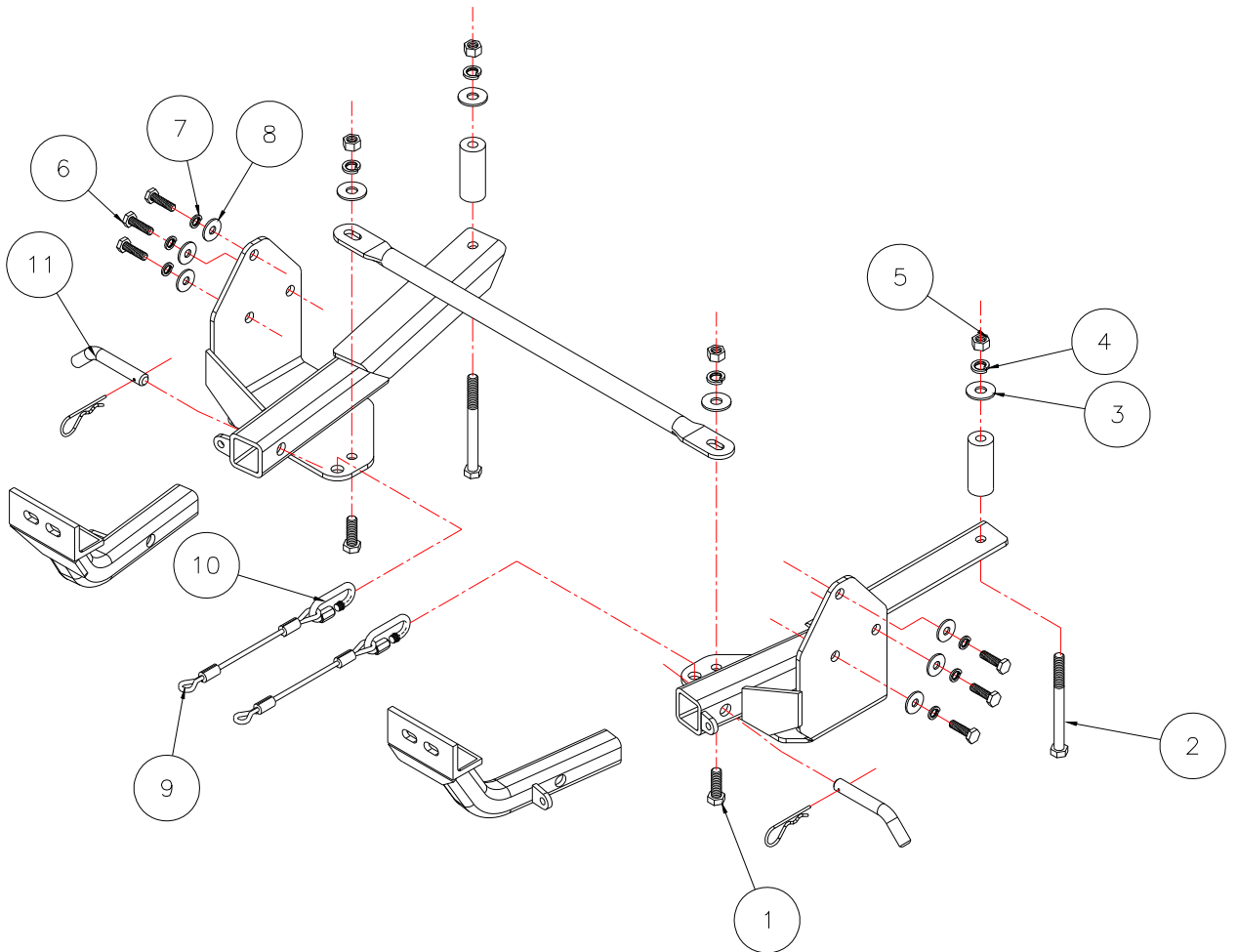


# BASEPLATE KIT INSTALLATION INSTRUCTIONS

**KIT# 915-1**

02/27/08  
KS

ROADMASTER, Inc. 6110 NE 127th Ave. Vancouver, WA 98682 1-800-669-9690 fax 360-735-9300 www.roadmasterinc.com



Item	Qty	Length	Width	Hardware	Part No.
1	2	1 1/2"	1/2"	BOLT	350095-00
2	2	5 1/2"	1/2"	BOLT	350108-00
3	4		1/2"	FLAT WASHER	350308-00
4	4		1/2"	LOCK WASHER	350309-00
5	4		1/2"	NUT	350258-00
6	6	35mm	10mm	10mm x 1.25 x 35mm	356202-00
7	6		10mm	10mm LOCK WASHER	355715-00
8	6		10mm	10mm FENDER WASHER	355710-00
9	2	10"		SAFETY CABLE	500646-10
10	2			CONNECTOR	200008-00
11	2			DRAW PIN / SPRING PIN	357035-00

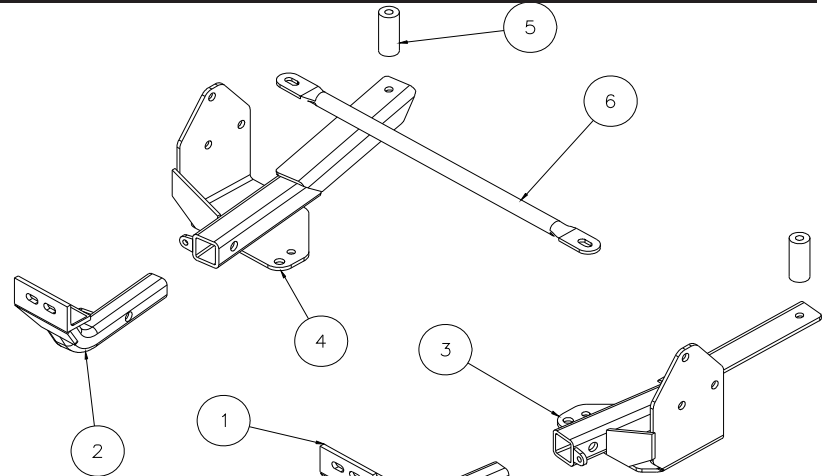


# BASEPLATE KIT INSTALLATION INSTRUCTIONS

**KIT# 915-1**

02/27/08  
KS

ROADMASTER, Inc. 6110 NE 127th Ave. Vancouver, WA 98682 1-800-669-9690 fax 360-735-9300 www.roadmasterinc.com



Item	Qty	Name	Description
1	1	C-000520	DRIVER SIDE ARM WELDMENT
2	1	C-000521	PASSENGER SIDE ARM WELDMENT
3	1	C-000522	DRIVER SIDE RECEIVER BRACE WELDMENT
4	1	C-000523	PASSENGER SIDE RECEIVER BRACE WELDMENT
5	2	A-000924	1 1/4" RD X 3" TUBE SPACER
6	1	B-000369	CROSS BAR

**IMPORTANT:** All baseplates **must** be assembled with all the bolts left loose for final adjustment and positioning (before tightening) unless otherwise instructed. All bolts **must** be torqued for proper strength. If more than one bolt is used per fastening point, the diagram may only show one. Use flat washers over all slotted holes and lock washers on all fasteners.

## WARNING

Failure to heed these warnings or follow the installation instructions may result in a voided warranty, loss of towed vehicle, personal injury or death.

- Do not weld or modify this baseplate or its components. Welding or modification will void the warranty.
- Do not use this document as a basis to design/fabricate a baseplate, as it may not show all parts or structural components.
- We strongly recommend professional installation.
- If the towed vehicle has been in an accident, it must be properly repaired before attaching the baseplate. Do not install the baseplate if any structural frame damage is found.
- The installer must use all bolts and parts supplied. If running changes were made by the vehicle manufacturer after this kit was designed, some bolts or other fasteners may no longer be the correct size. It is the installer's responsibility to verify this kit is securely fastened to the vehicle.
- Use Loctite® Red on all bolts used to secure this baseplate. Torque all bolts to the specifications found at the end of these instructions. Do not over-torque the bolts or failure may occur.
- The installer must inspect the baseplate to ensure adequate clearance, particularly around hoses, air conditioner lines, radiators, etc. or non-warranty failure may result.
- Roadmaster manufactures many styles of baseplates. If your baseplate has removable arms, they must be removed before driving the vehicle, unless the arms can be pinned or padlocked in place. If not secured, the arms could vibrate out.
- Some motorhome chassis have such a tight turning radius that you can damage your motorhome, towed vehicle, tow bar or baseplate while turning sharply. Before getting on the road, test your turning radius in an empty parking lot. Turning too sharply could

result in non-warranty damage to your towing system, motorhome and/or towed vehicle.

- Do not back up with the towed vehicle attached or non-warranty damage will occur to your towing system or vehicles.
- The safety cables must connect the towing vehicle to the towed vehicle frame to frame, with the cables crossed, with enough slack for sharp turns. See cable instructions for proper routing. Failure to do so will result in non-warranty damage and/or the loss of the towed vehicle.
- This kit is designed for use with ROADMASTER tow bars and ROADMASTER adapters only. Using this kit with other brands, without an approved ROADMASTER adapter, may result in non-warranty damage or injury.
- Receiver extensions and out-of-level towing situations of 3 inches or more. This can cause the system to swing much higher and lower, causing excessive strain on the tow bar, baseplate and frame. That can cause the towing system to fail, causing property damage, personal injury or even death. If you must use a receiver extension or drop hitch to tow, it will reduce your receiver's weight capacity by 1/3 to avoid damaging your system. Never use more than one extension and/or drop hitch, as this will void your warranty.
- Every 3,000 miles, the owner must inspect all mounting points for cracks or fatigue, and check the fasteners for proper torque, according to the bolt torque requirements chart on the last page of these instructions.
- The owner must follow the vehicle manufacturer's instructions to prepare the vehicle for towing. Failure to do so may cause severe damage to the vehicle.
- This baseplate is only warranted for the original installation. Installing a used baseplate on another vehicle is not recommended and will void the warranty.



# BASEPLATE KIT INSTALLATION INSTRUCTIONS

**KIT# 915-1**

02/27/08  
KS

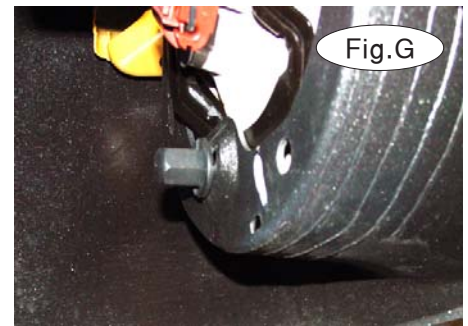
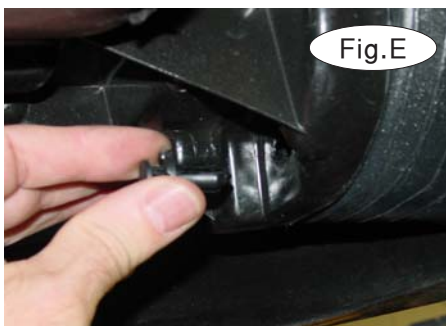
ROADMASTER, Inc. 6110 NE 127th Ave. Vancouver, WA 98682 1-800-669-9690 fax 360-735-9300 www.roadmasterinc.com

This is one of our XL bracket series, which allows the visible front portion of the brackets to be easily removed from the front of the vehicle. The bracket kit consists of two main receiver braces, two front braces, a cross bar, and a hardware pack. The rear receiver braces mount to the bottom and side of the frame. The front braces insert into the rear braces and are pinned in place (Fig.A). The lower bumper fascia will have to be trimmed to fit around the receiver braces. The lower gravel shield will be removed then reinstalled after trimming for clearance. Before starting the installation, lay out the kit components as it is illustrated. This will give you a visual idea of how the components work and also confirm that everything is present and accounted for.



1. **Important:** please use all supplied bolts and parts and read all instructions carefully before beginning this installation. The majority of questions you may have can be answered within the text, and proper installation will ensure safe and secure travel. Now, begin the installation. Begin by removing the lower center gravel shield (five 12mm head bolts and two 10mm head screws) and set it aside (Fig.B,C).

2. Remove two plastic fasteners from the splash panels near the tie down plates on each side (Fig.D,E).



3. Go to the front of the bumper fascia and remove the driving lights on each side (two 10mm head bolts and one 10mm nut per light) (Fig.F,G,H).





# BASEPLATE KIT INSTALLATION INSTRUCTIONS

**KIT# 915-1**

02/27/08  
KS

ROADMASTER, Inc. 6110 NE 127th Ave. Vancouver, WA 98682 1-800-669-9690 fax 360-735-9300 www.roadmasterinc.com

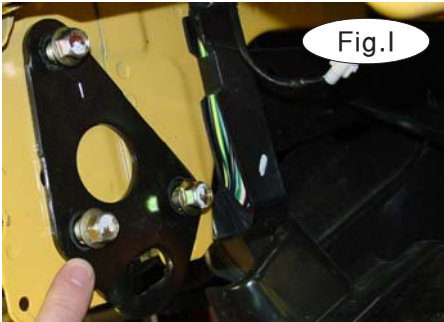


Fig.I

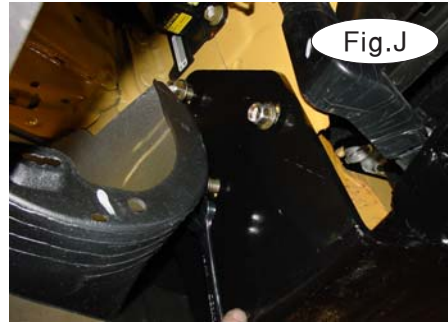


Fig.J

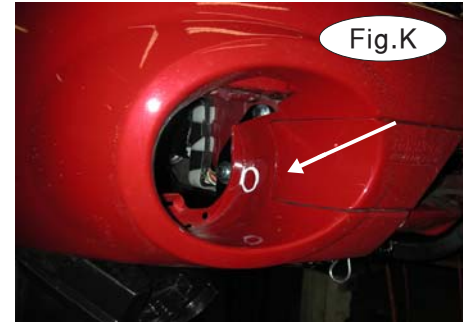


Fig.K

4. With a die-grinder or drill, make a  $\frac{3}{4}$ " (approx.) hole directly over the lower front tie-down bolt (on each side) – refer to the white circle in Fig. K. This will allow you to access the existing bolt and replace it with a new one once the bracket is installed.
5. Working on both sides, remove the front tie down plates (three 14mm head bolts each) (Fig.I).
6. Hold the driver side receiver brace behind the bumper fascia to the side of the frame over the tie down plate mounting area. Take one of the tie down mounting bolts and bolt through the lower rear mounting holes (Fig.J). Swing the brace up against the bottom of the bumper fascia and mark for trimming (Fig.K,L).
7. Trim the bottom of the bumper fascia to clear the brace.
8. Bolt through the side of the brace with the supplied 10mm x 1.25 x 35mm bolts, fender washers and lock washers. Align the brace, then tighten these bolts. This will position the brace for the next step.

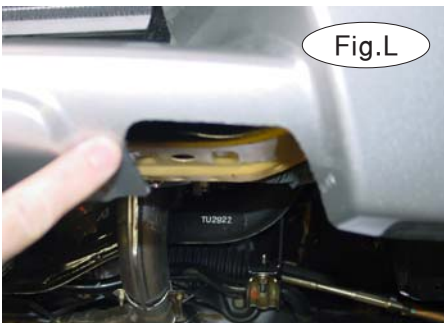


Fig.L



Fig.M

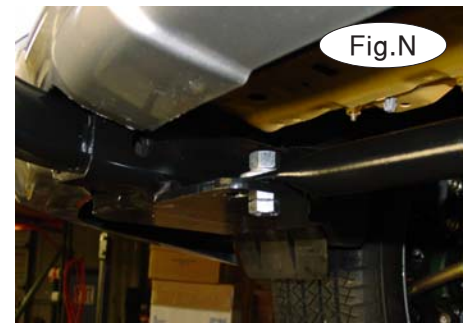


Fig.N

9. Locate the remaining rear mounting hole in the back of the brace and using it as a drill template, drill through this hole and an existing small sq. hole in the bottom of the frame. Drill up through the top of the frame with a  $\frac{1}{2}$ " bit (Fig.M).
10. Using the supplied 3" spacer tube between the bottom of the subframe and the top of the receiver brace, bolt in place with  $\frac{1}{2}$ " x  $5\frac{1}{2}$ " bolts, washers and nut, then repeat steps 6 through 12 on passenger side (Fig.M).
11. On the under side of each receiver brace, there are two holes. Using the rear-most holes, bolt in place the supplied tubular cross member with  $\frac{1}{2}$ " x  $1\frac{1}{2}$ " bolts, washers and nuts.(Fig.N)



# BASEPLATE KIT INSTALLATION INSTRUCTIONS

**KIT# 915-1**

02/27/08  
KS

**ROADMASTER, Inc. 6110 NE 127th Ave. Vancouver, WA 98682 1-800-669-9690 fax 360-735-9300 www.roadmasterinc.com**

12. Trim the sides and front of the lower gravel guard to fit around the braces (Fig.O) and refit, reversing step 1.
13. Insert the front braces into the receiver tubes as illustrated and secure together using supplied draw pins and spring pins.
14. Install the tow bar according to the manufacturer's instructions.
15. Torque all mounting bolts to the specifications below.
16. Install the 10" safety cables to the side of the main receiver portion of the bracket with the quick links provided. Attach the other end to the tow vehicle's safety cables and the tow bar.



## BOLT TORQUE REQUIREMENTS

Note: The torque values represented below are intended as general guidelines. Torque requirements for specific applications may vary. Roadmaster does not warrant this information to be accurate for all applications and disclaims all liability for any claims or damages which may result from its use.

### STANDARD BOLTS

Thread Size	Grade	Torque
5/16	5	13 ft./lb.
3/8	5	23 ft./lb.
7/16	5	37 ft./lb.
1/2	5	56 ft./lb.
5/8	5	150 ft./lb.

### METRIC BOLTS

Thread Size	Grade	Plated / Unplated
8mm-1.0	8.8	20 ft./lb. 18 ft./lb.
8mm-1.25	8.8	19 ft./lb. 18 ft./lb.
10mm-1.25	8.8	38 ft./lb. 36 ft./lb.
10mm-1.5	8.8	37 ft./lb. 35 ft./lb.

### METRIC BOLTS

Thread Size	Grade	Plated / Unplated
12mm-1.25	8.8	70 ft./lb. 65 ft./lb.
12mm-1.5	8.8	66 ft./lb. 61 ft./lb.
12mm-1.75	8.8	65 ft./lb. 60 ft./lb.
14mm-2.0	8.8	104 ft./lb. 97 ft./lb.

All illustrations and specifications contained herein are based on the latest information available at the time of publication approval. ROADMASTER, INC. reserves the right to make changes at any time without notice in material, specification and models or to discontinue models.