



Guardian™ XL MANUAL AND INSTRUCTIONS

#4100

03/25
RS

ROADMASTER, Inc.

6110 NE 127th Ave.

Vancouver, WA 98682

360-896-0407

www.RoadmasterInc.com

What You'll Need

Sockets and Wrench
General Hand tools

IMPORTANT NOTICE!

The Guardian is designed to help reduce the damage to the vehicle while being towed. Although the Guardian will significantly reduce the amount of vehicle damage, the Guardian will not eliminate all damage. *Correspondingly, ROADMASTER expressly disallows any and all claims related to rock chips, dings, scratches or any other damage incurred to the towed vehicle.*

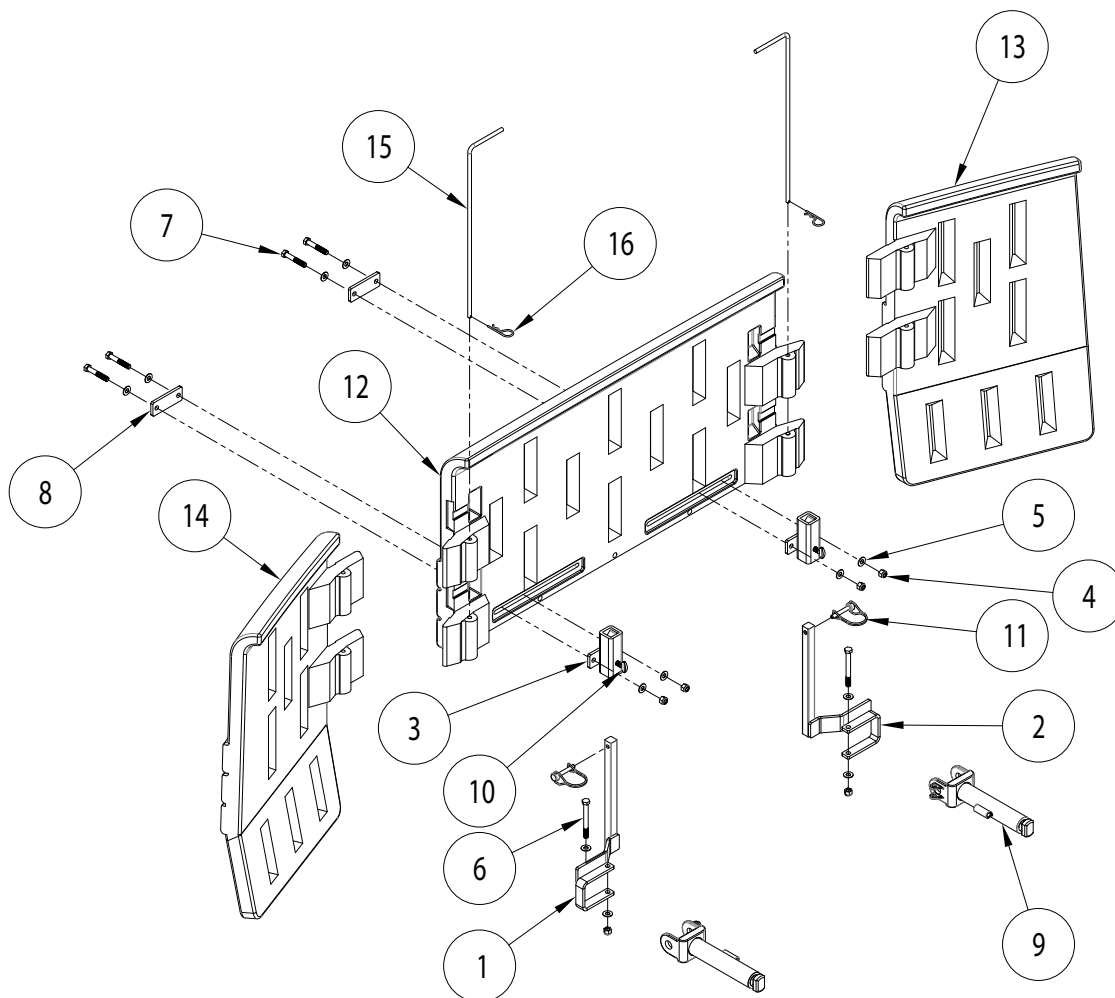


Fig. A

Thank you for choosing the Guardian XL!

Before you begin installation, we recommend laying out all the kit components in order. This simple step not only helps you visualize how each piece works together but also ensures you have everything you need for a seamless setup. If you discover any missing components, don't hesitate to reach out to us so we can assist you right away!

Need Help? Call Toll-Free

1-800-669-9690



| ITEM | QTY. | DESCRIPTION | PART |
|------|------|------------------------------|-----------|
| 1 | 1 | POST CLAMP - DS | C003828 |
| 2 | 1 | POST CLAMP - PS | C003829 |
| 3 | 2 | POST RECEIVER | C003830 |
| 4 | 6 | 3/8" LOCK NUT | 350255-00 |
| 5 | 12 | 3/8" SAE FLAT WASHER | 350304-50 |
| 6 | 2 | 3/8" X 3 1/2" BOLT | 350065-00 |
| 7 | 4 | 3/8-16 x 2 1/4" BOLT | 350060-00 |
| 8 | 2 | MOUNTING PLATE | A006745 |
| 9 | 2 | BASEPLATE ARM - NOT INCLUDED | C002383B |
| 10 | 2 | THUMB SCREW | 357246-00 |
| 11 | 2 | 5/16" SAFETY PIN | 356997-00 |
| 12 | 1 | GUARDIAN CENTER PANEL | A006049 |
| 13 | 1 | GUARDIAN PS PANEL | A006050 |
| 14 | 1 | GUARDIAN DS PANEL | A006051 |
| 15 | 2 | GUARDIAN ROD | B001721 |
| 16 | 2 | 1/8" R-CLIP | 357030-00 |



Table of Contents

Front Page and Parts Diagram..... 1
 Table of Contents and Safety Definitions 2
 Installation Instructions 3,4
 Connection Instructions 4
 Cleaning Instructions 4
 Storage Information 4

IMPORTANT NOTICE!

All illustrations and specifications contained herein are based on the latest information available at the time of publication approval.

ROADMASTER, INC. reserves the right to make changes at any time without notice in material, specification and models or to discontinue models.

IMPORTANT NOTICE!

Safety Definitions

These instructions contain information that is very important to know and understand. This information is provided for **safety** and to **prevent equipment problems**. To help recognize this information, observe the following symbols:



WARNING indicates a potentially hazardous situation which, if not avoided, could result in property damage, serious personal injury, or even death.



CAUTION indicates a potentially hazardous situation which, if not avoided, may result in property damage, or minor or moderate personal injury.

CAUTION

CAUTION used without the safety alert symbol indicates a potentially hazardous situation which, if not avoided, may result in property damage.

NOTE

Refers to important information and is placed in italic type. It is recommended that you take special notice of these items.

BOLT TORQUE REQUIREMENTS

Note: The torque values represented below are intended as general guidelines. Torque requirements for specific applications may vary. Roadmaster does not warrant this information to be accurate for all applications and disclaims all liability for any claims or damages which may result from its use.

STANDARD BOLTS

| Thread Size | Grade | Torque |
|-------------|-------|-------------|
| 5/16-18 | 5 | 13 ft./lb. |
| 3/8-16 | 5 | 23 ft./lb. |
| 7/16-14 | 5 | 37 ft./lb. |
| 1/2-13 | 5 | 57 ft./lb. |
| 5/8-11 | 5 | 112 ft./lb. |

METRIC BOLTS

| Thread Size | Grade | Torque |
|-------------|-------|------------|
| 6mm-1.0 | 8.8 | 6 ft./lb. |
| 8mm-1.0 | 8.8 | 18 ft./lb. |
| 8mm-1.25 | 8.8 | 16 ft./lb. |
| 10mm-1.25 | 8.8 | 36 ft./lb. |
| 10mm-1.5 | 8.8 | 31 ft./lb. |

METRIC BOLTS

| Thread Size | Grade | Torque |
|-------------|-------|------------|
| 12mm-1.25 | 8.8 | 64 ft./lb. |
| 12mm-1.5 | 8.8 | 60 ft./lb. |
| 12mm-1.75 | 8.8 | 55 ft./lb. |
| 14mm-2.0 | 8.8 | 88 ft./lb. |

SAVE THIS MANUAL!

Save this manual for future reference. It contains important sections relative to safety, use, maintenance, parts replacement and other information. Therefore, make sure this manual is always with you when you're towing. You may download or print a copy of the most current manual at www.roadmasterinc.com (under 'Resources').



WARNING

Read all instructions before installing the product. Failure to understand how to install the product could result in property damage, personal injury or even death.



Installation:

1. Confirm that all hardware is included before starting the installation process. The Guardian XL only fits Roadmaster

CAUTION

Do not install the Guardian if the vehicle owner's manual prohibits the use of a vertical towing shield of this type. In this instance use a horizontal shield such as the Tow Defender.

baseplates that are between 19 1/2" and 33 1/2" centered from the baseplate arms.

2. Remove the baseplate arms from the receivers.

3. Attach a post clamp to each arm using the provided hardware (Fig.B). Use a 3/8 x 3 1/2" bolt and washer through the post, capping it off with a washer and nut. Torque the bolts to proper rating (NOTE: See page 2 for torque ratings). Once the clamp and arm are combined, the baseplate arms will be side-specific.

4. Reinsert the baseplate arms, with attached posts, into the side specific to them. Ensure the arms with post are correctly positioned with the posts pointed upward and with assembly facing towards from the license plate (Fig.B, Inset).

5. Insert two bolts with flat washers through each mounting plate and through the front of one of the center panel's channel (Fig.C).

6. On the back of the center panel, attach the post receiver to the mounting plate. Secure each receiver with a washer, then a nylock nut, leaving the bolts loose for now (Fig.D).

CAUTION

The Guardian must not be closer than one inch from the bumper or any other part of the vehicle's body, or permanent damage to the towed vehicle's finish, as well as other consequential, non-warranty damage will occur.

7. Repeat steps 5 and 6 for the other side.

8. Align the post receivers and center panel with the posts on the baseplate arms, adjust the position of the post receivers along the channels as needed. When adjusted correctly, the center panel should freely slide up and down.

continued on next page...



Fig.B



Fig.C



Fig.D

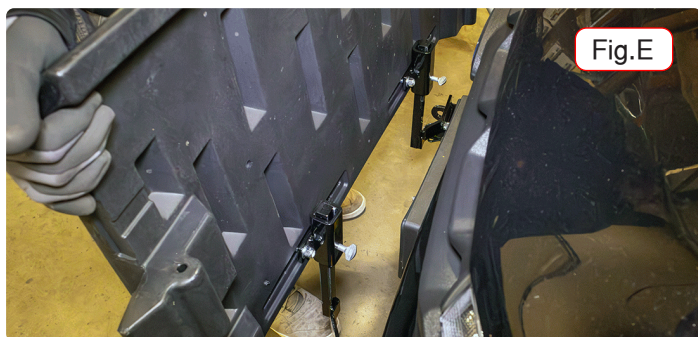


Fig.E



...continued from last page

bolts, securing the mounting plates to center panel hardware (Fig.E, Prior Page).

9. Use the provided safety pins to secure the Guardian to the posts. Failure to do so can result in the Guardian XL coming off during transit (Fig.F).

10. Use the thumb screws to adjust the height of the center panel position for maximum protection of the vehicle. The Guardian XL should not hang too low as it may hit road debris. Tighten the thumbscrews once the proper height is found.



Fig.F

CAUTION

If the thumb screws are not tightened, the Guardian may vibrate loose during towing, which can cause property damage, personal injury or even death.

11. Attach the side panels to the center panel and secure them in place using one of the Guardian rods. Use an R-clip to secure the rod in place (Fig.G).

12. The vehicle may now be towed. Connect your towbar to the baseplate arms as normal. Do NOT drive the vehicle while the Guardian XL is installed, please remove the Guardian and stow away when not in use.



Fig.G

WARNING

Be certain that the baseplate arms are locked into the baseplate, according to the instructions, before towing. Incorrect assembly will cause the towing system to fail – the towed vehicle will separate from the motorhome.

CAUTION

Do not drive the towed vehicle with the Guardian in place. The engine will overheat, which can cause severe damage to the engine.

CAUTION

Keep the Guardian away from direct heat sources, such as exhaust systems or furnace vents – the plastic will melt.

To connect the Guardian...

1. Slide post receivers onto the baseplate post arms, set at the proper height, then tighten the thumb screws. Install the safety pins through posts.
2. Align both of the side panel tabs to the center panel, and install the connecting rods. Secure with R-clips.
3. To disconnect, simply do this in reverse.

To store the Guardian...

Remove the side panels, rotate them 180 degrees, and reattach them behind the center panel.

To clean the Guardian...

1. To remove bugs or road dirt, clean with Voom™ RV (part number 9911) and a light scrub. Rinse with water.
2. Roadmaster recommends using a silicone spray (part number 747) to coat the guardian. This will provide a slick surface for easier removal of bugs, tar, and other road debris.
3. Wire brushes, acids, flame or heat will damage the Guardian. Solvents will damage the Guardian logo.