



# Installation Instructions

*Thank you for purchasing our anti-sway bar kit. Please read through these instructions before installation.*

## Rear Anti-Sway Bar Kit for the Chevy Suburban 1992-on (w/ O.E bar)

part #1109-142 1-1/8" diameter

### INTRODUCTION

Thank you for purchasing this anti-sway bar kit. This kit is designed to improve the handling characteristics of your Suburban by reducing the body roll and balancing the weight transfer during cornering. The anti-sway bar kit is engineered for long life and trouble-free performance.

All the hardware needed for installation is included in this kit. Refer to the PARTS LIST in these instructions to identify the parts.

### SUGGESTED TOOLS

The following tools are suggested to complete the installation procedures:

- 9/16" & 5/8" Sockets
- Rat-tail file
- Medium-size screwdriver
- Jack stands
- 9/16" & 5/8" Wrenches
- Floor jack

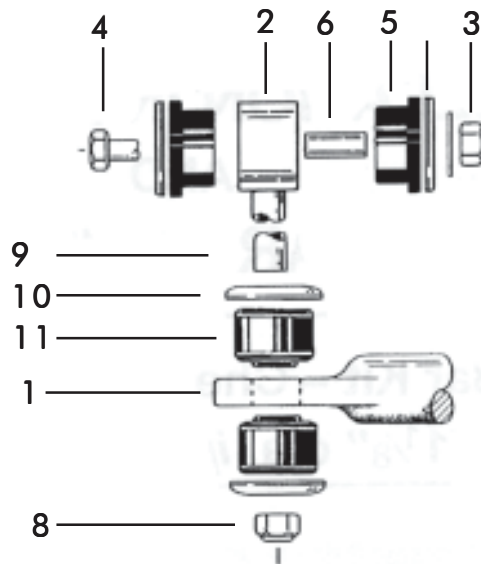
### WARNING

- If raising the vehicle to install the anti-sway bar, always support the vehicle with jack stands at both frame rails or at the rear axle before working underneath. Ensure that the jack stands are securely positioned, and are rated at or above the weight of the vehicle.
- The installer must read the instructions and use all bolts and parts supplied. Use only the parts supplied by ROADMASTER to install this kit.
- Minor modifications are sometimes necessary due to slight vehicle variations, even for the same year, make and model.
- If running changes were made by the manufacturer after this kit was designed, there may be weldments, braces, gussets, or other structural items which interfere with the installation. It is the installer's responsibility to allow for these running changes without sacrificing the structural integrity of the anti-sway bar. Failure to securely fasten the anti-sway bar could result in property damage, personal injury or even death.
- ROADMASTER will not be responsible for any damage or injury resulting from any modification or alteration.
- Check ALL the fasteners for tightness before and after road testing the vehicle.
- Do not use this document for custom fabrication, as it may not show all parts or structural components.
- Do not use an air impact wrench when re-installing bolts, as stripped threads may result.
- This anti-sway bar is only warranted for the original installation. Installing a used anti-sway bar on another vehicle is not recommended and will void the warranty.

### WARNING

**Failure to follow these instructions can result in property damage, personal injury or even death.**

# PARTS LIST



## Part #1109-142

Part #	Description	Qty	Part #	Description	Qty
1.	580057-00 Sway bar, 1" diameter	1	8.	350256-02 Locknut, 7/16" NC	2
2.	B226 Bracket, end-link	2	9.	205502-00 Spacer tube 4"	2
3.	350255-00 Locknut, 3/8" NC	2	10.	357434-00 Washer, cup	4
4.	350063-00 Bolts, 3/8" x 2 1/2" NC	2	11.	205381-00 Grommet, poly	4
5.	205223-00 Bushings, hat	4	12.	400013-00* Aqualube, Grease	1
6.	205505-00 Sleeve	2			
7.	205236-10* Bushing, poly	2			

\*not pictured

# INSTALLATION

The following instructions must be followed in the order listed to ensure a proper installation and to preserve the ROADMASTER warranty.

**1. Support the vehicle and remove the rear wheels (optional).**

- A. Use a floor jack to raise the vehicle.  
Put the vehicle in neutral. Put a floor jack under the frame and raise the vehicle so that the tires are off the ground.

## WARNING

If raising the vehicle to install the anti-sway bar, always support the vehicle with jack stands at both frame rails or at the rear axle before working underneath. Ensure that the jack stands are securely positioned, and are rated at or above the weight of the vehicle. Failure to follow these instructions may cause property damage, personal injury or even death.

**2. Put the jack stands under the axle.**

Place the jack stands under the rear axle housing to correctly locate the mounting points for the links. Lower the axle housing onto the jack stands. Push the side of the body to make sure that the vehicle is stable.

**3. Remove the factory anti-sway bar and endlinks.**

Disconnect the bar from the endlinks and remove from the axle. Remove the factory endlinks from the frame brackets (Figure 3).

**4. Assemble the endlinks.**

Refer to the parts list drawing for assembly order. DO NOT TIGHTEN the bolts at this time. Allow the links to swing freely under the vehicle.

**6. Prepare the anti-sway bar for installation.**

Lubricate the inside of the U-clamp bushings as shown with the grease provided (Figure 2).

Figure 1

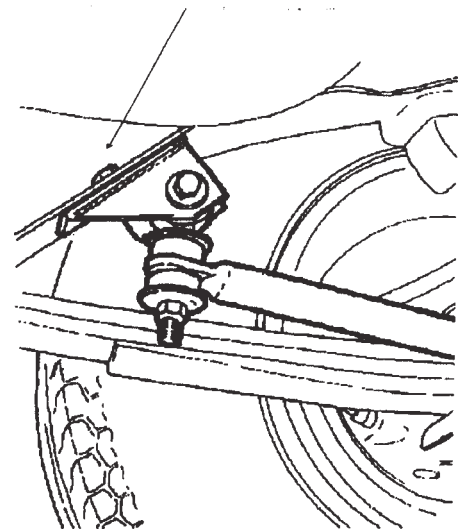
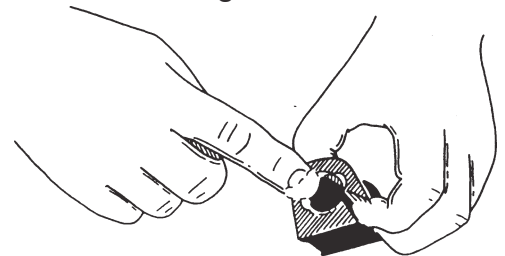


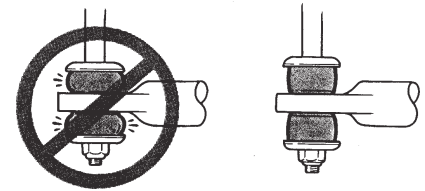
Figure 2



# INSTALLATION

- 9. Put the bushings over the bar and locate them as indicated.**  
Use the factory anti-sway bar to help determine the location of the bushings on the new anti-sway bar.
- 10. Push the saddle brackets over the bushings.**  
Push the saddle brackets over the bushings as shown in the parts list drawing.
- 11. Lift the anti-sway bar into place.**
- 12. Place the saddle brackets on the axle mounting bolts.**
- 13. Start the nuts onto the U-bolts.**  
Tighten nuts to 30 ft-lbs.
- 14. Attach the anti-sway bar to the endlinks.**
- 15. Tighten the endlink bolts and the grommet nuts.**  
Do not over tighten (Figure 3).
- 16. Test drive and re-check all fasteners.**

Figure 3



## **WARNING**

After road testing, re-check all fasteners for proper tightness — if a fastener has worked loose or fallen off, re-tighten or replace it. Without all kit components properly tightened or in place, the anti-sway bar will not stabilize the vehicle at full capacity, which may cause reduced cornering ability or other reductions in vehicle handling or performance.

Failure to follow these instructions may result in property damage, personal injury or even death.

## **WARNING**

### **The anti-sway bar is not a load-bearing component**

Do not tow or hoist the vehicle using the anti-sway bar or its mounting brackets as attachment points. The anti-sway bar is not designed to carry the weight of the vehicle and may collapse, which will damage the sway bar components, the suspension, or other components. The vehicle will detach or fall, which may cause severe personal injury.

Failure to follow these instructions may result in property damage, personal injury or even death.