



Installation Instructions

Thank you for purchasing this anti-sway bar kit. Please read through these instructions before installation.

Rear Anti-Sway Bar Kit for Chevrolet Silverado Dually and Single Rear Wheel Axle

part #1109-171 1 1/4" diameter



INTRODUCTION

Thank you for purchasing this rear anti-sway bar kit. This kit is designed to improve the handling characteristics of your motorhome by reducing the body roll and balancing the weight transfer during cornering. The anti-sway bar kit is engineered for long life and trouble-free performance. For maximum suspension control, use this kit along with our shock absorbers and our front sway bar kit.

SUGGESTED TOOLS

The following tools are suggested to complete the installation procedures:

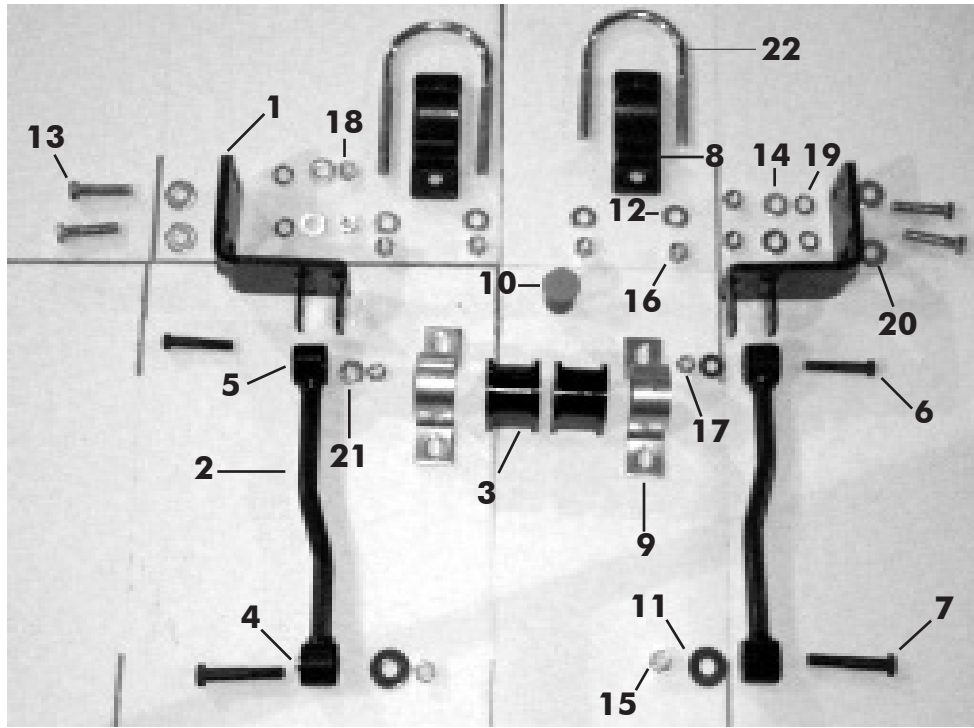
- General Hand Tools

WARNING

Failure to follow these instructions can result in property damage, personal injury or even death.

- If raising the vehicle to install the anti-sway bar, always support the vehicle with jack stands at both frame rails or at the rear axle before working underneath. Ensure that the jack stands are securely positioned, and are rated at or above the weight of the vehicle.
- The installer must read the instructions and use all bolts and parts supplied. Use only the parts supplied by ROADMASTER to install this kit.
- Minor modifications are sometimes necessary due to slight vehicle variations, even for the same year, make and model.
- Regardless of year, make and model, a wide range of options for specific applications may or may not interfere with the installation. It is the installer's responsibility to make certain that equipment is not damaged once the suspension solution travels through the full range of motion. Failure to ensure adequate clearance could result in non-warranty property damage, personal injury or even death.
- If running changes were made by the manufacturer after this kit was designed, there may be weldments, braces, gussets, or other structural items which interfere with the installation. It is the installer's responsibility to allow for these running changes without sacrificing the structural integrity of the anti-sway bar. Failure to securely fasten the anti-sway bar could result in property damage, personal injury or even death.
- ROADMASTER will not be responsible for any damage or injury resulting from any modification or alteration.
- Check ALL the fasteners for tightness before and after road testing the vehicle.
- Do not use this document for custom fabrication, as it may not show all parts or structural components.
- Do not use an air impact wrench when re-installing bolts, as stripped threads may result.
- This anti-sway bar is only warranted for the original installation. Installing a used anti-sway bar on another vehicle is not recommended and will void the warranty.

PARTS LIST



Part #1109-171

Part #	Description	Qty
1	B610 Frame Bracket	2
2	B611 End Link	2
3	205223-00 Bushing	8
4	205508-00 Metal Sleeve	2
5	205501-00 Metal Sleeve	2
6	350078-80 7/16" x 2 1/2" NC GR8 PLN	2
7	350101-80 1/2" x 3" NC GR8 PLN	2
8	480013 Casting Plate B-155	2
9	B141 Bracket	2
10	400011-30 Aqua Lube Grease	1
11	350347-00 9/16" Cut Flat Washer	2

12	350308-40 1/2" D Cut Washer	2
13	357206-00 M12 1.75 x 55 CS Zip	4
14	350308-20 1/2" Flat Washer	4
15	350259-00 1/2" NC Nylon Ins Ln Zp	2
16	350259-01 1/2" NF Nylon Locknut	4
17	350256-02 7/16" Locknut	2
18	357212-00 M12 x 1.75 Hex Nut	4
19	350733-00 1/2" Lock Washer	4
20	350306-00 7/16" USS Cut Washer Zp	4
21	350304-80 3/8" Cut Washer	2
22	357359-00 U-bolt	2
23	205221-10* Bushing	2
24	580222-00* Anti-swaybar	1

*Not shown

INSTALLATION

The following instructions must be followed in the order listed to ensure a proper installation and to preserve the ROADMASTER warranty.

1. Remove the spare tire.
2. Put the U-bolts around the axle, just inside the shock bracket (Figure 1). Make certain the brake lines are out of the way. *Note:* the driver's side u-bolt mounts through the shock bracket.
3. Locate the two holes closest to the crossmember toward the back side of the rear axle. Insert the supplied 357206-00 bolts and 350308-20 washers from the outside of the frame rail through the existing holes (Figure 2).
4. On both sides, secure the B610 frame brackets with a flat washer, lock washer and metric nut. Finger tighten only at this time. *Note:* on the dually, the frame bracket mount requires removing the forward two bolts of the rear spring overload bump stop. Remount with the supplied hardware.
5. Install the B611 end link to the frame bracket using the 7/16" hardware (Figure 3). *Note:* the sleeves in the endlink are two different sizes. The 7/16" hardware should connect to the frame bracket; the 1/2" hardware should hang down at this time.

Continued on next page

WARNING

The anti-sway bar is heavy, and may cause property damage or personal injury if it falls on equipment, engine components or any part of your body. Ensure that the anti-sway bar is supported and that you are out of the way when removing the brackets.

Failure to follow these instructions may cause property damage, personal injury or even death.

Figure 1

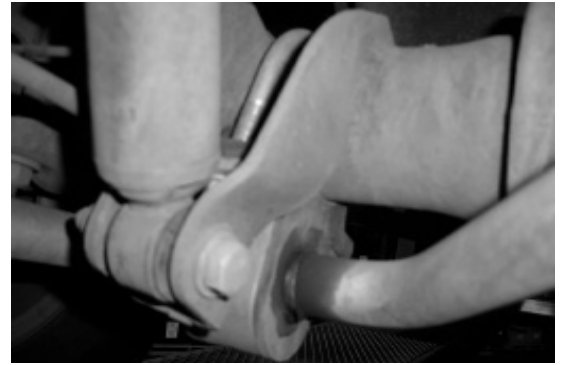


Figure 2

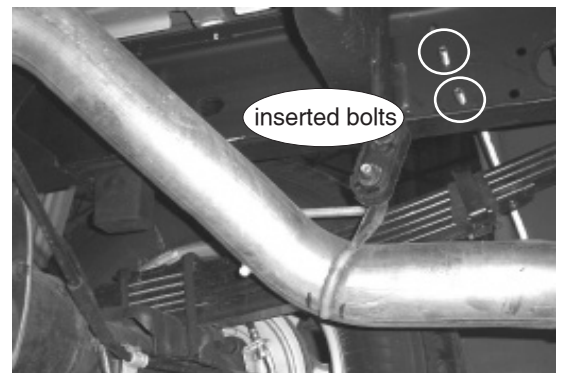
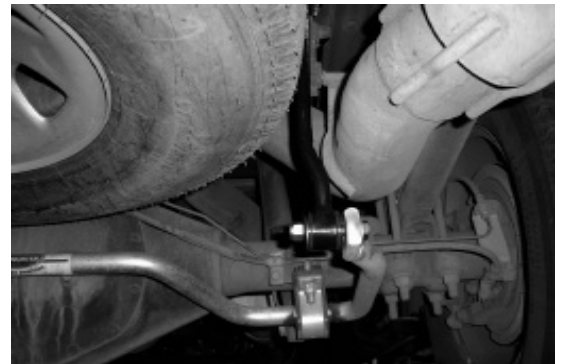


Figure 3



INSTALLATION

The following instructions must be followed in the order listed to ensure a proper installation and to preserve the ROADMASTER warranty.

Continued from previous page

6. Hang the bar from the endlinks. The dip in the bar should face up (Figure 4). The passenger side is shown.
7. Using the supplied Aqua Lube, grease the bushings at this time (Figure 5).
8. Place the B155 brackets under the U-bolts. The bushings will ride close to the center dip. Install the D-cut washer and 1/2" locknut to secure the U-bolts in place (Figure 6).
9. Tighten all bolts at this time.
10. Remount the spare tire.
11. Test drive and recheck all fittings. Adjust as deemed necessary.

Figure 4



Figure 5

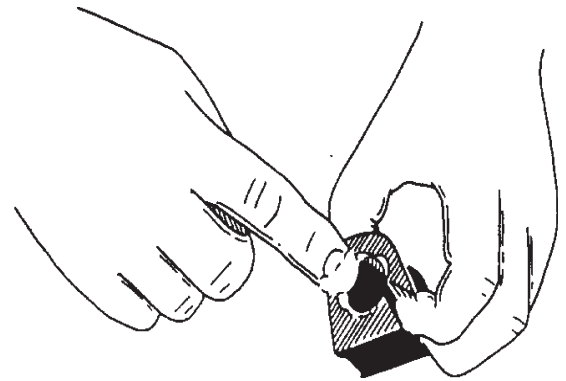


Figure 6

WARNING

The anti-sway bar is not a load-bearing component

Do not tow or hoist the vehicle using the anti-sway bar or its mounting brackets as attachment points. The anti-sway bar is not designed to carry the weight of the vehicle and may collapse, which will damage the anti-sway bar components, the suspension, or other components. The vehicle will detach or fall, which may cause severe personal injury.

Failure to follow these instructions may result in property damage, personal injury or even death.

