



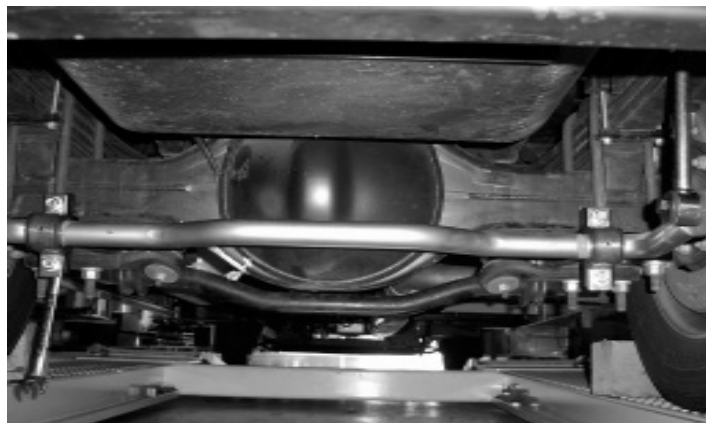
# Installation Instructions

Thank you for purchasing anti-sway bar kit. Please read through these instructions before installation.

## Auxiliary Rear Anti-Sway Bar Kit for Kodiak 4500-5500

part #1109-174 1-5/8" diameter

Note: for use with vehicles equipped with Granning Air Ride systems only



**Note: do not remove the factory anti-sway bar. This kit is designed to support the factory anti-sway bar — not replace it.**

## INTRODUCTION

Thank you for purchasing this anti-sway bar kit. This kit is designed to improve the handling characteristics of your Kodiak 4500/5500 by reducing the body roll and balancing the weight transfer during cornering. The anti-sway bar kit is engineered for long life and trouble-free performance. For maximum suspension control, use this kit along with our front anti-sway bar kit. All the hardware needed for installation is included in this kit. Refer to the PARTS LIST in these instructions to identify the parts.

## SUGGESTED TOOLS

The following tools are suggested to complete the installation procedures:

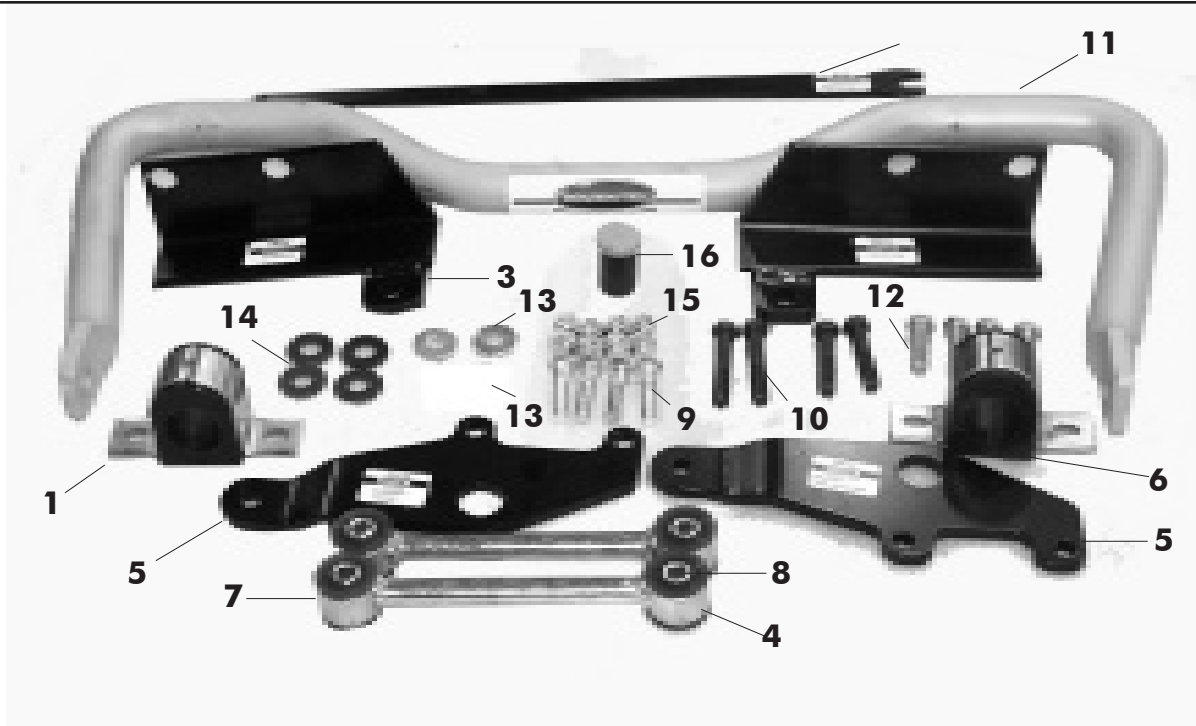
- Standard socket and wrenches

### **⚠ WARNING**

**Failure to follow these instructions can result in property damage, personal injury or even death.**

- If raising the vehicle to install the anti-sway bar, always support the vehicle with jack stands at both frame rails or at the rear axle before working underneath. Ensure that the jack stands are securely positioned, and are rated at or above the weight of the vehicle.
- The installer must read the instructions and use all bolts and parts supplied. Use only the parts supplied by ROADMASTER to install this kit.
- Minor modifications are sometimes necessary due to slight vehicle variations, even for the same year, make and model.
- Regardless of year, make and model, a wide range of options for specific applications may or may not interfere with the installation. It is the installer's responsibility to make certain that equipment is not damaged once the suspension solution travels through the full range of motion. Failure to ensure adequate clearance could result in non-warranty property damage, personal injury or even death.
- If running changes were made by the manufacturer after this kit was designed, there may be weldments, braces, gussets, or other structural items which interfere with the installation. It is the installer's responsibility to allow for these running changes without sacrificing the structural integrity of the anti-sway bar. Failure to securely fasten the anti-sway bar could result in property damage, personal injury or even death.
- ROADMASTER will not be responsible for any damage or injury resulting from any modification or alteration.
- Check ALL the fasteners for tightness before and after road testing the vehicle.
- Do not use this document for custom fabrication, as it may not show all parts or structural components.
- Do not use an air impact wrench when re-installing bolts, as stripped threads may result.
- This anti-sway bar is only warranted for the original installation. Installing a used anti-sway bar on another vehicle is not recommended and will void the warranty.

# PARTS LIST



## Part #1109-174

Part #	Description	Qty			Qty
1 B141	Bracket	2	12 350096-80	1/2" x 1 3/4" NC bolt	4
2 B629	Front bracket left	1	13 350308-00	Cut washer	2
3 B630	Front bracket right	1	14 350347-00	9/16" cut washer	4
4 B451	End link	2	15 350259-00	1/2" NC nylon nut	12
5 B606	Bracket	1	16 400011-30	Aqualube grease	1
6 205222-10	Bushing	2	17 B700	3/4" Wrench	1
7 205223-50	Bushing	8	18 *350308-40	1/2" Cut washer	4
8 205522-00	Sleeve	4	19 *B619	Bracket	1
10 350101-80	1/2' x 3" NC bolt	2	20 *350097-00	1/2" x 2" NC GRD5	4
11 580272-00	Anti-sway bar	1	21 *350099-80	1/2" x 2-1/2" NC GRD8	2
9 350099-80	Bolt	2			

\* Not shown

# INSTALLATION

The following instructions must be followed in the order listed to ensure a proper installation and to preserve the ROADMASTER warranty.

## 1. Install the Frame Brackets

*Note:* do not remove the factory anti-sway bar. This kit is designed to support the factory anti-sway bar — not replace it. Start by removing the two mounting bolts on the rear leaf spring hanger bracket. There are three bolts on each side of the leaf spring hanger, and we are using the upper and the lower bolts (middle bolt is not used) on the forward side of the hanger. Attach the bracket so that the larger hole is on the axle side. A  $\frac{3}{4}$ " wrench is included in the kit for this job (Figure 1, 2, 3, 4, 5).

## 2. Install the Axle Brackets

Loosen all four of the u-bolt nuts on each side. Remove the rear u-bolt nuts and install the bracket. Re-tighten all ubolt nuts in an X pattern. Be sure the lower axle plate is seated flush and torque to the manufacturer's specifications (Figure 7, 8).

Figure 1

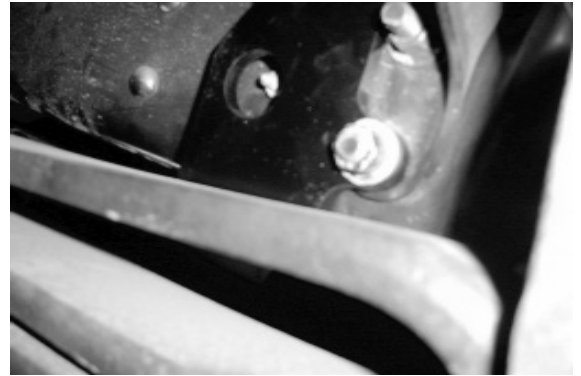


Figure 2

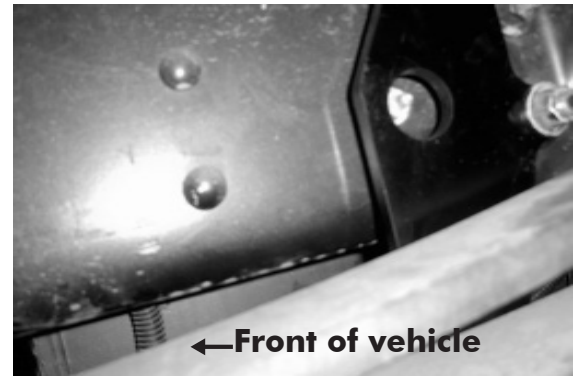


Figure 3

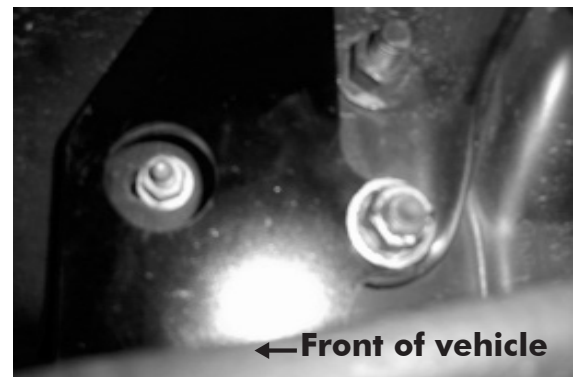


Figure 4

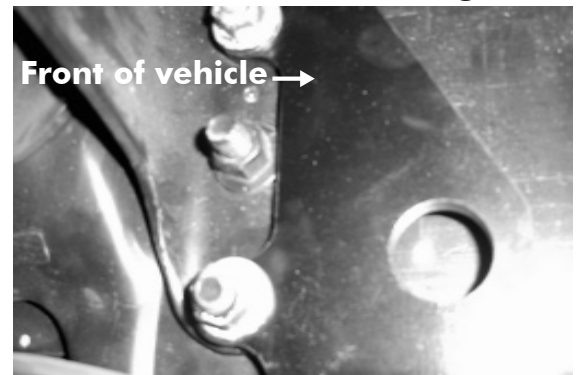


Figure 5

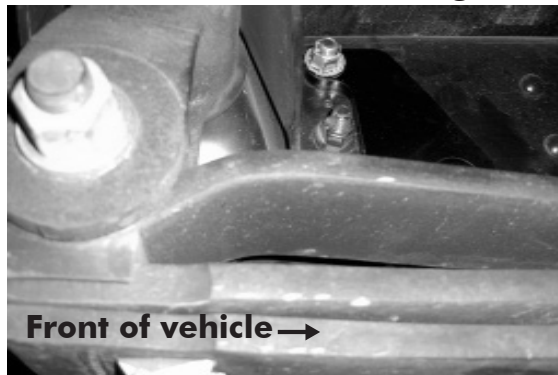


Figure 6



# INSTALLATION

### 3. Install the Anti-Sway bar.

Start by bolting the B632 bolt to the endlink and frame bracket using the  $\frac{1}{2}$  x 2.5" bolt, with the bolt head facing towards the outside. Use the supplied  $\frac{9}{16}$ " cut washer on the inside. Grease the bushings with the supplied lube and install on the anti-sway bar. Place B141 bushing clamps over bushings (Figure 8, 10).

Next, bolt the anti-sway bar to the end links. The bolt head should be to the inside (Figure 9).

Now, rotate the anti-sway bar into position on the axle plates and secure loosely with the  $\frac{1}{2}$ " x  $1\frac{3}{4}$ " bolts.

Once everything is in place, tighten all hardware.

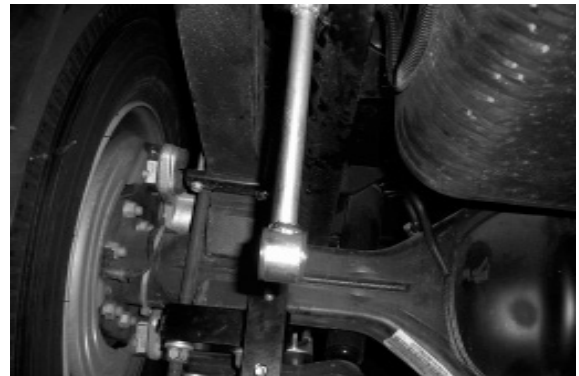
### 4. Test drive.

Test drive and listen for any unusual noise, re-check all fasteners.

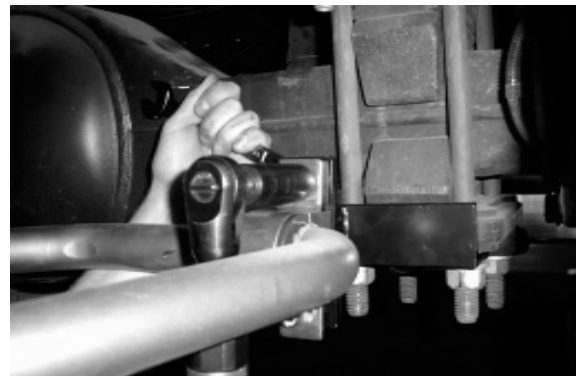
**Figure 7**



**Figure 8**



**Figure 9**



**Figure 10**



## **WARNING**

### **The anti-sway bar is not a load-bearing component**

Do not tow or hoist the vehicle using the anti-sway bar or its mounting brackets as attachment points. The anti-sway bar is not designed to carry the weight of the vehicle and may collapse, which will damage the anti-sway bar components, the suspension, or other components. The vehicle will detach or fall, which may cause severe personal injury.

Failure to follow these instructions may result in property damage, personal injury or even death.