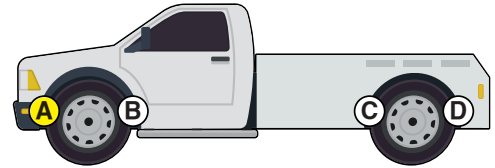




# Installation Instructions



## Factory Replacement Front Anti-Sway Bar for 2007- 2016 Chevy Silverado and GMC Sierra 2500 & 3500

part #1109-179 **Thank you for purchasing this anti-sway bar kit. Please read 1-1/2" diameter through these instructions before installation.**



## INTRODUCTION

Thank you for purchasing this anti-sway bar kit. This kit is designed to improve the handling characteristics of your vehicle by reducing the body roll and balancing the weight transfer during cornering. The anti-sway bar kit is engineered for long life and trouble-free performance. For maximum suspension control, use this kit along with our shock absorbers.

All the hardware needed for installation is included in this kit. Refer to the PARTS LIST in these instructions to identify the parts.

## SUGGESTED TOOLS

The following tools are suggested to complete the installation procedures:

- General hand tools

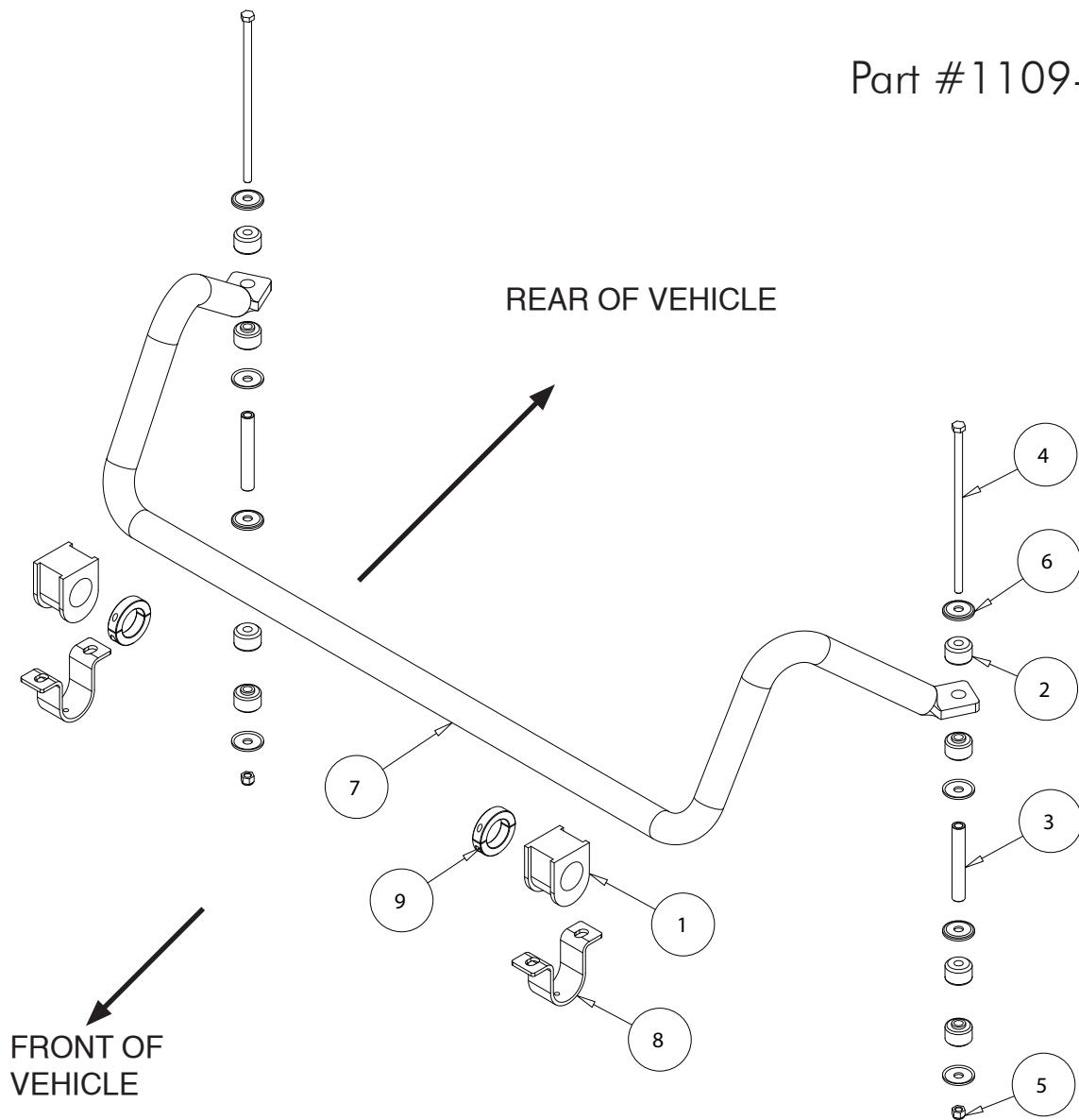
### **WARNING**

**Failure to follow these instructions can result in property damage, personal injury or even death.**

- If raising the vehicle to install the anti-sway bar, always support the vehicle with jack stands at both frame rails or at the rear axle before working underneath. Ensure that the jack stands are securely positioned, and are rated at or above the weight of the vehicle.
- The installer must read the instructions and use all bolts and parts supplied. Use only the parts supplied by ROADMASTER to install this kit.
- Minor modifications are sometimes necessary due to slight vehicle variations, even for the same year, make and model.
- Regardless of year, make and model, a wide range of options for specific applications may or may not interfere with the installation. It is the installer's responsibility to make certain that equipment is not damaged once the suspension solution travels through the full range of motion. Failure to ensure adequate clearance could result in non-warranty property damage, personal injury or even death.
- If running changes were made by the manufacturer after this kit was designed, there may be weldments, braces, gussets, or other structural items which interfere with the installation. It is the installer's responsibility to allow for these running changes without sacrificing the structural integrity of the anti-sway bar. Failure to securely fasten the anti-sway bar could result in property damage, personal injury or even death.
- ROADMASTER will not be responsible for any damage or injury resulting from any modification or alteration.
- Check ALL the fasteners for tightness before and after road testing the vehicle.
- Do not use this document for custom fabrication, as it may not show all parts or structural components.
- Do not use an air impact wrench when re-installing bolts, as stripped threads may result.
- This anti-sway bar is only warranted for the original installation. Installing a used anti-sway bar on another vehicle is not recommended and will void the warranty.

# PARTS LIST

Part #1109-179



ITEM.....	QTY.....	DESCRIPTION.....	PART.....
1.....	2.....	BUSHING.....	205217-10
2.....	8.....	BUSHING.....	205381-00
3.....	2.....	SLEEVE.....	205520-00
4.....	2.....	3/8-16 x 9 1/2" BOLT.....	350069-00
5.....	2.....	3/8-16 NYLON INSERT LOCK NUT.....	350255-00
9.....	2.....	SPLIT COLLAR.....	350530-10
6.....	8.....	CUP WASHER.....	357434-00
7.....	1.....	ANTI-SWAY BAR.....	580428-00
8.....	2.....	BUSHING CLAMP.....	B140
10.....	1.....	AQUALUBE.....	400011-30
11.....	1.....	THREADLOCKER.....	200544-00

# INSTALLATION

The following instructions must be followed in the order listed to ensure a proper installation and to preserve the ROADMASTER warranty.

1. Unload the suspension.

Before beginning this installation, unload the suspension to allow safe access to the underside of the vehicle. You can use a hoist or jack stands to accomplish this.

## ! WARNING

If raising the vehicle to install the anti-sway bar, always support the vehicle with jack stands at both frame rails or at the rear axle before working underneath. Ensure that the jack stands are securely positioned, and are rated at or above the weight of the vehicle.

2. Remove factory front anti-sway bar.

Remove the factory anti-sway bar and its endlinks. Retain the hardware for replacement in the next two steps.

3. Install the endlinks.

Assemble each of the supplied endlinks using four cup washers. Attach each endlink to the frame using the factory endlink hardware and one of the supplied 3/8" lock nuts (Fig.1).

4. Attach the replacement anti-sway bar to the endlinks.

On each side, use the remaining 3/8" lock nut and the factory endlink hardware to attach the anti-sway bar to the endlink. Leave the nuts loose for now.

5. Install the bushings and clamps on the anti-sway bar.

Grease the supplied urethane bushings and attach the replacement bar to the chassis using the factory bolts and clamps you retained from an earlier step (Fig.2).

6. Tighten, test drive and re-adjust as necessary.

Make certain all connections are tightened and that all bolts have Loctite Red® on them. Figure 3 shows the completed installation.

Figure 1



Figure 2



Figure 3

