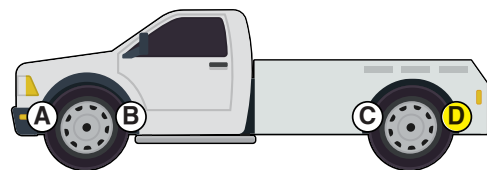




Installation Instructions

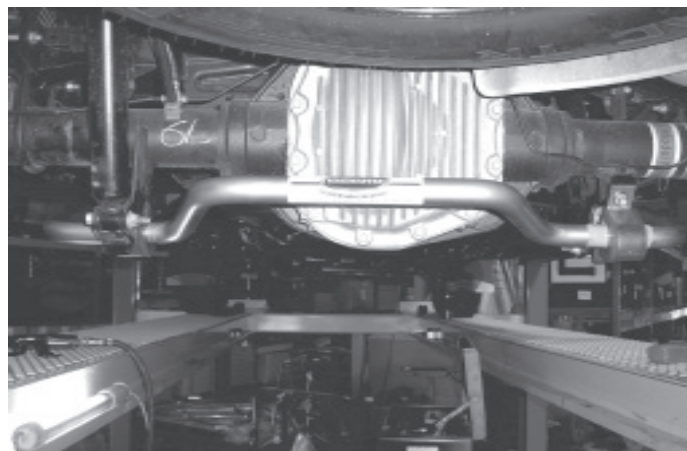


Rear Anti-Sway Bar Kit for Ford F-250/F-350

part #1139-173
1 3/8" diameter

Thank you for purchasing the anti-sway bar kit. Please read through these instructions before installation.

Note: For vehicles without a factory sway bar, you will need to order endlink kit #590170-00.



INTRODUCTION

Thank you for purchasing this rear anti-sway bar kit. This kit is designed to improve the handling characteristics of your vehicle by reducing the body roll and balancing the weight transfer during cornering. The anti-sway bar kit is engineered for long life and trouble-free performance.

All the hardware needed for installation is included in this kit. Refer to the PARTS LIST in these instructions to identify the parts.

SUGGESTED TOOLS

The following tools are suggested to complete the installation procedures:

- General Hand Tools

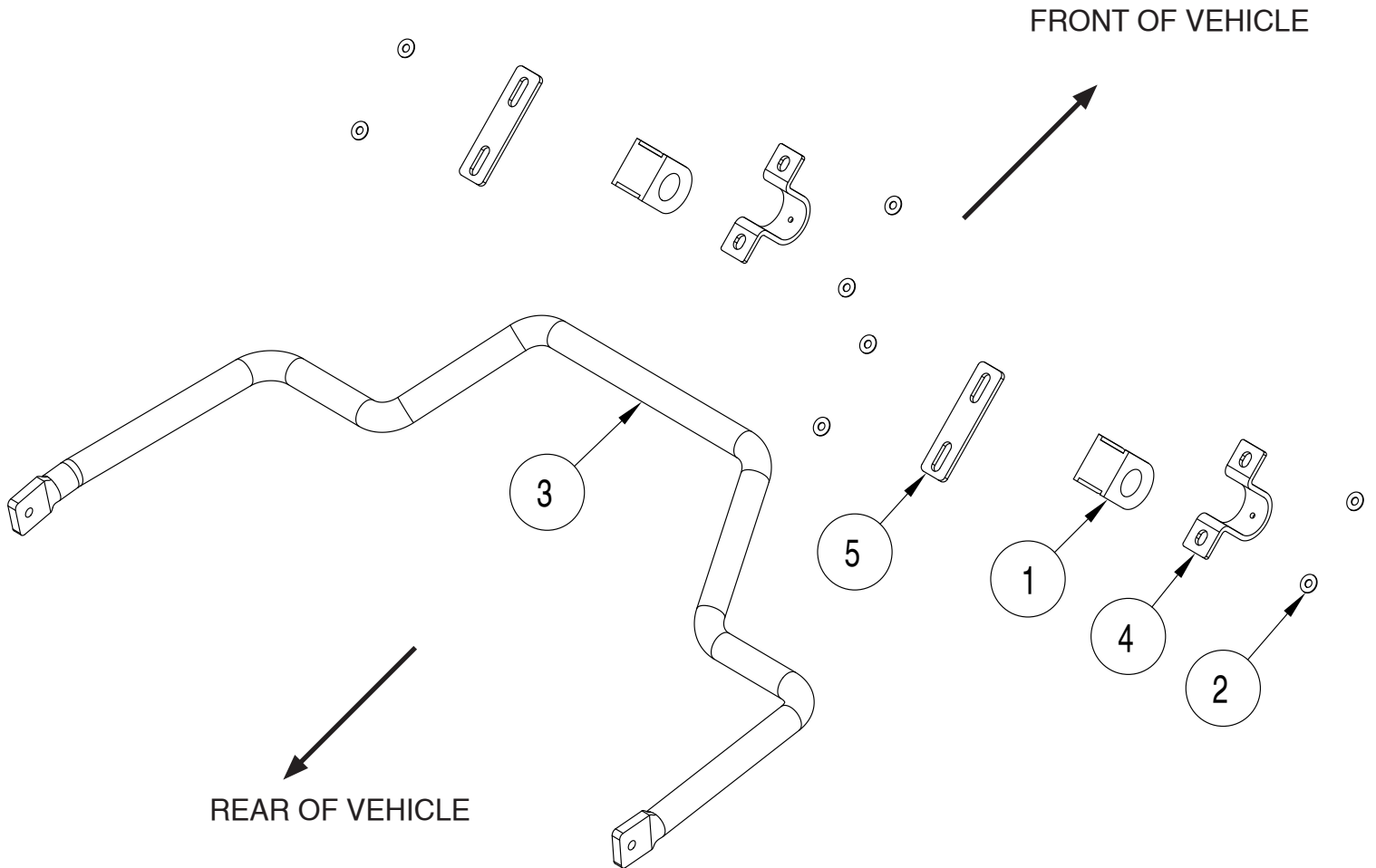
WARNING

Failure to follow these instructions can result in property damage, personal injury or even death.

- If raising the vehicle to install the anti-sway bar, always support the vehicle with jack stands at both frame rails or at the rear axle before working underneath. Ensure that the jack stands are securely positioned, and are rated at or above the weight of the vehicle.
- The installer must read the instructions and use all bolts and parts supplied. Use only the parts supplied by ROADMASTER to install this kit.
- Minor modifications are sometimes necessary due to slight vehicle variations, even for the same year, make and model.
- Regardless of year, make and model, a wide range of options for specific applications may or may not interfere with the installation. It is the installer's responsibility to make certain that equipment is not damaged once the suspension solution travels through the full range of motion. Failure to ensure adequate clearance could result in non-warranty property damage, personal injury or even death.
- If running changes were made by the manufacturer after this kit was designed, there may be weldments, braces, gussets, or other structural items which interfere with the installation. It is the installer's responsibility to allow for these running changes without sacrificing the structural integrity of the anti-sway bar. Failure to securely fasten the anti-sway bar could result in property damage, personal injury or even death.
- ROADMASTER will not be responsible for any damage or injury resulting from any modification or alteration.
- Check ALL the fasteners for tightness before and after road testing the vehicle.
- Do not use this document for custom fabrication, as it may not show all parts or structural components.
- Do not use an air impact wrench when re-installing bolts, as stripped threads may result.
- This anti-sway bar is only warranted for the original installation. Installing a used anti-sway bar on another vehicle is not recommended and will void the warranty.

PARTS LIST

Part #1139-173



ITEM	QTY	DESCRIPTION	PART NUMBER
1.....	2.....	BUSHING	205219-10
2.....	8.....	3/8" HARDENED WASHER	350304-80
3.....	1.....	ANTI-SWAY BAR.....	580219-00
4.....	2.....	BUSHING CLAMP	B141
5.....	2.....	SPACER.....	B565
6.....	1.....	THREADLOCKER.....	200544-00
7.....	1.....	AQUALUBE	400011-30

INSTALLATION

The following instructions must be followed in the order listed to ensure a proper installation and to preserve the ROADMASTER warranty.

1. Remove factory anti-sway bar from axle

Note: If your vehicle does not have a factory anti-sway bar, you will need to order end link kit #590-170-00 and install the endlinks first. Then, proceed to step 2.

Disconnect the factory bar from the rear axle and let the bar hang from the endlinks (Fig. 1).

Remove the nuts from the end links and remove the bar (Fig. 2).

Retain the factory hardware, as it will be used later in the installation (Fig. 3).

⚠ WARNING

The anti-sway bar is heavy, and may cause property damage or personal injury if it falls on equipment, engine components or any part of your body. Ensure that the anti-sway bar is supported and that you are out of the way when removing the brackets.

Failure to follow these instructions may cause property damage, personal injury or even death.

2. Install the new anti-sway bar

Note: If your vehicle does not have a factory anti-sway bar, you will need to enlarge the holes in the sway bar ends to $\frac{1}{2}$ " before proceeding.

Lube the anti-sway bar bushings with the supplied grease (Fig. 4).

Hang the anti-sway bar from the factory endlinks and install the factory nuts that were removed in step 1. Hand tighten. Rotate the bar into position to locate where the bushings will ride (Fig. 5 — next page).

Continued on next page

Figure 1



Figure 2



Figure 3

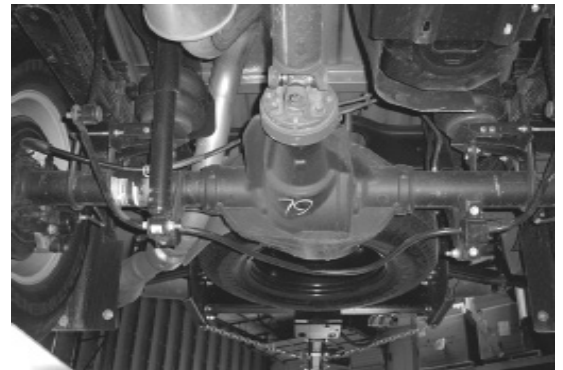
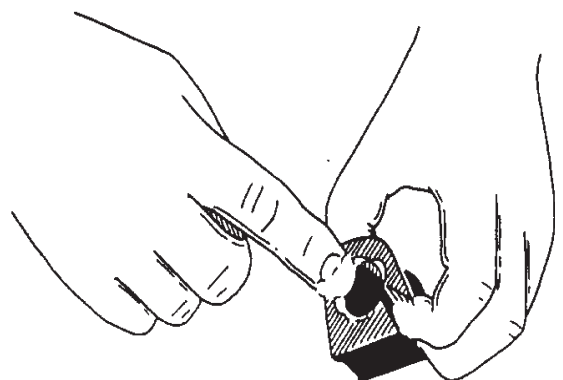


Figure 4



INSTALLATION

The following instructions must be followed in the order listed to ensure a proper installation and to preserve the ROADMASTER warranty.

Continued from previous page

3. Install the new bushings.

Install the bushings on the bar (Fig.6) and install the B141 bracket over the bushings (Fig.7).

Place B565 backing plate on the opposite side of the bushing clamp (Fig. 8). Insert the factory bolt to hold the clamp together (Fig.9).

4. Tightening the bolts

Start the bolts by hand and once all bolts are in, add Loctite and tighten them all, including the endlink nuts.

Figure 5

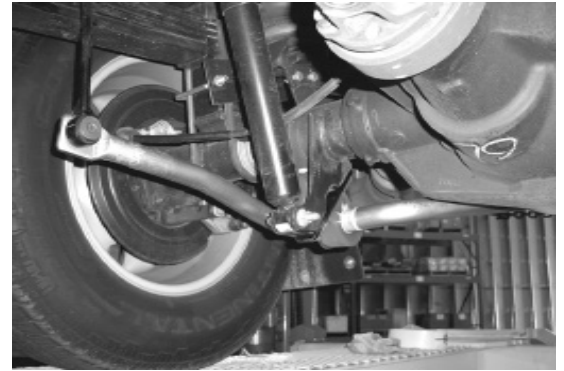


Figure 6



Figure 7



Figure 8

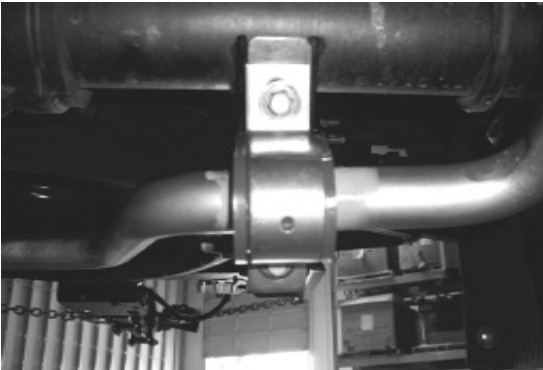
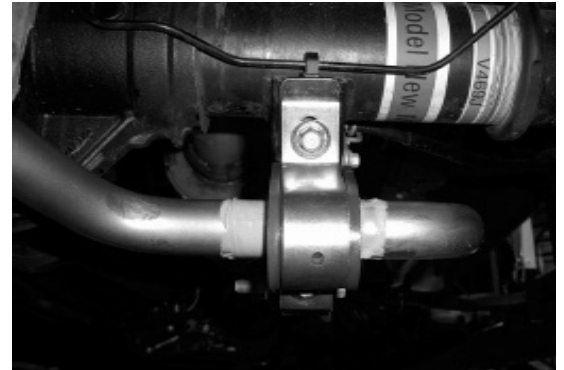


Figure 9



WARNING

The anti-sway bar is not a load-bearing component

Do not tow or hoist the vehicle using the anti-sway bar or its mounting brackets as attachment points. The anti-sway bar is not designed to carry the weight of the vehicle and may collapse, which will damage the anti-sway bar components, the suspension, or other components. The vehicle will detach or fall, which may cause severe personal injury.

Failure to follow these instructions may result in property damage, personal injury or even death.