



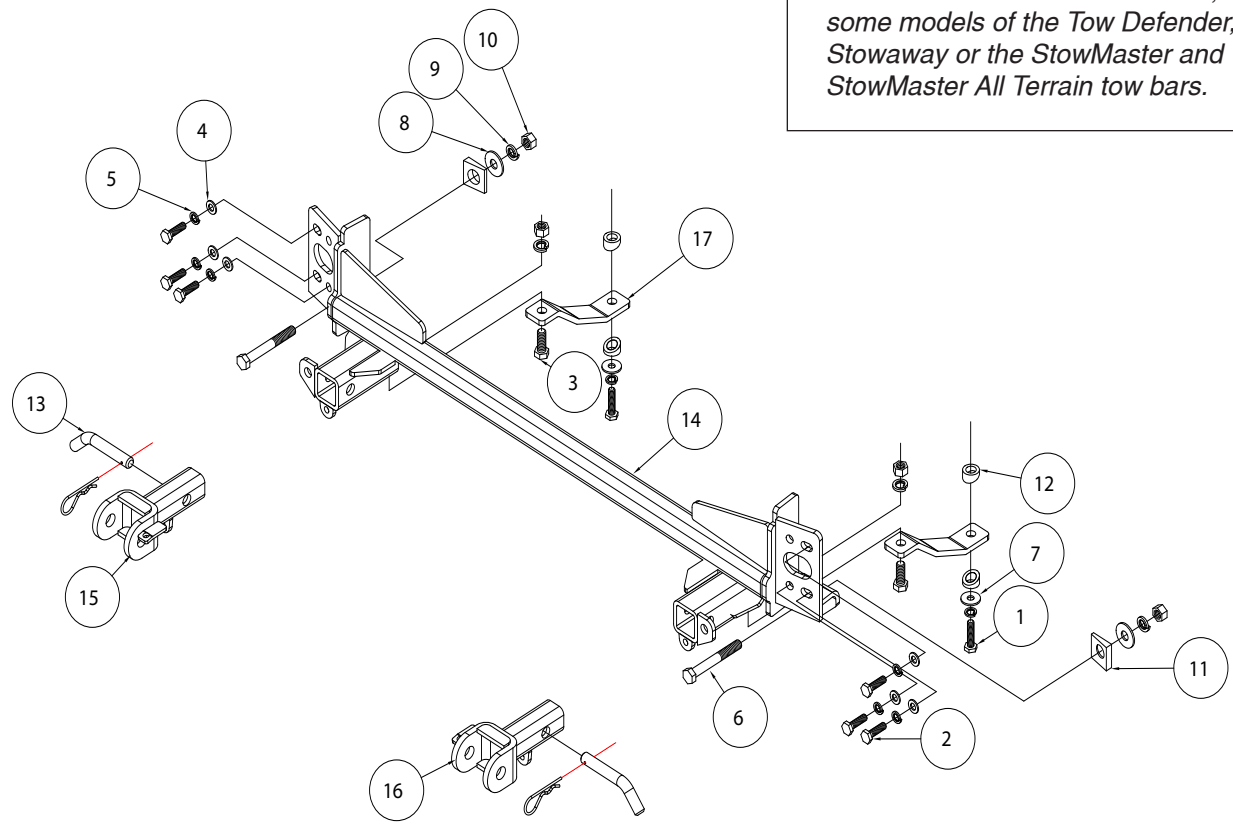
BASEPLATE KIT INSTALLATION INSTRUCTIONS

KIT# 1191-3

07/30/13
KS

ROADMASTER, Inc. 6110 NE 127th Ave. Vancouver, WA 98682 360-896-0407 fax 360-735-9300 www.roadmasterinc.com

Important
Note: this bracket will not accommodate the Guardian rock shield, some models of the Tow Defender, Stowaway or the StowMaster and StowMaster All Terrain tow bars.



ITEM	QTY	NAME	MATERIAL
1.....2.....		10mm x 1.25 x 40mm BOLT.....	356203-10
2.....6.....		10mm x 1.25 x 35mm BOLT.....	356202-00
3.....2.....		1/2" x 1 1/4" BOLT.....	350094-00
4.....6.....		10mm FLAT WASHER.....	355710-00
5.....8.....		10mm LOCK WASHER.....	355715-00
6.....2.....		1/2" x 4" BOLT.....	350105-00
7.....2.....		10mm FENDER WASHER.....	355716-00
8.....2.....		1/2" FLAT WASHER.....	350308-20
9.....4.....		1/2" LOCK WASHER.....	350309-00
10.....4.....		1/2" NUT.....	350258-00
11.....2.....		3/4" BEVELED WASHER.....	350349-00
12.....4.....		1" O.D. x 0.188 WALL BEVELED SPACER x 1/2".....	A-003600
13.....2.....		5/8" DRAW PIN W/ CLIP.....	357035-00
14.....1.....		MAIN RECEIVER.....	C-002188
15.....1.....		PASSENGER SIDE ARM.....	C-001652
16.....1.....		DRIVER SIDE ARM.....	C-001651
17.....2.....		LOWER BRACE.....	B-001731



BASEPLATE KIT INSTALLATION INSTRUCTIONS

KIT# 1191-3

07/30/13
KS

ROADMASTER, Inc. 6110 NE 127th Ave. Vancouver, WA 98682 360-896-0407 fax 360-735-9300 www.roadmasterinc.com

This is one of our MX series brackets, which allows the visible front portion of the bracket to be easily removed from the front of the vehicle (Fig.A and Fig.B). The bracket consists of a main receiver brace, two removable front braces, two center braces and a hardware pack.

The main receiver brace mounts to the frame rails and the bumper core. The removable front braces install in the main receiver brace.

Before starting the installation, lay out the kit components in order, as they will be used. This will give you a visual idea of how the components work, and will also confirm that everything is present and accounted for.



IMPORTANT: All baseplates **must** be assembled with all the bolts left loose for final adjustment and positioning (before tightening) unless otherwise instructed. All bolts **must** be torqued for proper strength. If more than one bolt is used per fastening point, the diagram may only show one. Use flat washers over all slotted holes and lock washers on all fasteners.

WARNING

Failure to heed these warnings or follow the installation instructions may result in a voided warranty, loss of towed vehicle, personal injury or death.

- Do not weld or modify this baseplate or its components. Welding or modification will void the warranty.
- Do not use this document as a basis to design/fabricate a baseplate, as it may not show all parts or structural components.
- We strongly recommend professional installation.
- If the towed vehicle has been in an accident, it must be properly repaired before attaching the baseplate. Do not install the baseplate if any structural frame damage is found.
- The installer must use all bolts and parts supplied. If running changes were made by the vehicle manufacturer after this kit was designed, some bolts or other fasteners may no longer be the correct size. It is the installer's responsibility to verify this kit is securely fastened to the vehicle.
- Use Loctite® Red on all bolts used to secure this baseplate. Torque all bolts to the specifications found at the end of these instructions. Do not over-torque the bolts or failure may occur.
- The installer must inspect the baseplate to ensure adequate clearance, particularly around hoses, air conditioner lines, radiators, etc. or non-warranty failure may result.
- Roadmaster manufactures many styles of baseplates. If your baseplate has removable arms, they must be removed before driving the vehicle, unless the arms can be pinned or padlocked in place. If not secured, the arms could vibrate out.
- Some motorhome chassis have such a tight turning radius that you can damage your motorhome, towed vehicle, tow bar or baseplate while turning sharply. Before getting on the road, test your turning radius in an empty parking lot. Turning too sharply could result in non-warranty damage to your towing system, motorhome and/or towed vehicle.
- Do not back up with the towed vehicle attached or non-warranty damage will occur to your towing system or vehicles.
- The safety cables must connect the towing vehicle to the towed vehicle frame to frame, with the cables crossed, with enough slack for sharp turns. See cable instructions for proper routing. Failure to do so will result in non-warranty damage and/or the loss of the towed vehicle.
- This kit is designed for use with ROADMASTER tow bars and ROADMASTER adapters only. Using this kit with other brands, without an approved ROADMASTER adapter, may result in non-warranty damage or injury.
- Receiver extensions and out-of-level towing situations of 3 inches or more. This can cause the system to swing much higher and lower, causing excessive strain on the tow bar, baseplate and frame. That can cause the towing system to fail, causing property damage, personal injury or even death. If you must use a receiver extension or drop hitch to tow, it will reduce your receiver's weight capacity by 1/3 to avoid damaging your system. Never use more than one extension and/or drop hitch, as this will void your warranty.
- Every 3,000 miles, the owner must inspect all mounting points for cracks or fatigue, and check the fasteners for proper torque, according to the bolt torque requirements chart on the last page of these instructions.
- The owner must follow the vehicle manufacturer's instructions to prepare the vehicle for towing. Failure to do so may cause severe damage to the vehicle.
- This baseplate is only warranted for the original installation. Installing a used baseplate on another vehicle is not recommended and will void the warranty.



BASEPLATE KIT INSTALLATION INSTRUCTIONS

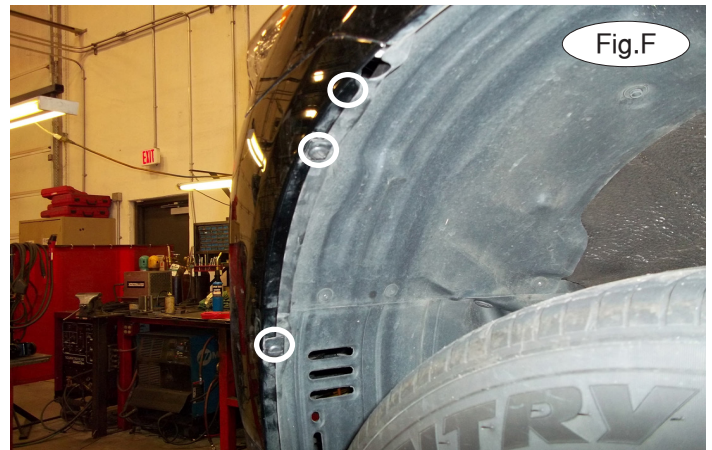
KIT# 1191-3

07/30/13
KS

ROADMASTER, Inc. 6110 NE 127th Ave. Vancouver, WA 98682 360-896-0407 fax 360-735-9300 www.roadmasterinc.com



1. **Important:** please use all supplied bolts and parts and read all instructions carefully before beginning this installation. The majority of questions you may have can be answered within the text, and proper installation will ensure safe and secure travel. Now, begin the installation. Remove 11 plastic fasteners attaching the radiator cover to the fascia and core support (Fig.C).



2. Remove six plastic fasteners attaching the fascia to the core support (Fig.D).
3. Remove three plastic fasteners attaching the lower part of the grille to the core support. *Note:* the fasteners are located behind the grille, one on each side directly behind the headlight (Fig.E), and there is one in the middle.
4. On each side, remove two plastic fasteners attaching the fender liner to the fascia and one 10mm (head) bolt attaching the fascia to the corner of the fender (Fig.F).
5. Remove 14 10mm (head) bolts and 10 plastic fasteners attaching the center splash shield to the core support and bottom of the fascia (Fig.G – driver's side).





BASEPLATE KIT INSTALLATION INSTRUCTIONS

KIT# 1191-3

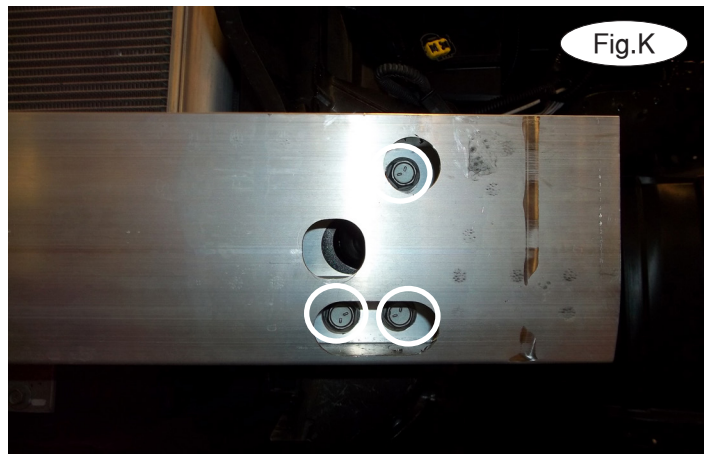
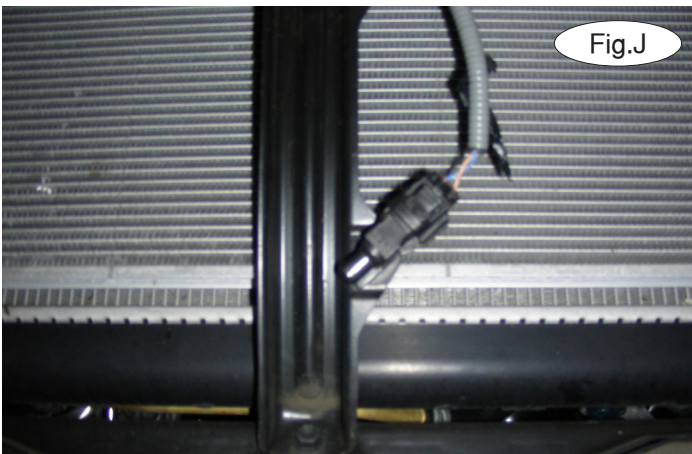
07/30/13
KS

ROADMASTER, Inc. 6110 NE 127th Ave. Vancouver, WA 98682 360-896-0407 fax 360-735-9300 www.roadmasterinc.com



6. Pull out and forward on the corners to remove the fascia (Fig.H).

7. Remove the foam shock absorption pad from the bumper core (Fig.I). Disconnect the ambient temperature sensor from the core support bracket (Fig.J) and remove the bumper core by removing three 14mm (head) bolts attaching the bumper core to the frame rail on each side (Fig.K – driver's side). *Note:* the bumper core and shock absorption pad will not be replaced. Retain the bumper core and shock absorption pad as well as the attachment hardware so that they can be replaced if the bracket is ever removed.



8. Trim the air deflector on each side using the yellow lines in Figure L as a guide for trimming.



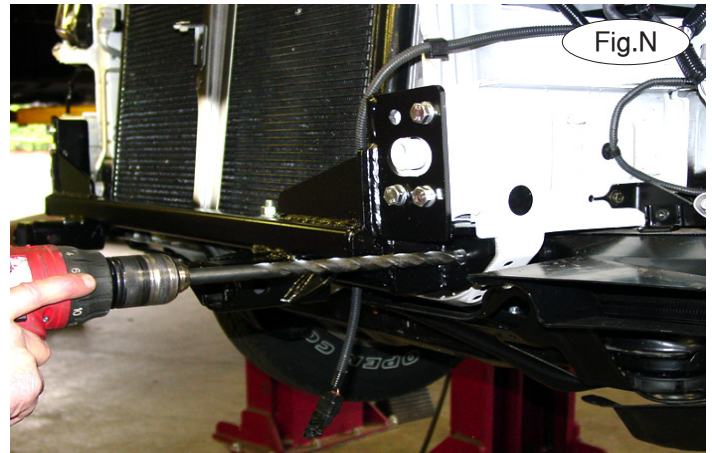
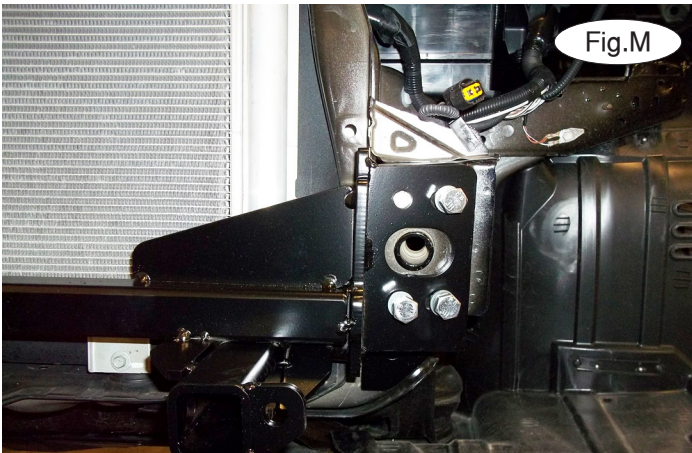


BASEPLATE KIT INSTALLATION INSTRUCTIONS

KIT# 1191-3

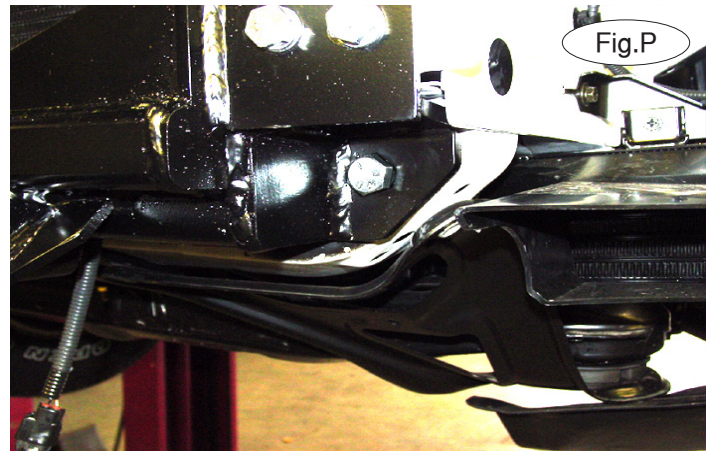
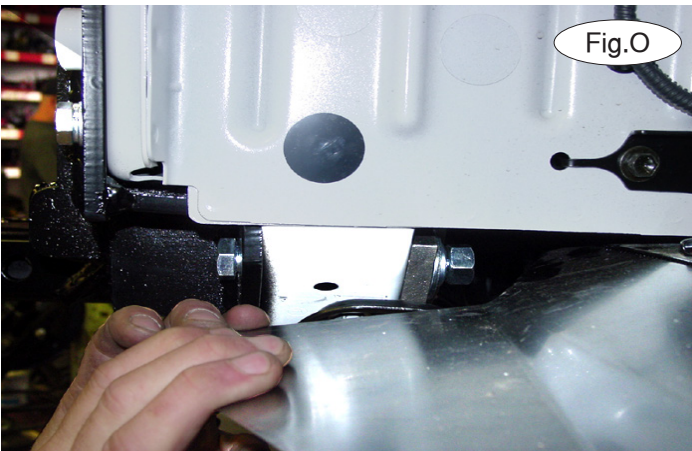
07/30/13
KS

ROADMASTER, Inc. 6110 NE 127th Ave. Vancouver, WA 98682 360-896-0407 fax 360-735-9300 www.roadmasterinc.com



9. Place the main receiver brace over the ends of the frame rails. On each side, using the supplied 10mm x 1.5 x 35mm bolts, 10mm flat washers and lock washers, bolt the main receiver brace to the ends of the bumper core (Fig.M). Torque the bolts to the bolt torque requirements found at the end of these instructions.

10. On both sides, using the existing holes in the main receiver brace as a template, drill a 1/2" hole through the back of the core support (Fig.N).



11. On both sides, bolt through the main receiver brace and the core support using a 1/2" x 4" bolt, 3/4" beveled washer, flat washer, lock washer and nut (Fig.O- side view, Fig.P- front view).

12. Working on the driver's side only, remove one 14mm (head) bolt attaching the core support brace to the core support (Fig.Q).





BASEPLATE KIT INSTALLATION INSTRUCTIONS

KIT# 1191-3

07/30/13
KS

ROADMASTER, Inc. 6110 NE 127th Ave. Vancouver, WA 98682 360-896-0407 fax 360-735-9300 www.roadmasterinc.com



13. Using the supplied 1/2" x 1 1/4" bolt, 1/2" lock washer and nut, bolt the lower brace to the main receiver brace (Fig.R).
14. Place a 10mm lock washer and fender washer over one of the supplied 10mm x 1.25 x 40mm bolt. Now, place one of the 1" beveled spacers over the bolt and bolt up through the lower brace. Now, place the second beveled spacer between the lower brace and the core support brace and rotate the spacers to align with the weld nut in the frame (Fig.R).
15. Repeat steps 12 through 14 for the passenger side of the vehicle. Torque all bolts to the bolt torque requirements found at the end of these instructions.
16. Using the two supplied zip ties, remount the ambient temperature sensor to the main receiver brace.
17. On each side, use the yellow lines in Figure S to trim the fascia.
18. Fit the front bracket arms into the front receiver braces, and secure them in place with the supplied 5/8" draw pins and spring pins.
19. Attach the 8" safety cables with the cable connectors (Q-Links) to the front of the receiver braces.
20. Install the tow bar to the mounting bracket according to the manufacturer's instructions. Connect the safety cables to the safety cable tabs illustrated on the first page of these instructions.

BOLT TORQUE REQUIREMENTS

Note: The torque values represented below are intended as general guidelines. Torque requirements for specific applications may vary. Roadmaster does not warrant this information to be accurate for all applications and disclaims all liability for any claims or damages which may result from its use.

STANDARD BOLTS

Thread Size	Grade	Torque
5/16	5	13 ft./lb.
3/8	5	23 ft./lb.
7/16	5	37 ft./lb.
1/2	5	56 ft./lb.
5/8	5	150 ft./lb.

METRIC BOLTS

Thread Size	Grade	Plated / Unplated
8mm-1.0	8.8	20 ft./lb. 18 ft./lb.
8mm-1.25	8.8	19 ft./lb. 18 ft./lb.
10mm-1.25	8.8	38 ft./lb. 36 ft./lb.
10mm-1.5	8.8	37 ft./lb. 35 ft./lb.

METRIC BOLTS

Thread Size	Grade	Plated / Unplated
12mm-1.25	8.8	70 ft./lb. 65 ft./lb.
12mm-1.5	8.8	66 ft./lb. 61 ft./lb.
12mm-1.75	8.8	65 ft./lb. 60 ft./lb.
14mm-2.0	8.8	104 ft./lb. 97 ft./lb.

All illustrations and specifications contained herein are based on the latest information available at the time of publication approval. ROADMASTER, INC. reserves the right to make changes at any time without notice in material, specification and models or to discontinue models.