



Installation Instructions

Thank you for purchasing this anti-sway bar kit. Please read through these instructions before installation.

Factory Replacement Front Anti-Sway Bar for Freightliner XC and XCM Chassis V-Ride

part #1209-139
2" diameter



INTRODUCTION

Thank you for purchasing this anti-sway bar kit. This kit is designed to improve the handling characteristics of your vehicle by reducing the body roll and balancing the weight transfer during cornering. The anti-sway bar kit is engineered for long life and trouble-free performance.

All the hardware needed for installation is included in this kit. Refer to the PARTS LIST in these instructions to identify the parts.

SUGGESTED TOOLS

The following tools are suggested to complete the installation procedures:

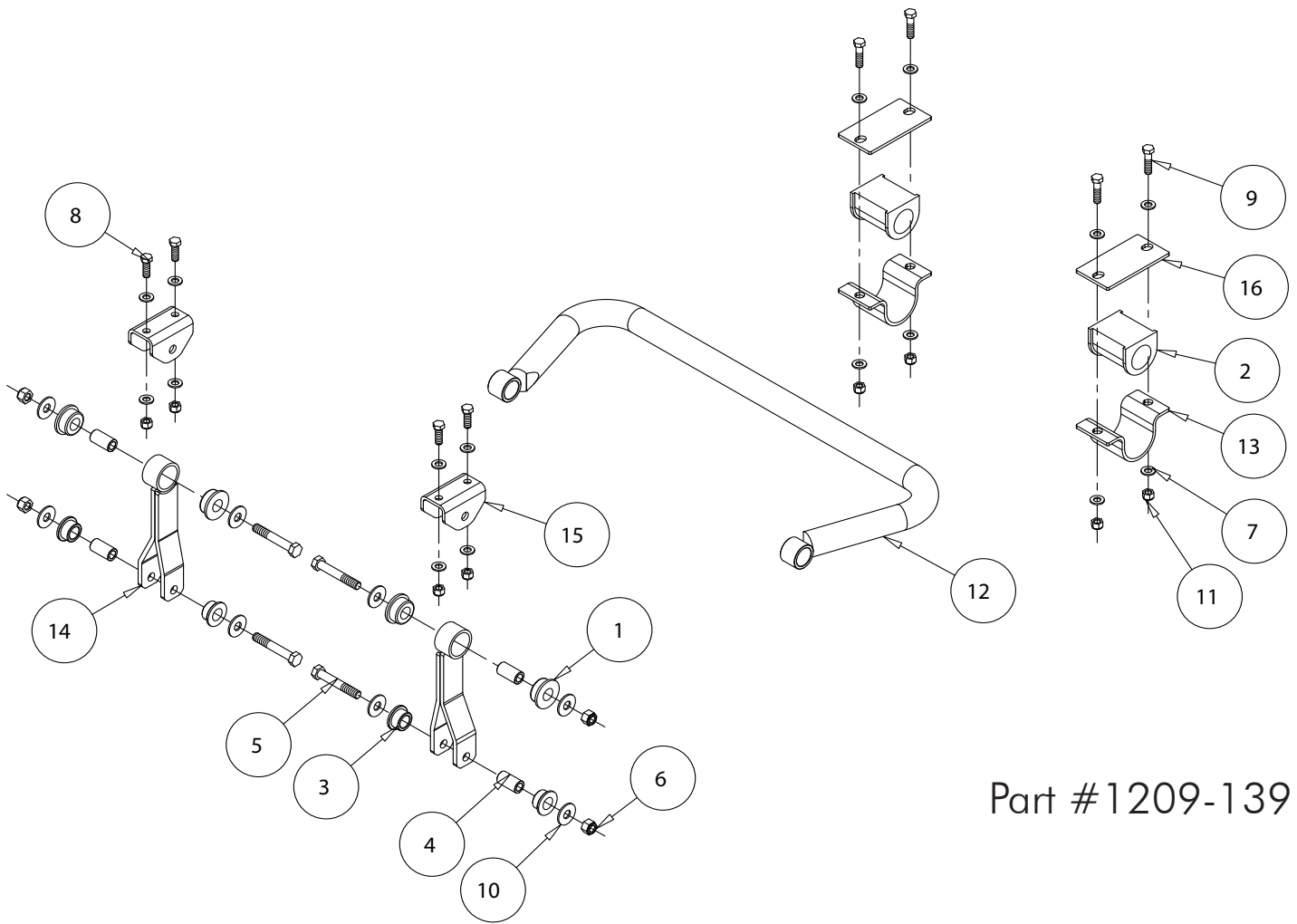
- General hand tools

WARNING

Failure to follow these instructions can result in property damage, personal injury or even death.

- If raising the vehicle to install the anti-sway bar, always support the vehicle with jack stands at both frame rails or at the rear axle before working underneath. Ensure that the jack stands are securely positioned, and are rated at or above the weight of the vehicle.
- The installer must read the instructions and use all bolts and parts supplied. Use only the parts supplied by ROADMASTER to install this kit.
- Minor modifications are sometimes necessary due to slight vehicle variations, even for the same year, make and model.
- Regardless of year, make and model, a wide range of options for specific applications may or may not interfere with the installation. It is the installer's responsibility to make certain that equipment is not damaged once the suspension solution travels through the full range of motion. Failure to ensure adequate clearance could result in non-warranty property damage, personal injury or even death.
- If running changes were made by the manufacturer after this kit was designed, there may be weldments, braces, gussets, or other structural items which interfere with the installation. It is the installer's responsibility to allow for these running changes without sacrificing the structural integrity of the anti-sway bar. Failure to securely fasten the anti-sway bar could result in property damage, personal injury or even death.
- ROADMASTER will not be responsible for any damage or injury resulting from any modification or alteration.
- Check ALL the fasteners for tightness before and after road testing the vehicle.
- Do not use this document for custom fabrication, as it may not show all parts or structural components.
- Do not use an air impact wrench when re-installing bolts, as stripped threads may result.
- This anti-sway bar is only warranted for the original installation. Installing a used anti-sway bar on another vehicle is not recommended and will void the warranty.

PARTS LIST



Part #1209-139

ITEM	QTY	NAME	MATERIAL
1.....	4	BUSHING.....	205202-10
2.....	2	BUSHING.....	205207-10
3.....	4	BUSHING.....	205209-00
4.....	4	BUSHING SLEEVE.....	205503-00
5.....	4	5/8-11 x 4" GRADE 8 BOLT	350158-50
6.....	4	5/8-11 GRADE 8 NYLON INSERT LOCK NUT.....	350263-20
7.....	16	1/2" HARDENED SAE FLAT WASHER	350308-80
8.....	4	1/2-13 x 1 1/2" GRADE 8 BOLT.....	350701-00
9.....	4	1/2-13 x 2" GRADE 8 BOLT	350703-00
10.....	8	5/8" FLAT WASHER.....	350731-00
11.....	8	1/2-13 GRADE 8 NYLON LOCK NUT	350735-00
12.....	1	ANTI-SWAY BAR	580515-00
13.....	2	BUSHING CLAMP	B913
14.....	2	END LINK.....	B969
15.....	2	FRAME BRACKET.....	B970
16.....	2	PLATE	B1001
17.....	1	AQUALUBE.....	4000011-30
18.....	1	LOCTITE	200544-00

INSTALLATION

The following instructions must be followed in the order listed to ensure a proper installation and to preserve the ROADMASTER warranty.

1. Unload the suspension.

Before beginning this installation, unload the suspension to allow safe access to the underside of the vehicle. You can use a hoist or jack stands to accomplish this.

WARNING

If raising the vehicle to install the anti-sway bar, always support the vehicle with jack stands at both frame rails or at the rear axle before working underneath. Ensure that the jack stands are securely positioned, and are rated at or above the weight of the vehicle.

2. Remove factory front anti-sway bar.

Remove the bushing clamps, factory anti-sway bar and its endlinks, and the factory frame bracket on each side.

3. Install the frame brackets.

Place the frame bracket over the frame rail and bolt it into place using the supplied $\frac{1}{2}$ " x $1\frac{1}{2}$ " bolts and $\frac{1}{2}$ " flat washers and then finish with $\frac{1}{2}$ " flat washers and nuts (Figure 1).

4. Install the shackles.

Assemble the top section of each shackle as shown in the drawing on page 2 using two bushings and one bushing sleeve per shackle. Attach each shackle to the frame bracket by bolting through the bushing, sleeve, and shackle using $\frac{5}{8}$ " x 4" bolts and $\frac{5}{8}$ " flat washers. Finish each one with a $\frac{5}{8}$ " flat washer and nut (Figure 1).

5. Attach the anti-sway bar to the shackles.

Repeat step 4 to assemble the bottom portion of the shackle. Then, hang the anti-sway bar from each side and bolt through the bushings, sleeve, shackle and anti-sway bar using the remaining $\frac{5}{8}$ " hardware (Figure 2).

6. Install the bushings and clamps on the anti-sway bar.

Grease the supplied urethane bushings and, on each side, attach the anti-sway bar to the chassis using the supplied bushing clamp, two $\frac{1}{2}$ " x 2" bolts and two $\frac{1}{2}$ " flat washers bolted through the included support plate. Finish each bolt with another $\frac{1}{2}$ " flat washer and nut (Figure 3).

7. Tighten, test drive and re-adjust as necessary.

Torque bolts to bolt torque requirements below.

BOLT TORQUE REQUIREMENTS

STANDARD BOLTS			U-BOLTS	
Thread	Grade	Torque	Thread	Torque
3/8.....	5.....	30 lb-ft	3/8-24	35 lb-ft
7/16.....	5.....	50 lb-ft	1/2-20	70 lb-ft
1/2.....	5.....	75 lb-ft	5/8-18	140 lb-ft
5/8.....	5.....	140 lb-ft	3/4-16	250 lb-ft
			7/8-14	400 lb-ft

Note: Endlink bolts use grommets and should NOT be torqued. Tighten these bolts by hand until the grommet starts to deform. Also, these torque values are intended as general guidelines. Roadmaster does not warrant this information to be accurate for all applications and disclaims all liability for any claims or damages which may result from its use.

Figure 1



Figure 2

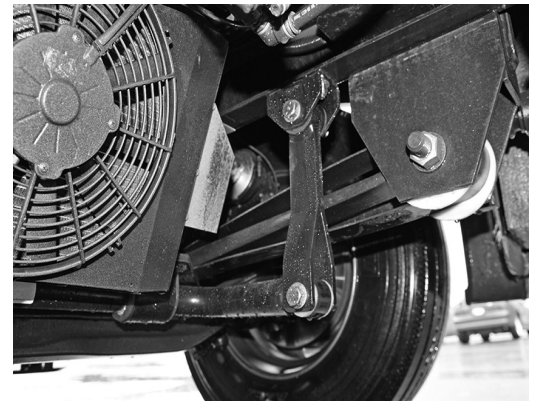


Figure 3

