



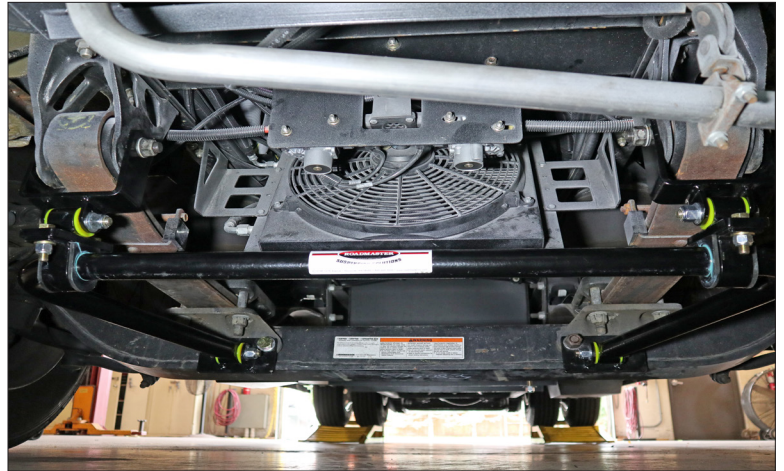
# Installation Instructions

**Thank you for purchasing this anti-sway bar kit. Please read through these instructions before installation.**

## Front Anti-Sway Bar Kit for the Tiffin Powerglide

part #1249-101  
1 $\frac{3}{4}$ " diameter

**Note: Designed for Tiffin Powerglide**



## INTRODUCTION

Thank you for purchasing this anti-sway bar kit. This kit is designed to improve the handling characteristics of your motorhome by reducing the body roll and balancing the weight transfer during cornering. The anti-sway bar kit is engineered for long life and trouble-free performance. For maximum suspension control, use this kit along with our front anti-sway bar kit.

All the hardware needed for installation is included in this kit. Refer to the PARTS LIST in these instructions to identify the parts.

## SUGGESTED TOOLS

The following tools are suggested to complete the installation procedures:

- General hand tools
- Torque wrench
- Wheel chocks
- Ramps
- 3/4" Impact wrench
- 42mm socket and large crescent wrench
- Jacks and jack stands

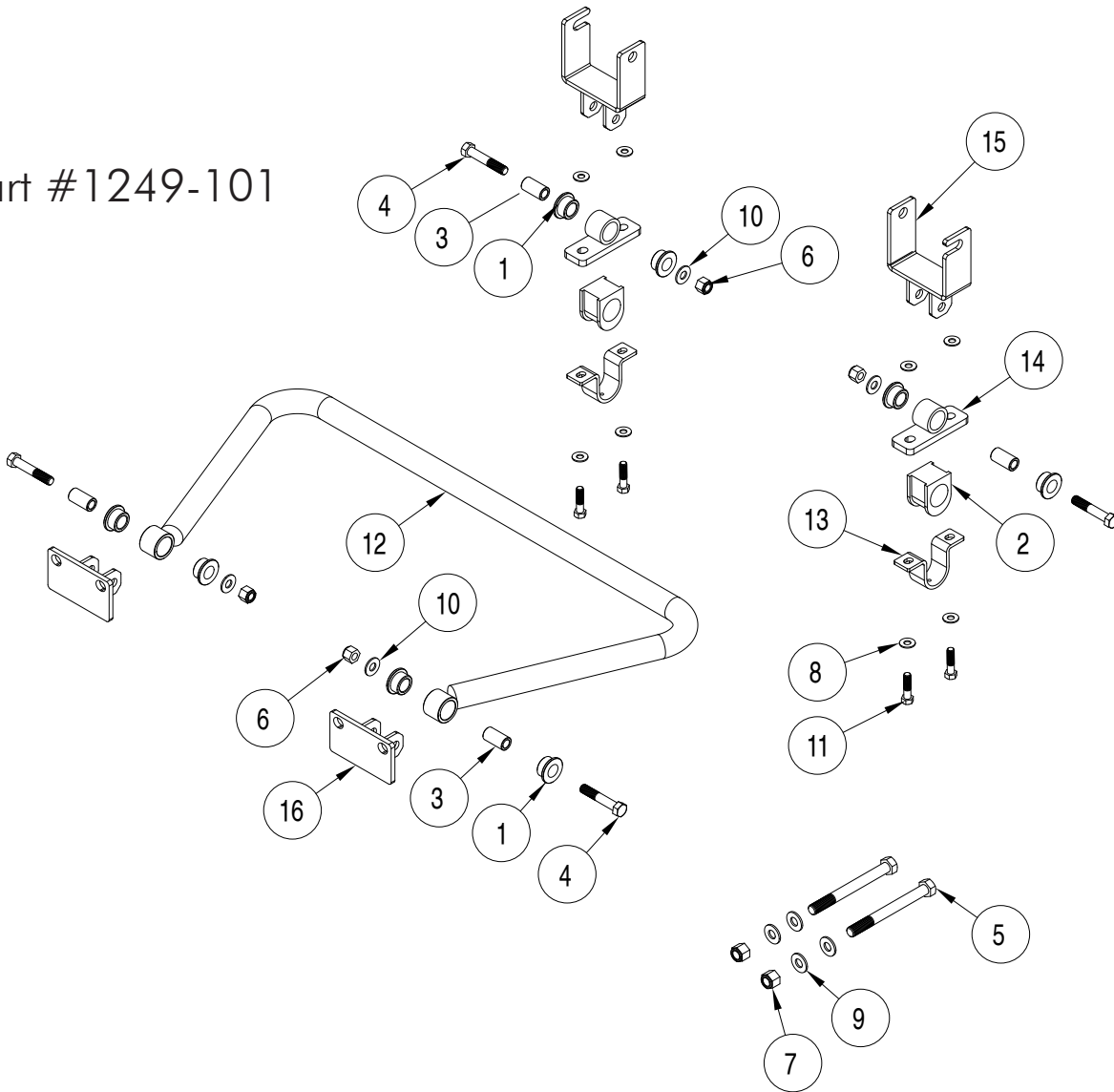
### **⚠ WARNING**

**Failure to follow these instructions can result in property damage, personal injury or even death.**

- If raising the vehicle to install the anti-sway bar, always support the vehicle with jack stands at both frame rails or at the rear axle before working underneath. Ensure that the jack stands are securely positioned, and are rated at or above the weight of the vehicle.
- The installer must read the instructions and use all bolts and parts supplied. Use only the parts supplied by ROADMASTER to install this kit.
- Minor modifications are sometimes necessary due to slight vehicle variations, even for the same year, make and model.
- Regardless of year, make and model, a wide range of options for specific applications may or may not interfere with the installation. It is the installer's responsibility to make certain that equipment is not damaged once the suspension solution travels through the full range of motion. Failure to ensure adequate clearance could result in non-warranty property damage, personal injury or even death.
- If running changes were made by the manufacturer after this kit was designed, there may be weldments, braces, gussets, or other structural items which interfere with the installation. It is the installer's responsibility to allow for these running changes without sacrificing the structural integrity of the anti-sway bar. Failure to securely fasten the anti-sway bar could result in property damage, personal injury or even death.
- ROADMASTER will not be responsible for any damage or injury resulting from any modification or alteration.
- Check ALL the fasteners for tightness before and after road testing the vehicle.
- Do not use this document for custom fabrication, as it may not show all parts or structural components.
- Do not use an air impact wrench when re-installing bolts, as stripped threads may result.
- This anti-sway bar is only warranted for the original installation. Installing a used anti-sway bar on another vehicle is not recommended and will void the warranty.

# PARTS LIST

Part #1249-101



| ITEM | QTY | DESCRIPTION                    | PART NUMBER |
|------|-----|--------------------------------|-------------|
| 1    | 8   | BUSHING                        | 205209-00   |
| 2    | 2   | BUSHING                        | 205220-20   |
| 3    | 4   | BUSHING SLEEVE                 | 205503-00   |
| 4    | 4   | 5/8-11 x 3 1/2" BOLT - GRADE 8 | 350156-00   |
| 5    | 2   | 3/4-10 x 7 1/2" BOLT - GRADE 8 | 350193-00   |
| 6    | 4   | 5/8-11 NYLON INSERT LOCK NUT   | 350263-00   |
| 7    | 2   | 3/4-10 NYLON INSERT LOCK NUT   | 350265-00   |
| 8    | 8   | 1/2" HARDENED SAE WASHER       | 350308-80   |
| 9    | 4   | 3/4" SAE WASHER                | 350314-20   |
| 10   | 4   | 5/8" SAE WASHER                | 350348-80   |
| 11   | 4   | 1/2-13 x 2" BOLT - GRADE 8     | 350703-00   |
| 12   | 1   | ANTI-SWAY BAR                  | 580606-00   |
| 13   | 2   | BUSHING CLAMP                  | B141        |
| 14   | 2   | BRACKET                        | B661        |
| 15   | 2   | FRAME BRACKET                  | B1078       |
| 16   | 2   | FRAME BRACKET                  | B1079       |
| 17   | 4   | 1/2-13 NYLON INSERT LOCK NUT   | 350259-00   |
| 18   | 1   | AQUALUBE                       | 400011-30   |

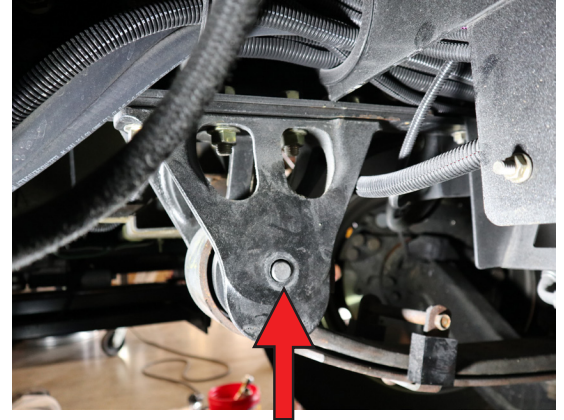
# INSTALLATION

The following instructions must be followed in the order listed to ensure a proper installation and to preserve the Roadmaster, Inc. warranty.

**1. Remove the spring hanger nut and washer.**

Remove the spring hanger nut and washer on each side. Tap the bolt through so that the bolt is flush with the spring hanger mount. Do NOT remove the bolt (Fig.1). *Note: To do this on the driver's side, you will need to turn the steering wheel to the right to turn the control arm out of the way.*

**Figure 1**



**2. Install the spring hanger bracket.**

Install the spring hanger bracket with the cutout hole on the bolt head side (Fig.2). Knock the bolt back through and secure the factory hardware with Loctite.

**Figure 2**



**3. Install the B661.**

Install the B661 to the spring hanger brackets using the factory hardware (Fig.3). Leave the hardware loose for now.

**4. Install the frame brackets.**

Place 1/2" hardened washers over the 1/2" x 2 1/2" bolts. Bolt through the frame brackets and finish with 1/2" hardened washers. Loosely reinstall the factory nuts (Fig.3). Do NOT tighten them yet. *Note: If equipped with an RBK30 and RSSA or Exact Center, you will need to use the 3/4" x 7 1/2" hardware to secure the RBK axle bracket to the frame bracket. If an RBK is not installed, reuse the factory hardware.*

**5. Install the sway bar to the frame brackets.**

Install the ring ends of the sway bay to the B1078 axle brackets using a 5/8" x 3 1/2" bolt and 5/8" locknut. Leave loose for now. Then, rotate the sway bar up to the B661 bushing brackets to determine the location for the bushings. Lubricate and install the bushings on to the sway bar at the approximate locations noted. Then, using the B141 bushing clamps and the supplied 1/2" x 2" bolts, nuts and washers, rotate the sway bar up to the B661 bushing brackets and secure the sway bar with the B141s (Fig.4) Torque to 60 lb-ft.

**Figure 4**



**6. Test drive the vehicle.**

Listen for any unusual noises. Re-inspect the installation and re-check the fasteners.

**Figure 3**



## **WARNING**

### **The anti-sway bar is not a load-bearing component**

Do not tow or hoist the vehicle using the anti-sway bar or its mounting brackets as attachment points. The anti-sway bar is not designed to carry the weight of the vehicle and may collapse, which will damage the anti-sway bar components, the suspension, or other components. The vehicle will detach or fall, which may cause severe personal injury.

Failure to follow these instructions may result in property damage, personal injury or even death.

## **WARNING**

After road testing, re-check all fasteners for proper tightness — if a fastener has worked loose or fallen off, re-tighten or replace it. Without all kit components properly tightened or in place, the anti-sway bar will not stabilize the vehicle at full capacity, which may cause reduced cornering ability or other reductions in vehicle handling or performance.

Failure to follow these instructions may result in property damage, personal injury or even death.