

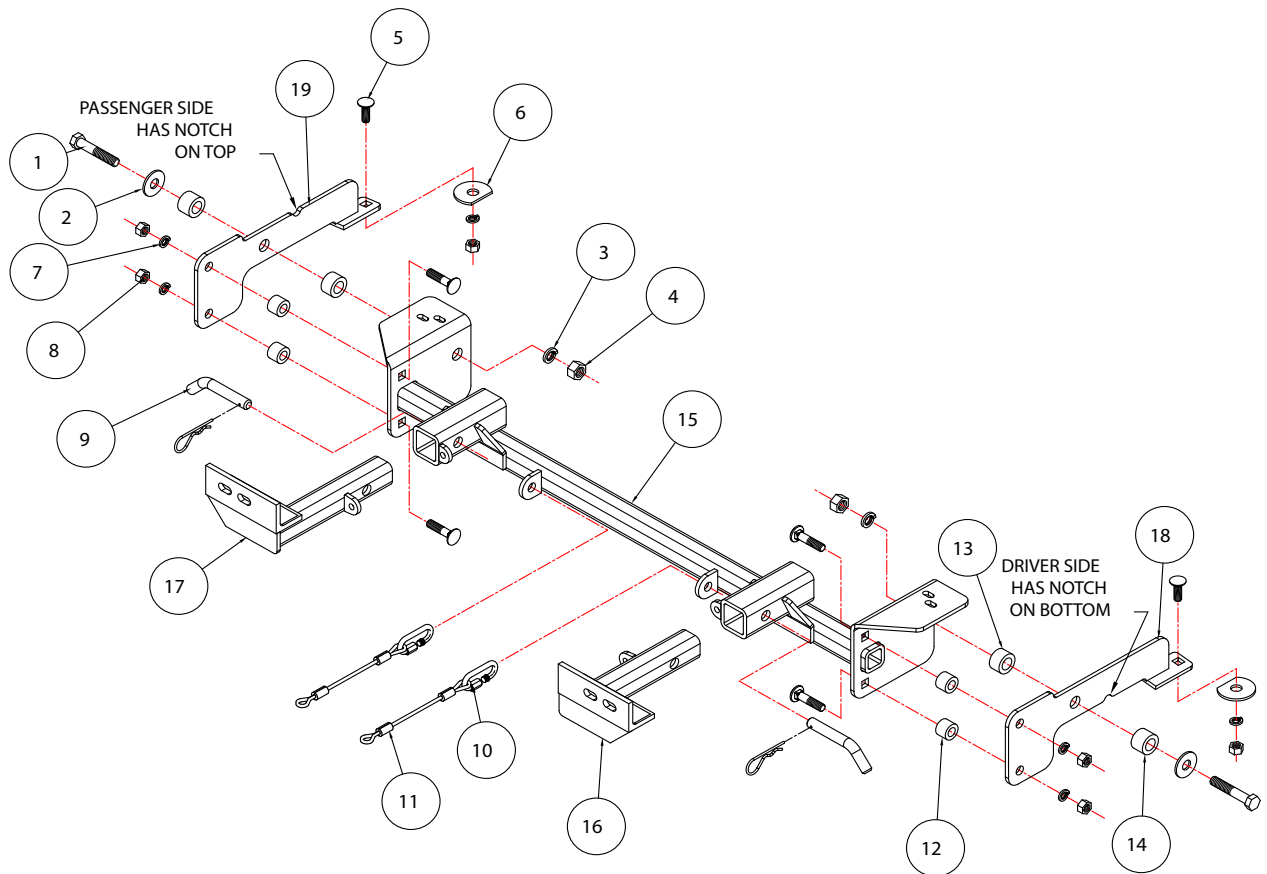


# BASEPLATE KIT INSTALLATION INSTRUCTIONS

**KIT# 1555-5**

07/21/21  
KS

ROADMASTER, Inc. 6110 NE 127th Ave. Vancouver, WA 98682 360-896-0407 fax 360-735-9300 www.roadmasterinc.com



ITEM	QTY	NAME	MATERIAL
1.....2.....	2	5/8" x 3 1/2" BOLT.....	350163-00
2.....2.....	2	5/8" FLAT WASHER.....	350312-00
3.....2.....	2	5/8" LOCK WASHER.....	350313-00
4.....2.....	2	5/8" NUT.....	350262-00
5.....6.....	6	1/2" x 2" BOLT.....	350373-00
6.....2.....	2	1/2" CLIPPED PLATE WASHER.....	A002687
7.....6.....	6	1/2" LOCK WASHER.....	350309-00
8.....6.....	6	1/2" NUT.....	350258-00
9.....2.....	2	DRAW PIN / SPRING PIN.....	357035-00
10.....2.....	2	CABLE CONNECTOR.....	200008-00
11.....2.....	2	13" SAFETY CABLES.....	650646-13
12.....4.....	4	1" x 3/4" x 0.219 WALL TUBE.....	A000558
13.....2.....	2	1 1/4" ROUND x 3/4" x 0.250 WALL TUBE.....	A000559
14.....2.....	2	1 1/4" ROUND x 7/8" x 0.250 WALL TUBE.....	A000481
15.....1.....	1	MAIN RECEIVER.....	C001080
16.....1.....	1	DRIVER SIDE ARM.....	C001368
17.....1.....	1	PASSENGER SIDE ARM.....	C001369
18.....1.....	1	DRIVER SIDE BRACE.....	C000295
19.....1.....	1	PASSENGER SIDE BRACE.....	C000296
.....2.....	2	ZIP TIE.....	300140-00



# BASEPLATE KIT INSTALLATION INSTRUCTIONS

**KIT# 1555-5**

07/21/21  
KS

ROADMASTER, Inc. 6110 NE 127th Ave. Vancouver, WA 98682 360-896-0407 fax 360-735-9300 www.roadmasterinc.com

This is one of our XL series brackets, which allows the visible, front portion of the brackets to be easily removed from the front of the vehicle. (Fig.A). The kit consists of the main receiver brace, front braces, rear side braces, and a hardware pack. The main receiver brace replaces the bumper core behind the front bumper fascia, and mounts to the front frame and radiator support area on each side. Before starting the installation, lay out the kit components in order, starting with step 2. This will give you a visual idea of how the components work and will also confirm that everything is present and accounted for.



**IMPORTANT:** All baseplates **must** be assembled with all the bolts left loose for final adjustment and positioning (before tightening) unless otherwise instructed. All bolts **must** be torqued for proper strength. If more than one bolt is used per fastening point, the diagram may only show one. Use flat washers over all slotted holes and lock washers on all fasteners.

## WARNING

Failure to heed these warnings or follow the installation instructions may result in a voided warranty, loss of towed vehicle, personal injury or death.

- Do not weld or modify this baseplate or its components. Welding or modification will void the warranty.
- Do not use this document as a basis to design/fabricate a baseplate, as it may not show all parts or structural components.
- We strongly recommend professional installation.
- If the towed vehicle has been in an accident, it must be properly repaired before attaching the baseplate. Do not install the baseplate if any structural frame damage is found.
- The installer must use all bolts and parts supplied. If running changes were made by the vehicle manufacturer after this kit was designed, some bolts or other fasteners may no longer be the correct size. It is the installer's responsibility to verify this kit is securely fastened to the vehicle.
- Use Loctite® Red on all bolts used to secure this baseplate. Torque all bolts to the specifications found at the end of these instructions. Do not over-torque the bolts or failure may occur.
- The installer must inspect the baseplate to ensure adequate clearance, particularly around hoses, air conditioner lines, radiators, etc. or non-warranty failure may result.
- Roadmaster manufactures many styles of baseplates. If your baseplate has removable arms, they must be removed before driving the vehicle, unless the arms can be pinned or padlocked in place. If not secured, the arms could vibrate out.
- Some motorhome chassis have such a tight turning radius that you can damage your motorhome, towed vehicle, tow bar or baseplate while turning sharply. Before getting on the road, test your turning radius in an empty parking lot. Turning too sharply could result in non-warranty damage to your towing system, motorhome and/or towed vehicle.
- Do not back up with the towed vehicle attached or non-warranty damage will occur to your towing system or vehicles.
- The safety cables must connect the towing vehicle to the towed vehicle frame to frame, with the cables crossed, with enough slack for sharp turns. See cable instructions for proper routing. Failure to do so will result in non-warranty damage and/or the loss of the towed vehicle.
- This kit is designed for use with ROADMASTER tow bars and ROADMASTER adapters only. Using this kit with other brands, without an approved ROADMASTER adapter, may result in non-warranty damage or injury.
- Receiver extensions and out-of-level towing situations of 3 inches or more. This can cause the system to swing much higher and lower, causing excessive strain on the tow bar, baseplate and frame. That can cause the towing system to fail, causing property damage, personal injury or even death. If you must use a receiver extension or drop hitch to tow, it will reduce your receiver's weight capacity by 1/3 to avoid damaging your system. Never use more than one extension and/or drop hitch, as this will void your warranty.
- Every 3,000 miles, the owner must inspect all mounting points for cracks or fatigue, and check the fasteners for proper torque, according to the bolt torque requirements chart on the last page of these instructions.
- The owner must follow the vehicle manufacturer's instructions to prepare the vehicle for towing. Failure to do so may cause severe damage to the vehicle.
- This baseplate is only warranted for the original installation. Installing a used baseplate on another vehicle is not recommended and will void the warranty.



# BASEPLATE KIT INSTALLATION INSTRUCTIONS

**KIT# 1555-5**

07/21/21  
KS

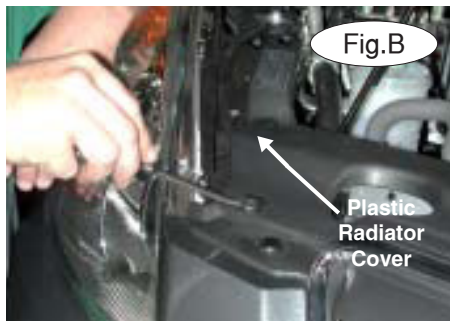
ROADMASTER, Inc. 6110 NE 127th Ave. Vancouver, WA 98682 360-896-0407 fax 360-735-9300 www.roadmasterinc.com

1. **Important:** please use all supplied bolts and parts and read all instructions carefully before beginning this installation. The majority of questions you may have can be answered within the text, and proper installation will ensure safe and secure travel. Now, begin the installation by removing the nine plastic fasteners on the top of the plastic grille cover (Fig.B).

2. Remove one 10mm bolt on the battery strap (Fig.C).

3. Remove the plastic radiator cover (Fig.B).

4. Remove one 8mm bolt (on each side), which is located at the outside corner of the fender well (Fig.D).



5. Remove one Phillips screw (on each side), at the bottom of the fender well (Fig.E).

6. Remove the 16 plastic fasteners from the splash shield (Fig.F), then remove the splash shield.

7. Unplug the fog lights, if the vehicle is so equipped (Fig.G).



8. Remove the fascia, by pulling forward from the edge of the fender well (Fig.H).

9. Remove the outside temperature sensor from the bumper core and use the two supplied zip ties to reattach the temperature sensor to the main brace, after installation (Fig.I).





# BASEPLATE KIT INSTALLATION INSTRUCTIONS

**KIT# 1555-5**

07/21/21  
KS

ROADMASTER, Inc. 6110 NE 127th Ave. Vancouver, WA 98682 360-896-0407 fax 360-735-9300 www.roadmasterinc.com

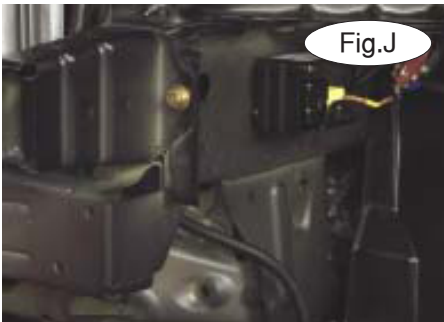


Fig.J

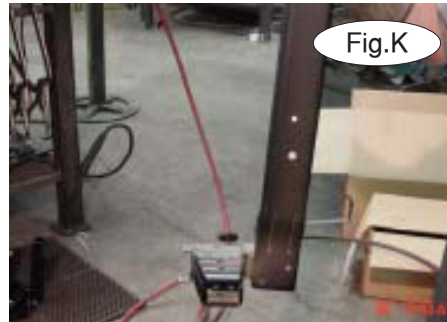


Fig.K



Fig.L

10. Now, find seven to eight 12mm bolts – four or five on the passenger side, and three on the driver's side, which hold the steel bumper core and mounts. Remove all these bolts (Fig.K), then pull forward to remove the bumper core and the bumper core supports (Fig.L). The bumper core is replaced by the receiver brace and will not be reinstalled. *Note:* Retain the bumper core and attachment hardware so that it can be replaced if the bracket is ever removed

11. Loosen the 12mm bolt in each horn mount (Fig.M).



Fig.M



Fig.N

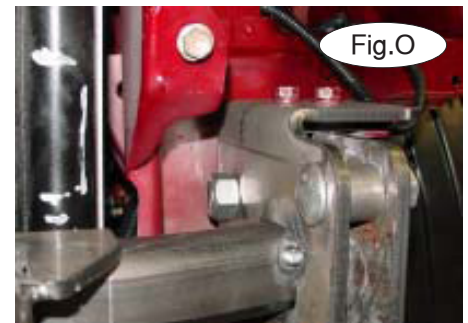


Fig.O

12. Working on the driver's side, put a  $\frac{1}{2}$ " x 2" carriage bolt through the rear mounting hole in a rear side mounting brace. Insert this brace into the front of the formed frame tube, with the rear bolt through a corresponding hole in the bottom of the frame. Secure with a  $\frac{1}{2}$ " nut, clipped plate washer, lock washer and nut (Fig.M). Leave loose at this time.

13. Repeat step 12 for the passenger side. *Note:* An additional fender well fastener can be removed, and the fender liner pushed back, to allow access to the rear mounting bolt on the passenger side (Fig.N).

14. Hold the main receiver brace between the frame tubes and bolt through the two top holes on each side with four of the bolts removed from the bumper core in step 10 (Fig.O). Leave loose at this time.

15. Using the existing frame side hole (Fig.P), start with a  $\frac{5}{8}$ " x  $3\frac{1}{2}$ " bolt and  $\frac{5}{8}$ " flat washer. Then, on the inside of the frame, use a  $\frac{7}{8}$ " x  $1\frac{1}{4}$ " O.D. pipe spacer. Next, use a  $\frac{3}{4}$ " x  $1\frac{1}{4}$ " pipe spacer, and then the lock washer and nut, as shown in Fig.Q. Repeat this process for the other side (Fig.P and Fig.Q).

16. Bolt through the two front holes on each side in the receiver brace and side braces with  $\frac{1}{2}$ " x 2" carriage bolts, flat washers,  $\frac{3}{4}$ " x 1" spacers, lock washers and nuts (Fig.P, Fig.Q and Fig.R).

17. Torque all bolts to the mounting specifications on the next page (Fig.R).



Fig.P



Fig.Q



# BASEPLATE KIT INSTALLATION INSTRUCTIONS

**KIT# 1555-5**

07/21/21  
KS

ROADMASTER, Inc. 6110 NE 127th Ave. Vancouver, WA 98682 360-896-0407 fax 360-735-9300 www.roadmasterinc.com

18. Tighten the horns loosened in step 11, bending or displacing the mounting to prevent the horns from touching any part of the vehicle or the brace. Note: any contact with any object other than the horn mount will either alter or prevent sound output.

19. Reverse steps 1 through 8 to reinstall the bumper fascia and top cover.



Fig.R

20. To allow access for the draw pin, trim a small portion of the front grille (Fig.S), then insert the front braces into the receiver tubes. Pin them with 5/8" draw pins and spring pins.

21. Install the safety cables and connectors.

22. Install the tow bar according to the manufacturer's instructions and torque all mounting bolts to the specifications below.

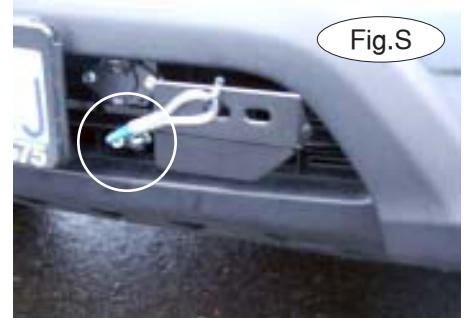


Fig.S

## BOLT TORQUE REQUIREMENTS

Note: The torque values represented below are intended as general guidelines. Torque requirements for specific applications may vary. Roadmaster does not warrant this information to be accurate for all applications and disclaims all liability for any claims or damages which may result from its use.

### STANDARD BOLTS

Thread Size	Grade	Torque
5/16.....	5.....	13 ft./lb.
3/8.....	5.....	23 ft./lb.
7/16.....	5.....	37 ft./lb.
1/2.....	5.....	56 ft./lb.
5/8.....	5.....	150 ft./lb.

### METRIC BOLTS

Thread Size	Grade	Plated / Unplated
8mm-1.0 .....	8.8 .....	20 ft./lb. 18 ft./lb.
8mm-1.25 .....	8.8 .....	19 ft./lb. 18 ft./lb.
10mm-1.25 .....	8.8 .....	38 ft./lb. 36 ft./lb.
10mm-1.5 .....	8.8 .....	37 ft./lb. 35 ft./lb.

### METRIC BOLTS

Thread Size	Grade	Plated / Unplated
12mm-1.25 .....	8.8 .....	70 ft./lb. 65 ft./lb.
12mm-1.5 .....	8.8 .....	66 ft./lb. 61 ft./lb.
12mm-1.75 .....	8.8 .....	65 ft./lb. 60 ft./lb.
14mm-2.0 .....	8.8 .....	104 ft./lb. 97 ft./lb.

All illustrations and specifications contained herein are based on the latest information available at the time of publication approval. ROADMASTER, INC. reserves the right to make changes at any time without notice in material, specification and models or to discontinue models.