

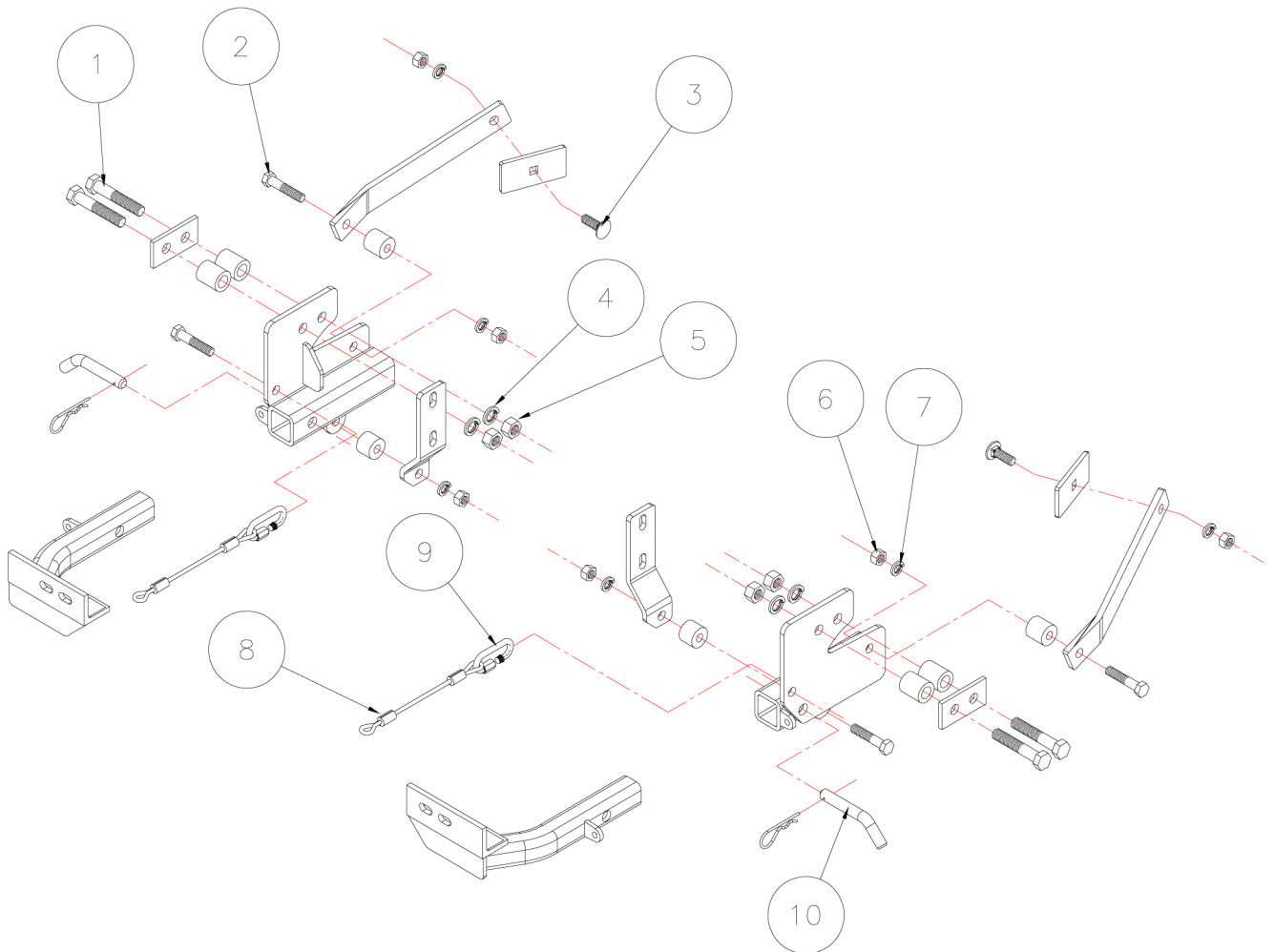


BASEPLATE KIT INSTALLATION INSTRUCTIONS

KIT# 266-1

11/08/07
KS

ROADMASTER, Inc. 6110 NE 127th Ave. Vancouver, WA 98682 360-896-0407 fax 360-735-9300 www.roadmasterinc.com



| Item | Qty | Length | Width | Hardware | Part No. |
|------|-----|--------|-------|--------------------------------|-----------|
| 1 | 4 | 3 1/2" | 5/8" | 5/8" x 3 1/2" BOLT | 350163-00 |
| 2 | 4 | 2 1/2" | 1/2" | 1/2" x 2 1/2" BOLT | 350099-00 |
| 3 | 2 | 1 1/2" | 1/2" | 1/2" x 1 1/2" CARRIAGE BOLT | 350362-00 |
| 4 | 4 | | 5/8" | LOCK WASHER | 350313-00 |
| 5 | 4 | | 5/8" | NUT | 350262-00 |
| 6 | 6 | | 1/2" | NUT | 350258-00 |
| 7 | 6 | | 1/2" | LOCK WASHER | 350309-00 |
| 8 | 2 | 13" | | SAFETY CABLES, 8,000 lb. rated | 650648-13 |
| 9 | 2 | | | CONNECTORS | 200008-00 |
| 10 | 2 | | | DRAW PIN / SPRING PIN | 357035-00 |



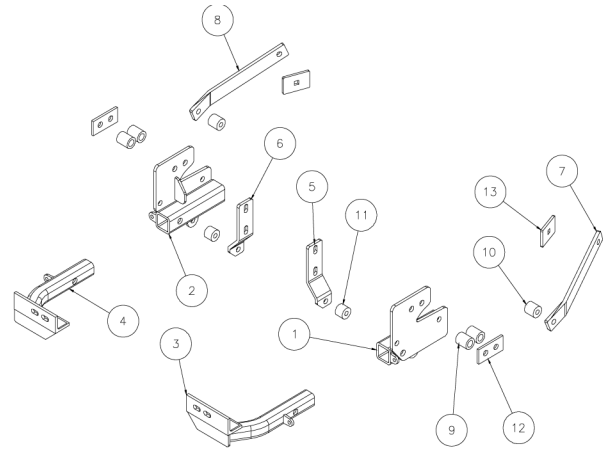
BASEPLATE KIT INSTALLATION INSTRUCTIONS

KIT# 266-1

11/08/07
KS

ROADMASTER, Inc. 6110 NE 127th Ave. Vancouver, WA 98682 360-896-0407 fax 360-735-9300 www.roadmasterinc.com

| Item | Qty | Name | Assembly |
|------|-----|----------|--|
| 1 | 1 | C-000559 | DRIVER SIDE RECEIVER BRACE WELDMENT |
| 2 | 1 | C-000560 | PASSENGER SIDE RECEIVER |
| 3 | 1 | C-000561 | DRIVER SIDE ARM BRACE |
| 4 | 1 | C-000562 | PASSENGER SIDE ARM |
| 5 | 1 | B-000396 | DRIVER SIDE UPPER BRACE |
| 6 | 1 | B-000397 | PASSENGER SIDE UPPER BRACE |
| 7 | 1 | B-000398 | DRIVER SIDE REAR BRACE |
| 8 | 1 | B-000399 | PASSENGER SIDE REAR BRACE |
| 9 | 4 | A-000518 | 1 1/4" O.D. x 1 1/2" SPACER TUBE |
| 10 | 2 | A-000856 | 1 1/4" O.D. x 1 1/4" SPACER TUBE |
| 11 | 2 | A-000880 | 1 1/4" O.D. x 1" SPACER TUBE |
| 12 | 2 | A-000968 | BACKING PLATE |
| 13 | 2 | A-000969 | SQUARE HOLE BACKING PLATE |



IMPORTANT: All baseplates **must** be assembled with all the bolts left loose for final adjustment and positioning (before tightening) unless otherwise instructed. All bolts **must** be torqued for proper strength. If more than one bolt is used per fastening point, the diagram may only show one. Use flat washers over all slotted holes and lock washers on all fasteners.

WARNING

Failure to heed these warnings or follow the installation instructions may result in a voided warranty, loss of towed vehicle, personal injury or death.

- Do not weld or modify this baseplate or its components. Welding or modification will void the warranty.
- Do not use this document as a basis to design/fabricate a baseplate, as it may not show all parts or structural components.
- We strongly recommend professional installation.
- If the towed vehicle has been in an accident, it must be properly repaired before attaching the baseplate. Do not install the baseplate if any structural frame damage is found.
- The installer must use all bolts and parts supplied. If running changes were made by the vehicle manufacturer after this kit was designed, some bolts or other fasteners may no longer be the correct size. It is the installer's responsibility to verify this kit is securely fastened to the vehicle.
- Use Loctite® Red on all bolts used to secure this baseplate. Torque all bolts to the specifications found at the end of these instructions. Do not over-torque the bolts or failure may occur.
- The installer must inspect the baseplate to ensure adequate clearance, particularly around hoses, air conditioner lines, radiators, etc. or non-warranty failure may result.
- Roadmaster manufactures many styles of baseplates. If your baseplate has removable arms, they must be removed before driving the vehicle, unless the arms can be pinned or padlocked in place. If not secured, the arms could vibrate out.
- Some motorhome chassis have such a tight turning radius that you can damage your motorhome, towed vehicle, tow bar or baseplate while turning sharply. Before getting on the road, test your turning radius in an empty parking lot. Turning too sharply could

result in non-warranty damage to your towing system, motorhome and/or towed vehicle.

- Do not back up with the towed vehicle attached or non-warranty damage will occur to your towing system or vehicles.
- The safety cables must connect the towing vehicle to the towed vehicle frame to frame, with the cables crossed, with enough slack for sharp turns. See cable instructions for proper routing. Failure to do so will result in non-warranty damage and/or the loss of the towed vehicle.
- This kit is designed for use with ROADMASTER tow bars and ROADMASTER adapters only. Using this kit with other brands, without an approved ROADMASTER adapter, may result in non-warranty damage or injury.
- Receiver extensions and out-of-level towing situations of 3 inches or more. This can cause the system to swing much higher and lower, causing excessive strain on the tow bar, baseplate and frame. That can cause the towing system to fail, causing property damage, personal injury or even death. If you must use a receiver extension or drop hitch to tow, it will reduce your receiver's weight capacity by 1/3 to avoid damaging your system. Never use more than one extension and/or drop hitch, as this will void your warranty.
- Every 3,000 miles, the owner must inspect all mounting points for cracks or fatigue, and check the fasteners for proper torque, according to the bolt torque requirements chart on the last page of these instructions.
- The owner must follow the vehicle manufacturer's instructions to prepare the vehicle for towing. Failure to do so may cause severe damage to the vehicle.
- This baseplate is only warranted for the original installation. Installing a used baseplate on another vehicle is not recommended and will void the warranty.



BASEPLATE KIT INSTALLATION INSTRUCTIONS

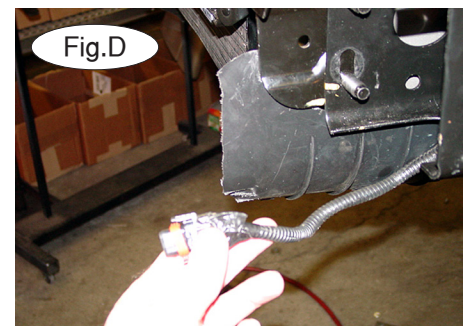
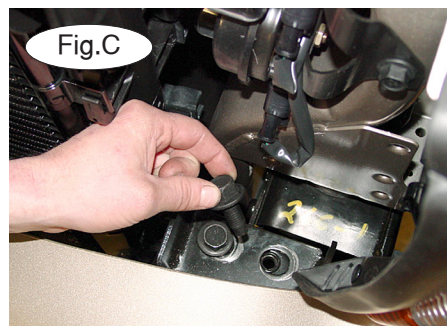
KIT# 266-1

11/08/07
KS

ROADMASTER, Inc. 6110 NE 127th Ave. Vancouver, WA 98682 360-896-0407 fax 360-735-9300 www.roadmasterinc.com

This bracket kit is one of our XL series with removable front braces. The kit consists of two rear receiver braces which mount inside the front frame tubes, two inner braces, two rear braces and removable front braces (Fig.A). Everything but the front arm braces install behind the bumper fascia. The front bumper will have to be removed for the installation.

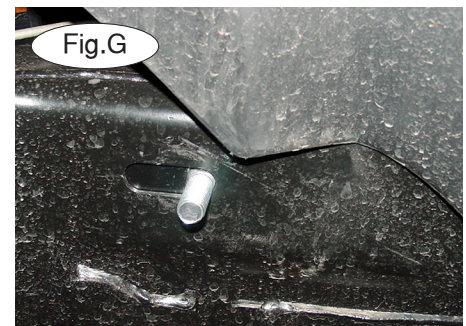
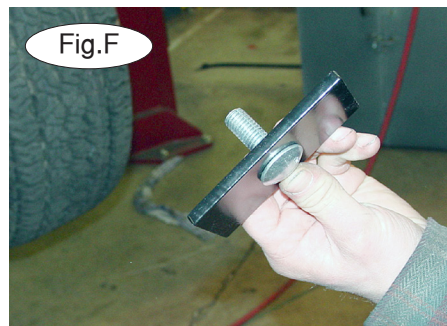
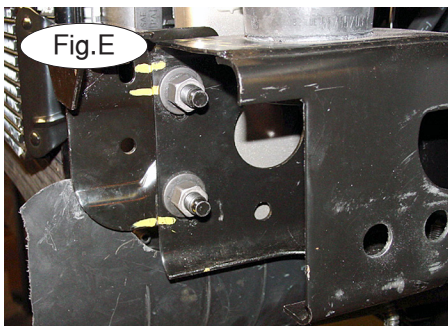
1. **Important:** please use all supplied bolts and parts and read all instructions carefully before beginning this installation. The majority of questions you may have can be answered within the text, and proper installation will ensure safe and secure travel. Now, begin the installation.



Remove three torx screws in each fender well (Fig. B). Disconnect the fog lights, if the vehicle is so equipped (Fig.D). Then, remove four bolts, two on the top of each frame tube (Fig.C). Now, remove two bolts on the bumper side braces on each side. These are located on the sides of the frame tubes.

2. Use two screwdrivers to pop the plastic fasteners loose on the bottom radiator flap, pull free and set aside.

3. Mark the frame where the bumper brackets are located so that the bumper can be repositioned to the same spot. Remove the shoulder nuts inside each frame tube holding the bumper brackets. This is where the new inside braces will be mounted (Fig.E).



4. Working on one side at a time, locate a slotted hole about one foot back from the front of the frame. Fishwire a $\frac{1}{2}$ " x $1\frac{1}{2}$ " carriage bolt and $\frac{1}{4}$ " x 2" x 3" backing plate through the front of the frame into the slotted hole (Fig.F,G.).

5. Bolt through the rear brace with a $\frac{1}{2}$ " nut and lock washer (Fig.H).

6. Enlarge the mounting holes in a bumper side brace then assemble the side brace, two $\frac{5}{8}$ " x $3\frac{1}{2}$ " bolts, and spacers as shown in Figure I.

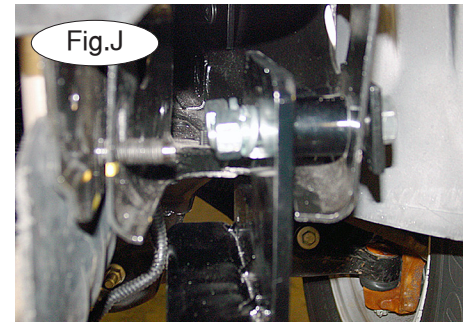
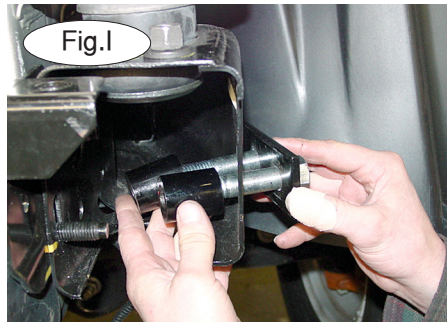


BASEPLATE KIT INSTALLATION INSTRUCTIONS

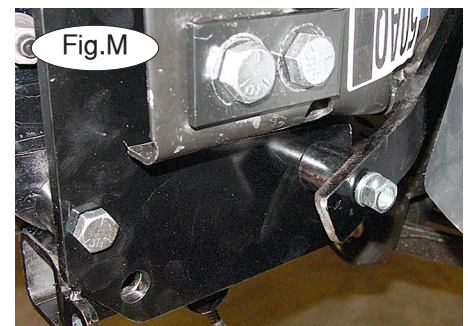
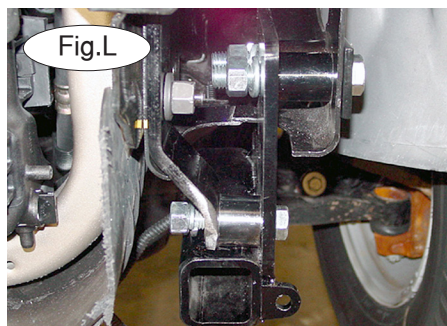
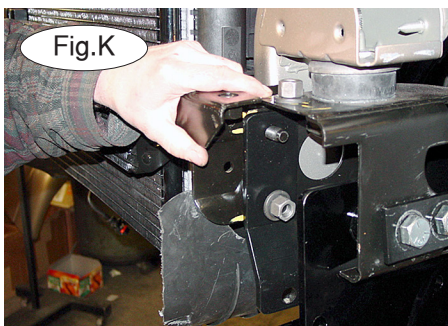
KIT# 266-1

11/08/07
KS

ROADMASTER, Inc. 6110 NE 127th Ave. Vancouver, WA 98682 360-896-0407 fax 360-735-9300 www.roadmasterinc.com



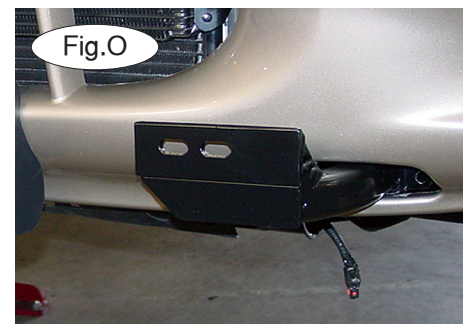
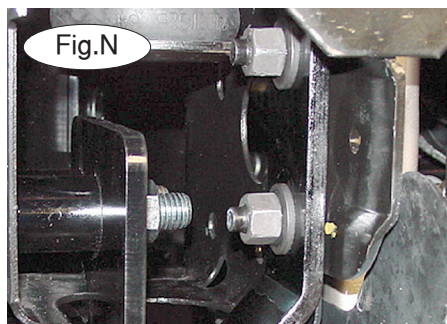
7. Bolt through the receiver brace and frame and finish with $\frac{1}{2}$ " nuts and lock washers (Fig.J).
8. Put the inner brace over the bumper bracket bolts and secure with the original shoulder nuts as shown (Fig.K).
9. Bolt through the bottom of the inner brace and receiver brace with a $\frac{1}{2}$ " x $2\frac{1}{2}$ " bolt, $1\frac{1}{4}$ " spacer, lock washer and nut (Fig.L).



10. Bolt the receiver brace to the rear brace with $\frac{1}{2}$ " x $2\frac{1}{2}$ " bolt, $1\frac{1}{4}$ " spacer flat washers, lock washer and nut (Fig.M).

11. Repeat steps 1 through 10 for the remaining side.

12. Level and align the receiver braces with each other and tighten the two outside frame bolts (Fig.N) on each side.



13. Align the bumper braces to their original marks and tighten the shoulder nuts.

14. Torque all mounting bolts to the specifications on the last page.

15. Replace the bumper and fascia, reversing steps 1 to 2.

16. Insert the front arm braces and secure with $\frac{5}{8}$ " draw pins and safety pins (Fig.O).

17. Install the tow bar according to the manufacturer's instructions and torque all bolts to the specifications at the end of these instructions.

18. Attach one end of the 13" safety cables to the front holes on the receiver braces and the other end to the tow vehicle's safety cables and the tow bar.



BASEPLATE KIT INSTALLATION INSTRUCTIONS

KIT# 266-1

11/08/07
KS

ROADMASTER, Inc. 6110 NE 127th Ave. Vancouver, WA 98682 360-896-0407 fax 360-735-9300 www.roadmasterinc.com

BOLT TORQUE REQUIREMENTS

Note: The torque values represented below are intended as general guidelines. Torque requirements for specific applications may vary. Roadmaster does not warrant this information to be accurate for all applications and disclaims all liability for any claims or damages which may result from its use.

STANDARD BOLTS

| Thread Size | Grade | Torque |
|-------------|--------|-------------|
| 5/16..... | 5..... | 13 ft./lb. |
| 3/8..... | 5..... | 23 ft./lb. |
| 7/16..... | 5..... | 37 ft./lb. |
| 1/2..... | 5..... | 56 ft./lb. |
| 5/8..... | 5..... | 150 ft./lb. |

METRIC BOLTS

| Thread Size | Grade | Plated / Unplated |
|-----------------|-----------|-----------------------|
| 8mm-1.0 | 8.8 | 20 ft./lb. 18 ft./lb. |
| 8mm-1.25 | 8.8 | 19 ft./lb. 18 ft./lb. |
| 10mm-1.25 | 8.8 | 38 ft./lb. 36 ft./lb. |
| 10mm-1.5 | 8.8 | 37 ft./lb. 35 ft./lb. |

METRIC BOLTS

| Thread Size | Grade | Plated / Unplated |
|-----------------|-----------|------------------------|
| 12mm-1.25 | 8.8 | 70 ft./lb. 65 ft./lb. |
| 12mm-1.5 | 8.8 | 66 ft./lb. 61 ft./lb. |
| 12mm-1.75 | 8.8 | 65 ft./lb. 60 ft./lb. |
| 14mm-2.0 | 8.8 | 104 ft./lb. 97 ft./lb. |

All illustrations and specifications contained herein are based on the latest information available at the time of publication approval. ROADMASTER, INC. reserves the right to make changes at any time without notice in material, specification and models or to discontinue models.