



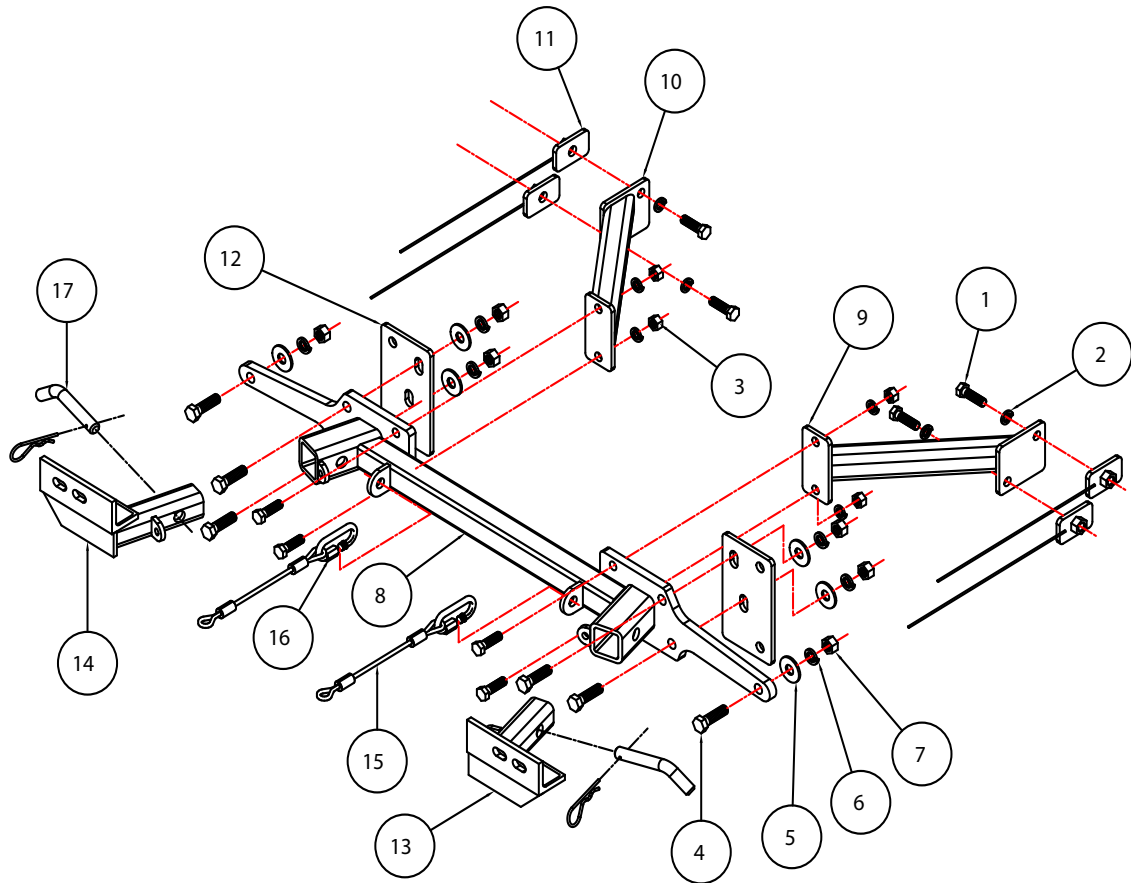
# BASEPLATE KIT INSTALLATION INSTRUCTIONS

**KIT# 282-1**

05/10/13  
KS

ROADMASTER, Inc. 6110 NE 127th Ave. Vancouver, WA 98682 360-896-0407 fax 360-735-9300 www.roadmasterinc.com

ROADMASTER, INC.



Item	Qty	Length	Width	Description	Part #
1	8	1 1/2"	7/16"	BOLT	350074-00
2	8	7/16"		LOCK WASHER	350307-00
3	4	7/16"		NUT	350256-00
4	6	1 3/4"	1/2"	BOLT	350096-00
5	6	1/2"		FLAT WASHER	350308-20
6	6	1/2"		LOCK WASHER	350309-00
7	6	1/2"		NUT	350258-00
8	1			MAIN RECEIVER BRACE WELDMENT	C-001406
9	1			DRIVER SIDE REAR WELDMENT	C-001356
10	1			PASSENGER SIDE REAR WELDMENT	C-001357
11	4			1 1/2" x 2 1/2" THREADED BACKING PLATE W/7/16" NUT	C-001358
12	2			1/4" x 6 1/2" x 3 3/4" BACKING PLATE	A-002238
13	1			DRIVER SIDE ARM WELDMENT	C-001407
14	1			PASSENGER SIDE ARM WELDMENT	C-001408
15	2			8" SAFETY CABLES	650648-8
16	2			CABLE CONNECTORS	200008-00
17	2			DRAW PIN/SPRING PIN	357035-00



# BASEPLATE KIT INSTALLATION INSTRUCTIONS

**KIT# 282-1**

05/10/13  
KS

ROADMASTER, Inc. 6110 NE 127th Ave. Vancouver, WA 98682 360-896-0407 fax 360-735-9300 www.roadmasterinc.com

This is one of our XL series brackets, which allows the visible front portion of the bracket to be easily removed from the front of the vehicle (Fig.A). The bracket kit consists of a main receiver brace, two rear braces, two removable front braces and a hardware pack. The main receiver brace mounts to the end of the frame horns. The two rear braces mount to the main receiver brace and the frame rails.



Before starting the installation, lay out the kit components in order, as they will be used. This will give you a visual idea of how the components work, and will also confirm that everything is present and accounted for.

**IMPORTANT:** All baseplates must be assembled with all the bolts left loose for final adjustment and positioning (before

tightening) unless otherwise instructed. All bolts **must** be torqued for proper strength. If more than one bolt is used per fastening point, the diagram may only show one. Use flat washers over all slotted holes and lock washers on all fasteners.

## WARNING

Failure to heed these warnings or follow the installation instructions may result in a voided warranty, loss of towed vehicle, personal injury or death.

- Do not weld or modify this baseplate or its components. Welding or modification will void the warranty.
- Do not use this document as a basis to design/fabricate a baseplate, as it may not show all parts or structural components.
- We strongly recommend professional installation.
- If the towed vehicle has been in an accident, it must be properly repaired before attaching the baseplate. Do not install the baseplate if any structural frame damage is found.
- The installer must use all bolts and parts supplied. If running changes were made by the vehicle manufacturer after this kit was designed, some bolts or other fasteners may no longer be the correct size. It is the installer's responsibility to verify this kit is securely fastened to the vehicle.
- Use Loctite® Red on all bolts used to secure this baseplate. Torque all bolts to the specifications found at the end of these instructions. Do not over-torque the bolts or failure may occur.
- The installer must inspect the baseplate to ensure adequate clearance, particularly around hoses, air conditioner lines, radiators, etc. or non-warranty failure may result.
- Roadmaster manufactures many styles of baseplates. If your baseplate has removable arms, they must be removed before driving the vehicle, unless the arms can be pinned or padlocked in place. If not secured, the arms could vibrate out.
- Some motorhome chassis have such a tight turning radius that you can damage your motorhome, towed vehicle, tow bar or baseplate while turning sharply. Before getting on the road, test your turning radius in an empty parking lot. Turning too sharply could result in non-warranty damage to your towing system, motorhome and/or towed vehicle.
- Do not back up with the towed vehicle attached or non-warranty damage will occur to your towing system or vehicles.
- The safety cables must connect the towing vehicle to the towed vehicle frame to frame, with the cables crossed, with enough slack for sharp turns. See cable instructions for proper routing. Failure to do so will result in non-warranty damage and/or the loss of the towed vehicle.
- This kit is designed for use with ROADMASTER tow bars and ROADMASTER adapters only. Using this kit with other brands, without an approved ROADMASTER adapter, may result in non-warranty damage or injury.
- Receiver extensions and out-of-level towing situations of 3 inches or more. This can cause the system to swing much higher and lower, causing excessive strain on the tow bar, baseplate and frame. That can cause the towing system to fail, causing property damage, personal injury or even death. If you must use a receiver extension or drop hitch to tow, it will reduce your receiver's weight capacity by 1/3 to avoid damaging your system. Never use more than one extension and/or drop hitch, as this will void your warranty.
- Every 3,000 miles, the owner must inspect all mounting points for cracks or fatigue, and check the fasteners for proper torque, according to the bolt torque requirements chart on the last page of these instructions.
- The owner must follow the vehicle manufacturer's instructions to prepare the vehicle for towing. Failure to do so may cause severe damage to the vehicle.
- This baseplate is only warranted for the original installation. Installing a used baseplate on another vehicle is not recommended and will void the warranty.

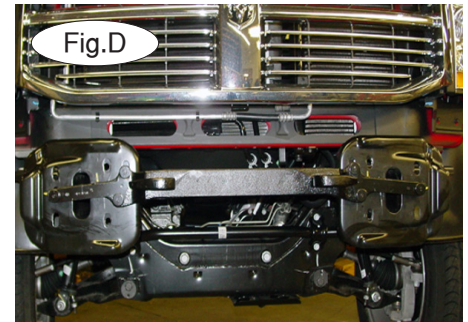
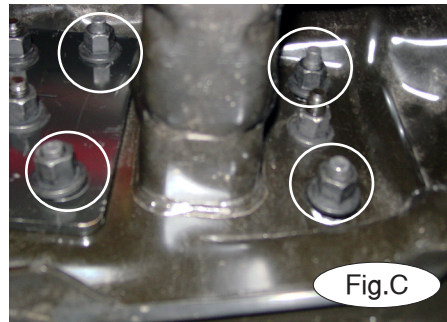
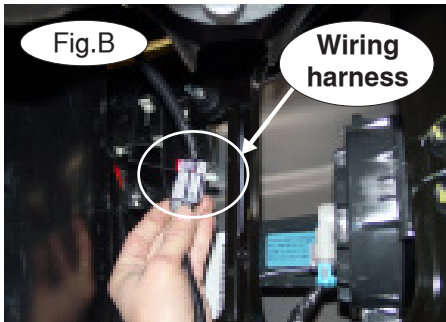


# BASEPLATE KIT INSTALLATION INSTRUCTIONS

**KIT# 282-1**

05/10/13  
KS

ROADMASTER, Inc. 6110 NE 127th Ave. Vancouver, WA 98682 360-896-0407 fax 360-735-9300 www.roadmasterinc.com



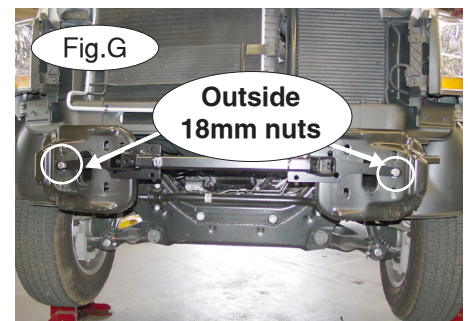
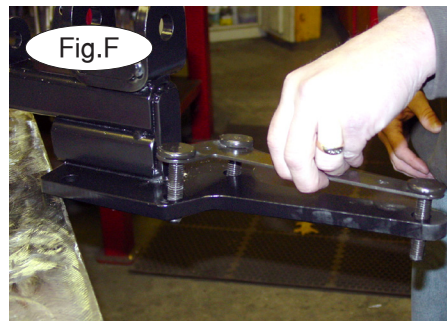
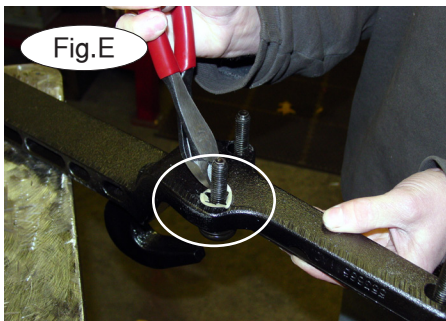
1. **Important:** please use all supplied bolts and parts and read all instructions carefully before beginning this installation. The majority of questions you may have can be answered within the text, and proper installation will ensure safe and secure travel. Now, begin the installation. Disconnect the fog light wiring harness on the driver's side (behind the bumper, if your vehicle is so equipped). *Note:* remove the upper half of the plug from the back side of the bumper (Fig.B).

2. Next, on each side, remove four 18mm (head) bumper mounting bolts attaching the bumper to the end of the frame (Fig.C).

3. Pull forward to remove the bumper.

4. Remove the tow hook assembly (Fig.D) by removing three 18mm nuts from the back side of each side of the tow hook assembly. *Note:* there are backing plates located behind both sides of the tow hook assembly. Set these aside and save to use with the installation of the main receiver brace.

**Note:** for vehicles not equipped with tow hooks, see the attached supplement.

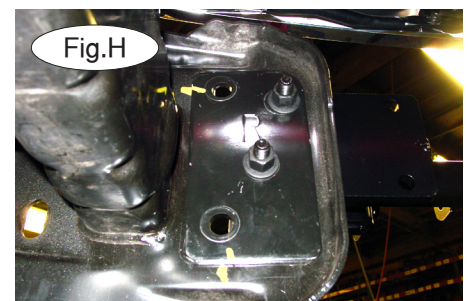


5. Remove the bolt bracket from the tow hook assembly by cutting off the retainer hook (Fig.E). Repeat for the other side. *Note:* the bolt brackets will be used to install the main receiver brace.

6. On both sides, install one of the bolt brackets onto the main receiver brace (Fig.F)

7. Now, install the main receiver brace using the same mounting holes the tow hook assembly was removed from. On both sides, replace the outside 18mm nut you removed in step 4 (Fig.G).

8. For each side, replace one of the backing plates and two of the 18mm nuts (Fig.H).



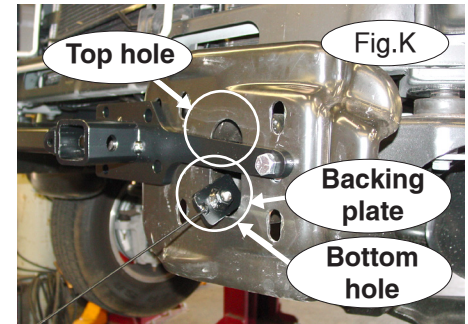
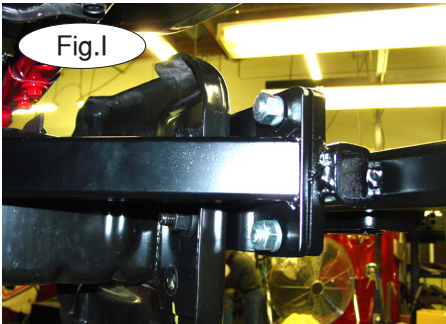


# BASEPLATE KIT INSTALLATION INSTRUCTIONS

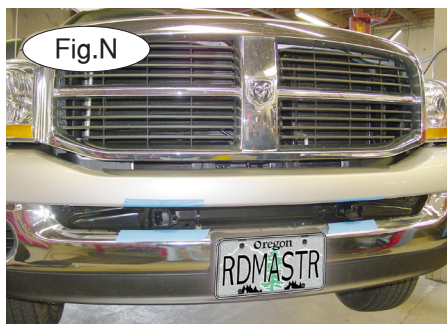
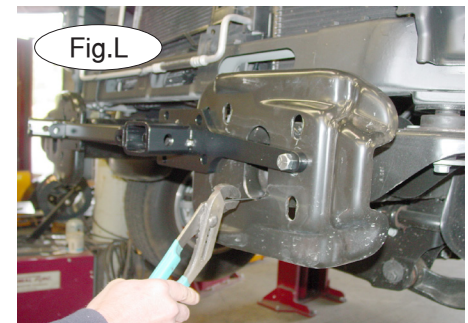
**KIT# 282-1**

05/10/13  
KS

ROADMASTER, Inc. 6110 NE 127th Ave. Vancouver, WA 98682 360-896-0407 fax 360-735-9300 www.roadmasterinc.com



9. On both sides, bolt one of the rear braces to the main receiver brace, using the two supplied 7/16" x 1 1/2" bolts, lock washers and nuts (Fig.I).
10. Hold the rear brace square against the side of the frame rail. Using the holes in the rear brace as a template, drill two 1/2" holes through the frame rail (Fig.J). Repeat for the other side.
11. Next, insert the 1/4" x 1 1/2" x 2 1/2" backing plate with the 7/16" nut and attached wire through the opening in the front of the frame rail (Fig.K). Bolt through the rear brace, frame rail and into the backing plate. Repeat this process for the top hole. Repeat this entire process for the other side.
12. Once the backing plate nuts are finger tight, use a pair of pliers to twist off the attached wire to the backing plates (Fig.L).
13. Now, replace the bumper. *Note:* use protective tape on the areas where the main receiver brace will be passing through the grille. This is done so you will not scratch the bumper when reinstalling it (Fig.M).
14. Next, replace the 18mm (head) mounting bolts removed in step 2.
15. Align the bumper and center the main receiver brace (Fig.N). Tighten all bolts to the torque specifications listed at the end of these instructions.  
*Note:* the 18mm (head) nuts will need to be torqued to the specifications listed for the 12mm x 1.75 bolt.
16. Replace the fog light wiring harness if your vehicle is so equipped.
17. Fit the front bracket arms into the front receiver braces, and secure them in place with the supplied 5/8" draw pins and spring pins.
18. Attach the 8" safety cables with the cable connectors (Q-Links) to the front of the receiver braces (Fig.O).
19. Attach the ends of the safety cables to the tow vehicle's safety cables and tow bar.
20. Install the tow bar to the mounting bracket according to the manufacturer's instructions.





# BASEPLATE KIT INSTALLATION INSTRUCTIONS

**KIT# 282-1**

05/10/13  
KS

ROADMASTER, Inc. 6110 NE 127th Ave. Vancouver, WA 98682 360-896-0407 fax 360-735-9300 www.roadmasterinc.com

## Supplemental Instructions

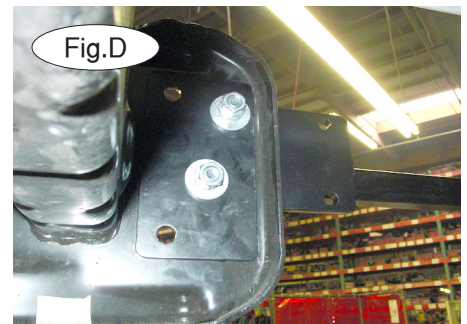
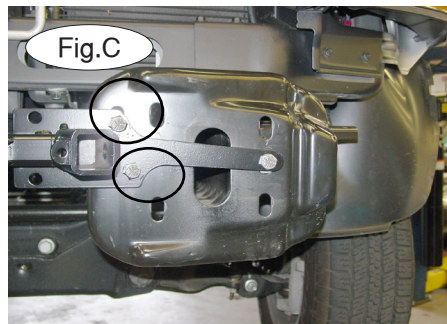
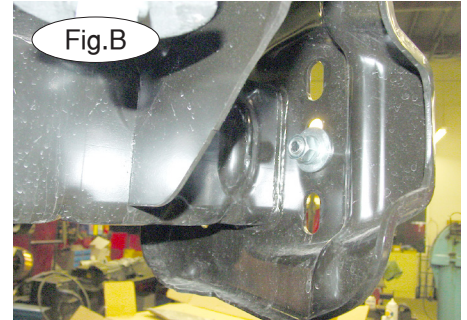
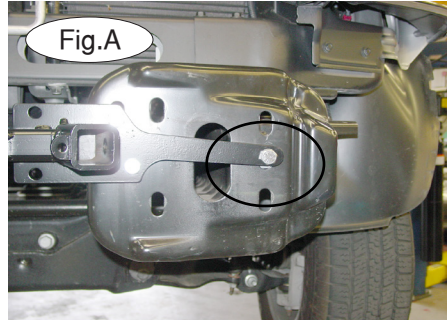
1. Place one supplied 1/2" x 1 3/4" bolt in each end of the main receiver brace (Fig.A).

2. Set the main receiver brace over the end of the frame (Fig.A). The main receiver brace should align with the existing holes.

3. Place the 1/2" flat washer, lock washer and nut on each bolt to hold it in place (Fig.B).

4. Next, insert two more 1/2" x 1 3/4" bolts in the two center holes in the main receiver brace (Fig.C). Place the backing plates over the bolts in the rear of the frame. Secure them in place with the 1/2" flat washers, lock washers and nuts (Fig.D). *Note:* leave all bolts for the main brace loose.

5. Now, proceed to step 9 for the rest of the installation.



### BOLT TORQUE REQUIREMENTS

Note: The torque values represented below are intended as general guidelines. Torque requirements for specific applications may vary. Roadmaster does not warrant this information to be accurate for all applications and disclaims all liability for any claims or damages which may result from its use.

#### STANDARD BOLTS

Thread Size	Grade	Torque
5/16.....	5.....	13 ft./lb.
3/8.....	5.....	23 ft./lb.
7/16.....	5.....	37 ft./lb.
1/2.....	5.....	56 ft./lb.
5/8.....	5.....	150 ft./lb.

#### METRIC BOLTS

Thread Size	Grade	Plated / Unplated
8mm-1.0.....	8.8.....	20 ft./lb. 18 ft./lb.
8mm-1.25.....	8.8.....	19 ft./lb. 18 ft./lb.
10mm-1.25.....	8.8.....	38 ft./lb. 36 ft./lb.
10mm-1.5.....	8.8.....	37 ft./lb. 35 ft./lb.

#### METRIC BOLTS

Thread Size	Grade	Plated / Unplated
12mm-1.25.....	8.8.....	70 ft./lb. 65 ft./lb.
12mm-1.5.....	8.8.....	66 ft./lb. 61 ft./lb.
12mm-1.75.....	8.8.....	65 ft./lb. 60 ft./lb.
14mm-2.0.....	8.8.....	104 ft./lb. 97 ft./lb.

All illustrations and specifications contained herein are based on the latest information available at the time of publication approval. ROADMASTER, INC. reserves the right to make changes at any time without notice in material, specification and models or to discontinue models.