

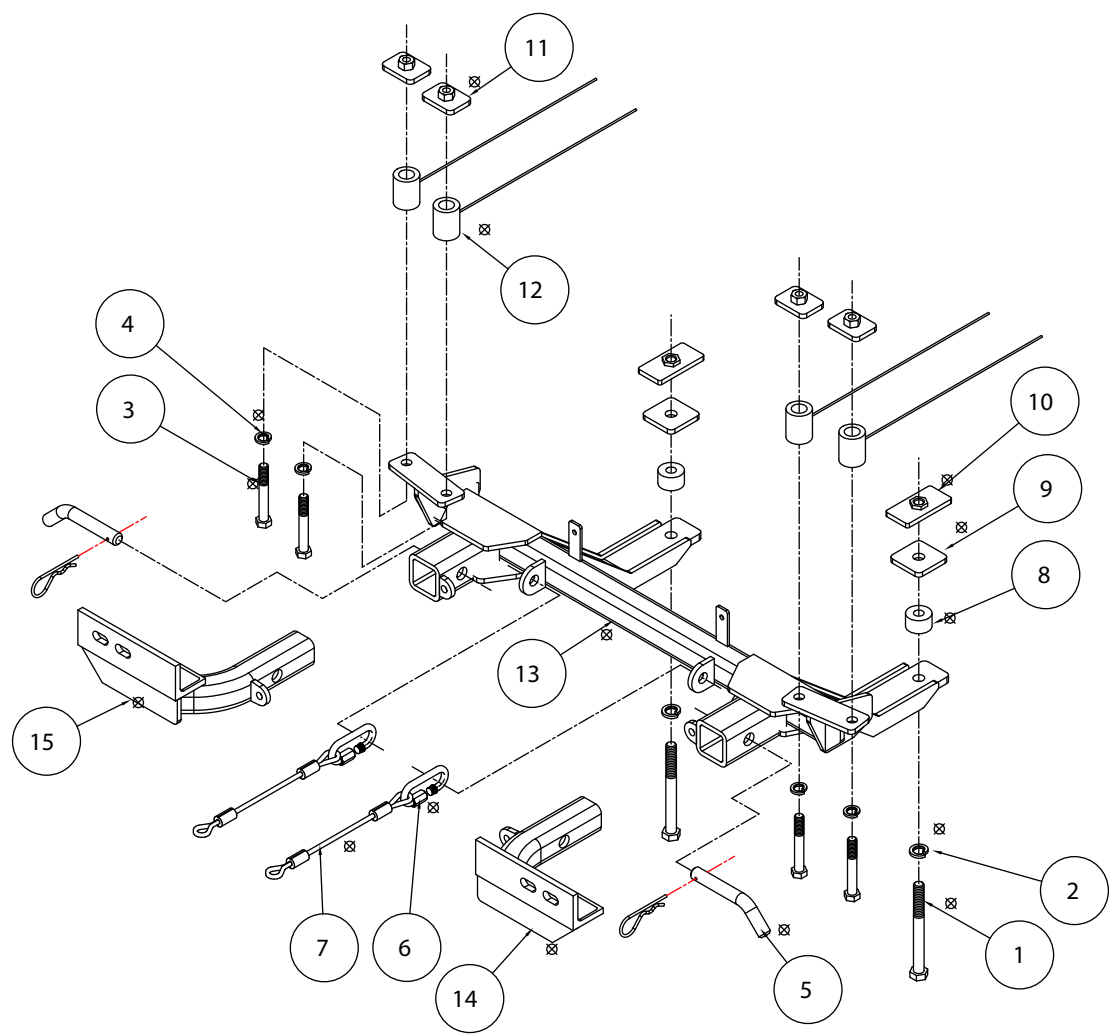


# BASEPLATE KIT INSTALLATION INSTRUCTIONS

**KIT# 287-1**

04/26/13  
KS

ROADMASTER, Inc. 6110 NE 127th Ave. Vancouver, WA 98682 360-896-0407 fax 360-735-9300 www.roadmasterinc.com



ITEM	QTY	NAME	MATERIAL
1	2	1/2" x 5" BOLT	350107-00
2	2	1/2" LOCK WASHER	350309-00
3	4	7/16" x 3" BOLT	350080-00
4	4	7/16" LOCK WASHER	350307-00
5	2	5/8" DRAW PIN W/ CLIP	357035-00
6	2	QUICK LINK	200008-00
7	2	SAFETY CABLE 12"	500646-12
8	2	1 1/4" O.D. x 3/4" PIPE SPACER	A-000873
9	2	1/4" x 2" x 2" BACKING PLATE W/ RD. HOLE	A-001066
10	2	3/16" x 1 1/2" x 3" THREADED BACKING PLATE	A-003079
11	4	1/4" x 1 1/2" x 2" BACKING PLATE W/ 7/16" NUT	C-001728
12	4	1 1/4" O.D. x 1 5/8" PIPE SPACER	C-001729
13	1	MAIN RECEIVER	C-001730
14	1	DRIVER SIDE ARM	C-001731
15	1	PASSENGER SIDE RECEIVER	C-001732



# BASEPLATE KIT INSTALLATION INSTRUCTIONS

**KIT# 287-1**

04/26/13  
KS

ROADMASTER, Inc. 6110 NE 127th Ave. Vancouver, WA 98682 360-896-0407 fax 360-735-9300 www.roadmasterinc.com

This bracket kit is one of our XL series, which allows the visible front portion of the brackets to be easily removed (Fig.A and Fig.B). The kit consists of the main receiver brace, removable front braces, rear braces, lower braces and a hardware pack.

The main receiver brace mounts to the front frame and bumper core on each side. The removable front braces insert into the receivers on each side and are secured with draw pins.

Before starting the installation, lay out the kit components in order, as they will be used. This will give you a visual idea of how the components work, and will also confirm that everything is present and accounted for.



**IMPORTANT:** All baseplates *must* be assembled with all the bolts left loose for final adjustment and positioning (before tightening) unless otherwise instructed. All bolts *must* be torqued for proper strength. If more than one bolt is used per fastening point, the diagram may only show one. Use flat washers over all slotted holes and lock washers on all fasteners.

## WARNING

Failure to heed these warnings or follow the installation instructions may result in a voided warranty, loss of towed vehicle, personal injury or death.

- Do not weld or modify this baseplate or its components. Welding or modification will void the warranty.
- Do not use this document as a basis to design/fabricate a baseplate, as it may not show all parts or structural components.
- We strongly recommend professional installation.
- If the towed vehicle has been in an accident, it must be properly repaired before attaching the baseplate. Do not install the baseplate if any structural frame damage is found.
- The installer must use all bolts and parts supplied. If running changes were made by the vehicle manufacturer after this kit was designed, some bolts or other fasteners may no longer be the correct size. It is the installer's responsibility to verify this kit is securely fastened to the vehicle.
- Use Loctite® Red on all bolts used to secure this baseplate. Torque all bolts to the specifications found at the end of these instructions. Do not over-torque the bolts or failure may occur.
- The installer must inspect the baseplate to ensure adequate clearance, particularly around hoses, air conditioner lines, radiators, etc. or non-warranty failure may result.
- Roadmaster manufactures many styles of baseplates. If your baseplate has removable arms, they must be removed before driving the vehicle, unless the arms can be pinned or padlocked in place. If not secured, the arms could vibrate out.
- Some motorhome chassis have such a tight turning radius that you can damage your motorhome, towed vehicle, tow bar or baseplate while turning sharply. Before getting on the road, test your turning radius in an empty parking lot. Turning too sharply could result in non-warranty damage to your towing system, motorhome and/or towed vehicle.
- Do not back up with the towed vehicle attached or non-warranty damage will occur to your towing system or vehicles.
- The safety cables must connect the towing vehicle to the towed vehicle frame to frame, with the cables crossed, with enough slack for sharp turns. See cable instructions for proper routing. Failure to do so will result in non-warranty damage and/or the loss of the towed vehicle.
- This kit is designed for use with ROADMASTER tow bars and ROADMASTER adapters only. Using this kit with other brands, without an approved ROADMASTER adapter, may result in non-warranty damage or injury.
- Receiver extensions and out-of-level towing situations of 3 inches or more. This can cause the system to swing much higher and lower, causing excessive strain on the tow bar, baseplate and frame. That can cause the towing system to fail, causing property damage, personal injury or even death. If you must use a receiver extension or drop hitch to tow, it will reduce your receiver's weight capacity by 1/3 to avoid damaging your system. Never use more than one extension and/or drop hitch, as this will void your warranty.
- Every 3,000 miles, the owner must inspect all mounting points for cracks or fatigue, and check the fasteners for proper torque, according to the bolt torque requirements chart on the last page of these instructions.
- The owner must follow the vehicle manufacturer's instructions to prepare the vehicle for towing. Failure to do so may cause severe damage to the vehicle.
- This baseplate is only warranted for the original installation. Installing a used baseplate on another vehicle is not recommended and will void the warranty.

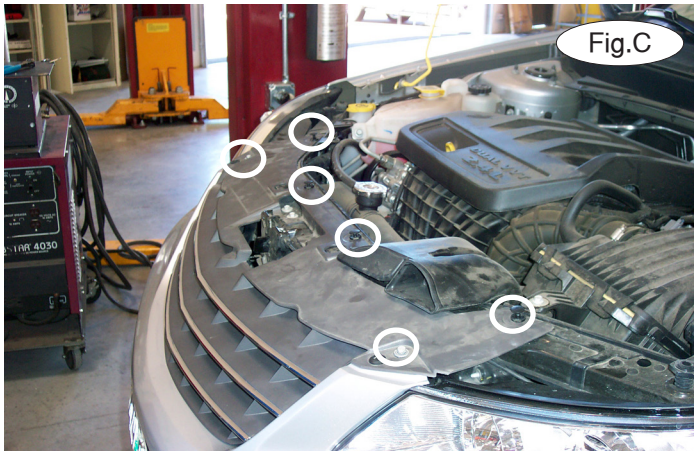


# BASEPLATE KIT INSTALLATION INSTRUCTIONS

**KIT# 287-1**

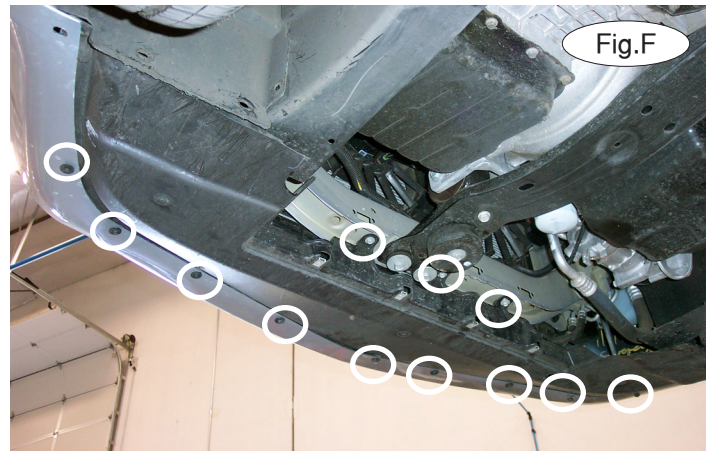
04/26/13  
KS

ROADMASTER, Inc. 6110 NE 127th Ave. Vancouver, WA 98682 360-896-0407 fax 360-735-9300 www.roadmasterinc.com



1. **Important:** please use all supplied bolts and parts and read all instructions carefully before beginning this installation. The majority of questions you may have can be answered within the text, and proper installation will ensure safe and secure travel. Now, begin the installation by removing four plastic fasteners and two 10mm (head) bolts attaching the top of the fascia to core support (Fig.C).

2. On each side, remove three 7mm (head) screws attaching the fender liner to the fascia, and the fascia to the fender (Fig.D).



3. On each side, remove three plastic fasteners attaching the fender liner to the lower splash shield (Fig.E).

4. Remove nine 7mm (head) bolts and three 10mm (head) bolts attaching the splash shield to the frame support and fascia (Fig.F).

5. Pull out and forward on the corners of the fascia to remove it (Fig.G). Disconnect the fog lights, if the vehicle is so equipped.





# BASEPLATE KIT INSTALLATION INSTRUCTIONS

**KIT# 287-1**

04/26/13  
KS

ROADMASTER, Inc. 6110 NE 127th Ave. Vancouver, WA 98682 360-896-0407 fax 360-735-9300 www.roadmasterinc.com



6. On the passenger side, remove one plastic fastener attaching the wiring harness to the top side of the frame cross member (Fig.H). *Note:* it will not be replaced.

7. On each side, use a 1/2" drill bit to drill through the outside existing octagon-shaped hole and through the top of the frame support (Fig.I). *Note:* use care to avoid drilling through engine components.



8. On each side, use a 7/16" drill bit to drill out the two existing holes in the bottom of the bumper core and through the second layer of the bumper core (Fig.J).

9. Remove two plastic fasteners attaching the power steering cooler to the bumper core and one fastener attaching the ambient temperature sensor to the bumper core (Fig.K).

10. Starting on the driver's side, place a 1/2" lock washer over a 1/2" x 5" bolt for each of the two rear mounting points. Place the bolts through the rear mounting points of the main receiver brace and place a 1/4" x 3/4" pipe spacer and a 1/4" x 2" x 2" backing plate over the bolts (Fig.L).

*Note:* make certain that the oil cooler line is positioned between the rear supports of the main receiver brace and the vehicle. Otherwise, the line could be damaged by engine components or other obstructions.



Place a 1 1/2" x 3" nutted backing plate on the top side of the core support and bolt through the frame support and into the backing plate with the 5" bolts.

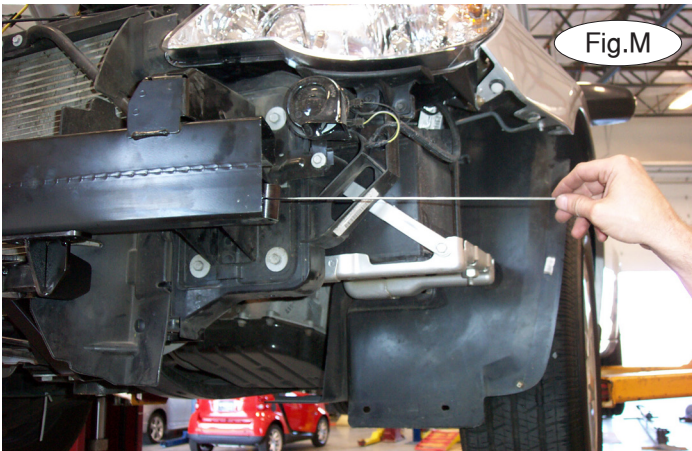


# BASEPLATE KIT INSTALLATION INSTRUCTIONS

**KIT# 287-1**

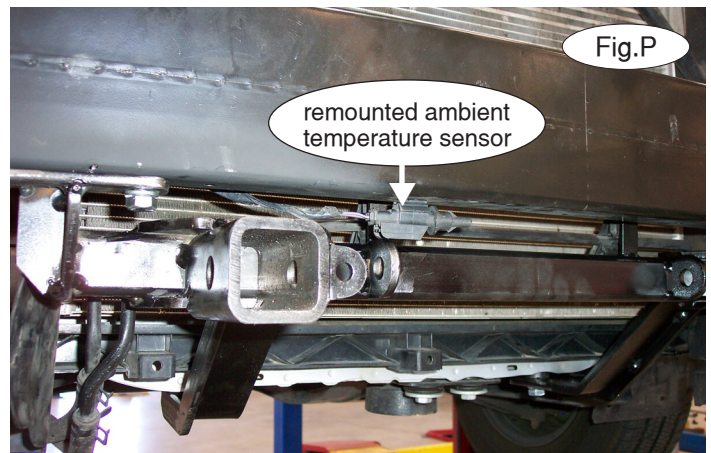
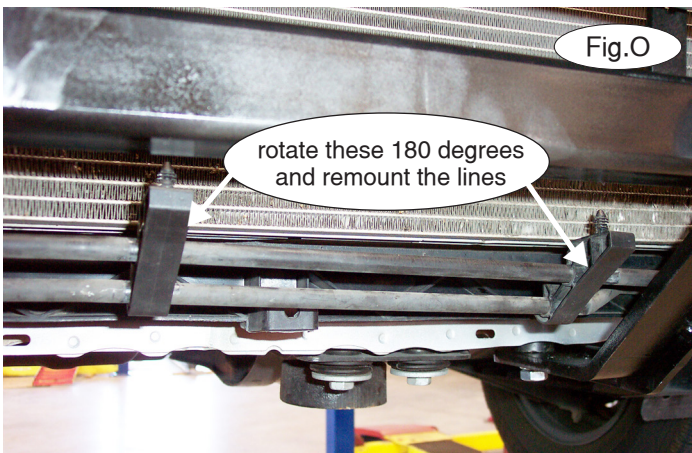
04/26/13  
KS

ROADMASTER, Inc. 6110 NE 127th Ave. Vancouver, WA 98682 360-896-0407 fax 360-735-9300 www.roadmasterinc.com



11. Place one of the 1¼" x 1-5/8" pipe spacers with wire extensions inside the lower opening in the end of the bumper core (Fig.M). Use a ½" lock washer and 7/16" x 3" bolt to bolt through the inside front mounting point, bumper core and pipe spacer. Place a ¼" x 1½" x 2" nuted backing plate in the opening at the back of the bumper core and bolt it into place (Fig.N). *Note:* make certain you begin with the innermost hole or you will be unable to bolt through the outside hole.

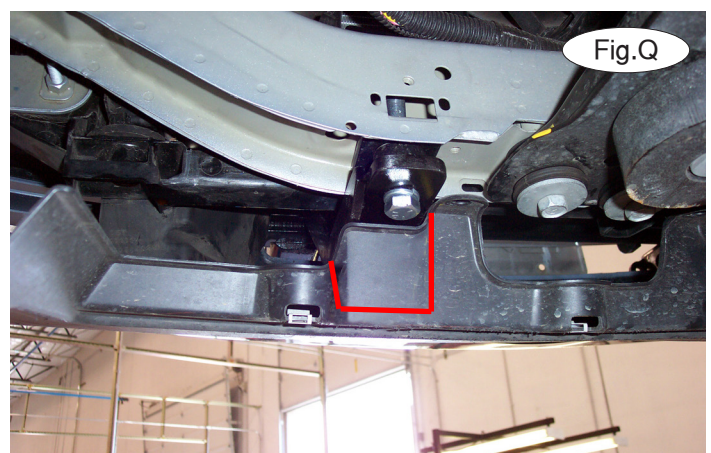
12. Repeat steps 10 and 11 for the passenger side. Torque all bolts to the bolt torque requirements found at the end of this document.



13. Remove the two plastic fasteners on the oil cooler, turn them 180 degrees, and remount them using the metal tabs located on the top cross bar of the main receiver brace (Fig.O).

14. Remount the ambient temperature sensor by routing it through the center opening of the bumper core and around the bumper core support. Fasten it using the holes in the bottom of the bumper core (Fig.P).

15. On each side, trim the splash shield to allow for clearance of the main receiver brace. Use the red lines in Figure Q (driver's side) as a guide for trimming.





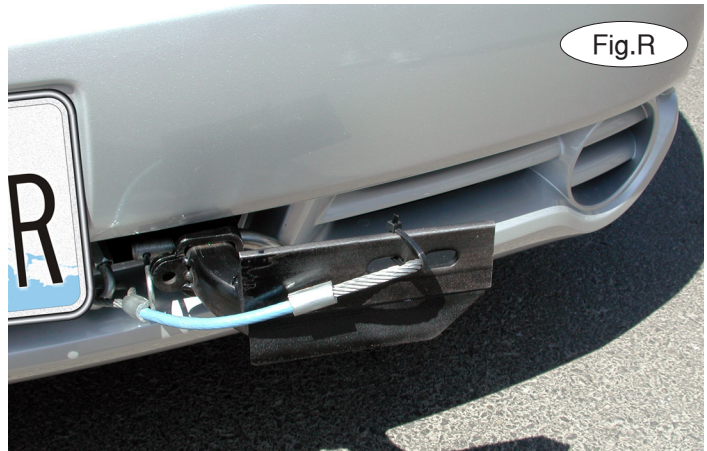
# BASEPLATE KIT INSTALLATION INSTRUCTIONS

**KIT# 287-1**

04/26/13  
KS

ROADMASTER, Inc. 6110 NE 127th Ave. Vancouver, WA 98682 360-896-0407 fax 360-735-9300 www.roadmasterinc.com

16. Reassemble the fascia, reversing steps 1 through 5.
17. Insert the removable front bracket arms into the front receiver braces, and secure them in place with the supplied 5/8" draw pins and spring pins.
18. Attach the 12" safety cables with the cable connectors (Q-Links) to the front of the receiver braces (Fig.R).
19. Attach the ends of the safety cables to the tow vehicle's safety cables.
20. Install the tow bar to the mounting bracket according to the manufacturer's instructions.



## BOLT TORQUE REQUIREMENTS

Note: The torque values represented below are intended as general guidelines. Torque requirements for specific applications may vary. Roadmaster does not warrant this information to be accurate for all applications and disclaims all liability for any claims or damages which may result from its use.

### STANDARD BOLTS

Thread Size	Grade	Torque
5/16.....	5.....	13 ft./lb.
3/8.....	5.....	23 ft./lb.
7/16.....	5.....	37 ft./lb.
1/2.....	5.....	56 ft./lb.
5/8.....	5.....	150 ft./lb.

### METRIC BOLTS

Thread Size	Grade	Plated / Unplated
8mm-1.0 .....	8.8 .....	20 ft./lb. 18 ft./lb.
8mm-1.25 .....	8.8 .....	19 ft./lb. 18 ft./lb.
10mm-1.25 .....	8.8 .....	38 ft./lb. 36 ft./lb.
10mm-1.5 .....	8.8 .....	37 ft./lb. 35 ft./lb.

### METRIC BOLTS

Thread Size	Grade	Plated / Unplated
12mm-1.25 .....	8.8 .....	70 ft./lb. 65 ft./lb.
12mm-1.5 .....	8.8 .....	66 ft./lb. 61 ft./lb.
12mm-1.75 .....	8.8 .....	65 ft./lb. 60 ft./lb.
14mm-2.0 .....	8.8 .....	104 ft./lb. 97 ft./lb.

All illustrations and specifications contained herein are based on the latest information available at the time of publication approval. ROADMASTER, INC. reserves the right to make changes at any time without notice in material, specification and models or to discontinue models.