



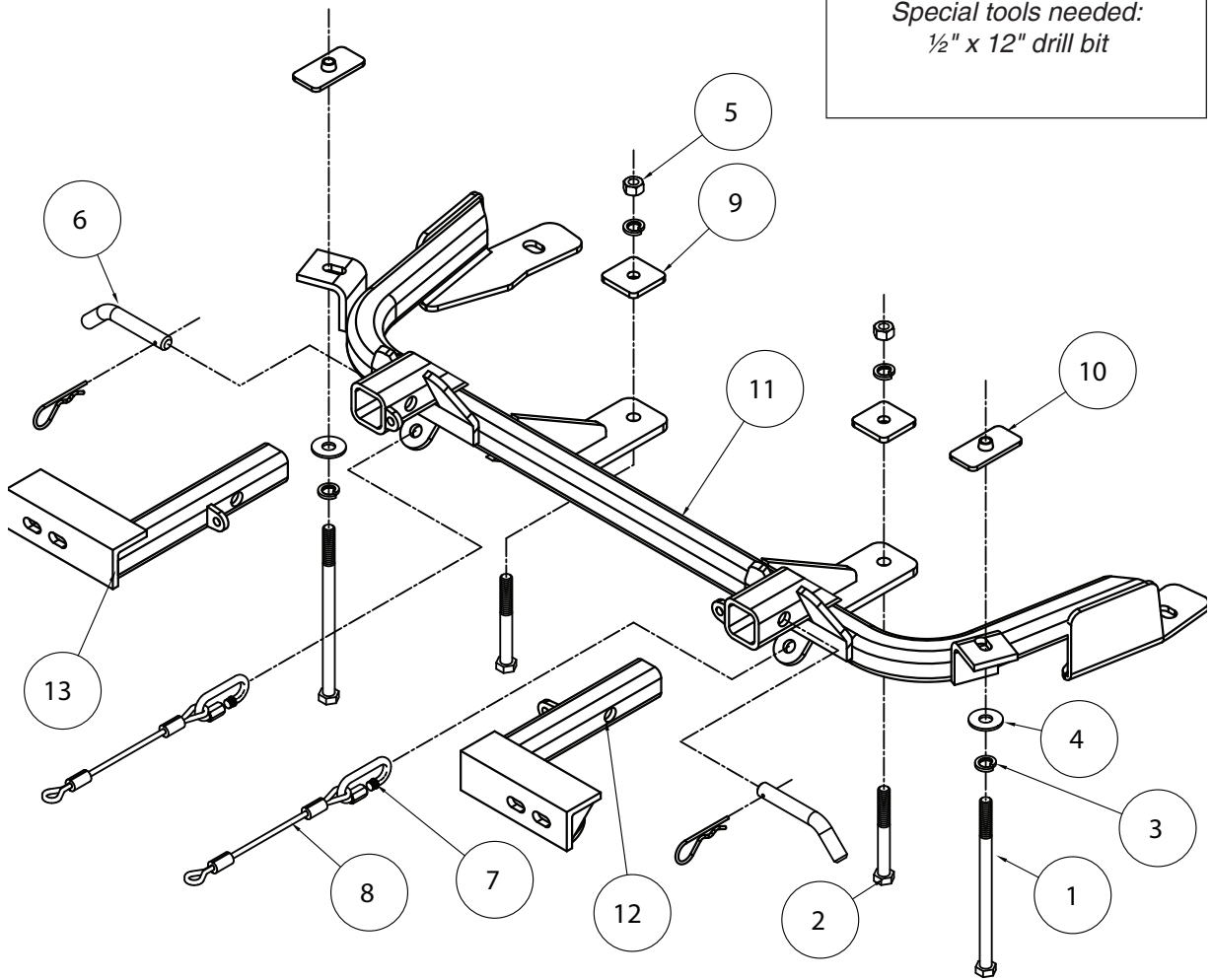
BASEPLATE KIT INSTALLATION INSTRUCTIONS

KIT# 3111-1

05/18/11
KS

ROADMASTER, Inc. 6110 NE 127th Ave. Vancouver, WA 98682 360-896-0407 fax 360-735-9300 www.roadmasterinc.com

Special tools needed:
1/2" x 12" drill bit



ITEM	QTY	NAME	MATERIAL
1.....	2	1/2" x 8 1/2" BOLT.....	350114-00
2.....	2	1/2" x 4" BOLT.....	350105-00
3.....	4	1/2" LOCK WASHER	350309-00
4.....	2	1/2" FLAT WASHER.....	350308-00
5.....	4	1/2" NUT	350258-00
6.....	2	5/8" DRAW PIN W/ SPRING PIN.....	357035-00
7.....	2	QUICK LINK.....	200008-00
8.....	2	8" SAFETY CABLES.....	650646-08
9.....	2	3/16" x 2" x 2" BACKING PLATE	A-001066
10.....	2	3/16" x 1 1/2" x 3" THREADED BACKING PLATE	C-003079
11.....	1	MAIN RECEIVER.....	C-000410
12.....	1	DRIVER SIDE ARM	C-000411
13.....	1	PASSENGER SIDE ARM	C-000412



BASEPLATE KIT INSTALLATION INSTRUCTIONS

KIT# 3111-1

05/18/11
KS

ROADMASTER, Inc. 6110 NE 127th Ave. Vancouver, WA 98682 360-896-0407 fax 360-735-9300 www.roadmasterinc.com

This is one of our XL series brackets, which allows the visible front portion of the bracket (Fig.A) to be easily removed from the front of the vehicle. The bracket kit consists of a main receiver brace, two removable front bracket arms and a hardware pack. The main receiver brace mounts to the bumper core and the removable front brackets install in the main receiver brace.

Before starting the installation, lay out the kit components in order, as they will be used. This will give you a visual idea of how the components work, and will also confirm that everything is present and accounted for.



IMPORTANT: All baseplates *must* be assembled with all the bolts left loose for final adjustment and positioning (before tightening) unless otherwise instructed. All bolts *must* be torqued for proper strength. If more than one bolt is used per fastening point, the diagram may only show one. Use flat washers over all slotted holes and lock washers on all fasteners.

WARNING

Failure to heed these warnings or follow the installation instructions may result in a voided warranty, loss of towed vehicle, personal injury or death.

- Do not weld or modify this baseplate or its components. Welding or modification will void the warranty.
- Do not use this document as a basis to design/fabricate a baseplate, as it may not show all parts or structural components.
- We strongly recommend professional installation.
- If the towed vehicle has been in an accident, it must be properly repaired before attaching the baseplate. Do not install the baseplate if any structural frame damage is found.
- The installer must use all bolts and parts supplied. If running changes were made by the vehicle manufacturer after this kit was designed, some bolts or other fasteners may no longer be the correct size. It is the installer's responsibility to verify this kit is securely fastened to the vehicle.
- Use Loctite® Red on all bolts used to secure this baseplate. Torque all bolts to the specifications found at the end of these instructions. Do not over-torque the bolts or failure may occur.
- The installer must inspect the baseplate to ensure adequate clearance, particularly around hoses, air conditioner lines, radiators, etc. or non-warranty failure may result.
- Roadmaster manufactures many styles of baseplates. If your baseplate has removable arms, they must be removed before driving the vehicle, unless the arms can be pinned or padlocked in place. If not secured, the arms could vibrate out.
- Some motorhome chassis have such a tight turning radius that you can damage your motorhome, towed vehicle, tow bar or baseplate while turning sharply. Before getting on the road, test your turning radius in an empty parking lot. Turning too sharply could result in non-warranty damage to your towing system, motorhome and/or towed vehicle.
- Do not back up with the towed vehicle attached or non-warranty damage will occur to your towing system or vehicles.
- The safety cables must connect the towing vehicle to the towed vehicle frame to frame, with the cables crossed, with enough slack for sharp turns. See cable instructions for proper routing. Failure to do so will result in non-warranty damage and/or the loss of the towed vehicle.
- This kit is designed for use with ROADMASTER tow bars and ROADMASTER adapters only. Using this kit with other brands, without an approved ROADMASTER adapter, may result in non-warranty damage or injury.
- Receiver extensions and out-of-level towing situations of 3 inches or more. This can cause the system to swing much higher and lower, causing excessive strain on the tow bar, baseplate and frame. That can cause the towing system to fail, causing property damage, personal injury or even death. If you must use a receiver extension or drop hitch to tow, it will reduce your receiver's weight capacity by 1/3 to avoid damaging your system. Never use more than one extension and/or drop hitch, as this will void your warranty.
- Every 3,000 miles, the owner must inspect all mounting points for cracks or fatigue, and check the fasteners for proper torque, according to the bolt torque requirements chart on the last page of these instructions.
- The owner must follow the vehicle manufacturer's instructions to prepare the vehicle for towing. Failure to do so may cause severe damage to the vehicle.
- This baseplate is only warranted for the original installation. Installing a used baseplate on another vehicle is not recommended and will void the warranty.

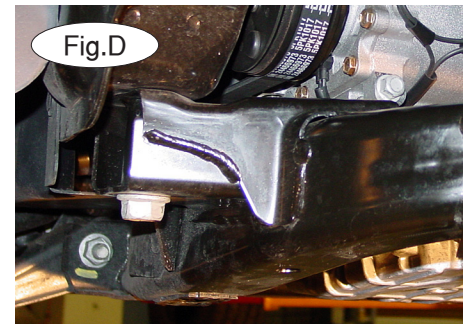
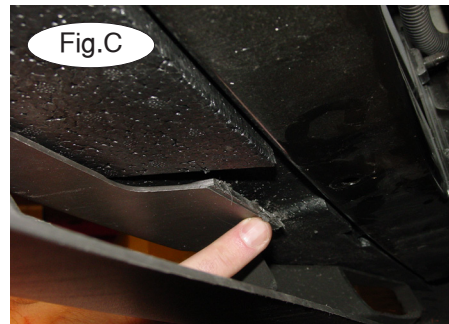
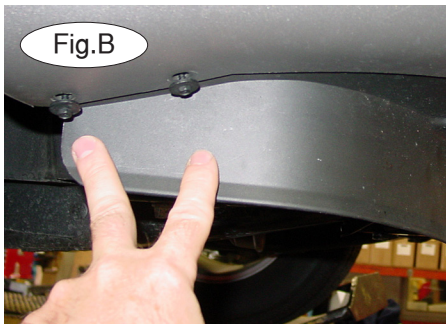


BASEPLATE KIT INSTALLATION INSTRUCTIONS

KIT# 3111-1

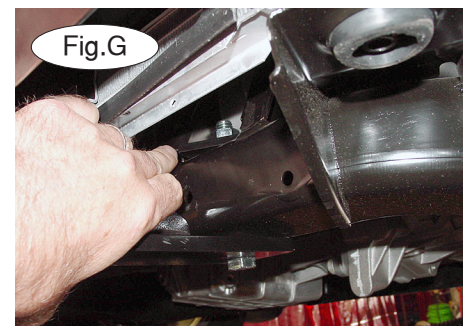
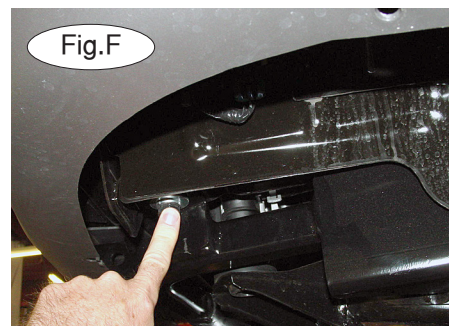
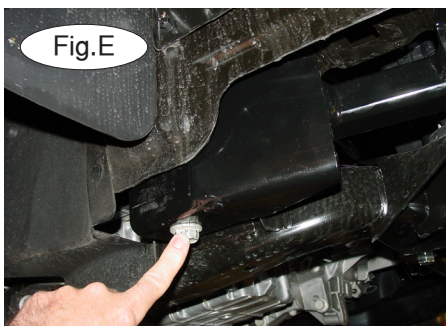
05/18/11
KS

ROADMASTER, Inc. 6110 NE 127th Ave. Vancouver, WA 98682 360-896-0407 fax 360-735-9300 www.roadmasterinc.com



1. **Important:** please use all supplied bolts and parts and read all instructions carefully before beginning this installation. The majority of questions you may have can be answered within the text, and proper installation will ensure safe and secure travel. Now, begin the installation by removing the front plastic air dam (six 6mm-head or 7mm-head screws, Fig.B).

2. Locate two, or possibly three, plastic fascia fasteners under the bumper core and remove them. The fascia tabs must also be cut off at a mold line approximately 2" in front of the fasteners (Fig.C).



3. Support the subframe (Fig.D) then remove the 18mm or 21mm (head) front subframe bolts located on each side (Fig.E).

4. Position the main receiver brace under the subframe core and over the subframe mounts. Bolt through the rear of the receiver brace with the subframe bolts. *Note:* use Loctite® Red on all bolts used for mounting this bracket. Torque to 104 ft/lbs. Support the front of the brace when tightening.

5. Remove the headlight assemblies according to the manufacturer's instructions. Generally, the headlight assembly is held in place with two fasteners and is released with a screwdriver inserted into the rearmost part of the headlight assembly support. *Note:* there is a wiring harness located on the top side of the frame rail that either must be removed or protected during drilling.

Working on one side at a time, locate the forward outside mounting point of the main receiver brace. Using the pre-existing hole in the main receiver brace as a template, enlarge the pre-existing hole in the bottom of the frame rail and then drill through the top side of the frame rail using a 1/2" x 12" drill bit.

Then, locate the lower inside mounting points on the main receiver brace. Using these holes as templates, enlarge the bottom hole of the subframe and drill through the top side of the subframe. *Note:* use caution to avoid drilling into engine components.

6. Place a 1/2" lock washer over one of the supplied 1/2" x 8 1/2" bolts. Place the bolt through the outside forward mounting point, main receiver brace bottom and top of frame rail. Bolt into a 3/16" x 1 1/2" x 3" threaded backing plate on the top side of the frame rail (Fig.F).



BASEPLATE KIT INSTALLATION INSTRUCTIONS

KIT# 3111-1

05/18/11
KS

ROADMASTER, Inc. 6110 NE 127th Ave. Vancouver, WA 98682 360-896-0407 fax 360-735-9300 www.roadmasterinc.com

7. Using one of the supplied 1/2" x 4" bolts, bolt through the center mounting point of the main receiver brace, bottom of the subframe and the top of the subframe. Place a 3/16" x 2" x 2" square backing plate over the bolt and finish with a lock washer and nut (Fig.G).
8. Repeat steps 5 through 7 for the opposite side of the vehicle.
9. Torque all mounting bolts to the specifications on the last page of these instructions.
10. Trim the plastic air dam to fit, if necessary. Reinstall the plastic air dam, reversing step 1.
11. Insert the front braces into the receiver tubes and secure them in place with the supplied 5/8" draw pins and spring pins.
12. Attach the 8" safety cables with the cable connectors (Q-links) to the front receiver braces.
13. Attach the ends of the safety cables to the tow vehicle's safety cables and tow bar.
14. Install the tow bar to the mounting bracket according to the manufacturer's instructions.

BOLT TORQUE REQUIREMENTS

Note: The torque values represented below are intended as general guidelines. Torque requirements for specific applications may vary. Roadmaster does not warrant this information to be accurate for all applications and disclaims all liability for any claims or damages which may result from its use.

STANDARD BOLTS

Thread Size	Grade	Torque
5/16.....	5.....	13 ft./lb.
3/8.....	5.....	23 ft./lb.
7/16.....	5.....	37 ft./lb.
1/2.....	5.....	56 ft./lb.
5/8.....	5.....	150 ft./lb.

METRIC BOLTS

Thread Size	Grade	Plated / Unplated
8mm-1.0	8.8	20 ft./lb. 18 ft./lb.
8mm-1.25	8.8	19 ft./lb. 18 ft./lb.
10mm-1.25	8.8	38 ft./lb. 36 ft./lb.
10mm-1.5	8.8	37 ft./lb. 35 ft./lb.

METRIC BOLTS

Thread Size	Grade	Plated / Unplated
12mm-1.25	8.8	70 ft./lb. 65 ft./lb.
12mm-1.5	8.8	66 ft./lb. 61 ft./lb.
12mm-1.75	8.8	65 ft./lb. 60 ft./lb.
14mm-2.0	8.8	104 ft./lb. 97 ft./lb.

All illustrations and specifications contained herein are based on the latest information available at the time of publication approval. ROADMASTER, INC. reserves the right to make changes at any time without notice in material, specification and models or to discontinue models.