



# BASEPLATE KIT INSTALLATION INSTRUCTIONS

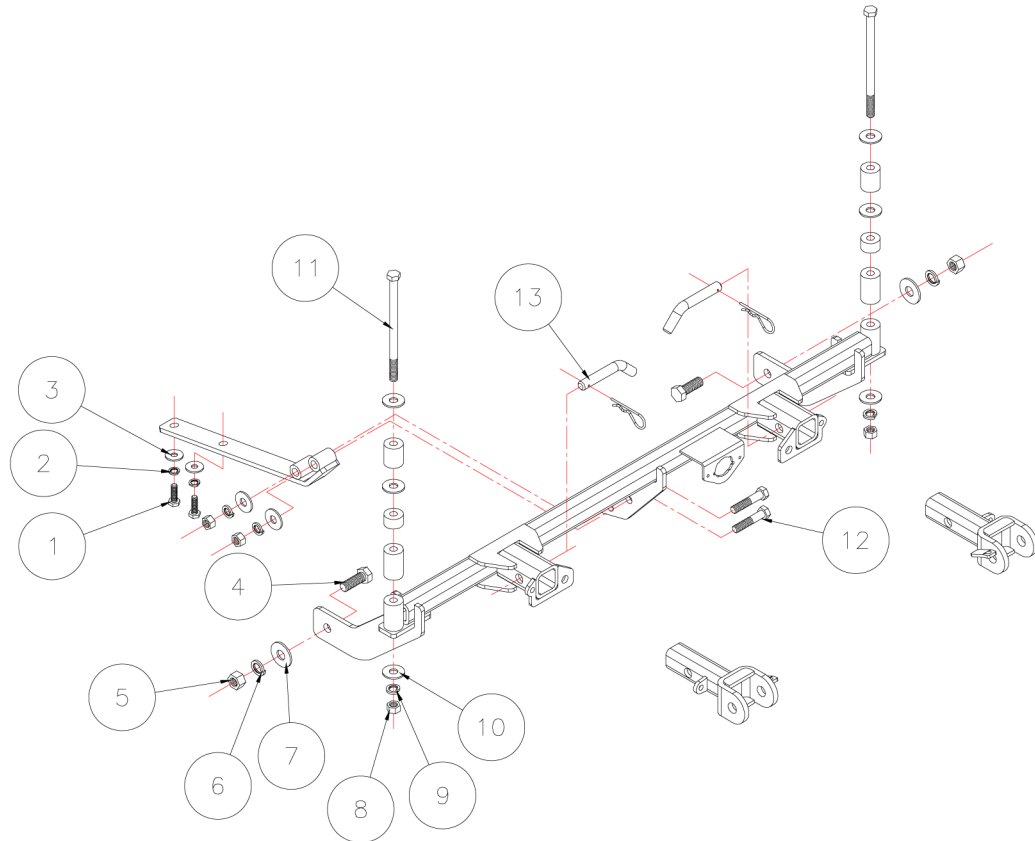
**KIT# 3113-3**

05/14/08  
KS

ROADMASTER, Inc. 6110 NE 127th Ave. Vancouver, WA 98682 360-896-0407 fax 360-735-9300 www.roadmasterinc.com

**Important**

Note: this bracket will not accommodate the Guardian rock shield, some models of the Tow Defender, Stowaway or the StowMaster and StowMaster All Terrain tow bars.



Item.....	Qty.....	Length.....	Width.....	Description.....	Part #
1.....	2.....	30mm.....	10mm.....	10mm x 1.25 x 30mm BOLT .....	356201-00
2.....	2.....	.....	10mm.....	10mm LOCK WASHER .....	355715-00
3.....	2.....	.....	10mm.....	10mm FENDER WASHER .....	355716-00
4.....	2.....	1 3/4".....	5/8".....	BOLT.....	350149-00
5.....	2.....	.....	5/8".....	NUT.....	350262-00
6.....	2.....	.....	5/8".....	LOCK WASHER .....	350313-00
7.....	2.....	.....	5/8".....	FLAT WASHER.....	350312-00
8.....	4.....	.....	1/2".....	NUT.....	350258-00
9.....	6.....	.....	1/2".....	LOCK WASHER .....	350309-00
10.....	10.....	.....	1/2".....	FLAT WASHER.....	350308-00
11.....	2.....	8".....	1/2".....	BOLT.....	350113-00
12.....	2.....	2 1/2".....	1/2".....	BOLT.....	350099-00
13.....	2.....	.....	.....	DRAW PIN / SPRING PIN .....	357035-00

ROADMASTER, INC.

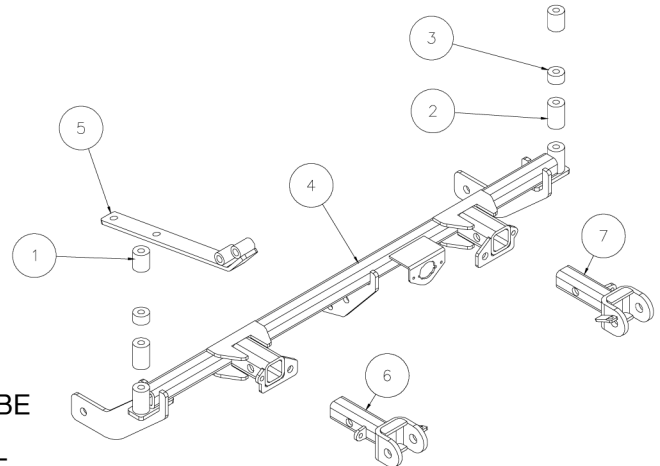


# BASEPLATE KIT INSTALLATION INSTRUCTIONS

**KIT# 3113-3**

05/14/08  
KS

ROADMASTER, Inc. 6110 NE 127th Ave. Vancouver, WA 98682 360-896-0407 fax 360-735-9300 www.roadmasterinc.com



Item	Qty.	Part #	Description
1.....	2 .....	A-000834	. 1 1/4" x 1 1/2" x .375 WALL TUBE
2.....	2 .....	A-000867	. 1 1/4" x 2" x .375 WALL TUBE
3.....	2 .....	A-000873	. 1 1/4" x 3/4" x .375 WALL TUBE
4.....	1 .....	C-000480	. MAIN BRACE WELDMENT
5.....	1 .....	C-000490	. CENTER BRACE WELDMENT
6.....	1 .....	C-001036	. PASSENGER SIDE ARM BRACE WELDMENT
7.....	1 .....	C-001037	. DRIVER SIDE ARM BRACE WELDMENT

**IMPORTANT:** All baseplates **must** be assembled with all the bolts left loose for final adjustment and positioning (before tightening) unless otherwise instructed. All bolts **must** be torqued for proper strength. If more than one bolt is used per fastening point, the diagram may only show one. Use flat washers over all slotted holes and lock washers on all fasteners.

## WARNING

Failure to heed these warnings or follow the installation instructions may result in a voided warranty, loss of towed vehicle, personal injury or death.

- Do not weld or modify this baseplate or its components. Welding or modification will void the warranty.
- Do not use this document as a basis to design/fabricate a baseplate, as it may not show all parts or structural components.
- We strongly recommend professional installation.
- If the towed vehicle has been in an accident, it must be properly repaired before attaching the baseplate. Do not install the baseplate if any structural frame damage is found.
- The installer must use all bolts and parts supplied. If running changes were made by the vehicle manufacturer after this kit was designed, some bolts or other fasteners may no longer be the correct size. It is the installer's responsibility to verify this kit is securely fastened to the vehicle.
- Use Loctite® Red on all bolts used to secure this baseplate. Torque all bolts to the specifications found at the end of these instructions. Do not over-torque the bolts or failure may occur.
- The installer must inspect the baseplate to ensure adequate clearance, particularly around hoses, air conditioner lines, radiators, etc. or non-warranty failure may result.
- Roadmaster manufactures many styles of baseplates. If your baseplate has removable arms, they must be removed before driving the vehicle, unless the arms can be pinned or padlocked in place. If not secured, the arms could vibrate out.
- Some motorhome chassis have such a tight turning radius that you can damage your motorhome, towed vehicle, tow bar or baseplate while turning sharply. Before getting on the road, test your turning radius in an empty parking lot. Turning too sharply could

result in non-warranty damage to your towing system, motorhome and/or towed vehicle.

- Do not back up with the towed vehicle attached or non-warranty damage will occur to your towing system or vehicles.
- The safety cables must connect the towing vehicle to the towed vehicle frame to frame, with the cables crossed, with enough slack for sharp turns. See cable instructions for proper routing. Failure to do so will result in non-warranty damage and/or the loss of the towed vehicle.
- This kit is designed for use with ROADMASTER tow bars and ROADMASTER adapters only. Using this kit with other brands, without an approved ROADMASTER adapter, may result in non-warranty damage or injury.
- Receiver extensions and out-of-level towing situations of 3 inches or more. This can cause the system to swing much higher and lower, causing excessive strain on the tow bar, baseplate and frame. That can cause the towing system to fail, causing property damage, personal injury or even death. If you must use a receiver extension or drop hitch to tow, it will reduce your receiver's weight capacity by 1/3 to avoid damaging your system. Never use more than one extension and/or drop hitch, as this will void your warranty.
- Every 3,000 miles, the owner must inspect all mounting points for cracks or fatigue, and check the fasteners for proper torque, according to the bolt torque requirements chart on the last page of these instructions.
- The owner must follow the vehicle manufacturer's instructions to prepare the vehicle for towing. Failure to do so may cause severe damage to the vehicle.
- This baseplate is only warranted for the original installation. Installing a used baseplate on another vehicle is not recommended and will void the warranty.



# BASEPLATE KIT INSTALLATION INSTRUCTIONS

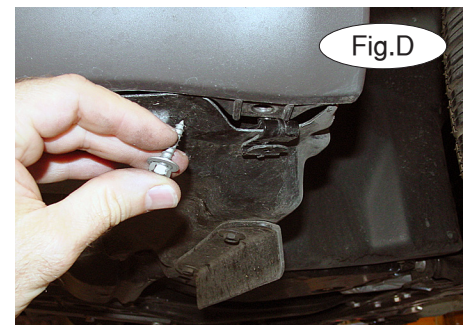
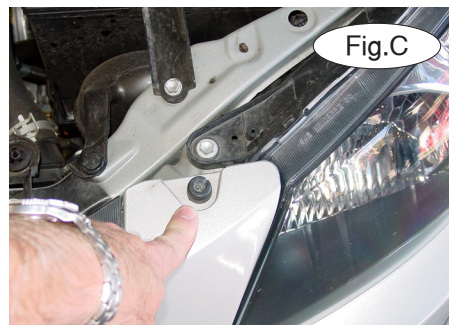
**KIT# 3113-3**

05/14/08  
KS

ROADMASTER, Inc. 6110 NE 127th Ave. Vancouver, WA 98682 360-896-0407 fax 360-735-9300 www.roadmasterinc.com

This bracket kit is one of our MX series, which allows the visible front portion of the brackets to be easily removed (Fig.A). The kit consists of the main receiver brace, front braces, backing plate weldments and a hardware pack. The main receiver brace mounts to the front frame and bumper core on each side. The front braces insert into the receivers on each side and are secured with draw pins.

Before starting the installation, lay out the kit components in order, as they will be used. This will give you a visual idea of how the components work, and will also confirm that everything is present and accounted for.

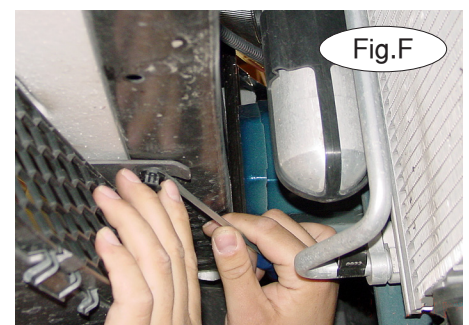


1. **Important:** please use all supplied bolts and parts and read all instructions carefully before beginning this installation. The majority of questions you may have can be answered within the text, and proper installation will ensure safe and secure travel. Now, begin the installation. Start by removing three center plastic fasteners in the top of the fascia between the headlights (Fig.B) and a rubber bumper screw beside each headlight (Fig.C).

2. Remove two more bottom screws from the fender well liners on each side then pull back to gain access to the fascia fender fasteners (Fig.D).

3. Pull the fender liner back and disconnect the fog light if present on each side.

4. Remove the fender fascia junction screws on each side (Fig.E) and two plastic fasteners under the bumper core (Fig.F).





# BASEPLATE KIT INSTALLATION INSTRUCTIONS

**KIT# 3113-3**

05/14/08  
KS

ROADMASTER, Inc. 6110 NE 127th Ave. Vancouver, WA 98682 360-896-0407 fax 360-735-9300 www.roadmasterinc.com

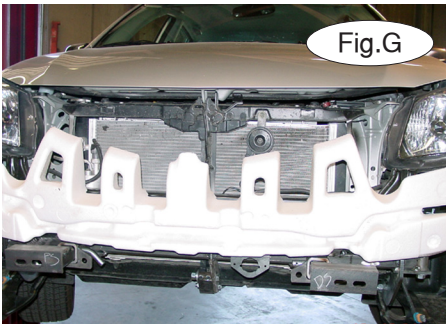


Fig.G

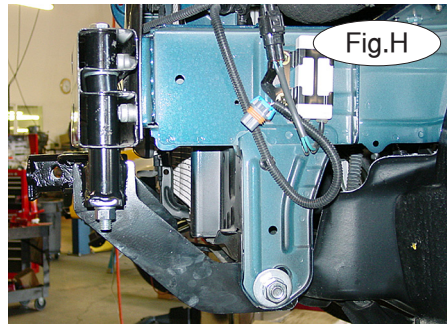


Fig.H

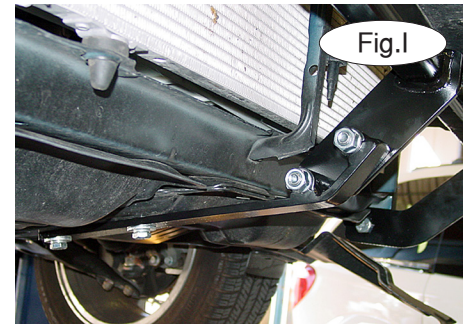


Fig.I

5. Pull the fascia forward to remove and set aside. Also, remove the Styrofoam energy absorber on the front of the bumper core (Fig.G).
6. Hold the main receiver brace below the bumper core with the side over the tie down plate mounting holes. Bolt in place with two 5/8" x 1 3/4" bolts through the tie down plates on each side.
7. Bolt through existing holes in the end of the bumper core with 1/2" x 8" bolts, 1 1/2", 3/4", 2" spacers, lock washers and nuts. The spacers go in the bumper core as shown, then the bolt goes through the assembly and the end mounts on the receiver brace (Fig.H).
8. Remove two bolts from the bottom of the motor mount and bolt through the lower center brace with two 10mm x 1.25 x 30mm bolts (Fig.I), then bolt the lower brace to the receiver brace with two 1/2" x 2 1/2" bolts, lock washers and nuts.
9. Align the receiver brace and tighten all mounting bolts to the torque specifications below.
10. Remove the small grille panels (Fig.J) and save for a later refit if the brace is removed.
11. Refit the fascia and the energy foam, reversing steps 1 through 5.
12. Torque all mounting bolts to the torque specifications below.
13. Install the front braces in the receiver tubes and pin from the top with 5/8" draw pins and spring pins.
14. Install the tow bar according to the manufacturer's instructions.
15. Attach the safety cables to the main receiver brace.

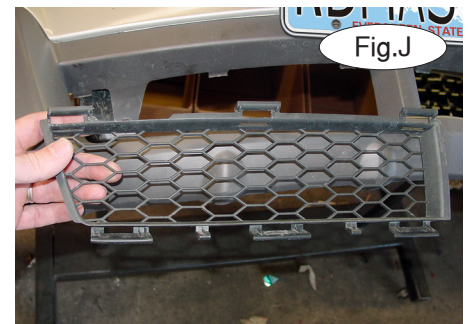


Fig.J

## BOLT TORQUE REQUIREMENTS

Note: The torque values represented below are intended as general guidelines. Torque requirements for specific applications may vary. Roadmaster does not warrant this information to be accurate for all applications and disclaims all liability for any claims or damages which may result from its use.

### STANDARD BOLTS

Thread Size	Grade	Torque
5/16.....	5.....	13 ft./lb.
3/8.....	5.....	23 ft./lb.
7/16.....	5.....	37 ft./lb.
1/2.....	5.....	56 ft./lb.
5/8.....	5.....	150 ft./lb.

### METRIC BOLTS

Thread Size	Grade	Plated / Unplated
8mm-1.0 .....	8.8 .....	20 ft./lb. 18 ft./lb.
8mm-1.25 .....	8.8 .....	19 ft./lb. 18 ft./lb.
10mm-1.25 .....	8.8 .....	38 ft./lb. 36 ft./lb.
10mm-1.5 .....	8.8 .....	37 ft./lb. 35 ft./lb.

### METRIC BOLTS

Thread Size	Grade	Plated / Unplated
12mm-1.25 .....	8.8 .....	70 ft./lb. 65 ft./lb.
12mm-1.5 .....	8.8 .....	66 ft./lb. 61 ft./lb.
12mm-1.75 .....	8.8 .....	65 ft./lb. 60 ft./lb.
14mm-2.0 .....	8.8 .....	104 ft./lb. 97 ft./lb.

All illustrations and specifications contained herein are based on the latest information available at the time of publication approval. ROADMASTER, INC. reserves the right to make changes at any time without notice in material, specification and models or to discontinue models.