

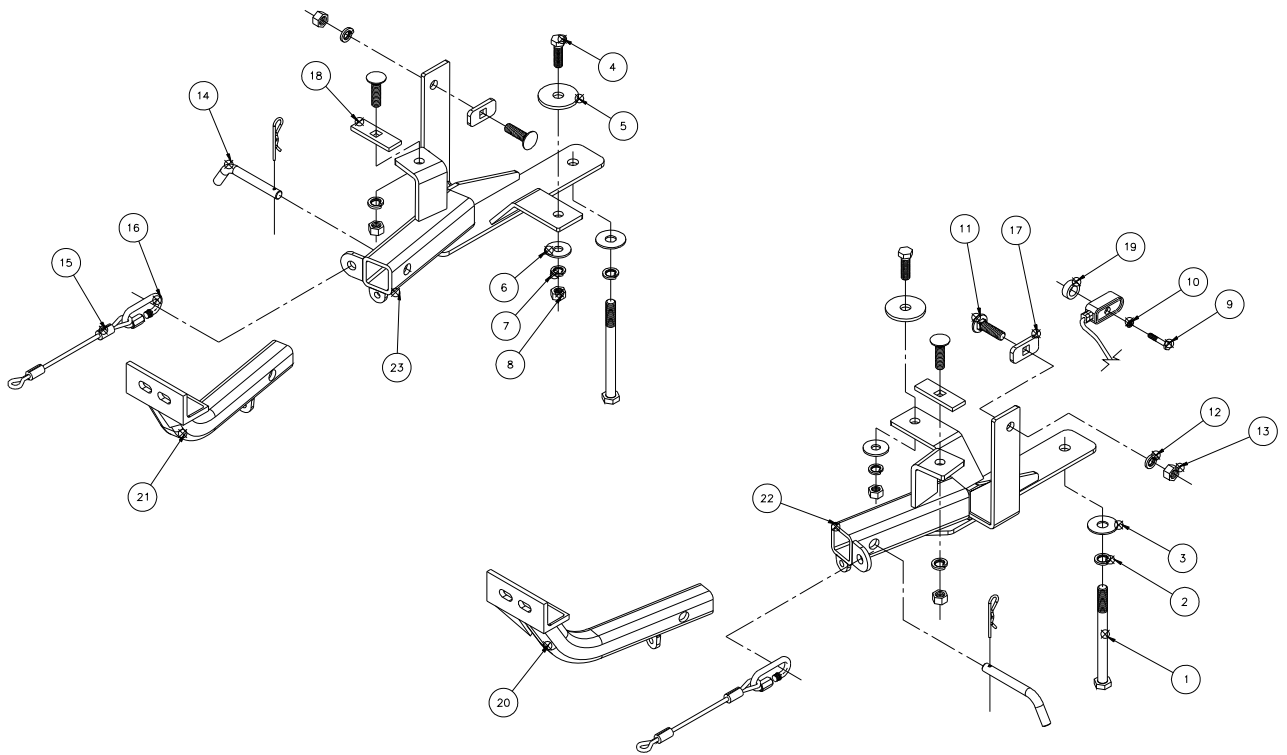


BASEPLATE KIT INSTALLATION INSTRUCTIONS

KIT# 3150-1

07/23/10
KS

ROADMASTER, Inc. 6110 NE 127th Ave. Vancouver, WA 98682 1-800-669-9690 fax 360-735-9300 www.roadmasterinc.com



ITEM	QTY	NAME	MATERIAL
1	2	14mm x 2.0 x 140mm BOLT	355910-00
2	2	14mm LOCK WASHER	355740-00
3	2	14mm FENDER WASHERS	355741-00
4	2	12mm x 1.75 x 40mm	357203-00
5	2	1/2" PLATE WASHER	A-003086
6	2	12mm FENDER WASHER	355720-10
7	2	12mm LOCK WASHER	355725-00
8	2	12mm x 1.75 HEX NUT	357212-00
9	1	6mm x 1.0 x 45mm	355897-00
10	1	6mm LOCKWASHER	355761-00
11	4	1/2" x 1 3/4" CARRIAGE BOLT	350363-00
12	4	1/2" LOCK WASHER	350309-00
13	4	1/2" HEX NUT	350258-00
14	2	DRAW PIN W/ CLIP	357035-00
15	2	10" SAFETY CABLE	500646-10
16	2	QUICK LINK	200008-10
17	2	1/4" x 1" x 2" BACKING PLATE	A-000040
18	2	1/4" x 1" x 3" BACKING PLATE	A-001483
19	1	1" PIPE SPACER	A-000187
20	1	DRIVER SIDE ARM WELDMENT	C-001504
21	1	PASSENGER SIDE ARM WELDMENT	C-001505
22	1	DRIVER SIDE RECEIVER WELDMENT	C-001506
23	1	PASSENGER SIDE RECEIVER WELDMENT	C-001507



BASEPLATE KIT INSTALLATION INSTRUCTIONS

KIT# 3150-1

07/23/10
KS

ROADMASTER, Inc. 6110 NE 127th Ave. Vancouver, WA 98682 1-800-669-9690 fax 360-735-9300 www.roadmasterinc.com

This is one of our XL series brackets, which allows the visible front portion of the bracket to be easily removed from the front of the vehicle (Fig.A and Fig.B). The bracket kit consists of a passenger and driver side main receiver brace, two removable front braces and a hardware pack. The main receiver braces mount to the sub frame and the frame rail; the removable front braces install in the main receiver braces.

Before starting the installation, lay out the kit components in order, as they will be used. This will give you a visual idea of how the components work, and will also confirm that everything is present and accounted for.



Fig.A



Fig.B

IMPORTANT: All baseplates **must** be assembled with all the bolts left loose for final adjustment and positioning (before tightening) unless otherwise instructed. All bolts **must** be torqued for proper strength. If more than one bolt is used per fastening point, the diagram may only show one. Use flat washers over all slotted holes and lock washers on all fasteners.

WARNING

Failure to heed these warnings or follow the installation instructions may result in a voided warranty, loss of towed vehicle, personal injury or death.

- Do not weld or modify this baseplate or its components. Welding or modification will void the warranty.
- Do not use this document as a basis to design/fabricate a baseplate, as it may not show all parts or structural components.
- We strongly recommend professional installation.
- If the towed vehicle has been in an accident, it must be properly repaired before attaching the baseplate. Do not install the baseplate if any structural frame damage is found.
- The installer must use all bolts and parts supplied. If running changes were made by the vehicle manufacturer after this kit was designed, some bolts or other fasteners may no longer be the correct size. It is the installer's responsibility to verify this kit is securely fastened to the vehicle.
- Use Loctite® Red on all bolts used to secure this baseplate. Torque all bolts to the specifications found at the end of these instructions. Do not over-torque the bolts or failure may occur.
- The installer must inspect the baseplate to ensure adequate clearance, particularly around hoses, air conditioner lines, radiators, etc. or non-warranty failure may result.
- Roadmaster manufactures many styles of baseplates. If your baseplate has removable arms, they must be removed before driving the vehicle, unless the arms can be pinned or padlocked in place. If not secured, the arms could vibrate out.
- Some motorhome chassis have such a tight turning radius that you can damage your motorhome, towed vehicle, tow bar or baseplate while turning sharply. Before getting on the road, test your turning radius in an empty parking lot. Turning too sharply could result in non-warranty damage to your towing system, motorhome and/or towed vehicle.
- Do not back up with the towed vehicle attached or non-warranty damage will occur to your towing system or vehicles.
- The safety cables must connect the towing vehicle to the towed vehicle frame to frame, with the cables crossed, with enough slack for sharp turns. See cable instructions for proper routing. Failure to do so will result in non-warranty damage and/or the loss of the towed vehicle.
- This kit is designed for use with ROADMASTER tow bars and ROADMASTER adapters only. Using this kit with other brands, without an approved ROADMASTER adapter, may result in non-warranty damage or injury.
- Receiver extensions and out-of-level towing situations of 3 inches or more. This can cause the system to swing much higher and lower, causing excessive strain on the tow bar, baseplate and frame. That can cause the towing system to fail, causing property damage, personal injury or even death. If you must use a receiver extension or drop hitch to tow, it will reduce your receiver's weight capacity by 1/3 to avoid damaging your system. Never use more than one extension and/or drop hitch, as this will void your warranty.
- Every 3,000 miles, the owner must inspect all mounting points for cracks or fatigue, and check the fasteners for proper torque, according to the bolt torque requirements chart on the last page of these instructions.
- The owner must follow the vehicle manufacturer's instructions to prepare the vehicle for towing. Failure to do so may cause severe damage to the vehicle.
- This baseplate is only warranted for the original installation. Installing a used baseplate on another vehicle is not recommended and will void the warranty.

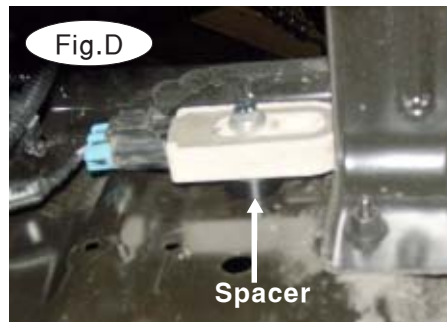


BASEPLATE KIT INSTALLATION INSTRUCTIONS

KIT# 3150-1

07/23/10
KS

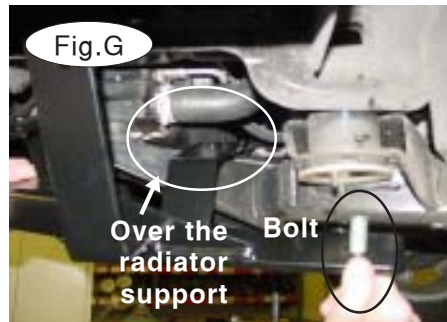
ROADMASTER, Inc. 6110 NE 127th Ave. Vancouver, WA 98682 1-800-669-9690 fax 360-735-9300 www.roadmasterinc.com



1. **Important:** please use all supplied bolts and parts and read all instructions carefully before beginning this installation. The majority of questions you may have can be answered within the text, and proper installation will ensure safe and secure travel. Now, begin the installation. Start by removing the 10mm bolt holding the ceramic heat sink to the outside of the driver's side frame rail (Fig.C).

2. Next, remove the washer from the 10mm bolt you removed in step 1. Place the washer over the supplied 6mm x 1.0 x 45mm bolt, then thread the bolt back through the heat sink. Before reattaching the heat sink, place the 1" x 3/8" spacer between the heat sink and the frame. Now, rotate the heat sink 90 degrees and bolt it back into place (Fig.D).

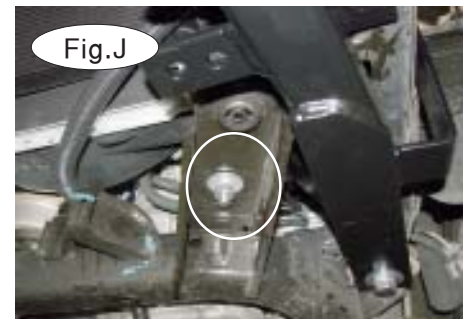
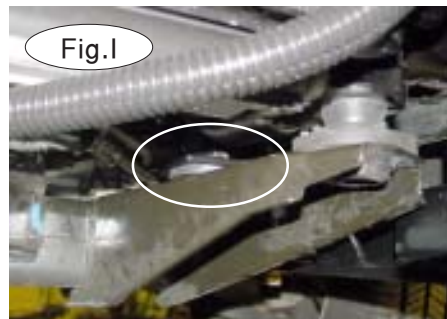
3. Support the sub frame (Fig.E). Starting with the driver side, remove the 17mm (head) subframe bolt (Fig.F).



4. Place the 14mm lock washer and flat washer over the 14mm x 2.0 x 140mm bolt. Place the bolt through the rear hole in the main receiver brace and bolt the main receiver brace into the hole for the sub frame bolt you removed in step 3 (Fig.G). *Note:* the inside support of the main receiver brace goes over the top of the radiator support.

5. Now, place the 1/2" plate washer between the radiator support and the inside support of the main receiver brace (Fig.H). Bolt through the inside support of the main receiver brace, plate washer and through the radiator support (Fig.I). Finish with a 12mm fender washer, lock washer and nut (Fig.J).

6. Repeat steps 3 through 5 for the passenger side.





BASEPLATE KIT INSTALLATION INSTRUCTIONS

KIT# 3150-1

07/23/10
KS

ROADMASTER, Inc. 6110 NE 127th Ave. Vancouver, WA 98682 1-800-669-9690 fax 360-735-9300 www.roadmasterinc.com

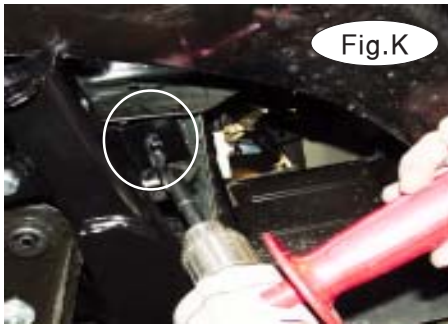


Fig.K



Fig.L



Fig.M

7. Now, tighten the bolts to the torque specifications listed at the end of these instructions.

8. Beginning with the driver side, use the front mounting point of the main receiver brace as a template to enlarge the existing hole in the frame (Fig.K) to 9/16".



Fig.N



Fig.O

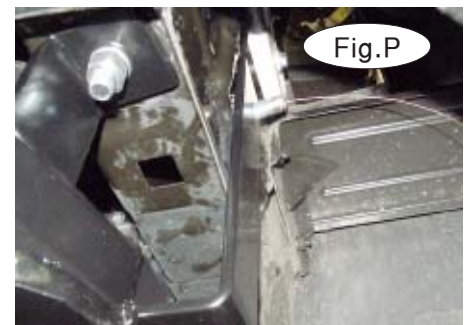


Fig.P

9. Next, fish wire the 1/2" x 1 3/4" carriage bolt and 1/4" x 1" x 3" backing plate through the square opening in the frame and through the main receiver brace (Fig.L). Bolt into place with a 1/2" lock washer and nut (Fig.M).

10. Now, tighten the bolts to the torque specifications listed at the end of these instructions.

11. Repeat steps 9 through 11 for the passenger side.

12. On the driver side, use the outer hole in the side of the main receiver brace as a template to enlarge the existing hole in the side of the frame (Fig.N). *Note:* use a 90 degree die grinder.

13. Fish wire the 1/2" x 3/4" carriage bolt and 1/4" x 1" x 2" backing plate through the square opening in the frame rail, the hole you enlarged in the side of the frame rail and the main receiver brace (Fig.O, P). Finish with a 1/2" lock washer and nut.

14. Repeat steps 13 and 14 for the passenger side.

15. Tighten all the remaining bolts to the torque specifications listed at the end of these instructions.

16. Fit the front bracket arms into the front receiver braces, and secure them in place with the supplied 5/8" draw pins and spring pins (Fig.S).

17. Attach the 10" safety cables with the cable connectors (Q-Links) to the front of the receiver braces (Fig.S).

18. Attach the ends of the safety cables to the tow vehicle's safety cables and tow bar.

19. Install the tow bar to the mounting bracket according to the manufacturer's instructions.



Fig.S



BASEPLATE KIT INSTALLATION INSTRUCTIONS

KIT# 3150-1

07/23/10
KS

ROADMASTER, Inc. 6110 NE 127th Ave. Vancouver, WA 98682 1-800-669-9690 fax 360-735-9300 www.roadmasterinc.com

BOLT TORQUE REQUIREMENTS

Note: The torque values represented below are intended as general guidelines. Torque requirements for specific applications may vary. Roadmaster does not warrant this information to be accurate for all applications and disclaims all liability for any claims or damages which may result from its use.

STANDARD BOLTS

Thread Size	Grade	Torque
5/16	5	13 ft./lb.
3/8	5	23 ft./lb.
7/16	5	37 ft./lb.
1/2	5	56 ft./lb.
5/8	5	150 ft./lb.

METRIC BOLTS

Thread Size	Grade	Plated / Unplated
8mm-1.0	8.8	20 ft./lb. 18 ft./lb.
8mm-1.25	8.8	19 ft./lb. 18 ft./lb.
10mm-1.25	8.8	38 ft./lb. 36 ft./lb.
10mm-1.5	8.8	37 ft./lb. 35 ft./lb.

METRIC BOLTS

Thread Size	Grade	Plated / Unplated
12mm-1.25	8.8	70 ft./lb. 65 ft./lb.
12mm-1.5	8.8	66 ft./lb. 61 ft./lb.
12mm-1.75	8.8	65 ft./lb. 60 ft./lb.
14mm-2.0	8.8	104 ft./lb. 97 ft./lb.

All illustrations and specifications contained herein are based on the latest information available at the time of publication approval. ROADMASTER, INC. reserves the right to make changes at any time without notice in material, specification and models or to discontinue models.