



Installation Instructions

Polyurethane Bushing Kit for Ford F-53

(replaces OEM bushings and clamps on 2" diameter OEM rear bar)
part #4139-219

INTRODUCTION

Thank you for purchasing this polyurethane bushing kit. This kit is designed to improve the handling characteristics of your Ford F-53 by reducing the body roll and balancing the weight transfer during cornering. The bushing kit is engineered for long life and trouble-free performance. For maximum suspension control, use this kit along with our auxiliary anti-sway bar kit.

All the hardware needed for installation is included in this kit. Refer to the PARTS LIST in these instructions to identify the parts.

SUGGESTED TOOLS

The following tools are suggested to complete the installation procedures:

- Metric wrenches
- Metric sockets
- Socket wrench
- Vise
- Cylinder smaller than 1-5/8" diameter (Step 3)
- Cylinder larger than 1-5/8" diameter (Step 4)

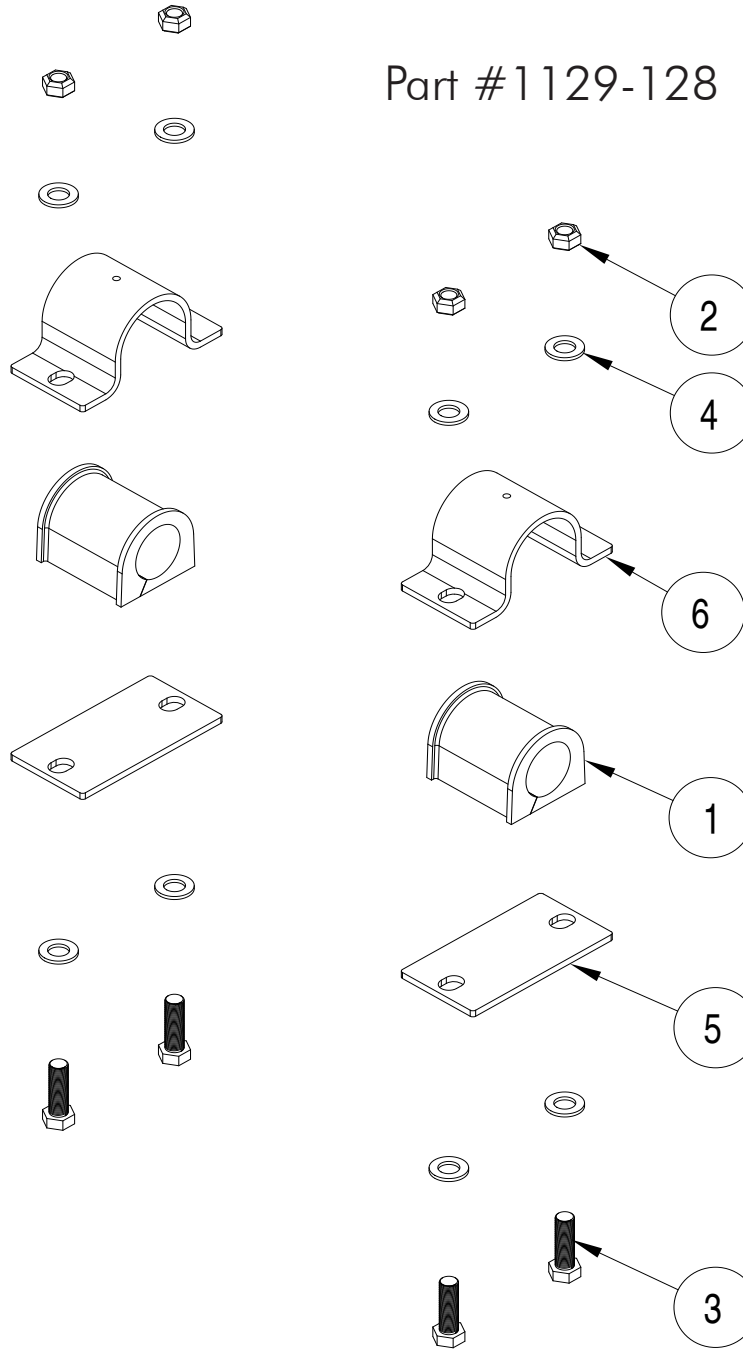
WARNING

Failure to follow these instructions can result in property damage, personal injury or even death.

- If raising the vehicle to install the anti-sway bar, always support the vehicle with jack stands at both frame rails or at the rear axle before working underneath. Ensure that the jack stands are securely positioned, and are rated at or above the weight of the vehicle.
- The installer must read the instructions and use all bolts and parts supplied. Use only the parts supplied by ROADMASTER to install this kit.
- Minor modifications are sometimes necessary due to slight vehicle variations, even for the same year, make and model.
- Regardless of year, make and model, a wide range of options for specific applications may or may not interfere with the installation. It is the installer's responsibility to make certain that equipment is not damaged once the suspension solution travels through the full range of motion. Failure to ensure adequate clearance could result in non-warranty property damage, personal injury or even death.
- If running changes were made by the manufacturer after this kit was designed, there may be weldments, braces, gussets, or other structural items which interfere with the installation. It is the installer's responsibility to allow for these running changes without sacrificing the structural integrity of the anti-sway bar. Failure to securely fasten the anti-sway bar could result in property damage, personal injury or even death.
- ROADMASTER will not be responsible for any damage or injury resulting from any modification or alteration.
- Check ALL the fasteners for tightness before and after road testing the vehicle.
- Do not use this document for custom fabrication, as it may not show all parts or structural components.
- Do not use an air impact wrench when re-installing bolts, as stripped threads may result.
- This anti-sway bar is only warranted for the original installation. Installing a used anti-sway bar on another vehicle is not recommended and will void the warranty.

PARTS LIST

Part #1129-128



ITEM	QTY	DESCRIPTION	PART NUMBER
1	2	BUSHING	205207-10
2	4	5/8-11 LOCK NUT	350280-00
3	4	5/8-11 x 2" BOLT - GRADE 8	350453-00
4	8	5/8 HARDENED WASHER	350731-00
5	2	PLATE	B1001
6	2	BUSHING CLAMP	B913
7	1	LOCTITE	200544-00
8	1	AQUALUBE	400011-30

INSTALLATION

The following instructions must be followed in the order listed to ensure a proper installation and to preserve the ROADMASTER warranty.

1. Ensure the motorhome is level and chocked.

Park the motorhome so that it is level, with the wheels straight and chocked. It may be useful to use ramps to add clearance.

2. Loosen one bushing clamp and remove the other.

Loosen the bolts on one bushing clamp only. Remove the bolts on the other bushing clamp and remove it.

3. Remove the OEM nuts on the axle bracket.

They are tacked to the axle bracket and must be removed.

Note: You can use a hammer and chisel to break them off.

4. Install one new bushing.

Working on one side at a time, lubricate the inside of one split bushing with the grease provided (Figure 1).

5. Install the support plate.

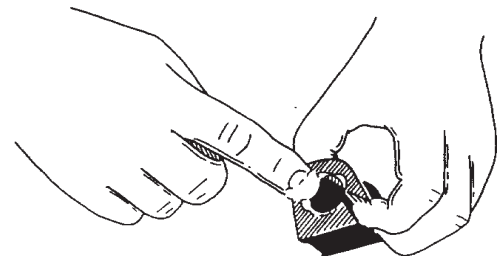
Install the clamp over the bushing and then place one of the support plates between the bushing clamp and the axle. Using the two supplied 5/8" bolts and 5/8" flat washers, bolt through the bushing clamp and through the support plate. Finish with 5/8" lock nuts but leave the assembly loose for now.

6. Repeat steps 4 and 5 for the other bushing.

Now, torque the bolts to 125 ft-lbs.

7. Road test the vehicle and adjust as needed.

Figure 1



CAUTION

Do not allow the anti-sway bar to hit the driveshaft, or it may damage the driveshaft. Damage to the driveshaft may result in unwanted vibration while driving the vehicle.