

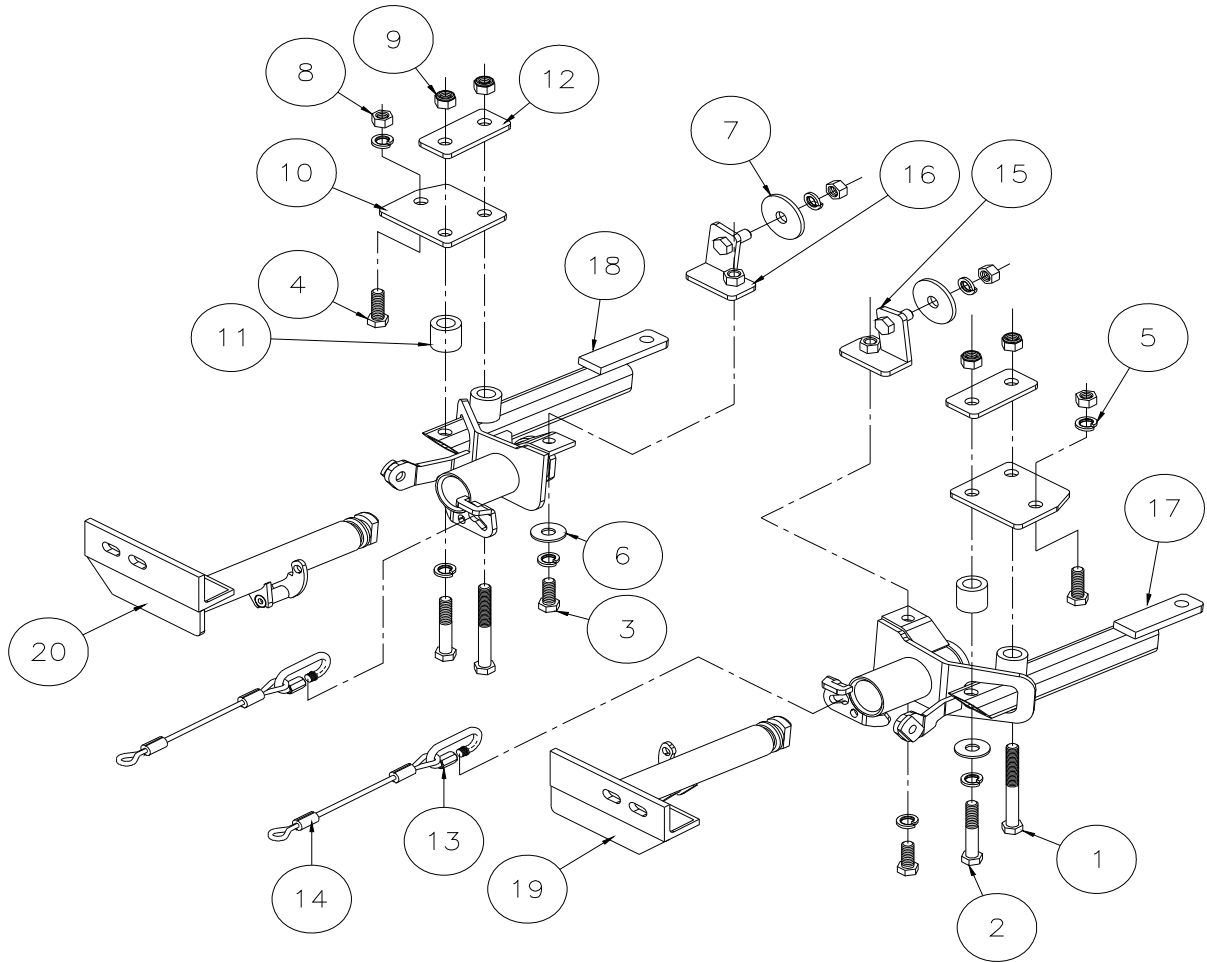


# BASEPLATE KIT INSTALLATION INSTRUCTIONS

**KIT# 521426-1**

05/18/11  
KS

ROADMASTER, Inc. 6110 NE 127th Ave. Vancouver, WA 98682 1-800-669-9690 fax 360-735-9300 www.roadmasterinc.com



ITEM	QTY	NAME	MATERIAL
1	2	1/2" x 4 1/2" BOLT	350106-00
2	2	1/2" x 3" BOLT	350101-00
3	2	1/2" x 1 1/4" BOLT	350094-00
4	2	1/2" x 1 1/2" BOLT	350095-00
5	8	1/2" LOCK WASHER	350309-00
6	2	1/2" FLAT WASHER	350308-00
7	2	3/16" PLATE WASHER	A-003086
8	4	1/2" HEX NUT	350258-00
9	4	1/2" NYLON LOCK NUT	350259-00
10	2	1/4" x 3 1/2" x 4" BACKING PLATE	A-000965
11	2	1 1/4" O.D. x 0.25 WALL x 1 1/4" PIPE SPACER	A-000964
12	2	1/4" x 1 3/4" x 3 3/4" BACKING PLATE	A-000966
13	2	QUICK LINK	200008-00
14	2	8" SAFETY CABLES	650646-08
15	1	DRIVER SIDE BUMPER BRACE	C-000208
16	1	PASSENGER SIDE BUMPER BRACE	C-000209
17	1	DRIVER SIDE RECEIVER	C-000794
18	1	PASSENGER SIDE RECEIVER	C-000795
19	1	DRIVER SIDE ARM	C-000796
20	1	PASSENGER SIDE ARM	C-000797
21	8	PLASTIC RIVET	350431-00



# BASEPLATE KIT INSTALLATION INSTRUCTIONS

**KIT# 521426-1**

05/18/11  
KS

ROADMASTER, Inc. 6110 NE 127th Ave. Vancouver, WA 98682 1-800-669-9690 fax 360-735-9300 www.roadmasterinc.com

This bracket kit is one of our EZ series, which is designed to be partly removable (Fig.A). The kit consists of the two main receiver braces, two front braces and a hardware pack. The main receiver brace mounts below the bumper core behind the front bumper fascia and through existing openings in the bumper fascia. The front brush guard, grille and bumper fascia have to be removed to install the receiver braces. Fascia fender rivets will have to be removed and replaced with new rivets included in the hardware kit. The front braces install in the receiver braces by inserting and twisting 90 degrees to lock. Start by laying the kit out according to the illustration. This will give you a visual idea of how the kit installs and also confirm that the kit components are present and accounted for.



**IMPORTANT:** All baseplates **must** be assembled with all the bolts left loose for final adjustment and positioning (before tightening) unless otherwise instructed. All bolts **must** be torqued for proper strength. If more than one bolt is used per fastening point, the diagram may only show one. Use flat washers over all slotted holes and lock washers on all fasteners.

## **WARNING**

Failure to heed these warnings or follow the installation instructions may result in a voided warranty, loss of towed vehicle, personal injury or death.

- Do not weld or modify this baseplate or its components. Welding or modification will void the warranty.
- Do not use this document as a basis to design/fabricate a baseplate, as it may not show all parts or structural components.
- We strongly recommend professional installation.
- If the towed vehicle has been in an accident, it must be properly repaired before attaching the baseplate. Do not install the baseplate if any structural frame damage is found.
- The installer must use all bolts and parts supplied. If running changes were made by the vehicle manufacturer after this kit was designed, some bolts or other fasteners may no longer be the correct size. It is the installer's responsibility to verify this kit is securely fastened to the vehicle.
- Use Loctite® Red on all bolts used to secure this baseplate. Torque all bolts to the specifications found at the end of these instructions. Do not over-torque the bolts or failure may occur.
- The installer must inspect the baseplate to ensure adequate clearance, particularly around hoses, air conditioner lines, radiators, etc. or non-warranty failure may result.
- Roadmaster manufactures many styles of baseplates. If your baseplate has removable arms, they must be removed before driving the vehicle, unless the arms can be pinned or padlocked in place. If not secured, the arms could vibrate out.
- Some motorhome chassis have such a tight turning radius that you can damage your motorhome, towed vehicle, tow bar or baseplate while turning sharply. Before getting on the road, test your turning radius in an empty parking lot. Turning too sharply could

result in non-warranty damage to your towing system, motorhome and/or towed vehicle.

- Do not back up with the towed vehicle attached or non-warranty damage will occur to your towing system or vehicles.
- The safety cables must connect the towing vehicle to the towed vehicle frame to frame, with the cables crossed, with enough slack for sharp turns. See cable instructions for proper routing. Failure to do so will result in non-warranty damage and/or the loss of the towed vehicle.
- This kit is designed for use with ROADMASTER tow bars and ROADMASTER adapters only. Using this kit with other brands, without an approved ROADMASTER adapter, may result in non-warranty damage or injury.
- Receiver extensions and out-of-level towing situations of 3 inches or more. This can cause the system to swing much higher and lower, causing excessive strain on the tow bar, baseplate and frame. That can cause the towing system to fail, causing property damage, personal injury or even death. If you must use a receiver extension or drop hitch to tow, it will reduce your receiver's weight capacity by 1/3 to avoid damaging your system. Never use more than one extension and/or drop hitch, as this will void your warranty.
- Every 3,000 miles, the owner must inspect all mounting points for cracks or fatigue, and check the fasteners for proper torque, according to the bolt torque requirements chart on the last page of these instructions.
- The owner must follow the vehicle manufacturer's instructions to prepare the vehicle for towing. Failure to do so may cause severe damage to the vehicle.
- This baseplate is only warranted for the original installation. Installing a used baseplate on another vehicle is not recommended and will void the warranty.



# BASEPLATE KIT INSTALLATION INSTRUCTIONS

**KIT# 521426-1**

05/18/11  
KS

ROADMASTER, Inc. 6110 NE 127th Ave. Vancouver, WA 98682 1-800-669-9690 fax 360-735-9300 www.roadmasterinc.com

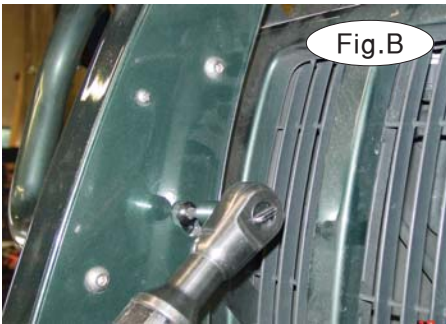


Fig.B



Fig.C

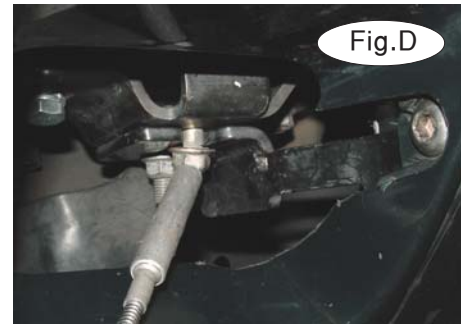


Fig.D

1. **Important:** please use all supplied bolts and parts and read all instructions carefully before beginning this installation. The majority of questions you may have can be answered within the text, and proper installation will ensure safe and secure travel. Now, begin the installation. Starting on the front brush guard, remove the 17/32" Allen head screws located midpoint on each side (Fig.B), then remove two more on the bottom of each side (Fig.C).



Fig.E



Fig.F



Fig.G

2. Now, remove four 15mm nuts on the bottom of the brush guard (Fig.D) and pull forward and down to remove it (Fig.E).

3. Go to the top of the vehicle between the headlights and remove four grill fasteners (\*20 torx)(Fig.F). Pull forward and down to remove the grill (Fig.G).



Fig.H



Fig.I

4. Remove four plastic fasteners in the top fascia grill opening (Fig.H), then one beside each head light (Fig.I).



Fig.J



Fig.K



Fig.L

5. Disconnect the wiring harness plug (Fig.J).

6. Go to the fender wells and drill four plastic rivets out on each side (Fig.K), then pull the fender loose (Fig.L).



# BASEPLATE KIT INSTALLATION INSTRUCTIONS

**KIT# 521426-1**

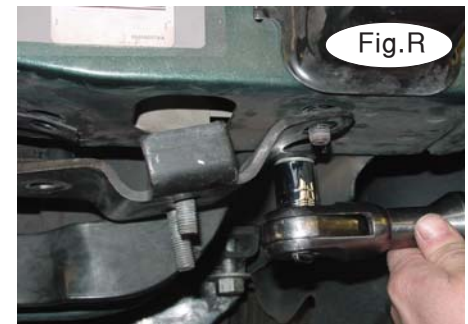
05/18/11  
KS

ROADMASTER, Inc. 6110 NE 127th Ave. Vancouver, WA 98682 1-800-669-9690 fax 360-735-9300 www.roadmasterinc.com



7. Remove four 10mm (head) bolts from the middle of the lower fascia (Fig.M).

8. Pull out on the fascia lip while simultaneously squeezing the side clips to release. Start with the bottom clip on each side (Fig.N,O) then go to the front and lift up to unhook the fascia, pull forward and off (Fig.P).



9. Remove the mounting brackets under the bumper core (one 16mm head bolt and two 15mm nuts) per bracket (Fig.Q,R,S). Some vehicles may have tow hooks, which will need to be removed (Fig.T).





# BASEPLATE KIT INSTALLATION INSTRUCTIONS

**KIT# 521426-1**

05/18/11  
KS

ROADMASTER, Inc. 6110 NE 127th Ave. Vancouver, WA 98682 1-800-669-9690 fax 360-735-9300 www.roadmasterinc.com

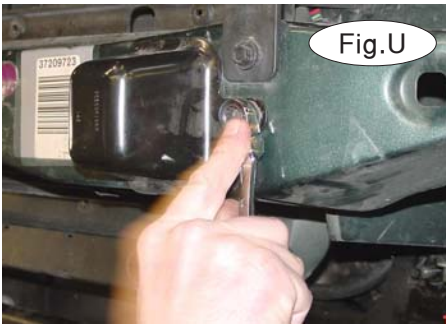


Fig.U



Fig.V

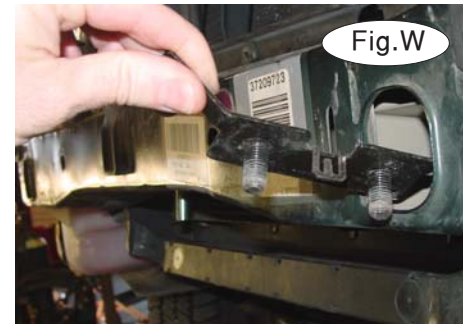


Fig.W

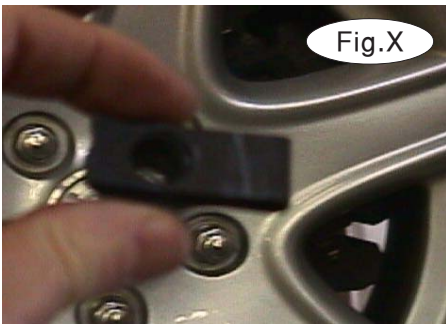


Fig.X

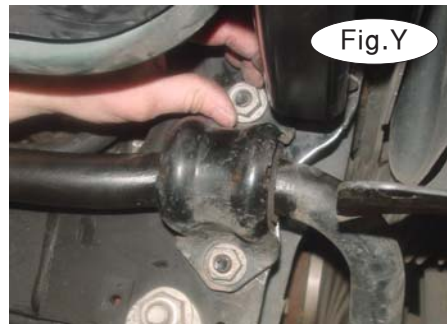


Fig.Y

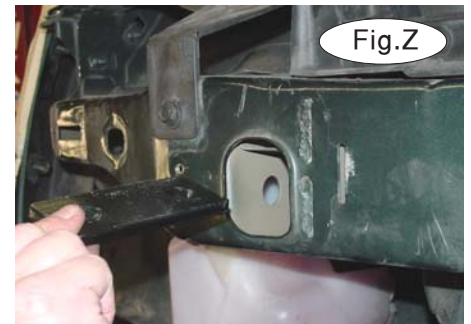


Fig.Z

10. Remove the two front bumper core covers (two 10mm head bolts)(Fig.U), then bend the holding tabs on the remaining brackets inside the frame on each side (Fig.V) and remove through the front of the bumper core (Fig.W). Then, remove the spring nut (Fig.X).

11. Enlarge the bracket mounting holes to 17/32" (two holes per side under the frame) (Fig.V). This will prepare the holes for 1/2" studs.

12. Remove four nuts (17mm or 18mm) holding the stabilizer bar to the bottom of the frame (two per side) then remove the stabilizer bar mounts and pull down on the stabilizer bar (Fig.Y).

13. Insert the two-hole backing plates in the frame on each side over the tow hook mounting holes (Fig.Z).

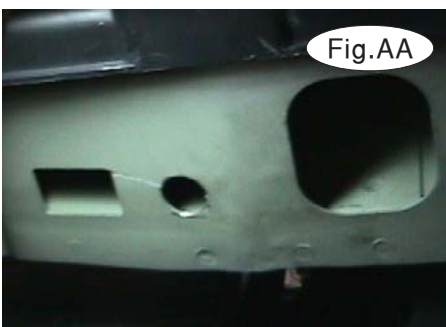


Fig.AA



Fig.BB



Fig.CC

14. Look under the bumper core and locate the large square holes in the bottom of the bumper core on each side (Fig.AA). Put the mounting backing plates through these holes on each side over the existing holes located approximately 1 1/2" inboard from the large access holes. Put the studs in the backing plates through existing holes in the back of the bumper core. *Note:* if they don't line up, you may have the driver's side in the passenger side. Try switching them around (Fig.BB). Bolt the backing plates to the rear of the bumper core into the upper braces with 1/2" nuts, plate washers and lock washers (Fig.CC). The bottom threaded hole in the backing plates should line up with the existing holes in the bottom of the bumper core at this time. *Note:* use Loctite® Red on all bolts used for mounting this bracket.



# BASEPLATE KIT INSTALLATION INSTRUCTIONS

**KIT# 521426-1**

05/18/11  
KS

ROADMASTER, Inc. 6110 NE 127th Ave. Vancouver, WA 98682 1-800-669-9690 fax 360-735-9300 www.roadmasterinc.com



Fig.DD

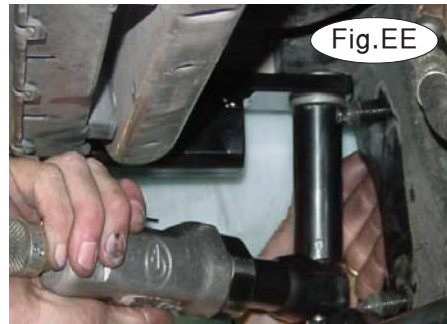


Fig.EE



Fig.FF

15. Remove the large subframe bolts (19mm or 21mm head) located above the sway bar mounting area (Fig.DD). Take the driver's receiver braces and bolt through the rear-mounting holes on each side with this bolt (Fig.EE, Fig.FF).



Fig.GG

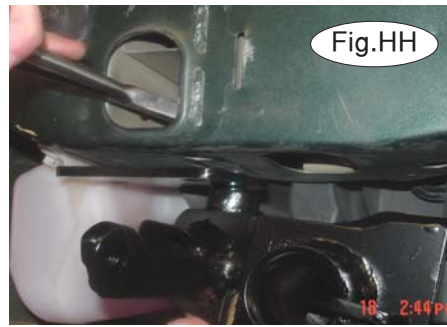


Fig.HH

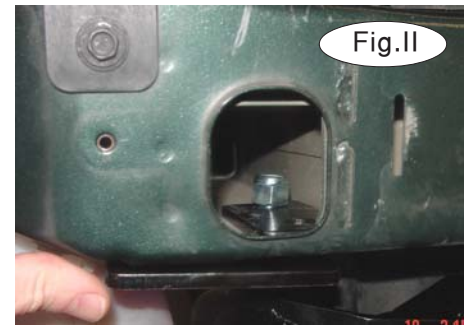


Fig.II

16. There are two holes located in the front outside of the receiver braces. Using one of the supplied  $\frac{1}{2}$ " x 4" bolts and nylock nuts, bolt through the second hole back in the driver side receiver brace, one of the supplied three-hole lower backing plates, the frame, and one of the supplied two-hole backing plates and  $1\frac{1}{4}$ " spacers (Fig.GG,HH,II).

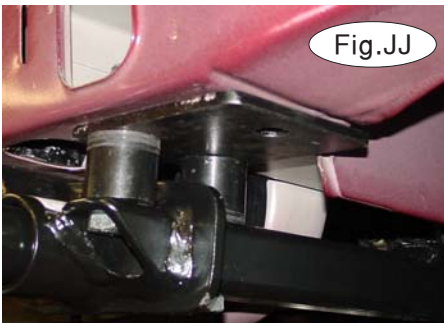


Fig.JJ

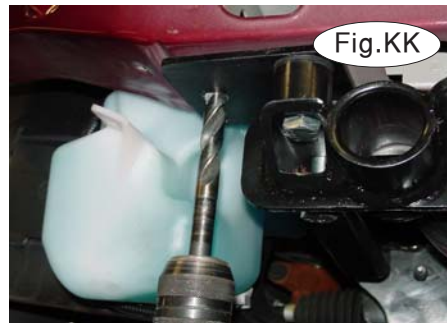


Fig.KK

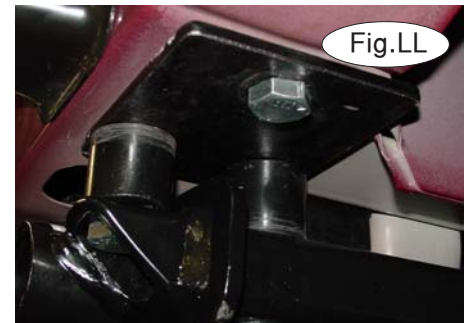


Fig.LL

17. Bolt through the front mounting hole in the receiver brace, three-hole backing plate, frame and two-hole backing plate and  $1\frac{1}{4}$ " spacer with a  $\frac{1}{2}$ " x 3" bolt, and Nylock nut (Fig.JJ).

18. Bolt through the inner receiver brace mounting holes under the bumper core into the backing plates installed in step 13, with a  $\frac{1}{2}$ " x  $1\frac{1}{4}$ ", lock washer and flat washer .

19. Torque all mounting bolts to the specifications found at the end of this document. Then, using the three-hole plates as drill templates on each side, drill a  $17/32$ " hole into the frame on each side (Fig.KK).

20. Bolt through these holes with  $\frac{1}{2}$ " x  $1\frac{1}{2}$ " bolts, lock washers and nuts (Fig.LL). *Note:* loosen the water bottle on the passenger side (two 10mm head bolts) to gain access to the rear of the frame then remount (Fig.KK).

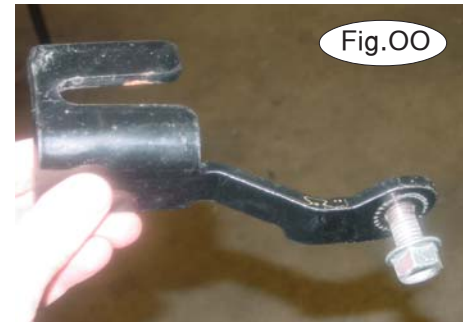
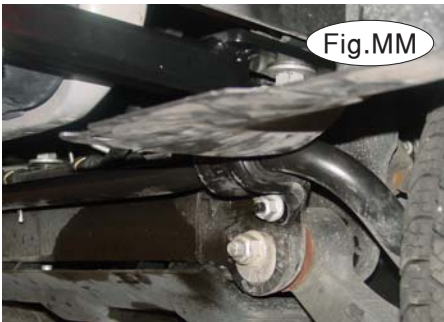


# BASEPLATE KIT INSTALLATION INSTRUCTIONS

**KIT# 521426-1**

05/18/11  
KS

ROADMASTER, Inc. 6110 NE 127th Ave. Vancouver, WA 98682 1-800-669-9690 fax 360-735-9300 www.roadmasterinc.com



21. Reinstall the sway bar, reversing step 3 (Fig.MM), then torque all mounting bolts to the torque specifications found at the end of these instructions. *Note:* don't forget to remount the windshield washer bottle.
22. Go to the fascia and remove the existing brush guard mounting brackets (one nut on each side) (Fig.NN,OO).



23. Now, trim the fascia openings on each side as shown (Fig.PP) then refit the fascia reversing steps 6 through 11 using the new rivets supplied in the hardware pack.
24. Reinstall the bumper fascia and grille, reversing steps 3 through 9 (Fig.QQ).
25. Lift the brush guard into position (Fig.RR), then bolt into the receiver braces with the original lower mounting bolts. For safety, use Lock tite on these bolts (Fig.SS). Replace the upper Allen head bolts removed in step 2 to finish installing the brush guard.
26. Put the safety cable connectors in the side of the receivers, then insert the front braces to rotate 90 degrees to lock in position (Fig.TT,UU).
27. Install the tow bar according to the manufacturer's instructions and torque all mounting bolts to the specifications below.
28. Attach one end of the 8" safety cables to the receiver braces with the included cable connectors (Fig.UU). Attach the other end of the cables to the tow vehicle's safety cables and the tow bar.



# BASEPLATE KIT INSTALLATION INSTRUCTIONS

**KIT# 521426-1**

05/18/11  
KS

ROADMASTER, Inc. 6110 NE 127th Ave. Vancouver, WA 98682 1-800-669-9690 fax 360-735-9300 www.roadmasterinc.com

## BOLT TORQUE REQUIREMENTS

Note: The torque values represented below are intended as general guidelines. Torque requirements for specific applications may vary. Roadmaster does not warrant this information to be accurate for all applications and disclaims all liability for any claims or damages which may result from its use.

### STANDARD BOLTS

Thread Size	Grade	Torque
5/16	5	13 ft./lb.
3/8	5	23 ft./lb.
7/16	5	37 ft./lb.
1/2	5	56 ft./lb.
5/8	5	150 ft./lb.

### METRIC BOLTS

Thread Size	Grade	Plated / Unplated
8mm-1.0	8.8	20 ft./lb. 18 ft./lb.
8mm-1.25	8.8	19 ft./lb. 18 ft./lb.
10mm-1.25	8.8	38 ft./lb. 36 ft./lb.
10mm-1.5	8.8	37 ft./lb. 35 ft./lb.

### METRIC BOLTS

Thread Size	Grade	Plated / Unplated
12mm-1.25	8.8	70 ft./lb. 65 ft./lb.
12mm-1.5	8.8	66 ft./lb. 61 ft./lb.
12mm-1.75	8.8	65 ft./lb. 60 ft./lb.
14mm-2.0	8.8	104 ft./lb. 97 ft./lb.

All illustrations and specifications contained herein are based on the latest information available at the time of publication approval. ROADMASTER, INC. reserves the right to make changes at any time without notice in material, specification and models or to discontinue models.