

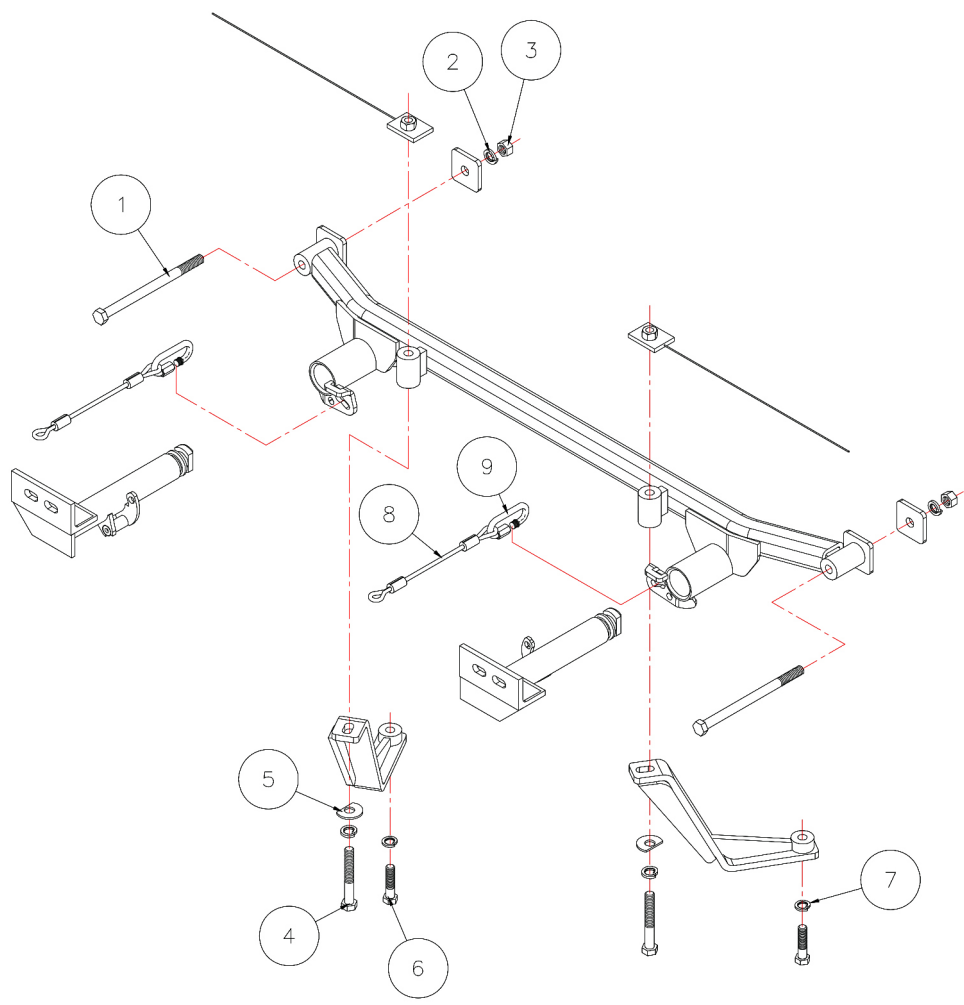


# BASEPLATE KIT INSTALLATION INSTRUCTIONS

**KIT# 521554-1**

03/11/16  
KS

ROADMASTER, Inc. 6110 NE 127th Ave. Vancouver, WA 98682 360-896-0407 fax 360-735-9300 www.roadmasterinc.com



Item	Qty.	Length	Width	Hardware	Part No.
1	2	7 1/2"	1/2"	BOLT	350112-00
2	4		1/2"	LOCK WASHER	350309-00
3	4		1/2"	NUT	350258-00
4	2	3 1/2"	1/2"	BOLT	350103-00
5	2		1/2"	CLIPPED FLAT WASHER	A-000893
6	2	50mm	12mm	12mm x 1.25 x 50mm BOLT	357005-00
7	2		12mm	12mm LOCK WASHER	355725-00
8	2	8"		8" SAFETY CABLE	500646-08
9	2			CABLE CONNECTOR	200008-00



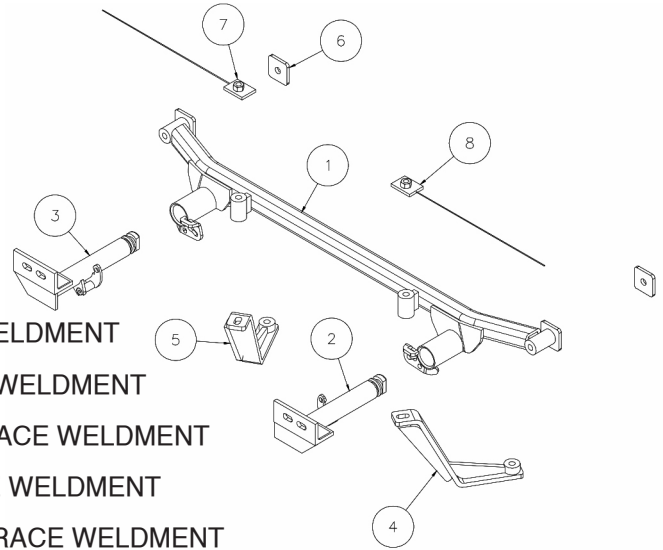
# BASEPLATE KIT INSTALLATION INSTRUCTIONS

**KIT# 521554-1**

03/11/16

KS

ROADMASTER, Inc. 6110 NE 127th Ave. Vancouver, WA 98682 360-896-0407 fax 360-735-9300 www.roadmasterinc.com



Item	Qty	Part No.	Assembly
1	1	C-000968	MAIN RECEIVER BRACE WELDMENT
2	1	C-000969	DRIVER SIDE ARM BRACE WELDMENT
3	1	C-000970	PASSENGER SIDE ARM BRACE WELDMENT
4	1	C-000971	DRIVER SIDE REAR BRACE WELDMENT
5	1	C-000972	PASSENGER SIDE REAR BRACE WELDMENT
6	2	A-001066	3/16" x 2" x 2" BACKING PLATE
7	1	C-000975	PASSENGER SIDE BACKING PLATE WELDMENT
8	1	C-000976	DRIVER SIDE BACKING PLATE WELDMENT

**IMPORTANT:** All baseplates **must** be assembled with all the bolts left loose for final adjustment and positioning (before tightening) unless otherwise instructed. All bolts **must** be torqued for proper strength. If more than one bolt is used per fastening point, the diagram may only show one. Use flat washers over all slotted holes and lock washers on all fasteners.

## WARNING

Failure to heed these warnings or follow the installation instructions may result in a voided warranty, loss of towed vehicle, personal injury or death.

- Do not weld or modify this baseplate or its components. Welding or modification will void the warranty.
- Do not use this document as a basis to design/fabricate a baseplate, as it may not show all parts or structural components.
- We strongly recommend professional installation.
- If the towed vehicle has been in an accident, it must be properly repaired before attaching the baseplate. Do not install the baseplate if any structural frame damage is found.
- The installer must use all bolts and parts supplied. If running changes were made by the vehicle manufacturer after this kit was designed, some bolts or other fasteners may no longer be the correct size. It is the installer's responsibility to verify this kit is securely fastened to the vehicle.
- Use Loctite® Red on all bolts used to secure this baseplate. Torque all bolts to the specifications found at the end of these instructions. Do not over-torque the bolts or failure may occur.
- The installer must inspect the baseplate to ensure adequate clearance, particularly around hoses, air conditioner lines, radiators, etc. or non-warranty failure may result.
- Roadmaster manufactures many styles of baseplates. If your baseplate has removable arms, they must be removed before driving the vehicle, unless the arms can be pinned or padlocked in place. If not secured, the arms could vibrate out.
- Some motorhome chassis have such a tight turning radius that you can damage your motorhome, towed vehicle, tow bar or baseplate while turning sharply. Before getting on the road, test your turning radius in an empty parking lot. Turning too sharply could

result in non-warranty damage to your towing system, motorhome and/or towed vehicle.

- Do not back up with the towed vehicle attached or non-warranty damage will occur to your towing system or vehicles.
- The safety cables must connect the towing vehicle to the towed vehicle frame to frame, with the cables crossed, with enough slack for sharp turns. See cable instructions for proper routing. Failure to do so will result in non-warranty damage and/or the loss of the towed vehicle.
- This kit is designed for use with ROADMASTER tow bars and ROADMASTER adapters only. Using this kit with other brands, without an approved ROADMASTER adapter, may result in non-warranty damage or injury.
- Receiver extensions and out-of-level towing situations of 3 inches or more. This can cause the system to swing much higher and lower, causing excessive strain on the tow bar, baseplate and frame. That can cause the towing system to fail, causing property damage, personal injury or even death. If you must use a receiver extension or drop hitch to tow, it will reduce your receiver's weight capacity by 1/3 to avoid damaging your system. Never use more than one extension and/or drop hitch, as this will void your warranty.
- Every 3,000 miles, the owner must inspect all mounting points for cracks or fatigue, and check the fasteners for proper torque, according to the bolt torque requirements chart on the last page of these instructions.
- The owner must follow the vehicle manufacturer's instructions to prepare the vehicle for towing. Failure to do so may cause severe damage to the vehicle.
- This baseplate is only warranted for the original installation. Installing a used baseplate on another vehicle is not recommended and will void the warranty.



# BASEPLATE KIT INSTALLATION INSTRUCTIONS

**KIT# 521554-1**

03/11/16

KS

ROADMASTER, Inc. 6110 NE 127th Ave. Vancouver, WA 98682 360-896-0407 fax 360-735-9300 www.roadmasterinc.com

This bracket kit is one of our EZ series, which is designed to be partly removable. The kit consists of the main receiver brace, two front arm braces, two lower braces and a hardware pack. The main receiver brace mounts behind the front bumper fascia to the bottom of the bumper core and the front of the frame on each side. The lower braces attach to the front of the radiator support and lower subframe mount on each side. The front arm braces insert into the receivers on each side and twist 90 degrees to lock in position (Fig.A). Start by laying the kit out according to the illustration. This will give you a visual idea of how the kit installs and also confirm that all the components are present and accounted for.



2. **Important:** please use all supplied bolts and parts and read all instructions carefully before beginning this installation. The majority of questions you may have can be answered within the text, and proper installation will ensure safe and secure travel. Now, begin the installation. Remove three plastic fasteners (Fig.B) holding the top black plastic grille cover on the top of the fascia, then remove one screw (Phillips) on each side (Fig.B) and set the cover aside (Fig.C).

3. Remove the battery cover on the driver's side by pulling up (Fig.D) then move to the passenger side and remove the side cover the same way (Fig.E). Remove the grille cover in the same manner and set aside (Fig.F).

4. Remove two more plastic fasteners from the top of the fascia (Fig.G).



5. Move to the fender wells and remove two plastic fasteners in each fender well (Fig.H).

6. Remove eleven 10mm plastic fasteners from the spoiler and bottom of the fascia (Fig.I,J).



# BASEPLATE KIT INSTALLATION INSTRUCTIONS

**KIT# 521554-1**

03/11/16  
KS

ROADMASTER, Inc. 6110 NE 127th Ave. Vancouver, WA 98682 360-896-0407 fax 360-735-9300 www.roadmasterinc.com



Fig.H



Fig.I

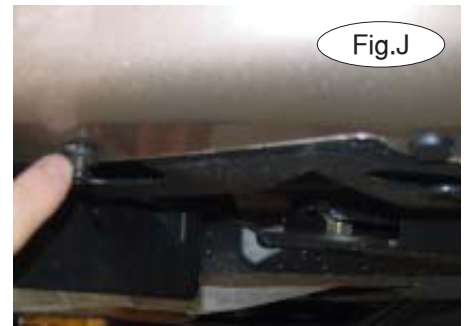


Fig.J



Fig.K



Fig.L



Fig.M

7. Remove six more plastic fasteners from the bottom splash panels (Fig.K).
8. Remove one Phillips screw on each fender fascia junction (Fig.L).
9. Pull the fascia out on each side (Fig.M) then pull forward, under the headlights, to release (Fig.N).



Fig.N



Fig.O



Fig.P

10. Go under the fascia and remove two final plastic fasteners under the grille area (Fig.O).
11. Pull forward to remove the fascia (Fig.P).

12. Remove the energy absorption plastic from the front of the bumper core (Fig.Q), then pull the ambient air sensor loose from the bottom of the bumper core (Fig.R).



Fig.Q

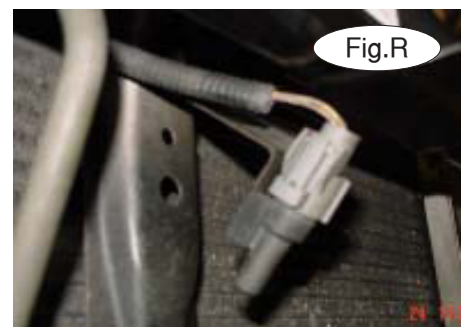


Fig.R



# BASEPLATE KIT INSTALLATION INSTRUCTIONS

**KIT# 521554-1**

03/11/16

KS

ROADMASTER, Inc. 6110 NE 127th Ave. Vancouver, WA 98682 360-896-0407 fax 360-735-9300 www.roadmasterinc.com



Fig.S



Fig.T



Fig.U

13. *Note:* on later models, you will need to remove two T30 Torx screws to temporarily remove the driver's side air bag sensor (Fig.S). This is done to gain access to the rear of the frame. DO NOT unplug the sensor.

14. Locate a large existing hole in the front of the frame on each side and drill straight through the center, through the back of the frame, on each side (Fig.T).

15. Using  $\frac{1}{2}$ " x  $7\frac{1}{2}$ " bolts,  $\frac{3}{16}$ " x 2" x 2" backing plates, lock washers and nuts, bolt through the main receiver brace and the frame on each side, using the backing plates behind the frame (Fig.U,V,W).

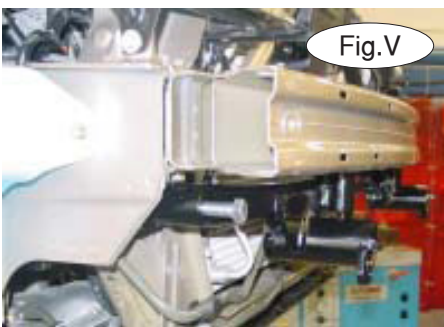


Fig.V



Fig.W

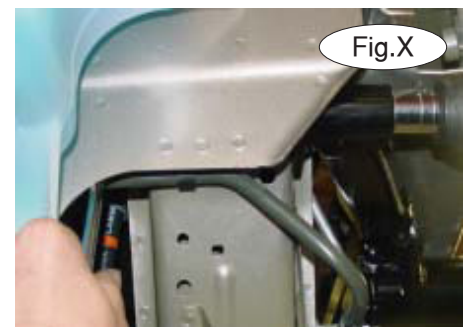


Fig.X

16. Tighten these bolts (Fig.X). Then, using the receiver brace as a drill template again, drill two holes through the bottom of the bumper core (Fig.Y).

17. Remove the front inside bolt (17mm head) from the subframe mount on each side (Fig.Z).

18. Hold the lower braces for each side over these mounting holes, as illustrated, and bolt into place with 12mm x 1.25 x 50mm bolts, lock washers, and flat washers (Fig.AA).



Fig.Y



Fig.Z



Fig.AA



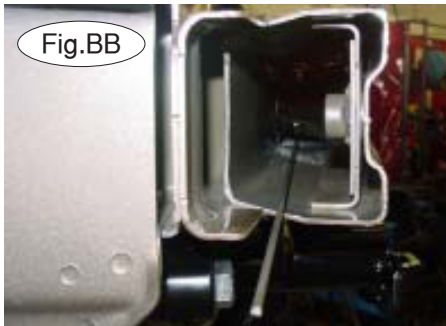
# BASEPLATE KIT INSTALLATION INSTRUCTIONS

**KIT# 521554-1**

03/11/16

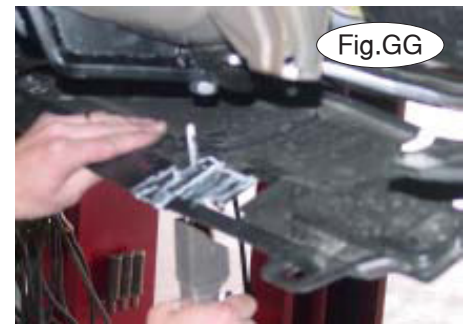
KS

ROADMASTER, Inc. 6110 NE 127th Ave. Vancouver, WA 98682 360-896-0407 fax 360-735-9300 www.roadmasterinc.com



19. Insert two threaded backing plates into the bumper core over the drilled holes (Fig.BB).

20. Bolt through the tops of the bottom braces, the receiver brace and the bottom of the bumper core into the backing plates with  $\frac{1}{2}$ " x  $3\frac{1}{2}$ " bolts, lock washers and nuts (Fig.CC).



21. Torque all mounting bolts to the specifications below (Fig.DD) then zip tie the ambient air sensor to the receiver brace cross bar (Fig.EE).

22. Replace the bumper plastic and the lower splash panel, then mark the trim areas around the lower brace (Fig.FF).



23. Trim the lower center splash panel to fit around the lower braces (Fig.GG). Remove the lower grilles from the fascia and refit, trimming the following areas to fit (Fig.HH,II), then reinstall the fascia, reversing the previous steps 2 and 3. Trim the grilles to fit, remove the fascia and install the trimmed grilles, then reinstall the fascia reversing steps 2 and 3 (Fig.JJ).



# BASEPLATE KIT INSTALLATION INSTRUCTIONS

**KIT# 521554-1**

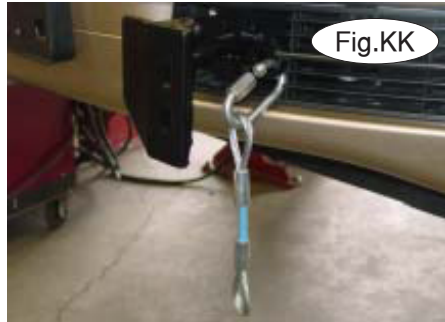
03/11/16  
KS

ROADMASTER, Inc. 6110 NE 127th Ave. Vancouver, WA 98682 360-896-0407 fax 360-735-9300 www.roadmasterinc.com

24. Insert the front braces into the receiver tubes and rotate 90 degrees to lock (Fig.KK,LL).

25. Install the tow bar according to the manufacturer's instructions and torque all mounting bolts to the specifications below.

26. Attach one end of the 8" safety cables (Fig.LL) to front holes on the receiver cross bar on each side of the receiver brace with the included cable connectors. Connect the other end to the tow vehicle's safety cables and the tow bar.



## BOLT TORQUE REQUIREMENTS

Note: The torque values represented below are intended as general guidelines. Torque requirements for specific applications may vary. Roadmaster does not warrant this information to be accurate for all applications and disclaims all liability for any claims or damages which may result from its use.

### STANDARD BOLTS

Thread Size	Grade	Torque
5/16.....	5.....	13 ft./lb.
3/8.....	5.....	23 ft./lb.
7/16.....	5.....	37 ft./lb.
1/2.....	5.....	56 ft./lb.
5/8.....	5.....	150 ft./lb.

### METRIC BOLTS

Thread Size	Grade	Plated / Unplated
8mm-1.0.....	8.8.....	20 ft./lb. 18 ft./lb.
8mm-1.25.....	8.8.....	19 ft./lb. 18 ft./lb.
10mm-1.25.....	8.8.....	38 ft./lb. 36 ft./lb.
10mm-1.5.....	8.8.....	37 ft./lb. 35 ft./lb.

### METRIC BOLTS

Thread Size	Grade	Plated / Unplated
12mm-1.25.....	8.8.....	70 ft./lb. 65 ft./lb.
12mm-1.5.....	8.8.....	66 ft./lb. 61 ft./lb.
12mm-1.75.....	8.8.....	65 ft./lb. 60 ft./lb.
14mm-2.0.....	8.8.....	104 ft./lb. 97 ft./lb.

All illustrations and specifications contained herein are based on the latest information available at the time of publication approval. ROADMASTER, INC. reserves the right to make changes at any time without notice in material, specification and models or to discontinue models.