



BASEPLATE KIT INSTALLATION INSTRUCTIONS

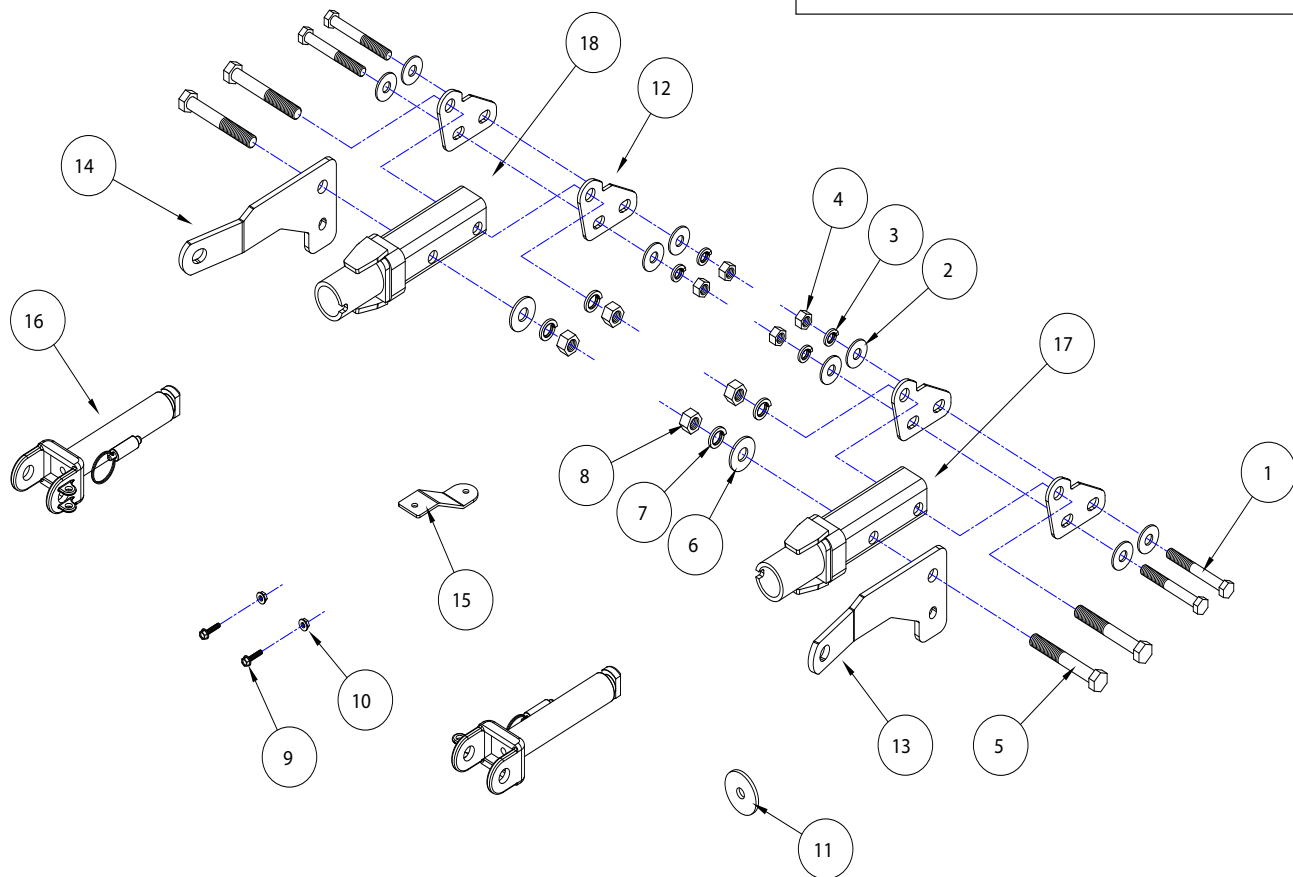
KIT# 522204-5

04/22/20
KS

ROADMASTER, Inc. 6110 NE 127th Ave. Vancouver, WA 98682 360-896-0407 fax 360-735-9300 www.roadmasterinc.com

Special Tools Needed
Die Grinder or Dremel

Important
Note: this bracket will not accommodate the Guardian rock shield, some models of the Tow Defender, Stowaway or the StowMaster and StowMaster All Terrain tow bars.



ITEM	QTY	NAME	MATERIAL
1	4	1/2" x 4" BOLT	350105-00
2	8	1/2" FLAT WASHER	350308-00
3	4	1/2" LOCK WASHER	350309-00
4	4	1/2" NUT	350258-00
5	4	5/8" x 4 1/2" BOLT	350159-00
6	2	5/8" FLAT WASHER	350312-00
7	4	5/8" LOCK WASHER	350313-00
8	4	5/8" NUT	350262-00
9	2	1/4"-20 x 1" WHIZ LOCK BOLT	350400-20
10	2	1/4"-20 WHIZ LOCK NUT	350251-20
11	1	1/2" PLATE WASHER	A-003086
12	4	REAR MOUNTING PLATE	A-006246
13	1	DRIVER SIDE SAFETY CABLE PLATE	B-003807
14	1	PASSENGER SIDE SAFETY CABLE PLATE	B-003808
15	1	BRAKEAWAY MOUNT	B-003809
16	2	ARM	C-002383
17	1	DRIVER SIDE RECEIVER	C-003481
18	1	PASSENGER SIDE RECEIVER	C-003482



BASEPLATE KIT INSTALLATION INSTRUCTIONS

KIT# 522204-5

04/22/20
KS

ROADMASTER, Inc. 6110 NE 127th Ave. Vancouver, WA 98682 360-896-0407 fax 360-735-9300 www.roadmasterinc.com

This is one of our direct-connect baseplate kits, which allows the visible front portion of the bracket to be easily removed from the front of the vehicle (Fig.A and Fig.B). The kit consists of the two main receiver braces, two removable front braces, and a hardware pack. The main receiver braces mount to the frame rails, and the removable front braces install in the main receiver brace.

Before starting the installation, lay out the kit components in order, as they will be used. This will give you a visual idea of how the components work, and will also confirm that everything is present and accounted for.



IMPORTANT: All baseplates **must** be assembled with all the bolts left loose for final adjustment and positioning (before tightening) unless otherwise instructed. All bolts **must** be torqued for proper strength. If more than one bolt is used per fastening point, the diagram may only show one. Use flat washers over all slotted holes and lock washers on all fasteners.

WARNING

Failure to heed these warnings or follow the installation instructions may result in a voided warranty, loss of towed vehicle, personal injury or death.

- Do not weld or modify this baseplate or its components. Welding or modification will void the warranty.
- Do not use this document as a basis to design/fabricate a baseplate, as it may not show all parts or structural components.
- We strongly recommend professional installation.
- If the towed vehicle has been in an accident, it must be properly repaired before attaching the baseplate. Do not install the baseplate if any structural frame damage is found.
- The installer must use all bolts and parts supplied. If running changes were made by the vehicle manufacturer after this kit was designed, some bolts or other fasteners may no longer be the correct size. It is the installer's responsibility to verify this kit is securely fastened to the vehicle.
- Use Loctite® Red on all bolts used to secure this baseplate. Torque all bolts to the specifications found at the end of these instructions. Do not over-torque the bolts or failure may occur.
- The installer must inspect the baseplate to ensure adequate clearance, particularly around hoses, air conditioner lines, radiators, etc. or non-warranty failure may result.
- Roadmaster manufactures many styles of baseplates. If your baseplate has removable arms, they must be removed before driving the vehicle, unless the arms can be pinned or padlocked in place. If not secured, the arms could vibrate out.
- Some motorhome chassis have such a tight turning radius that you can damage your motorhome, towed vehicle, tow bar or baseplate while turning sharply. Before getting on the road, test your turning radius in an empty parking lot. Turning too sharply could result in non-warranty damage to your towing system, motorhome and/or towed vehicle.
- Do not back up with the towed vehicle attached or non-warranty damage will occur to your towing system or vehicles.
- The safety cables must connect the towing vehicle to the towed vehicle frame to frame, with the cables crossed, with enough slack for sharp turns. See cable instructions for proper routing. Failure to do so will result in non-warranty damage and/or the loss of the towed vehicle.
- This kit is designed for use with ROADMASTER tow bars and ROADMASTER adapters only. Using this kit with other brands, without an approved ROADMASTER adapter, may result in non-warranty damage or injury.
- Receiver extensions and out-of-level towing situations of 3 inches or more. This can cause the system to swing much higher and lower, causing excessive strain on the tow bar, baseplate and frame. That can cause the towing system to fail, causing property damage, personal injury or even death. If you must use a receiver extension or drop hitch to tow, it will reduce your receiver's weight capacity by 1/3 to avoid damaging your system. Never use more than one extension and/or drop hitch, as this will void your warranty.
- Every 3,000 miles, the owner must inspect all mounting points for cracks or fatigue, and check the fasteners for proper torque, according to the bolt torque requirements chart on the last page of these instructions.
- The owner must follow the vehicle manufacturer's instructions to prepare the vehicle for towing. Failure to do so may cause severe damage to the vehicle.
- This baseplate is only warranted for the original installation. Installing a used baseplate on another vehicle is not recommended and will void the warranty.

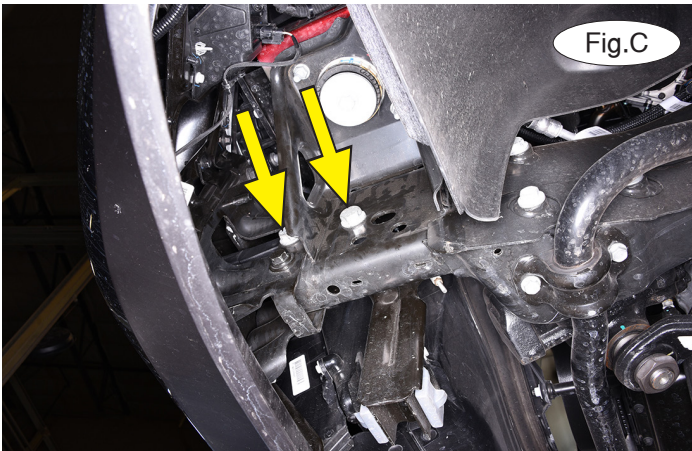


BASEPLATE KIT INSTALLATION INSTRUCTIONS

KIT# 522204-5

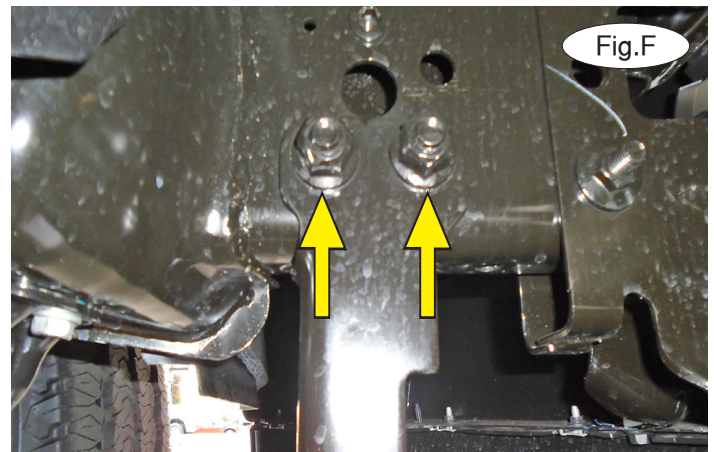
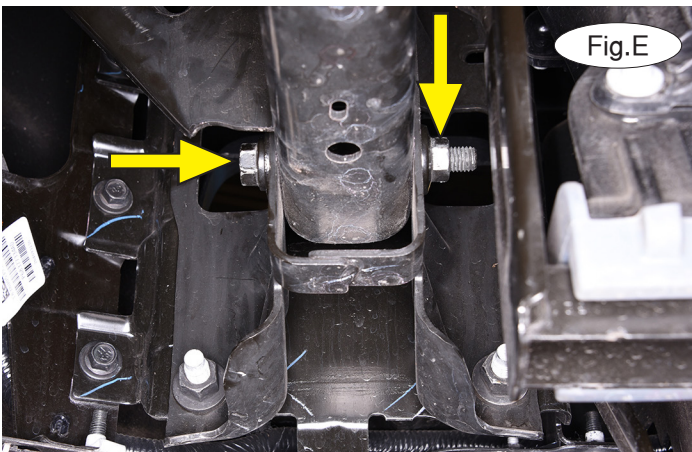
04/22/20
KS

ROADMASTER, Inc. 6110 NE 127th Ave. Vancouver, WA 98682 360-896-0407 fax 360-735-9300 www.roadmasterinc.com



1. **Important:** please use all supplied bolts and parts and read all instructions carefully before beginning this installation. The majority of questions you may have can be answered within the text, and proper installation will ensure safe and secure travel. Now, begin the installation. On each side, use a 15/16" socket to remove the two bolts attaching the tow hook to the frame (Fig.C) and the nut retainers (Fig.D). Pull straight out on the tow hook to remove it.

2. On each side, use an 18mm socket and box wrench to remove the lower bumper mount bolt and nut (Fig.E).



3. **For models with tow hooks:** Proceed to step 4. **For models without tow hooks:** On each side, remove two 15/16" nuts and bolts attaching the lower frame horn (Fig.F). It will not be replaced. *Note:* Retain the lower frame horn and its hardware for replacement in case the baseplate is ever removed.

4. On each side, use the supplied plate washer and a permanent marker to scribe the line for trimming. On the bottom of the tow hook opening, roll the plate washer, as you mark it (Fig.G – left to right). Repeat this process for the top of the opening before using a die grinder or Dremel to trim it. **For models without tow hooks:** Use the same process (Fig.H).



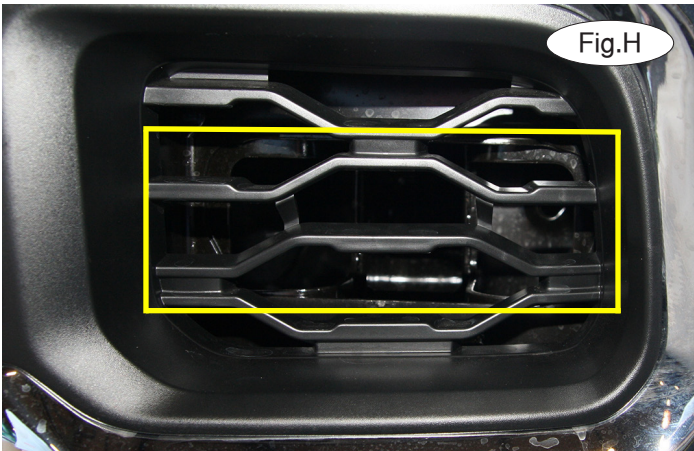


BASEPLATE KIT INSTALLATION INSTRUCTIONS

KIT# 522204-5

04/22/20
KS

ROADMASTER, Inc. 6110 NE 127th Ave. Vancouver, WA 98682 360-896-0407 fax 360-735-9300 www.roadmasterinc.com

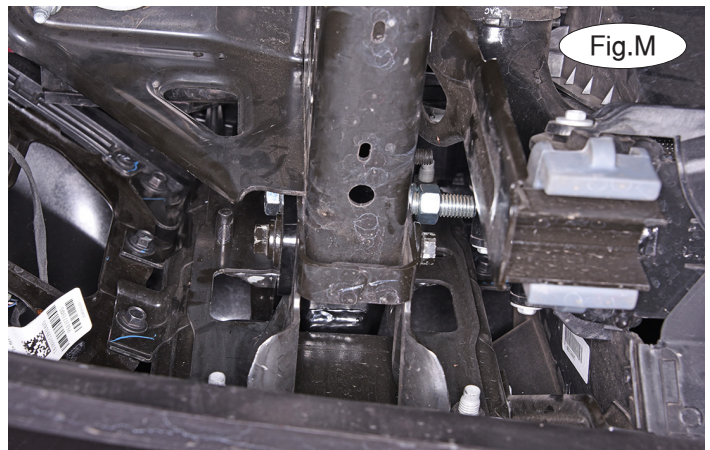
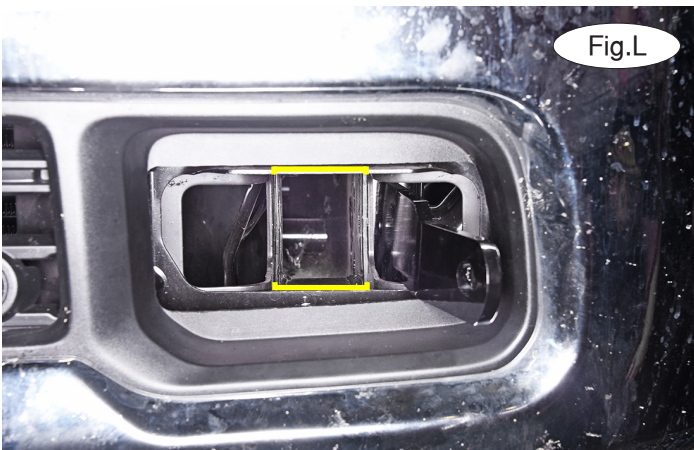


5. Working on the driver's side only, use the drawing on page 1 to locate the side-specific safety cable tab. Insert it from behind the bumper (Fig.I) and out through the tow hook opening. Then, use the 18mm hardware from step 2 to loosely bolt it into place (Fig.J).



6. Use the drawing on page one to locate the driver's side main receiver brace and install it through the tow hook opening, between the walls of the frame (Fig.K). *Note:* Due to manufacturing variances, on each side, you may need to use a die grinder to trim the top or bottom of the bumper webbing (or potentially, both) in order to allow clearance for the baseplate. Use the yellow lines in Figure L as a reference, if this is necessary.

7. Through the front tow hook bolt opening, insert a 5/8" x 4 1/2" bolt, passing it through the safety cable tab, frame, baseplate and frame. Finish with a 5/8" flat washer, 5/8" lock washer and 5/8" nut (Fig.M).



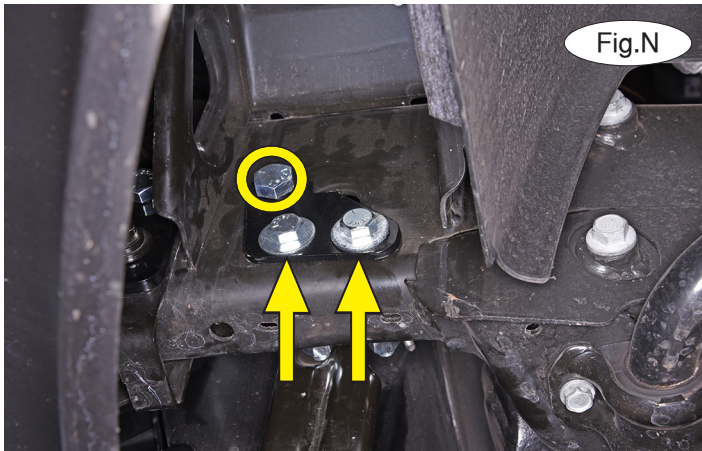


BASEPLATE KIT INSTALLATION INSTRUCTIONS

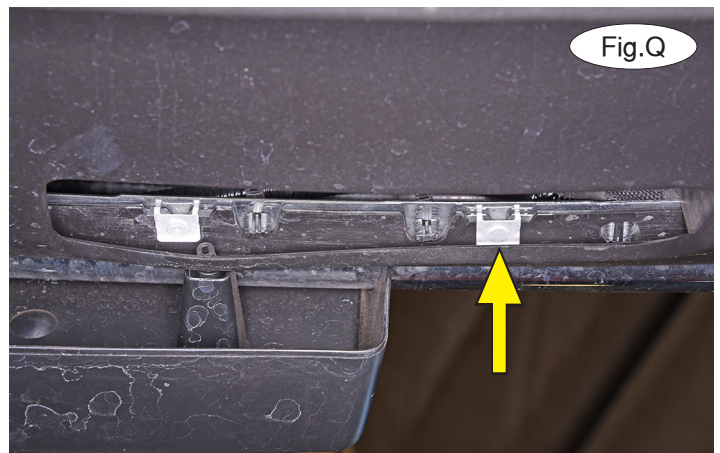
KIT# 522204-5

04/22/20
KS

ROADMASTER, Inc. 6110 NE 127th Ave. Vancouver, WA 98682 360-896-0407 fax 360-735-9300 www.roadmasterinc.com



8. Use the drawing to locate two of the rear support plates. Place one on either side of the frame and bolt through the upper mount using the supplied 5/8" x 4½" bolts, 5/8" lock washer and 5/8" nut (Fig.N – circle). On the rear mounts, pass two ½" x 4" bolts and ½" flat washers from the outside of the vehicle through the rear support plate, frame, plate and finish with two ½" flat washers, ½" lock washers and ½" nuts (Fig.N – arrows).



9. Repeat steps 4 through 7 for the passenger side. Figure O shows the finished installation on the driver's side.
10. Tighten all remaining bolts to the torque specifications found at the end of these instructions.
11. We recommend mounting the wiring connector as shown in Figure P. If you are using our BrakeAway, locate a 10mm nut on the underside of the bumper on the passenger side on the vehicle (Fig.Q). Remove it, place our bracket over the stud, and replace the nut. Figure R shows the finished installation of the BrakeAway bracket. Figure S shows the finished trimming of the fascia and the baseplate installation.





BASEPLATE KIT INSTALLATION INSTRUCTIONS

KIT# 522204-5

04/22/20
KS

ROADMASTER, Inc. 6110 NE 127th Ave. Vancouver, WA 98682 360-896-0407 fax 360-735-9300 www.roadmasterinc.com

12. On each side, insert the removable front arm into the front receiver 90 degrees from its final towing position, depressing the spring-loaded pin against the receiver. Twist back 90 degrees until the spring-loaded pin snaps into place in the notch on the receiver, locking the arm into place in its final towing position. **Please note: it is the owner's responsibility to ensure the locking of the pins before towing. Otherwise, failure of the towing system will result.**



Fig.T

13. Install the tow bar to the baseplate according to the manufacturer's instructions.

IMPORTANT!

Safety cables are required by law. When towing, connect safety cables to the safety cable tabs illustrated on the first page and in Figure T. Make certain there is adequate slack in the cables to allow a full turning radius; otherwise, damage will result. If necessary, longer cables or cable extensions are available.

Three options for attaching the wiring plug to the main receiver brace

For four-wire round plugs: attach to the plug mounting plate and then use the two supplied 3/4" self-tapping screws to attach the mounting plate to the grille.

For four-wire flat plugs: place the plug through the mounting plug plate, and then secure it using the supplied zip tie on the front of the plug (Fig.U). Use the two supplied 3/4" self-tapping screws to attach the mounting plate to the grille on the front of the main receiver brace.

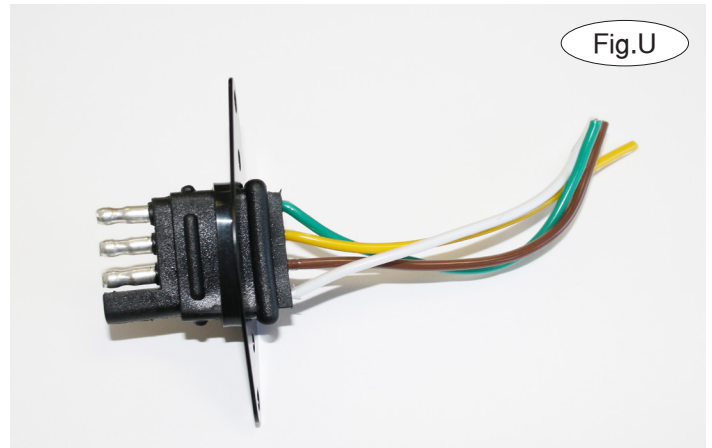


Fig.U

BOLT TORQUE REQUIREMENTS

Note: The torque values represented below are intended as general guidelines. Torque requirements for specific applications may vary. Roadmaster does not warrant this information to be accurate for all applications and disclaims all liability for any claims or damages which may result from its use.

STANDARD BOLTS

Thread Size	Grade	Torque
5/16-18	5	13 ft./lb.
3/8-16	5	23 ft./lb.
7/16-14	5	37 ft./lb.
1/2-13	5	57 ft./lb.
5/8-11	5	112 ft./lb.

METRIC BOLTS

Thread Size	Grade	Torque
6mm-1.0	8.8	6 ft./lb.
8mm-1.0	8.8	18 ft./lb.
8mm-1.25	8.8	16 ft./lb.
10mm-1.25	8.8	36 ft./lb.
10mm-1.5	8.8	31 ft./lb.

METRIC BOLTS

Thread Size	Grade	Torque
12mm-1.25	8.8	64 ft./lb.
12mm-1.5	8.8	60 ft./lb.
12mm-1.75	8.8	55 ft./lb.
14mm-2.0	8.8	88 ft./lb.

All illustrations and specifications contained herein are based on the latest information available at the time of publication approval. ROADMASTER, INC. reserves the right to make changes at any time without notice in material, specification and models or to discontinue models.