



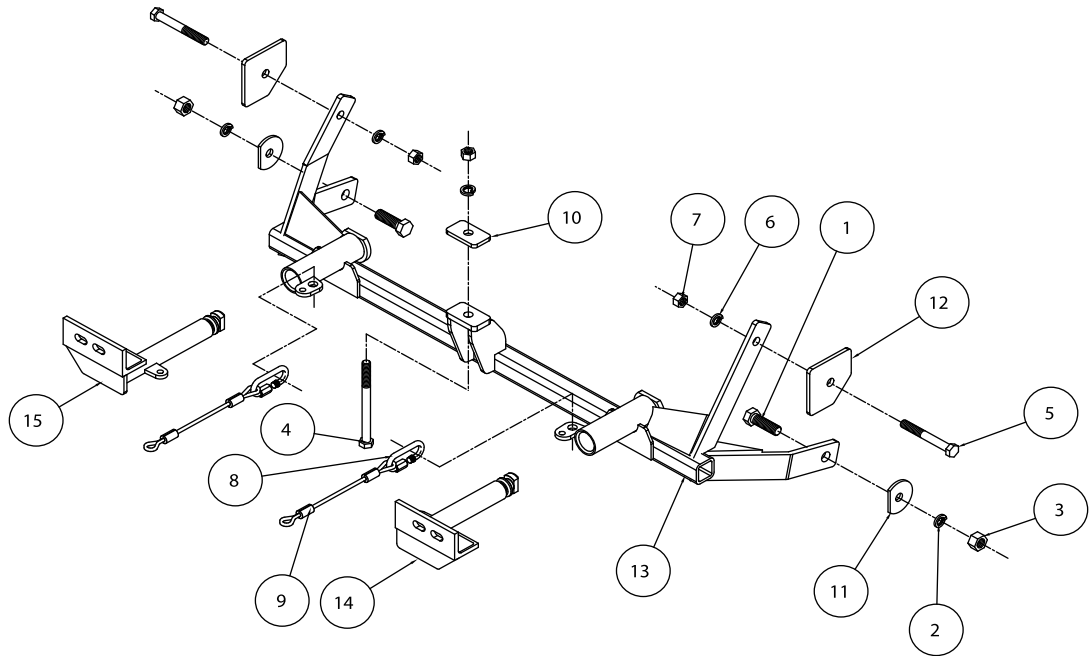
BASEPLATE KIT INSTALLATION INSTRUCTIONS

KIT# 523156-1

05/28/08
KS

ROADMASTER, Inc. 6110 NE 127th Ave. Vancouver, WA 98682 360-896-0407 fax 360-735-9300 www.roadmasterinc.com

ROADMASTER, INC.



ITEM	QTY	NAME	MATERIAL
1	2	5/8" x 2" BOLT	350150-00
2	2	5/8" LOCK WASHER	350313-00
3	2	5/8" HEX NUT	350262-00
4	1	1/2" x 6" BOLT	350109-00
5	2	1/2" x 4" BOLT	350105-00
6	3	1/2" LOCK WASHER	350309-00
7	3	1/2" HEX NUT	350258-00
8	2	QUICK LINK	200008-00
9	2	SAFETY CABLE 8ft	500646-08
10	1	1/4" x 1 1/2" x 2 1/2" ROUND HOLE BACKING PLATE	A-000134
11	2	5/8" CLIPPED PLATE WASHER	A-001763
12	2	1/4" x 3 1/2" x 3 1/2" ROUND HOLE BACKING PLATE	A-002611
13	1	MAIN RECEIVER	C-001683
14	1	DRIVER SIDE ARM	C-001684
15	1	PASSENGER SIDE ARM	C-001685



BASEPLATE KIT INSTALLATION INSTRUCTIONS

KIT# 523156-1

05/28/08
KS

ROADMASTER, Inc. 6110 NE 127th Ave. Vancouver, WA 98682 360-896-0407 fax 360-735-9300 www.roadmasterinc.com

This is one of our EZ2 series brackets, which allows the visible front portion of the bracket to be easily removed from the front of the vehicle (Fig.A and Fig.B). The bracket consists of a main receiver brace, two removable front braces, and a hardware pack.

The main receiver brace mounts to the frame rails and the bumper core. The removable front braces install in the main receiver brace.

Before starting the installation, lay out the kit components in order, as they will be used. This will give you a visual idea of how the components work, and will also confirm that everything is present and accounted for.



Fig.A



Fig.B

IMPORTANT: All baseplates **must** be assembled with all the bolts left loose for final adjustment and positioning (before tightening) unless otherwise instructed. All bolts **must** be torqued for proper strength. If more than one bolt is used per fastening point, the diagram may only show one. Use flat washers over all slotted holes and lock washers on all fasteners.

WARNING

Failure to heed these warnings or follow the installation instructions may result in a voided warranty, loss of towed vehicle, personal injury or death.

- Do not weld or modify this baseplate or its components. Welding or modification will void the warranty.
- Do not use this document as a basis to design/fabricate a baseplate, as it may not show all parts or structural components.
- We strongly recommend professional installation.
- If the towed vehicle has been in an accident, it must be properly repaired before attaching the baseplate. Do not install the baseplate if any structural frame damage is found.
- The installer must use all bolts and parts supplied. If running changes were made by the vehicle manufacturer after this kit was designed, some bolts or other fasteners may no longer be the correct size. It is the installer's responsibility to verify this kit is securely fastened to the vehicle.
- Use Loctite® Red on all bolts used to secure this baseplate. Torque all bolts to the specifications found at the end of these instructions. Do not over-torque the bolts or failure may occur.
- The installer must inspect the baseplate to ensure adequate clearance, particularly around hoses, air conditioner lines, radiators, etc. or non-warranty failure may result.
- Roadmaster manufactures many styles of baseplates. If your baseplate has removable arms, they must be removed before driving the vehicle, unless the arms can be pinned or padlocked in place. If not secured, the arms could vibrate out.
- Some motorhome chassis have such a tight turning radius that you can damage your motorhome, towed vehicle, tow bar or baseplate while turning sharply. Before getting on the road, test your turning radius in an empty parking lot. Turning too sharply could result in non-warranty damage to your towing system, motorhome and/or towed vehicle.
- Do not back up with the towed vehicle attached or non-warranty damage will occur to your towing system or vehicles.
- The safety cables must connect the towing vehicle to the towed vehicle frame to frame, with the cables crossed, with enough slack for sharp turns. See cable instructions for proper routing. Failure to do so will result in non-warranty damage and/or the loss of the towed vehicle.
- This kit is designed for use with ROADMASTER tow bars and ROADMASTER adapters only. Using this kit with other brands, without an approved ROADMASTER adapter, may result in non-warranty damage or injury.
- Receiver extensions and out-of-level towing situations of 3 inches or more. This can cause the system to swing much higher and lower, causing excessive strain on the tow bar, baseplate and frame. That can cause the towing system to fail, causing property damage, personal injury or even death. If you must use a receiver extension or drop hitch to tow, it will reduce your receiver's weight capacity by 1/3 to avoid damaging your system. Never use more than one extension and/or drop hitch, as this will void your warranty.
- Every 3,000 miles, the owner must inspect all mounting points for cracks or fatigue, and check the fasteners for proper torque, according to the bolt torque requirements chart on the last page of these instructions.
- The owner must follow the vehicle manufacturer's instructions to prepare the vehicle for towing. Failure to do so may cause severe damage to the vehicle.
- This baseplate is only warranted for the original installation. Installing a used baseplate on another vehicle is not recommended and will void the warranty.



BASEPLATE KIT INSTALLATION INSTRUCTIONS

KIT# 523156-1

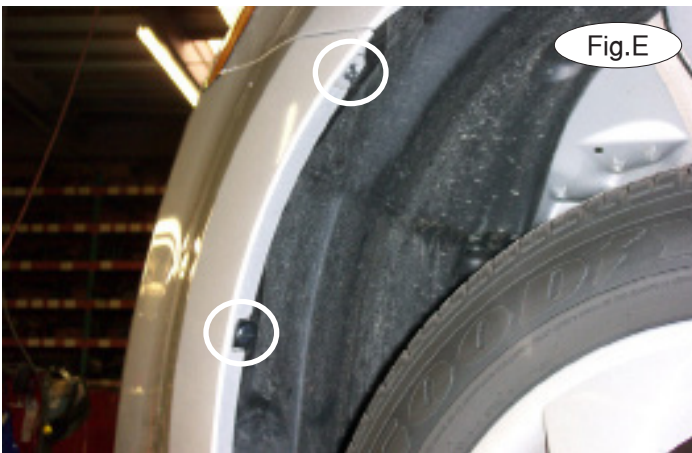
05/28/08
KS

ROADMASTER, Inc. 6110 NE 127th Ave. Vancouver, WA 98682 360-896-0407 fax 360-735-9300 www.roadmasterinc.com



1. **Important:** please use all supplied bolts and parts and read all instructions carefully before beginning this installation. The majority of questions you may have can be answered within the text, and proper installation will ensure safe and secure travel. Now, begin the installation. Remove two Phillips head hood stops attaching the fascia to the core support (Fig.C).

2. Remove three plastic fasteners and one 10mm (head) bolt attaching the top of the fascia to the core support (Fig.D). *Note:* the 2009 Toyota Matrix does not have a 10mm (head) bolt to remove.



3. On each side, remove two plastic fasteners attaching the fascia to the fender liner (Fig.E).

4. On each side, remove three 10mm (head) bolts attaching the lower fender liner to the fascia (Fig.F – driver's side).

5. Remove two plastic fasteners attaching the grille to the bottom of the bumper core. *Note:* they are located behind the grille.

6. Pull back the fender liners and disconnect the fog lights, if the vehicle is so equipped.

7. Pull out and forward on the corners of the fascia to remove it (Fig.G).





BASEPLATE KIT INSTALLATION INSTRUCTIONS

KIT# 523156-1

05/28/08
KS

ROADMASTER, Inc. 6110 NE 127th Ave. Vancouver, WA 98682 360-896-0407 fax 360-735-9300 www.roadmasterinc.com



Fig.H

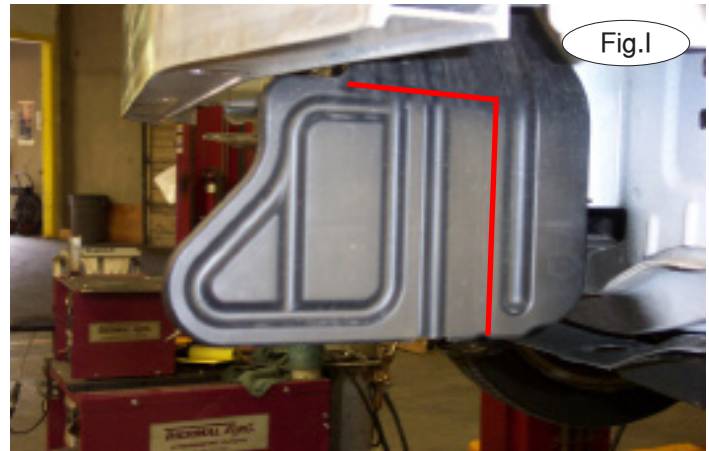


Fig.I

8. Temporarily remove the foam shock absorption pad (Fig.H). **For 2009 Toyota matrix models:** the air deflectors must also be either removed or trimmed. Use the red lines in Figure I as a reference for trimming on both sides.

9. Place the main receiver brace between the inside of the frame rail and the inside of the tie down loops. Then, on each side, position a 5/8" x 2" bolt through the main receiver brace and the tie down loop and thread a 5/8" plate washer on the bolt. Secure the attachment with a 5/8" lock washer and nut (Fig.J).



Fig.J



Fig.K

10. Using the center mounting point of the main receiver brace, clamp the brace to the bumper core so the mounting point aligns to the groove in the bottom of the bumper core (Fig.K).

11. On each side, place a 1/4" x 3 1/2" x 3 1/2" backing plate against the side of the frame rail where it fits into the corner, flush with the side, and mark the hole with a center punch (Fig.L).

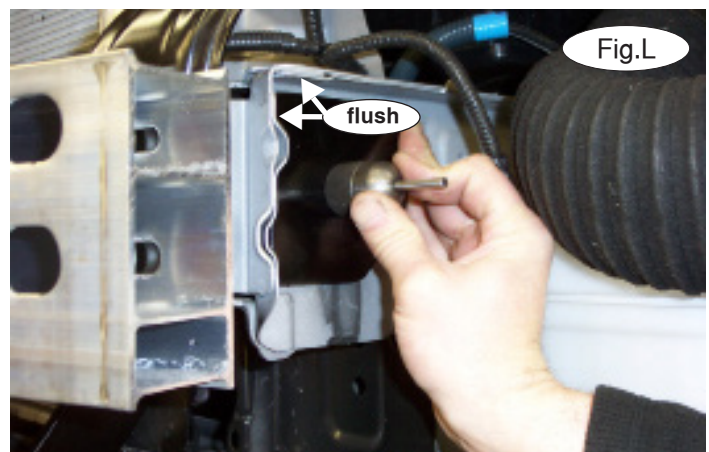


Fig.L



BASEPLATE KIT INSTALLATION INSTRUCTIONS

KIT# 523156-1

05/28/08
KS

ROADMASTER, Inc. 6110 NE 127th Ave. Vancouver, WA 98682 360-896-0407 fax 360-735-9300 www.roadmasterinc.com



Fig.M



Fig.N

12. Drill a $\frac{1}{2}$ " hole through the inside and outside of the frame rail (Fig.M). *Note:* make certain the hole is drilled straight to align the upper mounting point of the main receiver brace. *Note:* before drilling, make certain you will not drill through any engine components on the other side.

13. Position a $\frac{1}{2}$ " x 4" bolt through the $\frac{1}{4}$ " x $3\frac{1}{2}$ " x $3\frac{1}{2}$ " backing plate and through the frame rail and into the main receiver brace. Secure the attachment with a $\frac{1}{2}$ " lock washer and nut (Fig.N).



Fig.O

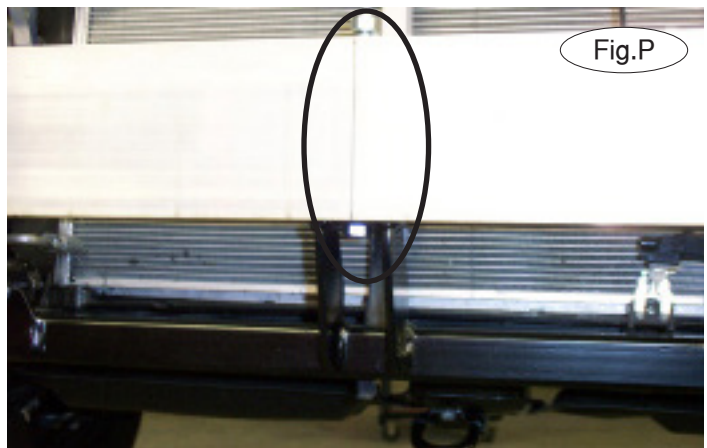


Fig.P

14. Tighten the bolts to the bolt torque requirements found at the end of this document.

15. Remove the clamp. Using the pre-existing hole in the main receiver brace as a template, drill a $\frac{1}{2}$ " hole through all four layers of the bumper core (Fig.O).

16. Position a $\frac{1}{2}$ " by 6" bolt through the main receiver brace and bumper core. Place a $\frac{1}{4}$ " x $1\frac{1}{2}$ " x $2\frac{3}{4}$ " backing plate over the bolt and secure the attachment with a $\frac{1}{2}$ " lock washer and nut (Fig.P). Tighten the bolt to the bolt torque requirements found at the end of this document.

17. **For 2009 Pontiac Vibe models:** on each side, trim the grille using the red lines in Figure P as a guide. *Note:* Figure Q shows the driver's side. **For 2009 Toyota Matrix models:** on each side, trim the grille using the red lines in Figure R as a guide.



Fig.Q

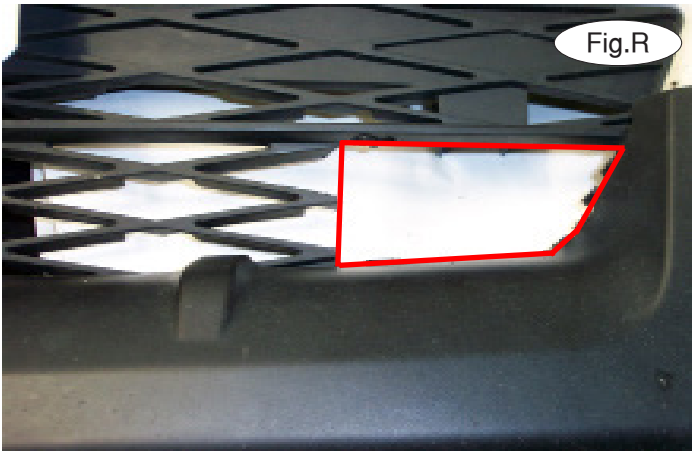


BASEPLATE KIT INSTALLATION INSTRUCTIONS

KIT# 523156-1

05/28/08
KS

ROADMASTER, Inc. 6110 NE 127th Ave. Vancouver, WA 98682 360-896-0407 fax 360-735-9300 www.roadmasterinc.com



18. **For 2009 Pontiac Vibe models:** reinstall the foam shock absorption pad and reassemble the fascia, reversing steps 1 through 7. **For 2009 Toyota Matrix models:** reinstall the foam shock absorption pad and the air deflectors, reassemble the fascia, reversing steps 1 through 7.
19. Insert the removable front bracket arms into the front receiver braces, and twist each one 90 degrees to lock.
20. Attach the 8" safety cables with the cable connectors (Q-Links) to the front of the receiver braces (Fig.S).
21. Attach the ends of the safety cables to the tow vehicle's safety cables.
22. Install the tow bar to the mounting bracket according to the manufacturer's instructions.

BOLT TORQUE REQUIREMENTS

Note: The torque values represented below are intended as general guidelines. Torque requirements for specific applications may vary. Roadmaster does not warrant this information to be accurate for all applications and disclaims all liability for any claims or damages which may result from its use.

STANDARD BOLTS

Thread Size	Grade	Torque
5/16.....	5.....	13 ft./lb.
3/8.....	5.....	23 ft./lb.
7/16.....	5.....	37 ft./lb.
1/2.....	5.....	56 ft./lb.
5/8.....	5.....	150 ft./lb.

METRIC BOLTS

Thread Size	Grade	Plated / Unplated
8mm-1.0	8.8	20 ft./lb. 18 ft./lb.
8mm-1.25	8.8	19 ft./lb. 18 ft./lb.
10mm-1.25	8.8	38 ft./lb. 36 ft./lb.
10mm-1.5	8.8	37 ft./lb. 35 ft./lb.

METRIC BOLTS

Thread Size	Grade	Plated / Unplated
12mm-1.25	8.8	70 ft./lb. 65 ft./lb.
12mm-1.5	8.8	66 ft./lb. 61 ft./lb.
12mm-1.75	8.8	65 ft./lb. 60 ft./lb.
14mm-2.0	8.8	104 ft./lb. 97 ft./lb.

All illustrations and specifications contained herein are based on the latest information available at the time of publication approval. ROADMASTER, INC. reserves the right to make changes at any time without notice in material, specification and models or to discontinue models.