



# BASEPLATE KIT INSTALLATION INSTRUCTIONS

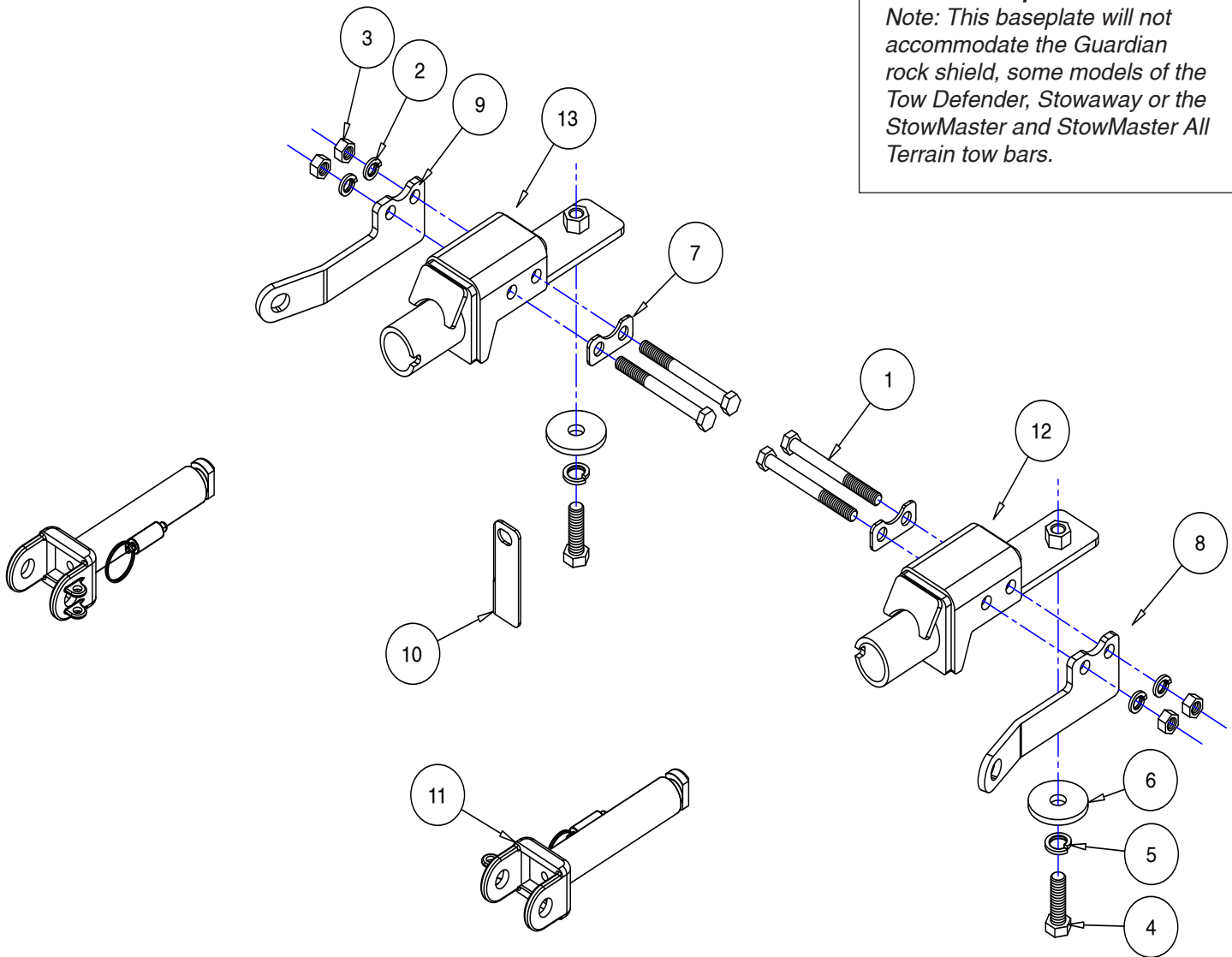
**KIT# 523195-5**

02/03/22  
KS

ROADMASTER, Inc. 6110 NE 127th Ave. Vancouver, WA 98682 360-896-0407 fax 360-735-9300 www.roadmasterinc.com

**Important**

Note: This baseplate will not accommodate the Guardian rock shield, some models of the Tow Defender, Stowaway or the StowMaster and StowMaster All Terrain tow bars.



ITEM	QTY	NAME	PART #
1	4	1/2" x 5" BOLT	350107-00
2	4	1/2" LOCK WASHER	350309-00
3	4	1/2" HEX NUT	350258-00
4	2	5/8" x 2" BOLT	350150-00
5	2	5/8" LOCK WASHER	350313-00
6	2	5/8" PLATE WASHER	350352-00
7	2	1/8" x 1 1/4" x 2 9/16" BACKING PLATE	A005218
8	1	DRIVER SIDE SAFETY CABLE PLATE	B003494
9	1	PASSENGER SIDE SAFETY CABLE PLATE	B003495
10	1	BRAKEAWAY MOUNT	B004044
11	2	ARM	C002383
12	1	DRIVER SIDE RECEIVER	C003254
13	1	PASSENGER SIDE RECEIVER	C003255



# BASEPLATE KIT INSTALLATION INSTRUCTIONS

**KIT# 523195-5**

02/03/22  
KS

ROADMASTER, Inc. 6110 NE 127th Ave. Vancouver, WA 98682 360-896-0407 fax 360-735-9300 www.roadmasterinc.com

This is one of our direct-connect baseplates, which allows the visible front portion of the bracket to be easily removed from the front of the vehicle (Fig.A and Fig.B). The bracket consists of two main receiver braces, two removable front braces and a hardware pack.

The main receiver braces mount to the frame rails. The removable front braces install in the main receiver brace.

Before starting the installation, lay out the kit components in order, as they will be used. This will give you a visual idea of how the components work, and will also confirm that everything is present and accounted for.



**IMPORTANT:** All baseplates **must** be assembled with all the bolts left loose for final adjustment and positioning (before tightening) unless otherwise instructed. All bolts **must** be torqued for proper strength. If more than one bolt is used per fastening point, the diagram may only show one. Use flat washers over all slotted holes and lock washers on all fasteners.

## WARNING

Failure to heed these warnings or follow the installation instructions may result in a voided warranty, loss of towed vehicle, personal injury or death.

- Do not weld or modify this baseplate or its components. Welding or modification will void the warranty.
- Do not use this document as a basis to design/fabricate a baseplate, as it may not show all parts or structural components.
- We strongly recommend professional installation.
- If the towed vehicle has been in an accident, it must be properly repaired before attaching the baseplate. Do not install the baseplate if any structural frame damage is found.
- The installer must use all bolts and parts supplied. If running changes were made by the vehicle manufacturer after this kit was designed, some bolts or other fasteners may no longer be the correct size. It is the installer's responsibility to verify this kit is securely fastened to the vehicle.
- Use Loctite® Red on all bolts used to secure this baseplate. Torque all bolts to the specifications found at the end of these instructions. Do not over-torque the bolts or failure may occur.
- The installer must inspect the baseplate to ensure adequate clearance, particularly around hoses, air conditioner lines, radiators, etc. or non-warranty failure may result.
- Roadmaster manufactures many styles of baseplates. If your baseplate has removable arms, they must be removed before driving the vehicle, unless the arms can be pinned or padlocked in place. If not secured, the arms could vibrate out.
- Some motorhome chassis have such a tight turning radius that you can damage your motorhome, towed vehicle, tow bar or baseplate while turning sharply. Before getting on the road, test your turning radius in an empty parking lot. Turning too sharply could

result in non-warranty damage to your towing system, motorhome and/or towed vehicle.

- Do not back up with the towed vehicle attached or non-warranty damage will occur to your towing system or vehicles.
- The safety cables must connect the towing vehicle to the towed vehicle frame to frame, with the cables crossed, with enough slack for sharp turns. See cable instructions for proper routing. Failure to do so will result in non-warranty damage and/or the loss of the towed vehicle.
- This kit is designed for use with ROADMASTER tow bars and ROADMASTER adapters only. Using this kit with other brands, without an approved ROADMASTER adapter, may result in non-warranty damage or injury.
- Receiver extensions and out-of-level towing situations of 3 inches or more. This can cause the system to swing much higher and lower, causing excessive strain on the tow bar, baseplate and frame. That can cause the towing system to fail, causing property damage, personal injury or even death. If you must use a receiver extension or drop hitch to tow, it will reduce your receiver's weight capacity by 1/3 to avoid damaging your system. Never use more than one extension and/or drop hitch, as this will void your warranty.
- Every 3,000 miles, the owner must inspect all mounting points for cracks or fatigue, and check the fasteners for proper torque, according to the bolt torque requirements chart on the last page of these instructions.
- The owner must follow the vehicle manufacturer's instructions to prepare the vehicle for towing. Failure to do so may cause severe damage to the vehicle.
- This baseplate is only warranted for the original installation. Installing a used baseplate on another vehicle is not recommended and will void the warranty.

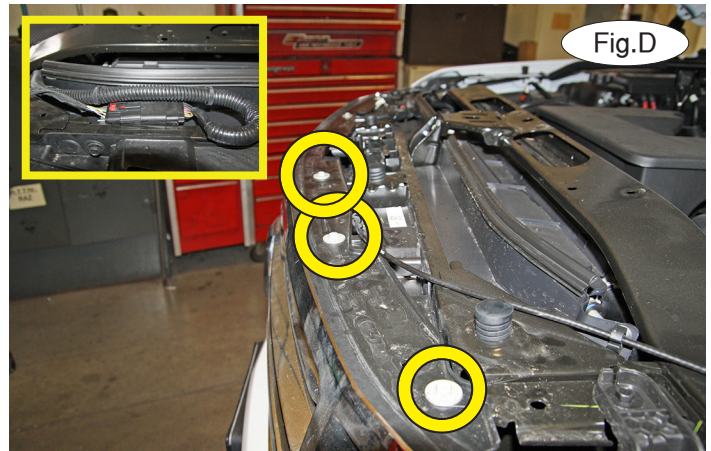
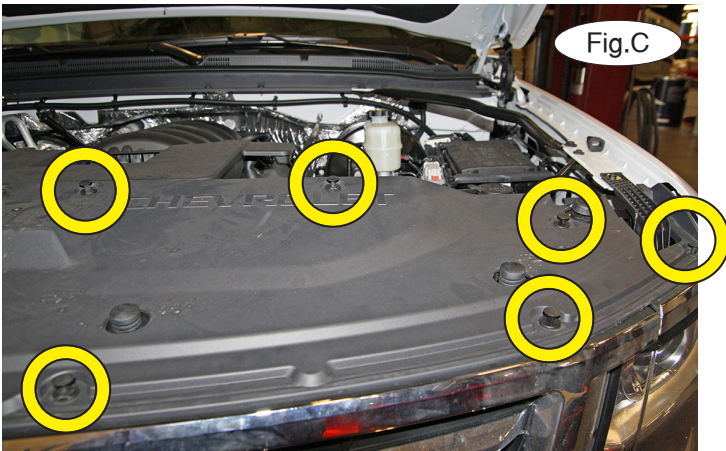


# BASEPLATE KIT INSTALLATION INSTRUCTIONS

**KIT# 523195-5**

02/03/22  
KS

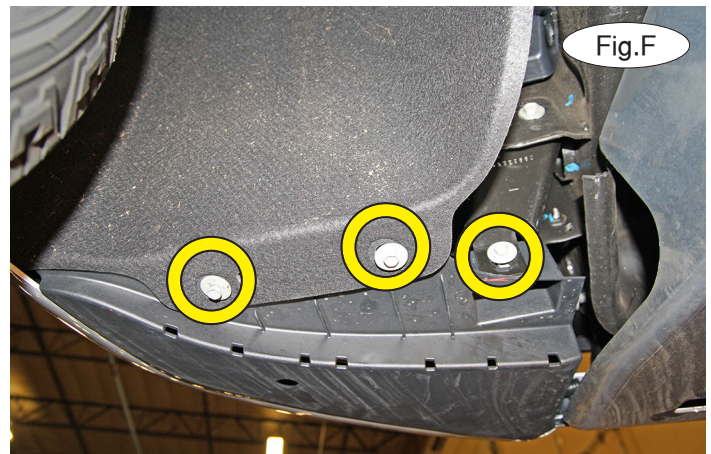
ROADMASTER, Inc. 6110 NE 127th Ave. Vancouver, WA 98682 360-896-0407 fax 360-735-9300 www.roadmasterinc.com



1. **Important:** please use all supplied bolts and parts and read all instructions carefully before beginning this installation. The majority of questions you may have can be answered within the text, and proper installation will ensure safe and secure travel. Now, begin the installation. On each side, remove six plastic fasteners attaching the top of the radiator cover to the core support (Fig.C).

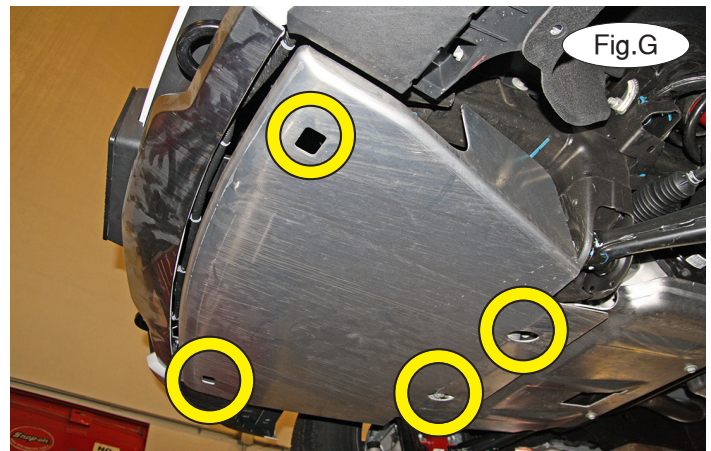
2. On each side, remove three 10mm (head) bolts attaching the upper grille to the core support (Fig.D). Then, disconnect the wiring harness on the passenger side (Fig.D – inset).

3. On each side, remove five 7mm screws attaching the fender liner to the fascia and the fascia to the fender (Fig.E).



4. On each side, remove three 10mm (head) bolts attaching the fender liner to the fascia and the splash shield to the frame (Fig.F).

5. Remove four 15mm (head) bolts attaching the skid-plate to the frame (Fig.G).



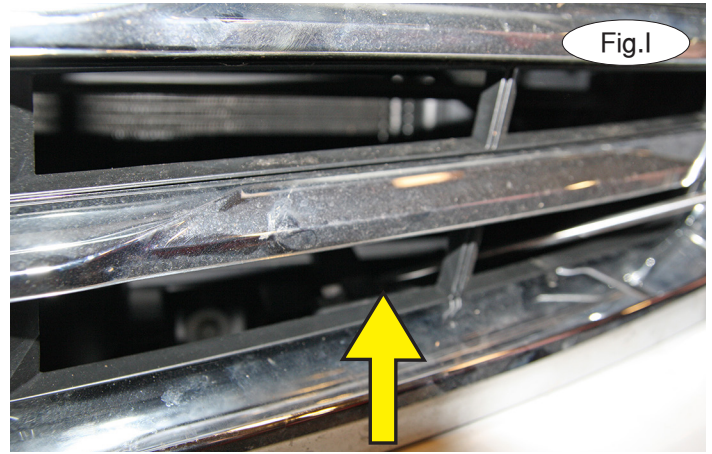
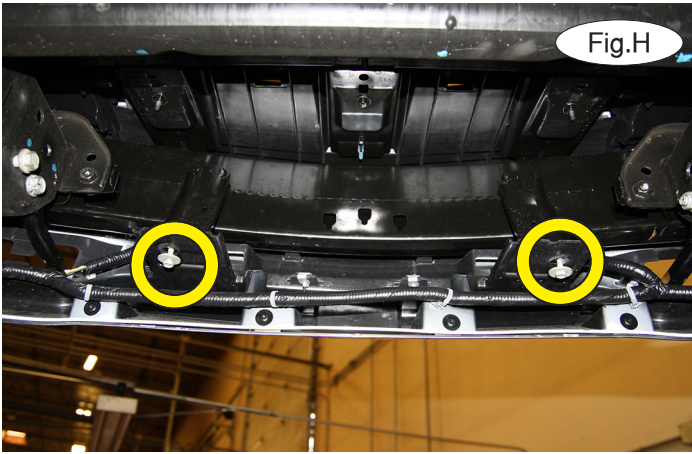


# BASEPLATE KIT INSTALLATION INSTRUCTIONS

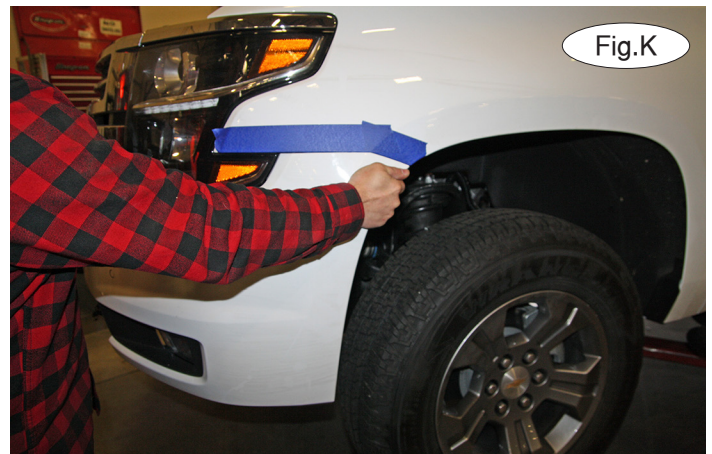
**KIT# 523195-5**

02/03/22  
KS

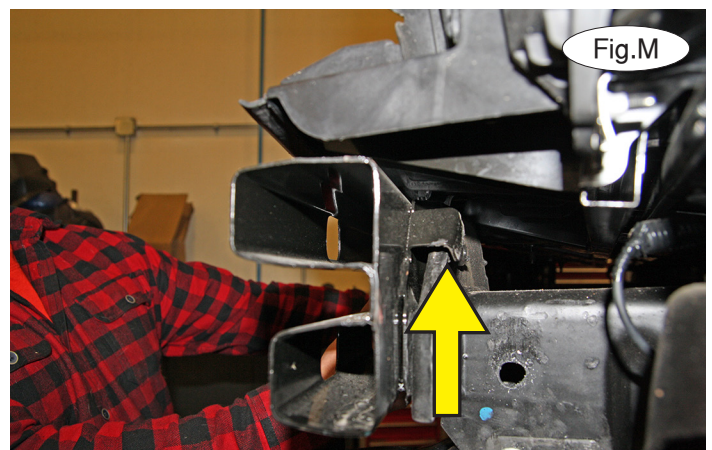
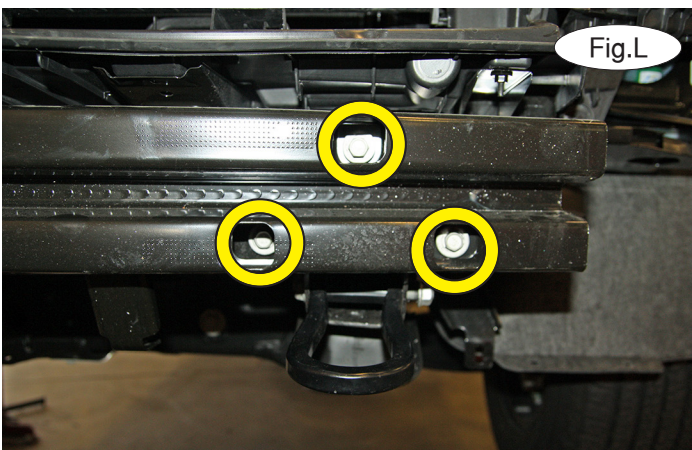
ROADMASTER, Inc. 6110 NE 127th Ave. Vancouver, WA 98682 360-896-0407 fax 360-735-9300 www.roadmasterinc.com



6. Remove two 10mm (head) bolts attaching the fascia to the bumper core (Fig.H).
7. On each side, use a flathead screwdriver to release the plastic tab attaching the fascia to the radiator support (Fig.I).



8. Pull up on the center (Fig.J) and out on the corners of the fascia to remove it (Fig.K).
9. On each side, remove three 15mm (head) bolts attaching the bumper core to the frame (Fig.L). Lift up to release the bumper core from its mounts (Fig.M). Set it aside for now.





# BASEPLATE KIT INSTALLATION INSTRUCTIONS

**KIT# 523195-5**

02/03/22  
KS

ROADMASTER, Inc. 6110 NE 127th Ave. Vancouver, WA 98682 360-896-0407 fax 360-735-9300 www.roadmasterinc.com

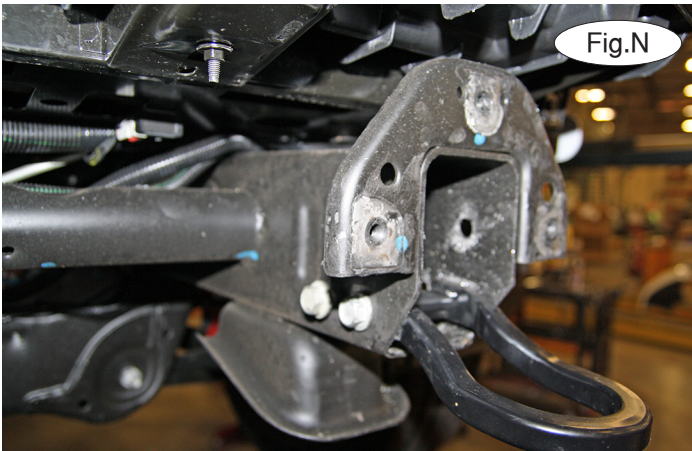


Fig.N



Fig.O

10. On each side, remove one 18mm (head) bolt and nut, and one 18mm (head) bolt attaching the tow hook to the frame rail (Fig.N). The tow hooks will not be reinstalled. *Note:* retain the tow hooks and their hardware for replacement in case the baseplate is ever removed from the vehicle.



Fig.P

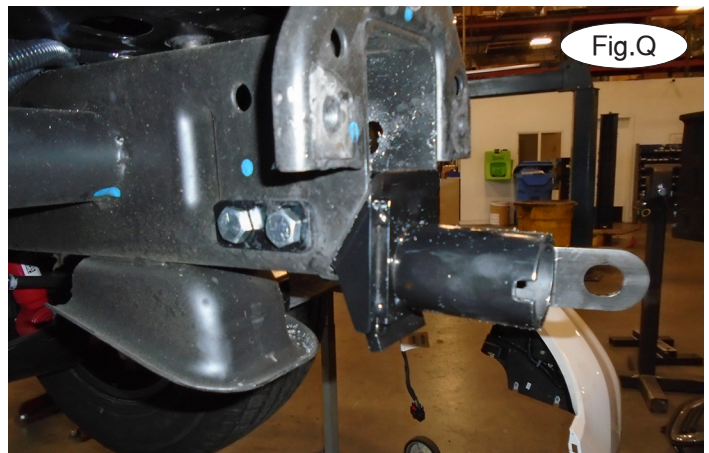


Fig.Q

11. Working on one side at a time, insert the main receiver brace into the frame rail, aligning the holes with the holes in the frame rail. Then, attach the main receiver brace to the bottom of the frame rail by bolting one of the supplied 5/8" x 2" bolts, lock washers and plate washers through the existing hole at the bottom of the frame and into the weld nut in the main receiver brace (Fig.O). *Note:* ensure proper alignment, as the bolts will receive Loctite® Red and will be torqued at the end of these instructions.

12. Using a 1/2" drill and the holes to the inside of the frame rail as a guide, drill through the holes (Fig.P).

13. On the inside of the frame rail, insert the two supplied 1/2" x 5" bolts through one of the 1/8" x 1 1/4" x 2 3/4" backing plates (with two 9/16" holes) by bolting through the inside frame rail, the baseplate, and the outside of the frame rail (Fig.Q). Then, using the drawing on page 1 as a reference, locate the side-specific safety cable mounting plate and place it over the two bolts you just installed and then finish with two 1/2" lock washers and 1/2" nuts (Fig.R). *Note:* Due to manufacturing variances, this hole may need to be enlarged.



Fig.R

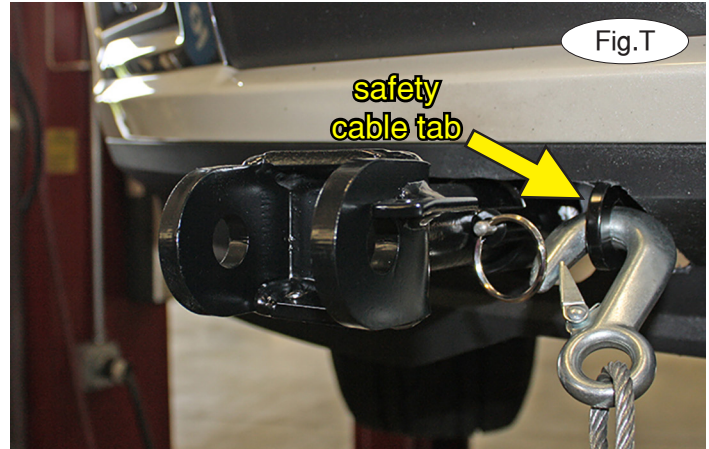


# BASEPLATE KIT INSTALLATION INSTRUCTIONS

**KIT# 523195-5**

02/03/22  
KS

ROADMASTER, Inc. 6110 NE 127th Ave. Vancouver, WA 98682 360-896-0407 fax 360-735-9300 www.roadmasterinc.com



14. Repeat steps 11 through 13 for the other side of the vehicle. Then, trim the fascia using Figure S as a guide for trimming.
15. Referring to the drawing on page 1, locate the Brakeaway mount. Place it under the head of the inner bumper core mounting bolt on the passenger side of the vehicle. The Brakeaway switch, when correctly mounted, should align with the safety cable tab.
16. Reinstall the fascia, reversing steps 1 through 9.
17. On each side, insert the removable front arm into the front receiver 90 degrees from its final towing position, depressing the spring-loaded pin against the receiver. Twist back 90 degrees until the spring-loaded pin snaps into place in the notch on the receiver, locking the arm into place in its final towing position. **Please note: It is the owner's responsibility to ensure the locking of the pins before towing. Otherwise, failure of the towing system will result.**
18. Install the tow bar to the mounting bracket according to the manufacturer's instructions.

### IMPORTANT!

**Safety cables are required by law. When towing, connect safety cables to the safety cable tabs illustrated in Figure T. Make certain there is adequate slack in the cables to allow a full turning radius; otherwise, damage will result. If necessary, longer cables or cable extensions are available.**

### BOLT TORQUE REQUIREMENTS

Note: The torque values represented below are intended as general guidelines. Torque requirements for specific applications may vary. Roadmaster does not warrant this information to be accurate for all applications and disclaims all liability for any claims or damages which may result from its use.

#### STANDARD BOLTS

Thread Size	Grade	Torque
5/16-18	5	13 ft./lb.
3/8-16	5	23 ft./lb.
7/16-14	5	37 ft./lb.
1/2-13	5	57 ft./lb.
5/8-11	5	112 ft./lb.

#### METRIC BOLTS

Thread Size	Grade	Torque
6mm-1.0	8.8	6 ft./lb.
8mm-1.0	8.8	18 ft./lb.
8mm-1.25	8.8	16 ft./lb.
10mm-1.25	8.8	36 ft./lb.
10mm-1.5	8.8	31 ft./lb.

#### METRIC BOLTS

Thread Size	Grade	Torque
12mm-1.25	8.8	64 ft./lb.
12mm-1.5	8.8	60 ft./lb.
12mm-1.75	8.8	55 ft./lb.
14mm-2.0	8.8	88 ft./lb.

All illustrations and specifications contained herein are based on the latest information available at the time of publication approval. ROADMASTER, INC. reserves the right to make changes at any time without notice in material, specification and models or to discontinue models.