



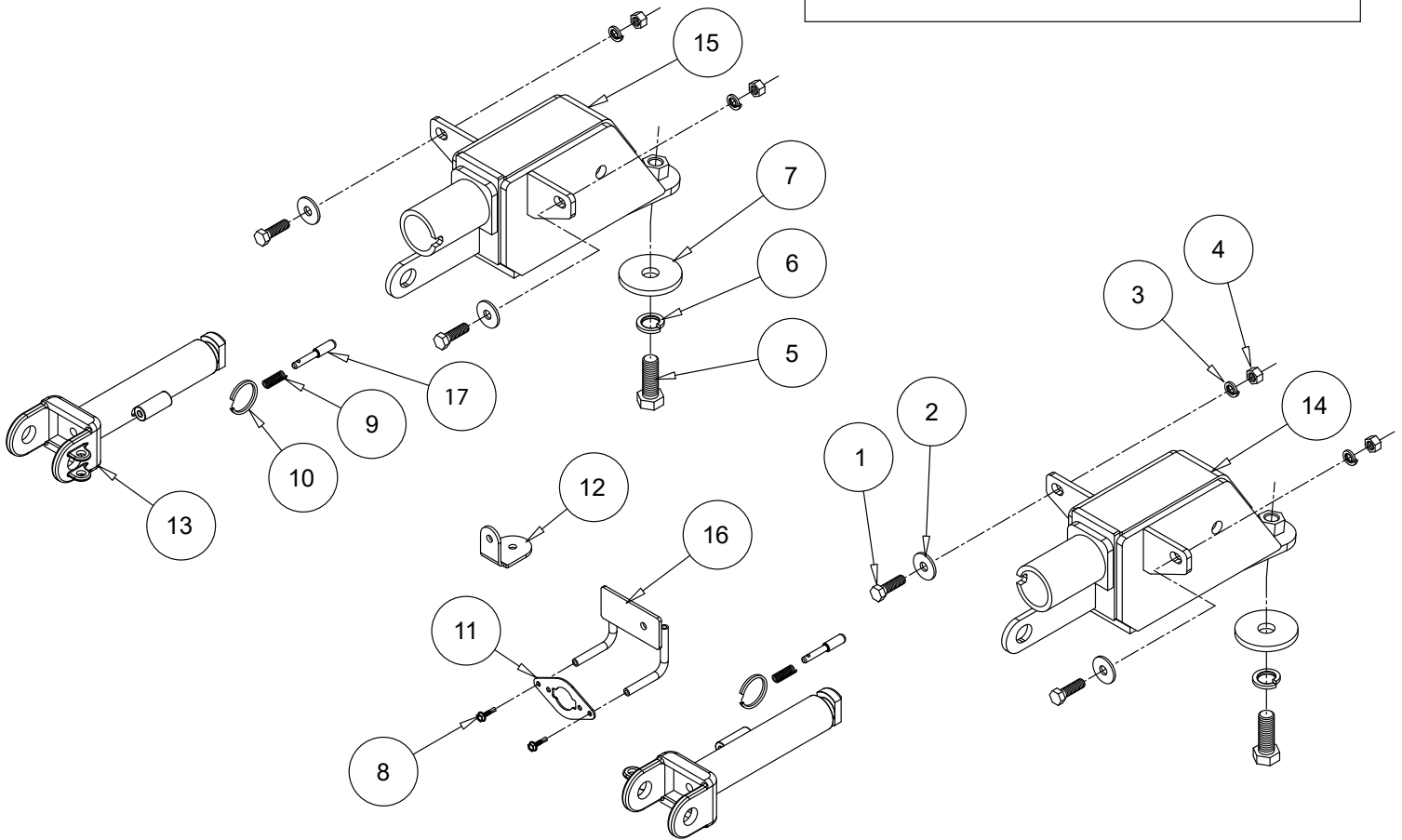
BASEPLATE KIT INSTALLATION INSTRUCTIONS

KIT# 523205-5

10/26/23
KS

ROADMASTER, Inc. 6110 NE 127th Ave. Vancouver, WA 98682 360-896-0407 fax 360-735-9300 www.roadmasterinc.com

Important
Note: This baseplate will not accommodate the Guardian rock shield, some models of the Tow Defender, or the StowMaster and StowMaster All Terrain tow bars.



ITEM	QTY	NAME	PART#
1.....	4.....	3/8" x 1 1/4" BOLT	350056-00
2.....	4.....	3/8" FLAT WASHER	350304-00
3.....	4.....	3/8" LOCK WASHER	350305-00
4.....	4.....	3/8" NUT	350254-00
5.....	2.....	5/8" x 1 3/4" BOLT	350149-00
6.....	2.....	5/8" LOCK WASHER	350313-00
7.....	2.....	5/8" PLATE WASHER	350352-00
8.....	2.....	#10 x 3/4" SELF DRILLING SCREW	350247-35
9.....	2.....	SPRING.....	200146-00
10.....	2.....	RING.....	350520-00
11.....	1.....	WIRE PLUG PLATE	A003801
12.....	1.....	BRAKEAWAY BRACKET	B003858
13.....	2.....	ARM.....	C002383
14.....	1.....	DRIVER SIDE RECEIVER	C003518
15.....	1.....	PASSENGER SIDE RECEIVER.....	C003519
16.....	1.....	WIRE PLUG BRACKET	C003520
17.....	2.....	LOCK PIN.....	A000008



BASEPLATE KIT INSTALLATION INSTRUCTIONS

KIT# 523205-5

10/26/23
KS

ROADMASTER, Inc. 6110 NE 127th Ave. Vancouver, WA 98682 360-896-0407 fax 360-735-9300 www.roadmasterinc.com

This is one of our direct-connect baseplates, which allows the visible front portion of the bracket to be easily removed from the front of the vehicle (Fig.A and Fig.B).

The baseplate mounts to the frame of the vehicle and consists of two side-specific braces, two removable front braces, and a hardware pack.

Before starting the installation, lay out the kit components in order, as they will be used. This will give you a visual idea of how the components work, and will also confirm that everything is present and accounted for.



IMPORTANT: All baseplates **must** be assembled with all the bolts left loose for final adjustment and positioning (before tightening) unless otherwise instructed. All bolts **must** be torqued for proper strength. If more than one bolt is used per fastening point, the diagram may only show one. Use flat washers over all slotted holes and lock washers on all fasteners.

WARNING

Failure to heed these warnings or follow the installation instructions may result in a voided warranty, loss of towed vehicle, personal injury or death.

- Do not weld or modify this baseplate or its components. Welding or modification will void the warranty.
- Do not use this document as a basis to design/fabricate a baseplate, as it may not show all parts or structural components.
- We strongly recommend professional installation.
- If the towed vehicle has been in an accident, it must be properly repaired before attaching the baseplate. Do not install the baseplate if any structural frame damage is found.
- The installer must use all bolts and parts supplied. If running changes were made by the vehicle manufacturer after this kit was designed, some bolts or other fasteners may no longer be the correct size. It is the installer's responsibility to verify this kit is securely fastened to the vehicle.
- Use Loctite® Red on all bolts used to secure this baseplate. Torque all bolts to the specifications found at the end of these instructions. Do not over-torque the bolts or failure may occur.
- The installer must inspect the baseplate to ensure adequate clearance, particularly around hoses, air conditioner lines, radiators, etc. or non-warranty failure may result.
- Roadmaster manufactures many styles of baseplates. If your baseplate has removable arms, they must be removed before driving the vehicle, unless the arms can be pinned or padlocked in place. If not secured, the arms could vibrate out.
- Some motorhome chassis have such a tight turning radius that you can damage your motorhome, towed vehicle, tow bar or baseplate while turning sharply. Before getting on the road, test your turning radius in an empty parking lot. Turning too sharply could result in non-warranty damage to your towing system, motorhome and/or towed vehicle.
- Do not back up with the towed vehicle attached or non-warranty damage will occur to your towing system or vehicles.
- The safety cables must connect the towing vehicle to the towed vehicle frame to frame, with the cables crossed, with enough slack for sharp turns. See cable instructions for proper routing. Failure to do so will result in non-warranty damage and/or the loss of the towed vehicle.
- This kit is designed for use with ROADMASTER tow bars and ROADMASTER adapters only. Using this kit with other brands, without an approved ROADMASTER adapter, may result in non-warranty damage or injury.
- Receiver extensions and out-of-level towing situations of 3 inches or more. This can cause the system to swing much higher and lower, causing excessive strain on the tow bar, baseplate and frame. That can cause the towing system to fail, causing property damage, personal injury or even death. If you must use a receiver extension or drop hitch to tow, it will reduce your receiver's weight capacity by 1/3 to avoid damaging your system. Never use more than one extension and/or drop hitch, as this will void your warranty.
- Every 3,000 miles, the owner must inspect all mounting points for cracks or fatigue, and check the fasteners for proper torque, according to the bolt torque requirements chart on the last page of these instructions.
- The owner must follow the vehicle manufacturer's instructions to prepare the vehicle for towing. Failure to do so may cause severe damage to the vehicle.
- This baseplate is only warranted for the original installation. Installing a used baseplate on another vehicle is not recommended and will void the warranty.

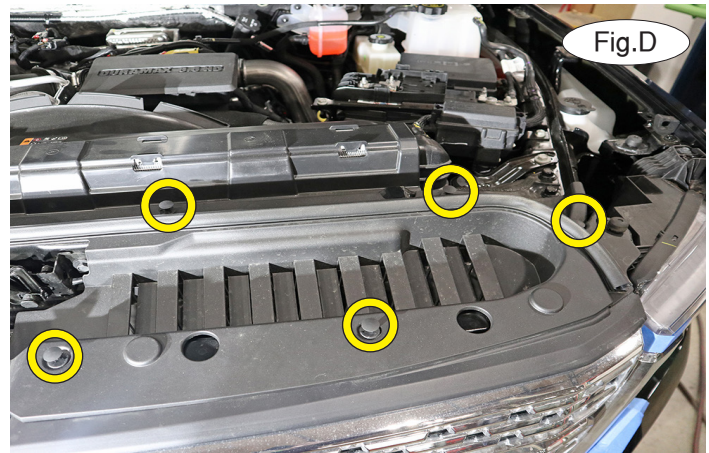
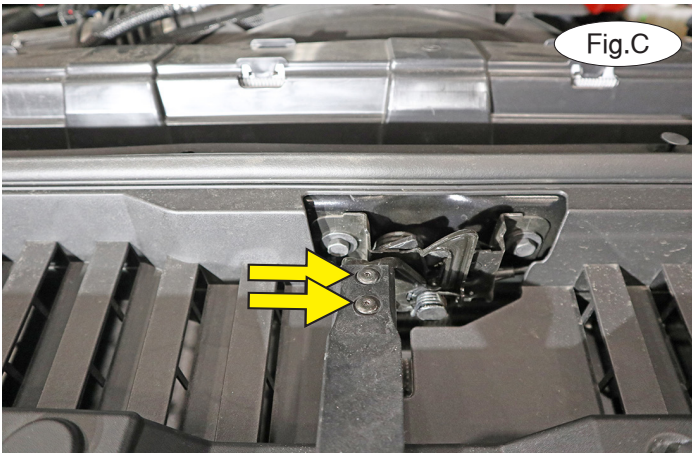


BASEPLATE KIT INSTALLATION INSTRUCTIONS

KIT# 523205-5

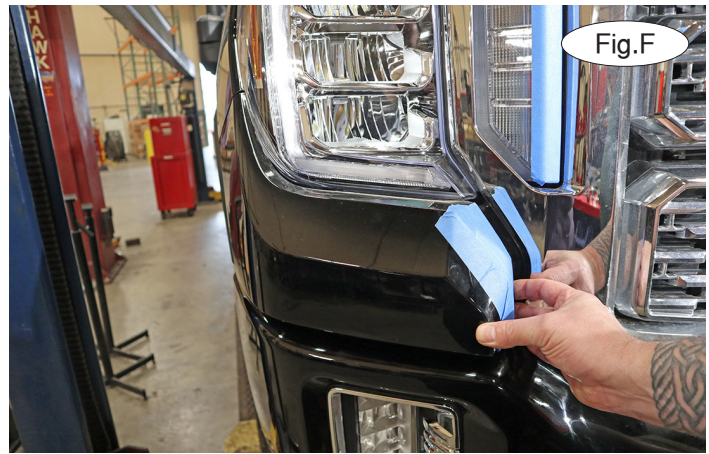
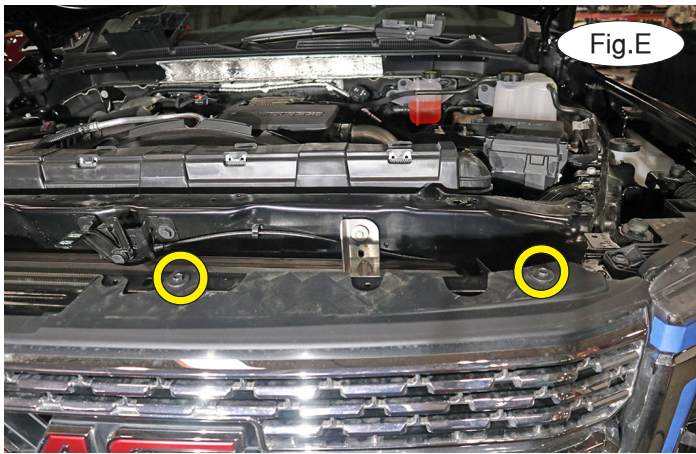
10/26/23
KS

ROADMASTER, Inc. 6110 NE 127th Ave. Vancouver, WA 98682 360-896-0407 fax 360-735-9300 www.roadmasterinc.com



1. **Important:** please use all supplied bolts and parts and read all instructions carefully before beginning this installation. The majority of questions you may have can be answered within the text, and proper installation will ensure safe and secure travel. Remove two T15 screws attaching the hood release handle to the latch (Fig.C). Pull it toward the front of the vehicle to remove it.

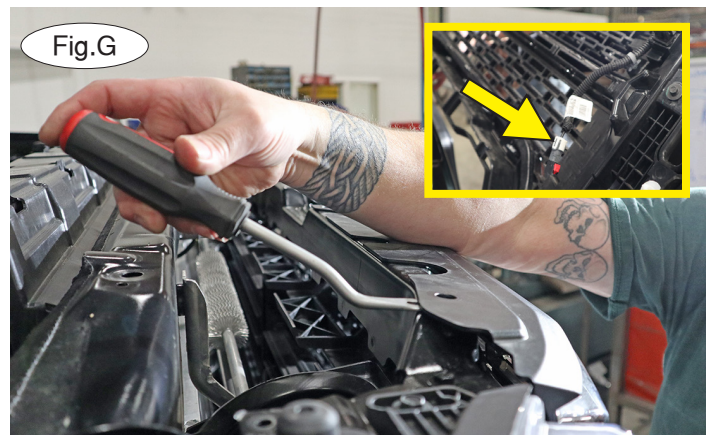
2. On each side, remove five plastic fasteners attaching the drip pan to the upper grille and radiator support (Fig.D). Lift it straight up to remove it and set it aside for now.



3. On each side, remove two 10mm bolts attaching the top of the upper grille to the radiator support (Fig.E).

4. On each side, pull out on the body-colored plastic panel to release the first clip attaching it to the upper grille (Fig.F).

5. Starting on one side, pull up on the top corner of the fascia to release four clips attaching the grille to the upper radiator support, working your way across the front of the vehicle (Fig.G). Pull toward the front of the vehicle to release the locking clips and disconnect the front camera, if the vehicle is so equipped (Fig.G – inset). **IMPORTANT! Do not turn the vehicle on for any reason once the grille has been removed, or it could trigger a check engine light.**



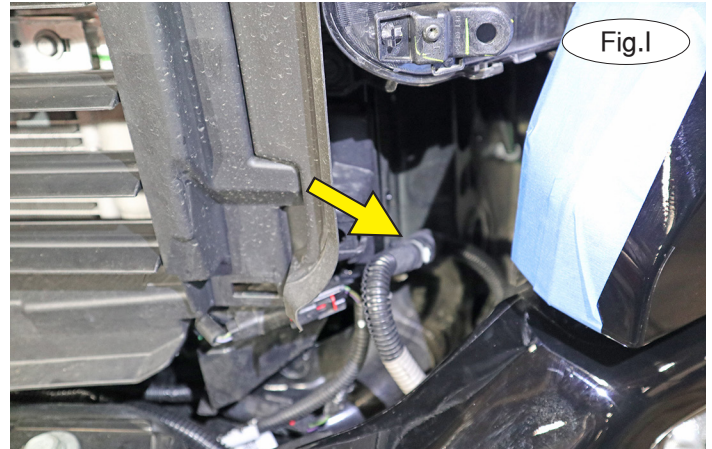
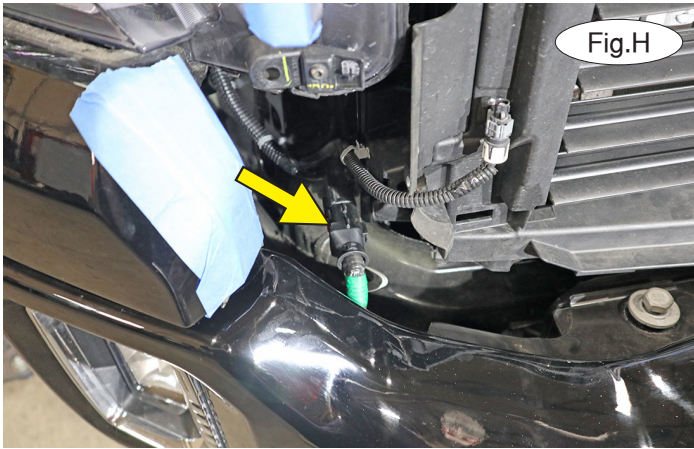


BASEPLATE KIT INSTALLATION INSTRUCTIONS

KIT# 523205-5

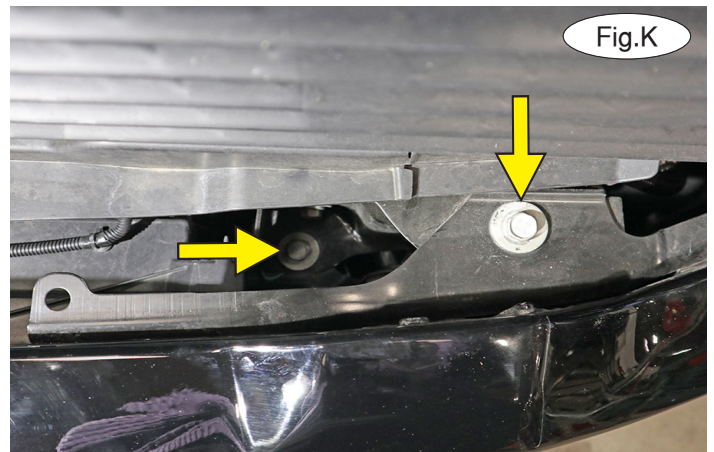
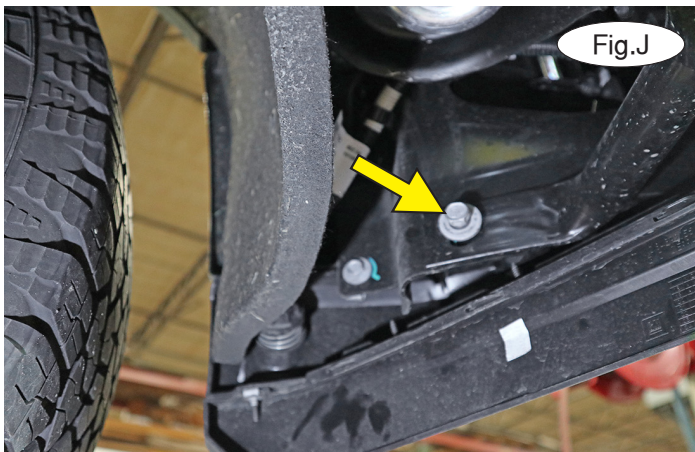
10/26/23
KS

ROADMASTER, Inc. 6110 NE 127th Ave. Vancouver, WA 98682 360-896-0407 fax 360-735-9300 www.roadmasterinc.com



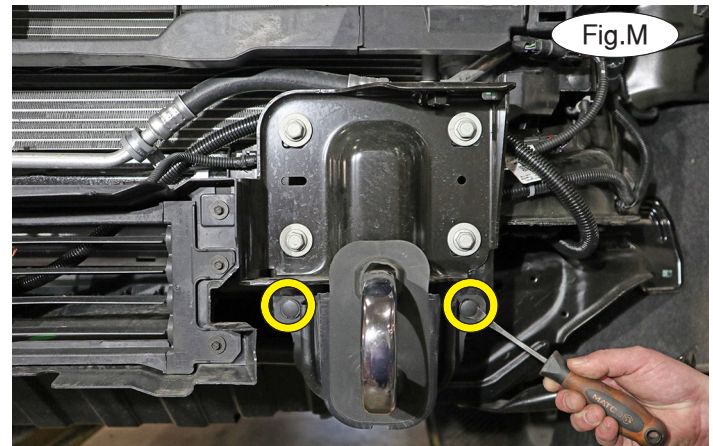
6. On the passenger side, disconnect the electrical harness (Fig.H) and if the vehicle is so equipped, disconnect the engine block heater harness on the driver's side (Fig.I).

7. On each side, remove one 15mm bolt attaching the corner of the bumper to the frame stiffener (Fig.J).



8. On each side, remove two 18mm bolts attaching the bumper to the frame (Fig.K). *Note:* You will need an extension for the lower bolt. Pull the bumper toward the front of the vehicle to remove it (Fig.L) and set it aside for now.

9. On each side, remove two plastic fasteners attaching the tow hook cover to the frame (Fig.M). Then, use an 18mm socket and wrench to remove the tow hook bolts (Fig.N – next page). Pull straight out to remove the tow hooks and covers. They will not be replaced. *Note:* Retain the tow hooks for replacement in case the baseplate is ever removed. The hardware will be used in a later step.



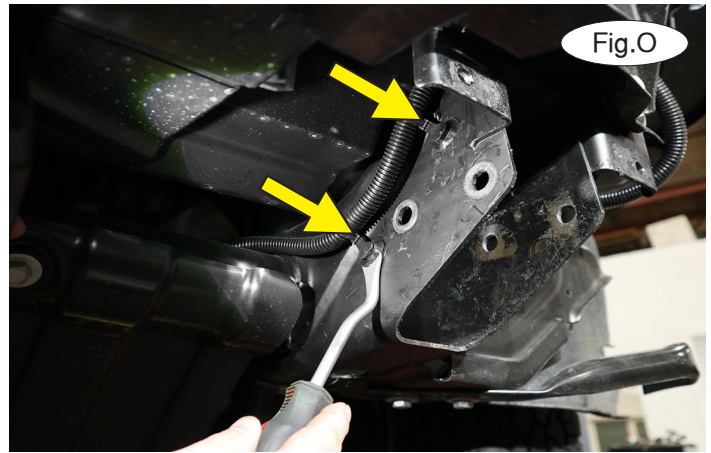
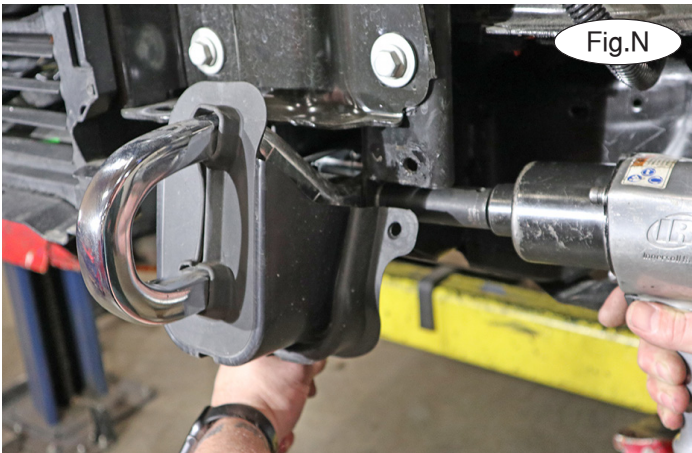


BASEPLATE KIT INSTALLATION INSTRUCTIONS

KIT# 523205-5

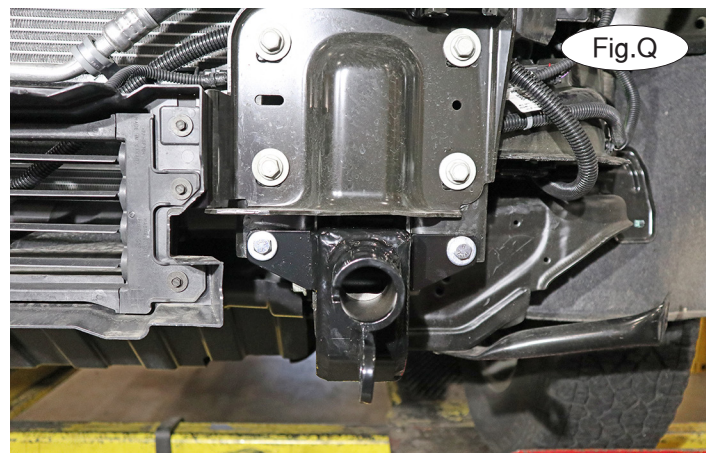
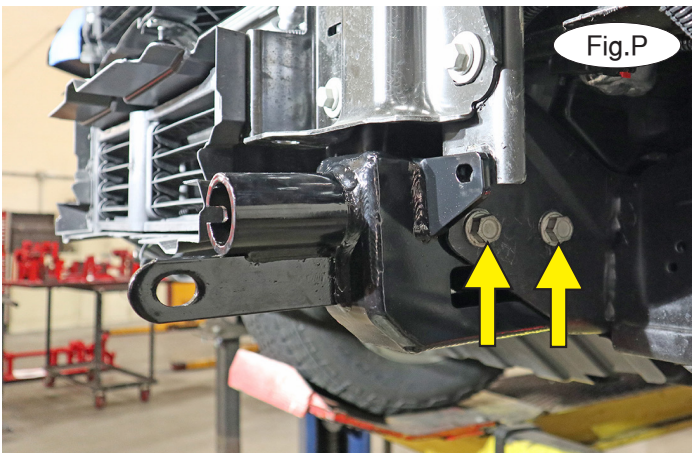
10/26/23
KS

ROADMASTER, Inc. 6110 NE 127th Ave. Vancouver, WA 98682 360-896-0407 fax 360-735-9300 www.roadmasterinc.com



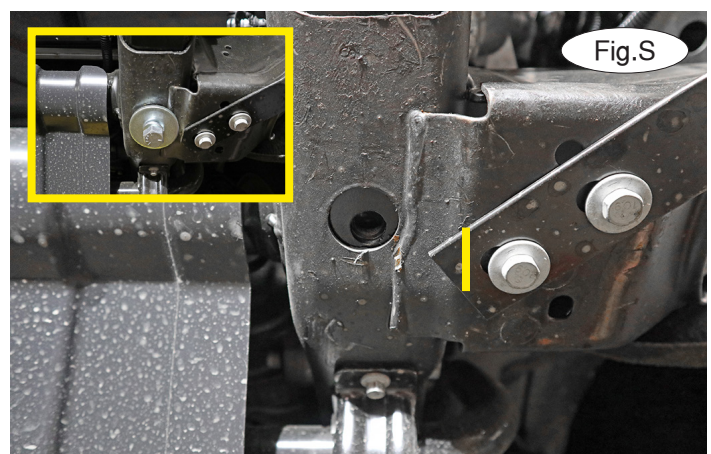
10. Working on the driver's side only, release two plastic clips attaching the wiring harness to the frame (Fig.O).

11. Continuing on the driver's side, use the drawing on page 1 to locate the side specific brace. Slide it into the tow hook mount, aligning the holes with the mounts (Fig.P). Loosely replace the hardware from step 9.



12. Place two 3/8" flat washers over two 3/8" x 1 1/4" bolts and insert them through each of the top mounts. Finish with 3/8" lock washers and nuts (Fig.Q). *Note:* Due to manufacturing variances, you may need to use a 13/32" drill bit to enlarge the existing holes. Hand tighten the bolts for now.

13. Place a 5/8" lock washer and 5/8" plate washer over a 5/8" x 1 3/4" bolt and finger tighten it into the nut welded into the side-specific brace (Fig.R). *Note:* You may need to trim the inside corner of the frame stiffener to allow the plate washer to sit flush on the bottom of the frame rail (Fig.S and Fig.S – inset).



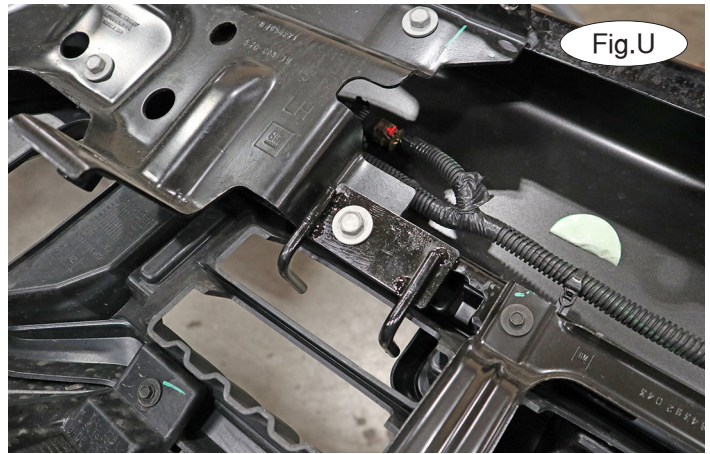
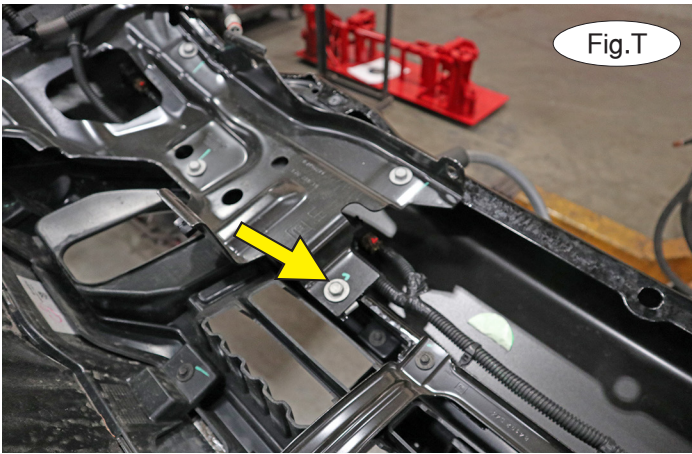


BASEPLATE KIT INSTALLATION INSTRUCTIONS

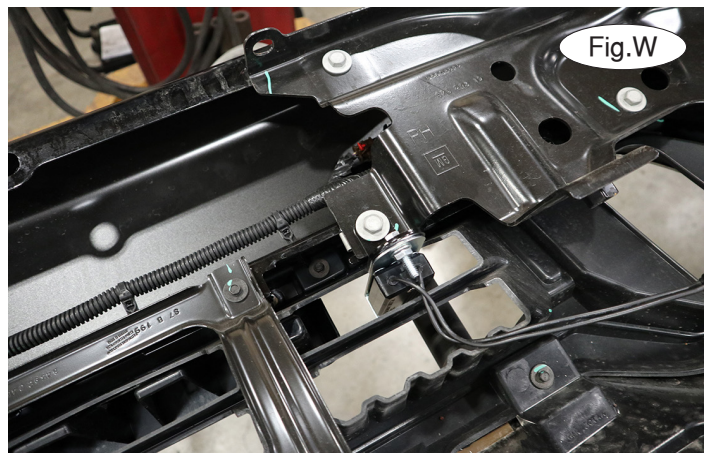
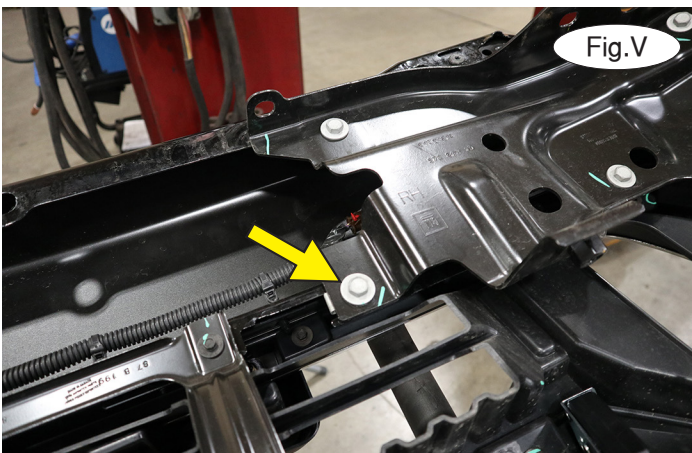
KIT# 523205-5

10/26/23
KS

ROADMASTER, Inc. 6110 NE 127th Ave. Vancouver, WA 98682 360-896-0407 fax 360-735-9300 www.roadmasterinc.com



14. Tighten the bolts in this order: 3/8", 18mm factory hardware, and then 5/8".
15. Repeat steps 11 through 14 for the passenger side of the vehicle. *Note:* Step 10 only applies to the driver's side.
16. If you choose to use our optional wiring plug rod attachment, remove one 13mm bolt on the driver's side on the back of the bumper (Fig.T) and place the attachment over the mount and replace the bolt (Fig.U).



17. If you are installing a supplemental braking system and are using our optional Brakeaway switch, attach it to the provided mount and use the passenger side 13mm bolt (Fig.V) to mount it (Fig.W).
18. Replace the bumper, reversing steps 1 through 8.
19. Figure X shows the completed installation.





BASEPLATE KIT INSTALLATION INSTRUCTIONS

KIT# 523205-5

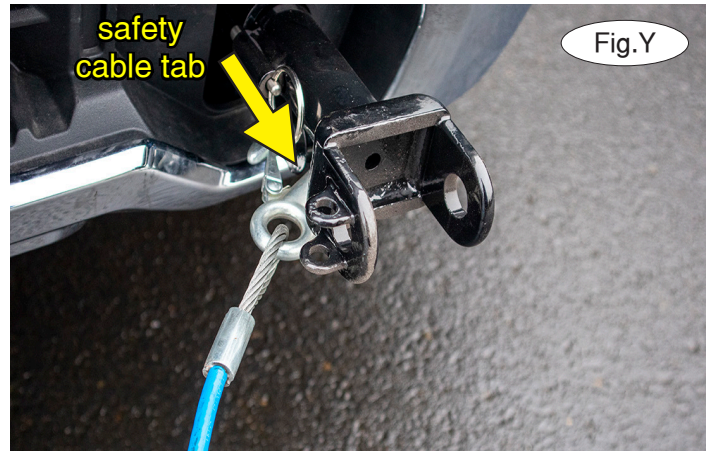
10/26/23
KS

ROADMASTER, Inc. 6110 NE 127th Ave. Vancouver, WA 98682 360-896-0407 fax 360-735-9300 www.roadmasterinc.com

20. On each side, insert the removable front arm into the front receiver 90 degrees from its final towing position, depressing the spring-loaded pin against the receiver. Twist back 90 degrees until the spring-loaded pin snaps into place in the notch on the receiver, locking the arm into place in its final towing position.

Please note: it is the owner's responsibility to ensure the locking of the pins before towing. Otherwise, failure of the towing system will result.

21. Install the tow bar to the mounting bracket according to the manufacturer's instructions.



IMPORTANT!

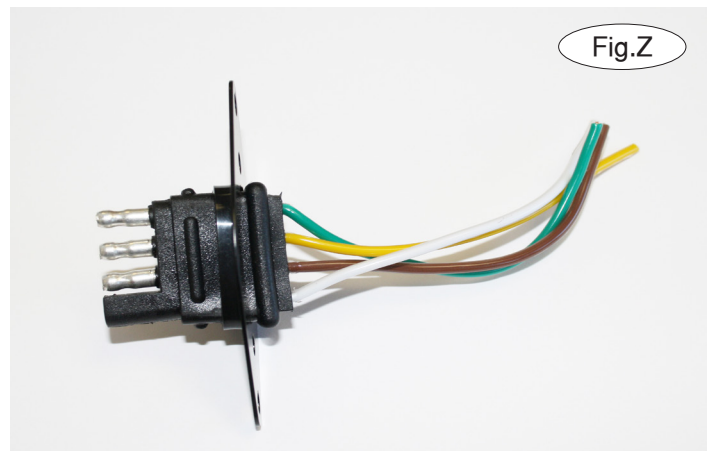
Safety cables are required by law. When towing, connect safety cables to the safety cable tabs illustrated in Figure Y. Make certain there is adequate slack in the cables to allow a full turning radius; otherwise, damage will result. If necessary, longer cables or cable extensions are available.

Three options for attaching the wiring plug to the main receiver brace

For six-wire plugs: use the two supplied 3/4" self-tapping screws to attach the electrical plug directly to the rods on the front of the main receiver brace.

For four-wire round plugs: attach to the plug mounting plate and then use the two supplied 3/4" self-tapping screws to attach the mounting plate to the rods on the front of the main receiver brace.

For four-wire flat plugs: place the plug through the mounting plug plate, and then secure it using the supplied zip tie on the front of the plug (Fig.Z). Use the two supplied 3/4" self-tapping screws to attach the mounting plate to the rods on the front of the main receiver brace.



BOLT TORQUE REQUIREMENTS

Note: The torque values represented below are intended as general guidelines. Torque requirements for specific applications may vary. Roadmaster does not warrant this information to be accurate for all applications and disclaims all liability for any claims or damages which may result from its use.

STANDARD BOLTS

Thread Size	Grade	Torque
5/16-18	5	13 ft./lb.
3/8-16	5	23 ft./lb.
7/16-14	5	37 ft./lb.
1/2-13	5	57 ft./lb.
5/8-11	5	112 ft./lb.

METRIC BOLTS

Thread Size	Grade	Torque
6mm-1.0	8.8	6 ft./lb.
8mm-1.0	8.8	18 ft./lb.
8mm-1.25	8.8	16 ft./lb.
10mm-1.25	8.8	36 ft./lb.
10mm-1.5	8.8	31 ft./lb.

METRIC BOLTS

Thread Size	Grade	Torque
12mm-1.25	8.8	64 ft./lb.
12mm-1.5	8.8	60 ft./lb.
12mm-1.75	8.8	55 ft./lb.
14mm-2.0	8.8	88 ft./lb.