



# BASEPLATE KIT INSTALLATION INSTRUCTIONS

**KIT# 523212-5**

10/26/23  
KS

ROADMASTER, Inc. 6110 NE 127th Ave. Vancouver, WA 98682 360-896-0407 fax 360-735-9300 www.roadmasterinc.com

Ratchet and extension  
7, 10, 13, 15, and 18mm sockets  
15/16" socket  
18mm wrench

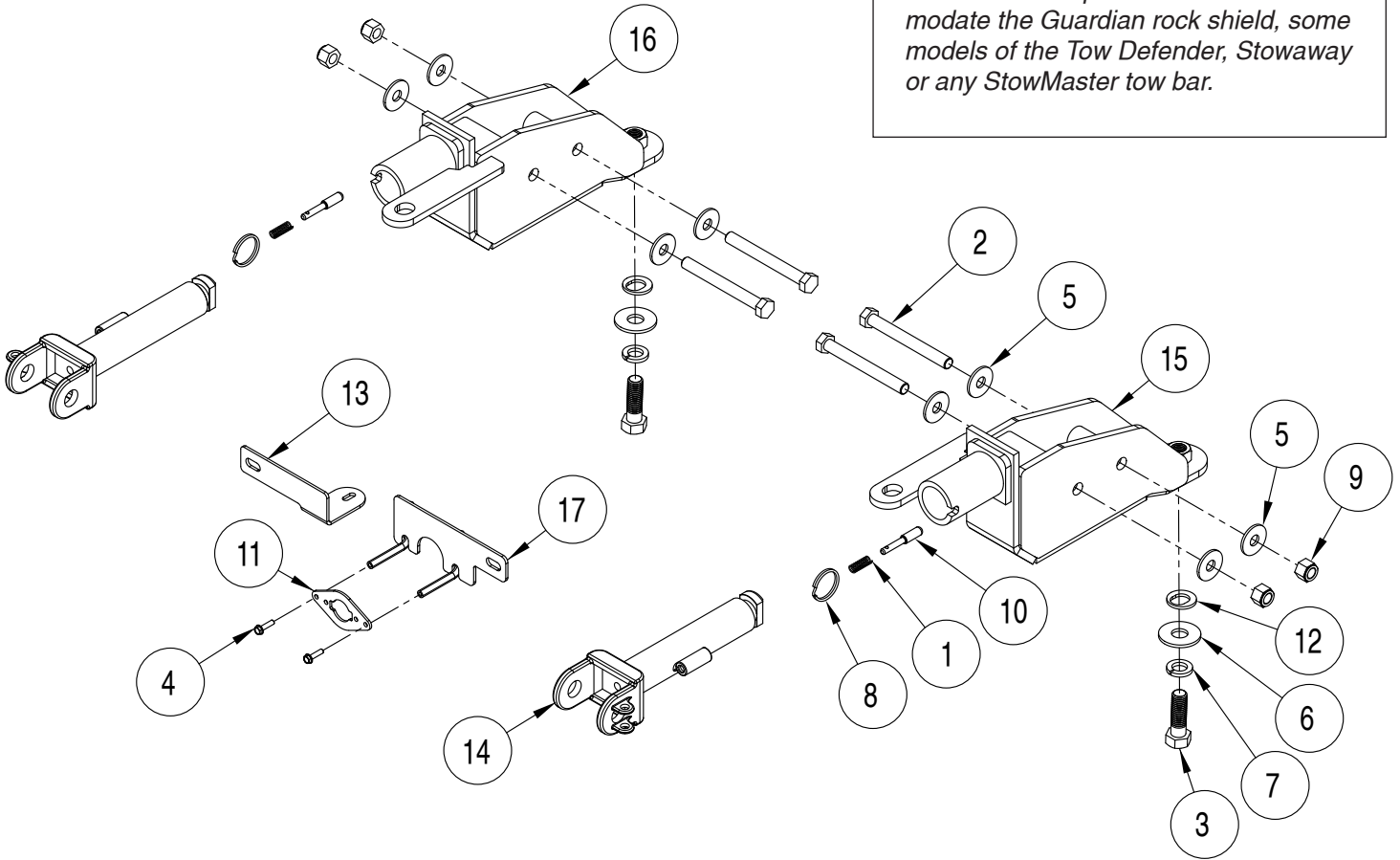
### Recommended Tools

Panel tool  
T15 Torx screwdriver or bit

Reciprocating saw  
Two soft, clean rags  
Torque wrench  
Loctite© Red or Blue

### Important

Note: This baseplate will not accommodate the Guardian rock shield, some models of the Tow Defender, Stowaway or any StowMaster tow bar.



ITEM	QTY	DESCRIPTION	PART NUMBER
1	2	SPRING	200146-00
2	4	1/2-20 x 4 1/2" BOLT - GRADE 8	350106-20
3	2	5/8" x 2" BOLT	350150-00
4	2	#10 x 3/4" SELF DRILLING SCREW	350247-35
5	8	1/2" FLAT WASHER	350308-00
6	2	5/8" FLAT WASHER	350312-00
7	2	5/8" LOCK WASHER	350313-00
8	2	RING	350520-00
9	4	1/2-20 NYLON INSERT LOCK NUT - GRADE 8	350736-00
10	2	LOCK PIN	A000008
11	1	WIRE PLUG PLATE	A003801
12	2	SPACER	A006419
13	1	BRAKEAWAY MOUNT	B003964
14	2	ARM	C002383
15	1	DRIVER SIDE RECEIVER	C003601
16	1	PASSENGER SIDE RECEIVER	C003602
17	1	WIRE PLUG BRACKET	C003603



# BASEPLATE KIT INSTALLATION INSTRUCTIONS

**KIT# 523212-5**

10/26/23  
KS

ROADMASTER, Inc. 6110 NE 127th Ave. Vancouver, WA 98682 360-896-0407 fax 360-735-9300 www.roadmasterinc.com

This is one of our direct-connect baseplate kits, which allows the visible front portion of the bracket to be easily removed from the front of the vehicle (Fig.A and Fig.B). The kit consists of the two main receiver braces, two removable front braces, and a hardware pack. The main receiver braces mount to the frame rails, and the removable front braces install in the main receiver brace.

Before starting the installation, lay out the kit components in order, as they will be used. This will give you a visual idea of how the components work, and will also confirm that everything is present and accounted for.



**IMPORTANT:** All baseplates **must** be assembled with all the bolts left loose for final adjustment and positioning (before tightening) unless otherwise instructed. All bolts **must** be torqued for proper strength. If more than one bolt is used per fastening point, the diagram may only show one. Use flat washers over all slotted holes and lock washers on all fasteners.

## WARNING

Failure to heed these warnings or follow the installation instructions may result in a voided warranty, loss of towed vehicle, personal injury or death.

- Do not weld or modify this baseplate or its components. Welding or modification will void the warranty.
- Do not use this document as a basis to design/fabricate a baseplate, as it may not show all parts or structural components.
- We strongly recommend professional installation.
- If the towed vehicle has been in an accident, it must be properly repaired before attaching the baseplate. Do not install the baseplate if any structural frame damage is found.
- The installer must use all bolts and parts supplied. If running changes were made by the vehicle manufacturer after this kit was designed, some bolts or other fasteners may no longer be the correct size. It is the installer's responsibility to verify this kit is securely fastened to the vehicle.
- Use Loctite® Red on all bolts used to secure this baseplate. Torque all bolts to the specifications found at the end of these instructions. Do not over-torque the bolts or failure may occur.
- The installer must inspect the baseplate to ensure adequate clearance, particularly around hoses, air conditioner lines, radiators, etc. or non-warranty failure may result.
- Roadmaster manufactures many styles of baseplates. If your baseplate has removable arms, they must be removed before driving the vehicle, unless the arms can be pinned or padlocked in place. If not secured, the arms could vibrate out.
- Some motorhome chassis have such a tight turning radius that you can damage your motorhome, towed vehicle, tow bar or baseplate while turning sharply. Before getting on the road, test your turning radius in an empty parking lot. Turning too sharply could result in non-warranty damage to your towing system, motorhome and/or towed vehicle.
- Do not back up with the towed vehicle attached or non-warranty damage will occur to your towing system or vehicles.
- The safety cables must connect the towing vehicle to the towed vehicle frame to frame, with the cables crossed, with enough slack for sharp turns. See cable instructions for proper routing. Failure to do so will result in non-warranty damage and/or the loss of the towed vehicle.
- This kit is designed for use with ROADMASTER tow bars and ROADMASTER adapters only. Using this kit with other brands, without an approved ROADMASTER adapter, may result in non-warranty damage or injury.
- Receiver extensions and out-of-level towing situations of 3 inches or more. This can cause the system to swing much higher and lower, causing excessive strain on the tow bar, baseplate and frame. That can cause the towing system to fail, causing property damage, personal injury or even death. If you must use a receiver extension or drop hitch to tow, it will reduce your receiver's weight capacity by 1/3 to avoid damaging your system. Never use more than one extension and/or drop hitch, as this will void your warranty.
- Every 3,000 miles, the owner must inspect all mounting points for cracks or fatigue, and check the fasteners for proper torque, according to the bolt torque requirements chart on the last page of these instructions.
- The owner must follow the vehicle manufacturer's instructions to prepare the vehicle for towing. Failure to do so may cause severe damage to the vehicle.
- This baseplate is only warranted for the original installation. Installing a used baseplate on another vehicle is not recommended and will void the warranty.

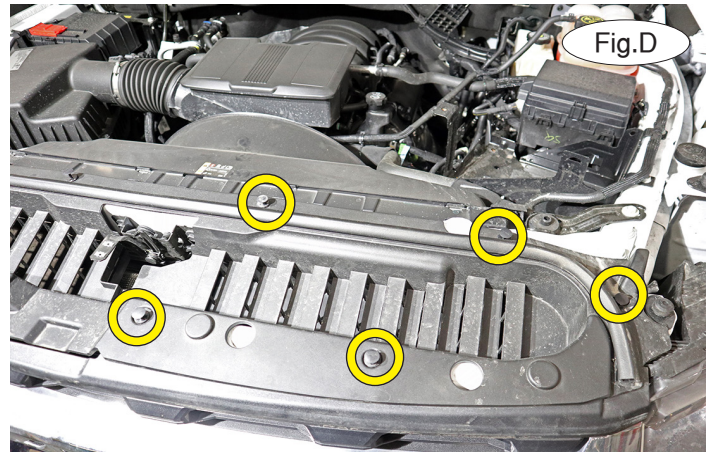
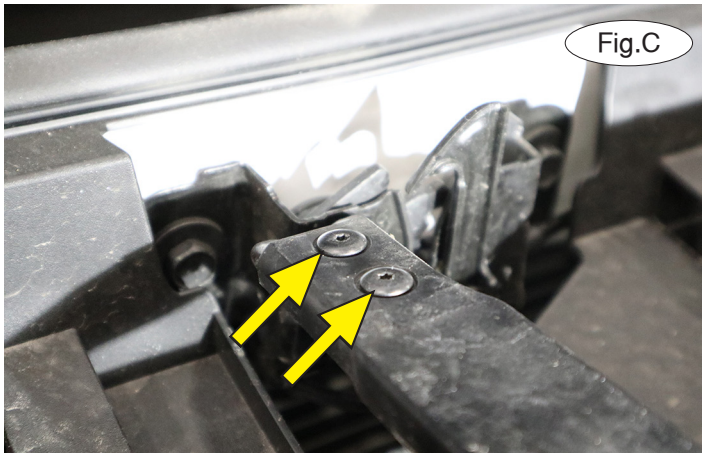


# BASEPLATE KIT INSTALLATION INSTRUCTIONS

**KIT# 523212-5**

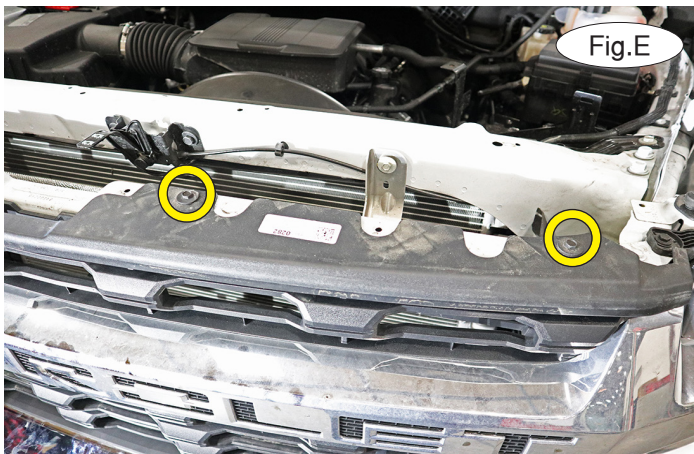
10/26/23  
KS

ROADMASTER, Inc. 6110 NE 127th Ave. Vancouver, WA 98682 360-896-0407 fax 360-735-9300 www.roadmasterinc.com

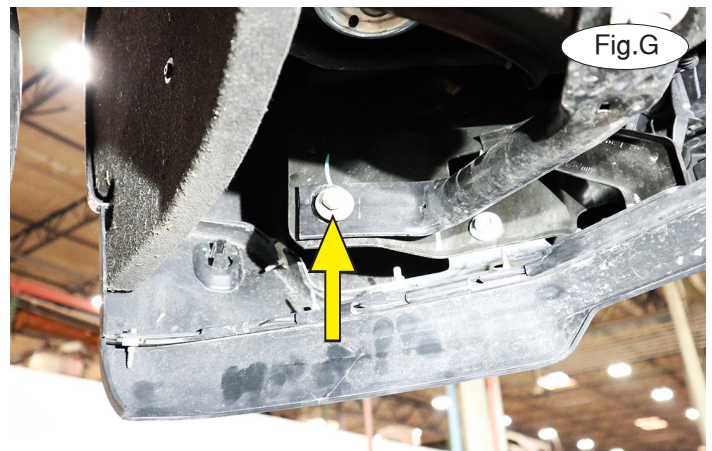


**Important: Please use all supplied bolts and parts and read all instructions carefully before beginning this installation. The majority of questions you may have can be answered within the text, and proper installation will ensure safe and secure travel.**

1. Remove two T15 Torx screws attaching the hood release handle to the latch (Fig.C). Slide it toward the front of the vehicle to temporarily remove it.
2. Remove nine plastic fasteners attaching the filler panel to the core support. Figure D shows the five on the driver's side; there are four on the passenger side. Lift straight up to remove the filler panel and set it aside for now.



3. On each side, remove two 10mm bolts attaching the top of the grille to the core support (Fig.E).
4. Working on the driver's side only, pull out on the fender trim until you release the yellow clip and expose the 7mm screw (Fig.F). Then, hold the fender trim piece away from the fender using a soft rag and remove the screw.
5. Repeat step 4 for the passenger side.
6. On each side, remove one 15mm bolt attaching the stiffener to the bumper (Fig.G – driver's side).



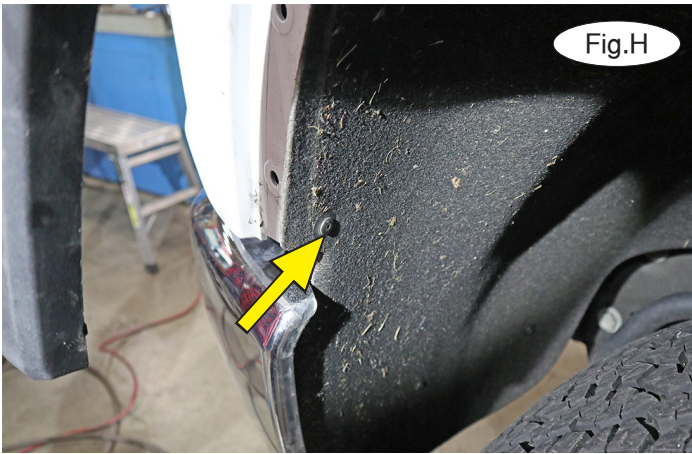


# BASEPLATE KIT INSTALLATION INSTRUCTIONS

**KIT# 523212-5**

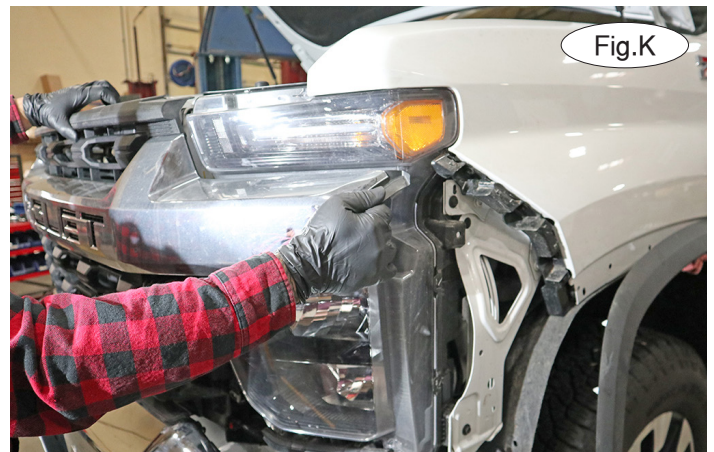
10/26/23  
KS

ROADMASTER, Inc. 6110 NE 127th Ave. Vancouver, WA 98682 360-896-0407 fax 360-735-9300 www.roadmasterinc.com



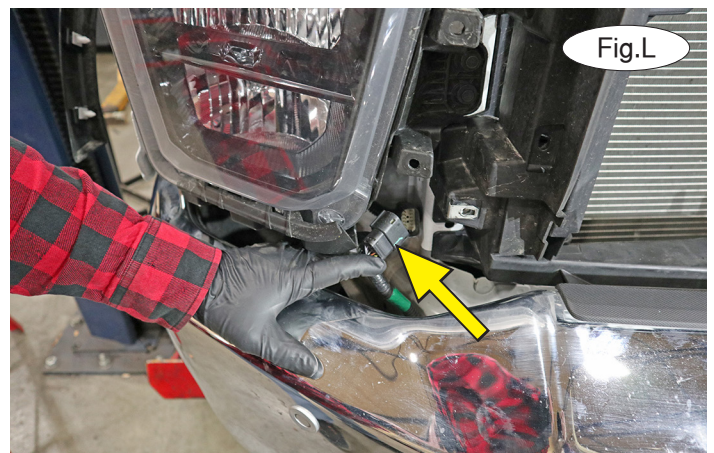
7. On each side, remove a T15 screw attaching the fender liner to the end cap (Fig.H). Then, pull out at the bottom of the seam and at the edge of the end cap between the end cap and grille to release the end cap (Fig.I). Set it aside for now.

8. On each side, remove one 10mm bolt attaching the bottom corner of the grille to the core support (Fig.J).



9. On each side, disconnect the wiring harnesses. Then, disconnect the front camera sprayer and the front camera, if the vehicle is so equipped. Now, lift up on the top and edge of the grille to remove it. Set it aside for now (Fig.K).

10. On the passenger side, disconnect the electrical harness (Fig.L). *Note: Diesel trucks may also have a block heater plug. It will be located in approximately the same location on the driver's side of the vehicle and will also need to be unplugged.*



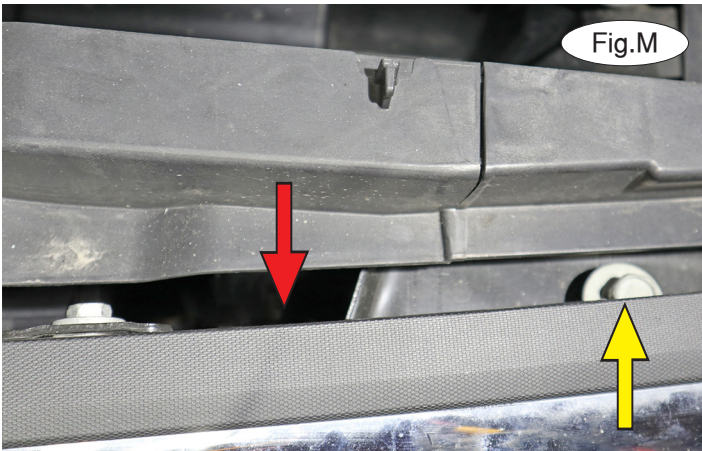


# BASEPLATE KIT INSTALLATION INSTRUCTIONS

**KIT# 523212-5**

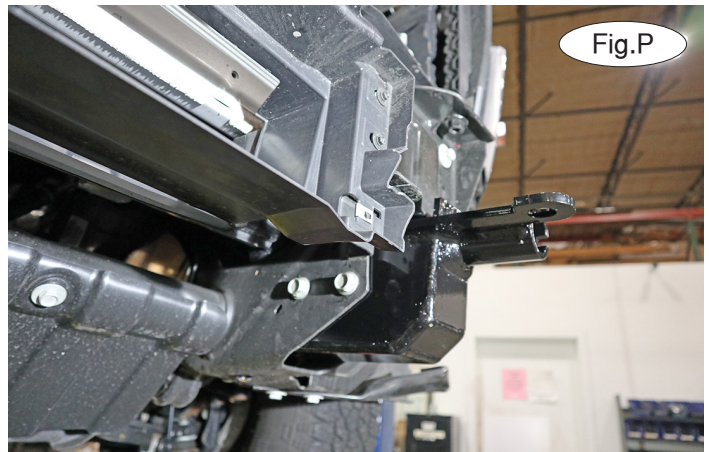
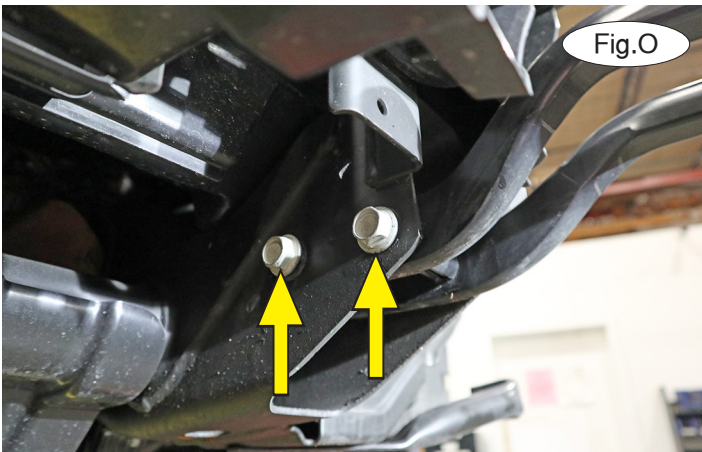
10/26/23  
KS

ROADMASTER, Inc. 6110 NE 127th Ave. Vancouver, WA 98682 360-896-0407 fax 360-735-9300 www.roadmasterinc.com

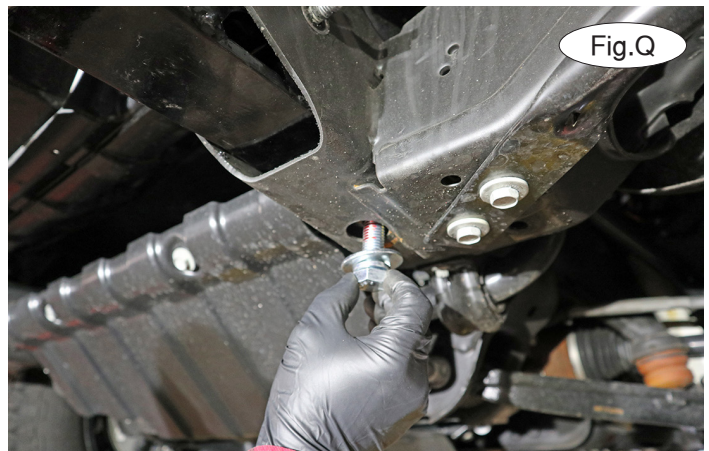


11. With the assistance of a second person, on each side, remove two 18mm bolts attaching the bumper to the frame. *Note:* You will need an extension to reach the lower one (Fig.M – red arrow denotes its approximate location). *Note:* It will be oriented the same as the top 18mm bolt (Fig.M – yellow arrow). Then, pull out on the bumper to remove it from its mounts (Fig.N – driver's side).

12. Working on the driver's side only, remove the two 18mm bolts and nuts attaching the tow hooks to the frame (Fig.O). Pull the tow hook straight out to remove it. It will not be replaced.



13. Using the drawing on page 1, locate the driver's side-specific brace. If you have the correct part, the safety cable tab will be to the inside of the brace. Slide it into the end of the frame, aligning the holes with the tow hook mounts. Then, install the two supplied  $\frac{1}{2}$ " x  $4\frac{1}{2}$ " bolts and  $\frac{1}{2}$ " flat washers, bolting through tow hook mounts and the side-specific brace, and finish each bolt with Loctite, a  $\frac{1}{2}$ " flat washer and a  $\frac{1}{2}$ " Nylock nut (Fig.P). Leave the bolts finger tight for now.



14. Place a  $\frac{5}{8}$ " lock washer,  $\frac{5}{8}$ " flat washer, one offset spacer, and Loctite over a  $\frac{5}{8}$ " x 2" bolt. Thread it into the baseplate through the existing access hole (Fig.Q), ensuring that the offset washer sits flush in the cutout in the bottom of the frame. Tighten the  $\frac{5}{8}$ " bolt to the torque specifications found at the end of these instructions. Then, tighten the  $4\frac{1}{2}$ " bolts you installed in the previous step to 90 ft-lbs.

15. Repeat steps 12-14 for the passenger side of the vehicle.



# BASEPLATE KIT INSTALLATION INSTRUCTIONS

**KIT# 523212-5**

10/26/23  
KS

ROADMASTER, Inc. 6110 NE 127th Ave. Vancouver, WA 98682 360-896-0407 fax 360-735-9300 www.roadmasterinc.com



Fig.R

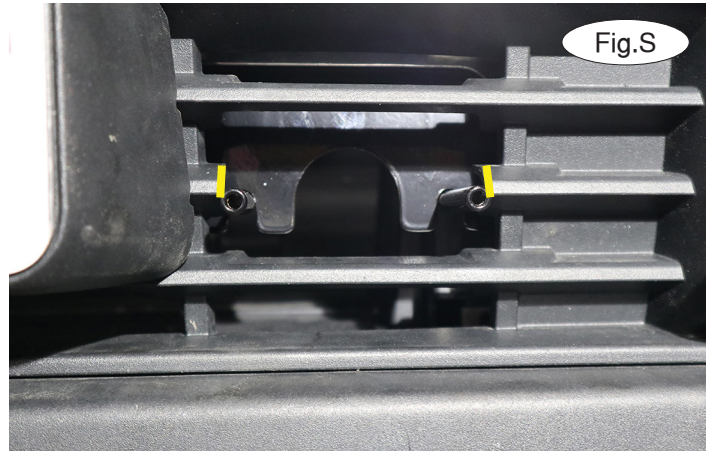


Fig.S

16. On each side, trim the grille as shown in Figure R. **If you wish to use our wiring plug mount and/or the included Brakeaway switch mount:** Proceed to steps 17 and 18. **If you are not using our wiring plug mount and/or the included Brakeaway switch mount:** Proceed to step 19.

17. For the wiring plug bracket, trim as shown in Figure S. Then, remove one 13mm bolt on the back of the grille. Locate the wiring bracket and place the slotted hole over the mount, center it over the opening, and replace the bolt (Fig.T).

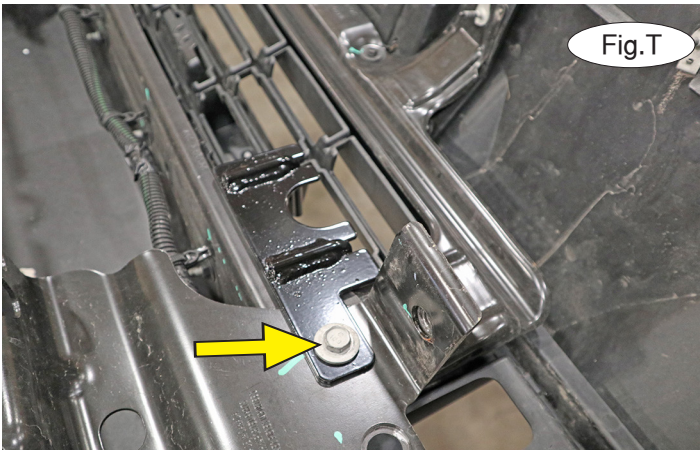


Fig.T



Fig.U

18. For the Brakeaway switch mount, trim as shown (Fig.U) and remove the opposite 13mm bolt on the back of the grille, place the bracket over the mount, and replace the bolt. *Note: If the vehicle is equipped with lower shutters, mount the switch as shown in Figure V.*



Fig.V



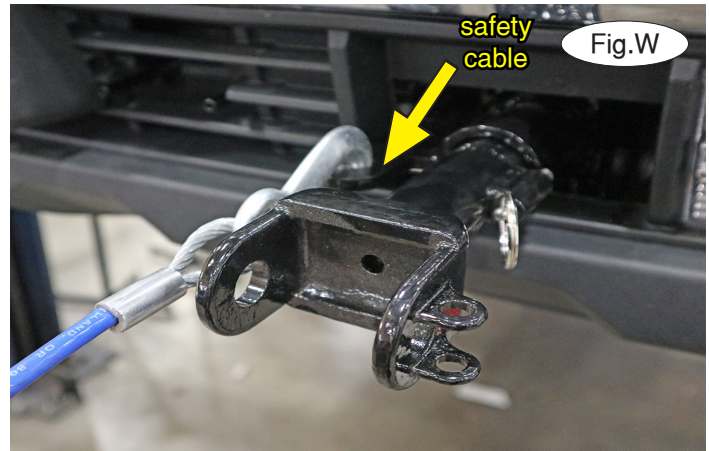
# BASEPLATE KIT INSTALLATION INSTRUCTIONS

**KIT# 523212-5**

10/26/23  
KS

ROADMASTER, Inc. 6110 NE 127th Ave. Vancouver, WA 98682 360-896-0407 fax 360-735-9300 www.roadmasterinc.com

- 19. Reassemble the fascia, reversing steps 1 through 10.
- 20. On each side, insert the removable front arm into the front receiver 90 degrees from its final towing position, depressing the spring-loaded pin against the receiver. Twist back 90 degrees until the spring-loaded pin snaps into place in the notch on the receiver, locking the arm into place in its final towing position. **Please note: It is the owner's responsibility to ensure the locking of the pins before towing. Otherwise, failure of the towing system will result.**
- 21. Install the tow bar to the baseplate according to the manufacturer's instructions.



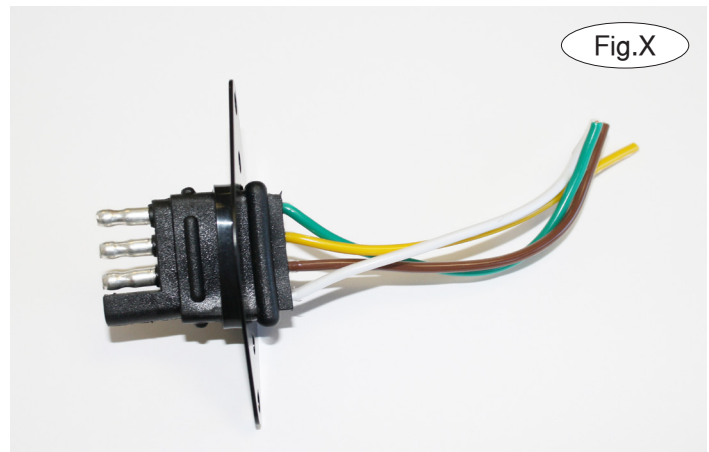
### IMPORTANT!

**Safety cables are required by law. When towing, connect safety cables to the safety cable tabs illustrated on the first page and in Figure W. Make certain there is adequate slack in the cables to allow a full turning radius; otherwise, damage will result. If necessary, longer cables or cable extensions are available.**

### Three options for attaching the wiring plug to the main receiver brace

**For four-wire round plugs:** attach to the plug mounting plate and then use the two supplied 3/4" self-tapping screws to attach the mounting plate to the grille.

**For four-wire flat plugs:** place the plug through the mounting plug plate, and then secure it using the supplied zip tie on the front of the plug (Fig.X). Use the two supplied 3/4" self-tapping screws to attach the mounting plate to the grille on the front of the main receiver brace.



### BOLT TORQUE REQUIREMENTS

Note: The torque values represented below are intended as general guidelines. Torque requirements for specific applications may vary. Roadmaster does not warrant this information to be accurate for all applications and disclaims all liability for any claims or damages which may result from its use.

#### STANDARD BOLTS

Thread Size	Grade	Torque
5/16-18	5	13 ft./lb.
3/8-16	5	23 ft./lb.
7/16-14	5	37 ft./lb.
1/2-13	5	57 ft./lb.
5/8-11	5	112 ft./lb.

#### METRIC BOLTS

Thread Size	Grade	Torque
6mm-1.0	8.8	6 ft./lb.
8mm-1.0	8.8	18 ft./lb.
8mm-1.25	8.8	16 ft./lb.
10mm-1.25	8.8	36 ft./lb.
10mm-1.5	8.8	31 ft./lb.

#### METRIC BOLTS

Thread Size	Grade	Torque
12mm-1.25	8.8	64 ft./lb.
12mm-1.5	8.8	60 ft./lb.
12mm-1.75	8.8	55 ft./lb.
14mm-2.0	8.8	88 ft./lb.

All illustrations and specifications contained herein are based on the latest information available at the time of publication approval. ROADMASTER, INC. reserves the right to make changes at any time without notice in material, specification and models or to discontinue models.