



# BASEPLATE KIT INSTALLATION INSTRUCTIONS

**KIT# 523220-5**

07/24  
RS

ROADMASTER, Inc. 6110 NE 127th Ave. Vancouver, WA 98682 360-896-0407 fax 360-735-9300 www.RoadmasterInc.com

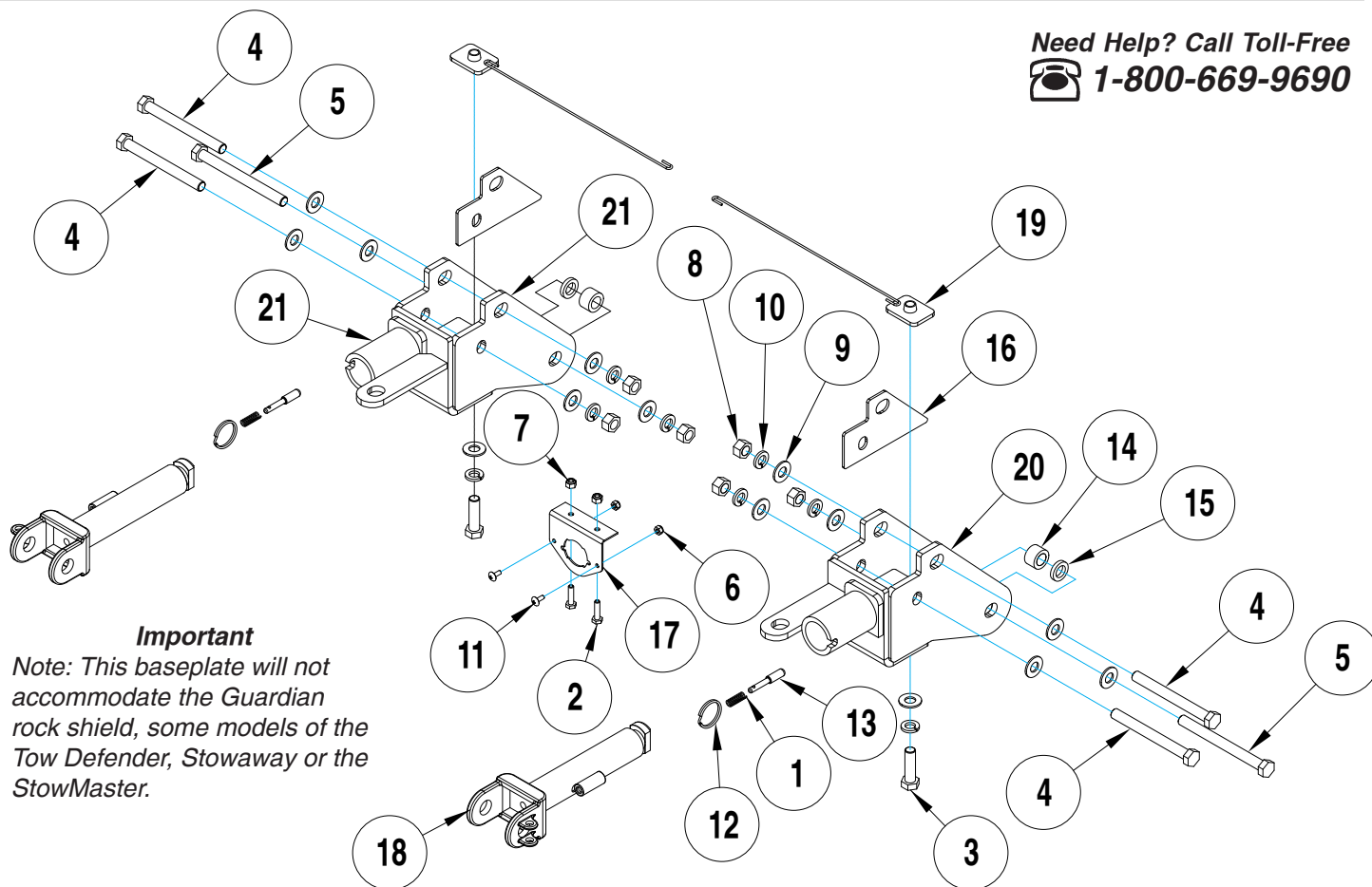
Second person to assist  
Ratchet and extensions  
7, 10, 15, and 18mm sockets  
18mm wrench

### What You'll Need

T15 Torx driver  
3/4" socket and wrench  
Panel tool

Reciprocating saw  
Torque wrench  
Loctite® Red or Blue  
Permanent marker

Need Help? Call Toll-Free  
 1-800-669-9690



### Important

Note: This baseplate will not accommodate the Guardian rock shield, some models of the Tow Defender, Stowaway or the StowMaster.

ITEM...	QTY .....	DESCRIPTION .....	PART NUMBER .....
1.....	2.....	SPRING .....	200146-00
2.....	2.....	1/4" x 1" BOLT .....	350005-00
3.....	2.....	1/2" x 1 3/4" BOLT .....	350096-00
4.....	4.....	1/2" x 5" BOLT.....	350107-00
5.....	2.....	1/2" x 5 1/2" BOLT.....	350108-00
6.....	2.....	#10 NYLON INSERT LOCK NUT .....	350249-00
7.....	2.....	1/4" NYLON INSERT LOCK NUT .....	350251-00
8.....	6.....	1/2" HEX NUT.....	350258-00
9.....	14.....	1/2" SAE WASHER.....	350308-20
10.....	8.....	1/2" LOCK WASHER .....	350309-00
11.....	2.....	#10 x 1/2" SCREW.....	350389-00
12.....	2.....	RING.....	350520-00
13.....	2.....	LOCK PIN .....	A000008
14.....	2.....	1" O.D. x 5/8" SPACER.....	A000156
15.....	2.....	1" O.D. x 3/16" SPACER .....	A002965
16.....	2.....	SHIM.....	A006586
17.....	1.....	WIRE PLUG PLATE .....	B000045
18.....	2.....	ARM.....	C002383
19.....	2.....	1 1/2" x 2" THREADED BACKING PLATE W/ 12" ROD .....	C001438
20.....	1.....	DRIVER SIDE RECEIVER.....	C003718
21.....	1.....	PASSENGER SIDE RECEIVER.....	C003719

All illustrations and specifications contained herein are based on the latest information available at the time of publication approval.  
ROADMASTER, INC. reserves the right to make changes at any time without notice in material, specification and models or to discontinue models.



# BASEPLATE KIT INSTALLATION INSTRUCTIONS

**KIT# 523220-5**

07/24  
RS

ROADMASTER, Inc. 6110 NE 127th Ave. Vancouver, WA 98682 360-896-0407 fax 360-735-9300 www.RoadmasterInc.com

This is one of our direct-connect baseplates, which allows the visible front portion of the bracket to be easily removed from the front of the vehicle (Fig.A and Fig.B). The baseplate consists of two main receiver braces, two removable front braces and a hardware pack.

The main receiver braces mount to the frame rails and tow hook mounts. The removable front braces install in the main receiver braces.

Before starting the installation, lay out the kit components in order, as they will be used. This will give you a visual idea of how the components work, and will also confirm that everything is present and accounted for.



**IMPORTANT:** All baseplates **must** be assembled with all the bolts left loose for final adjustment and positioning (before tightening) unless otherwise instructed. All bolts **must** be torqued for proper strength. If more than one bolt is used per fastening point, the diagram may only show one. Use flat washers over all slotted holes and lock washers on all fasteners.

## WARNING

Failure to heed these warnings or follow the installation instructions may result in a voided warranty, loss of towed vehicle, personal injury or death.

- Do not weld or modify this baseplate or its components. Welding or modification will void the warranty.
- Do not use this document as a basis to design/fabricate a baseplate, as it may not show all parts or structural components.
- We strongly recommend professional installation.
- If the towed vehicle has been in an accident, it must be properly repaired before attaching the baseplate. Do not install the baseplate if any structural frame damage is found.
- The installer must use all bolts and parts supplied. If running changes were made by the vehicle manufacturer after this kit was designed, some bolts or other fasteners may no longer be the correct size. It is the installer's responsibility to verify this kit is securely fastened to the vehicle.
- Use Loctite® Red on all bolts used to secure this baseplate. Torque all bolts to the specifications found at the end of these instructions. Do not over-torque the bolts or failure may occur.
- The installer must inspect the baseplate to ensure adequate clearance, particularly around hoses, air conditioner lines, radiators, etc. or non-warranty failure may result.
- Roadmaster manufactures many styles of baseplates. If your baseplate has removable arms, they must be removed before driving the vehicle, unless the arms can be pinned or padlocked in place. If not secured, the arms could vibrate out.
- Some motorhome chassis have such a tight turning radius that you can damage your motorhome, towed vehicle, tow bar or baseplate while turning sharply. Before getting on the road, test your turning radius in an empty parking lot. Turning too sharply could result in non-warranty damage to your towing system, motorhome and/or towed vehicle.
- Do not back up with the towed vehicle attached or non-warranty damage will occur to your towing system or vehicles.
- The safety cables must connect the towing vehicle to the towed vehicle frame to frame, with the cables crossed, with enough slack for sharp turns. See cable instructions for proper routing. Failure to do so will result in non-warranty damage and/or the loss of the towed vehicle.
- This kit is designed for use with ROADMASTER tow bars and ROADMASTER adapters only. Using this kit with other brands, without an approved ROADMASTER adapter, may result in non-warranty damage or injury.
- Receiver extensions and out-of-level towing situations of 3 inches or more. This can cause the system to swing much higher and lower, causing excessive strain on the tow bar, baseplate and frame. That can cause the towing system to fail, causing property damage, personal injury or even death. If you must use a receiver extension or drop hitch to tow, it will reduce your receiver's weight capacity by 1/3 to avoid damaging your system. Never use more than one extension and/or drop hitch, as this will void your warranty.
- Every 3,000 miles, the owner must inspect all mounting points for cracks or fatigue, and check the fasteners for proper torque, according to the bolt torque requirements chart on the last page of these instructions.
- The owner must follow the vehicle manufacturer's instructions to prepare the vehicle for towing. Failure to do so may cause severe damage to the vehicle.
- This baseplate is only warranted for the original installation. Installing a used baseplate on another vehicle is not recommended and will void the warranty.

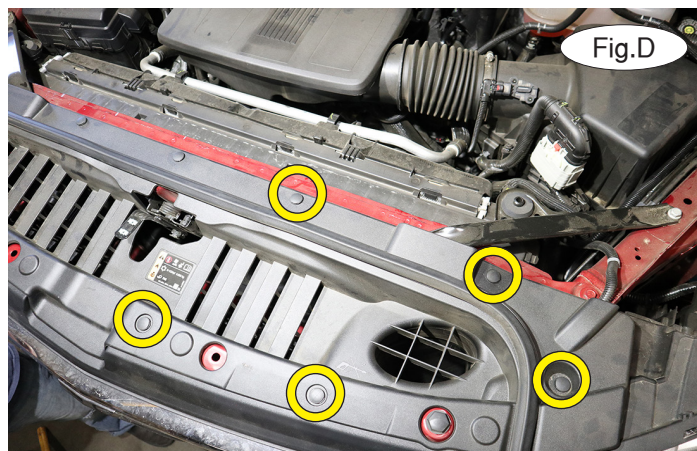
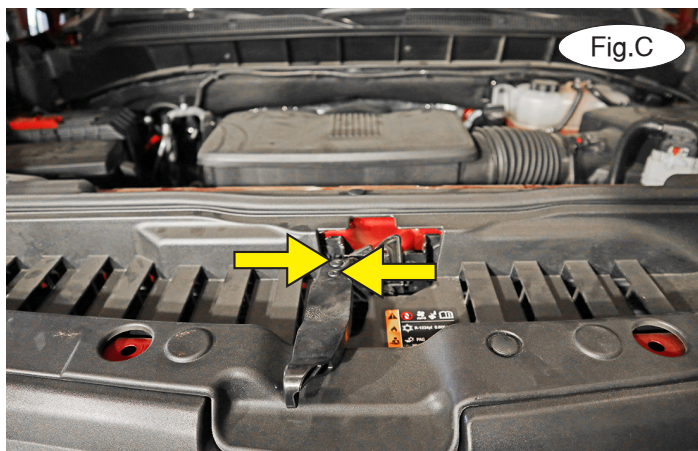


# BASEPLATE KIT INSTALLATION INSTRUCTIONS

**KIT# 523220-5**

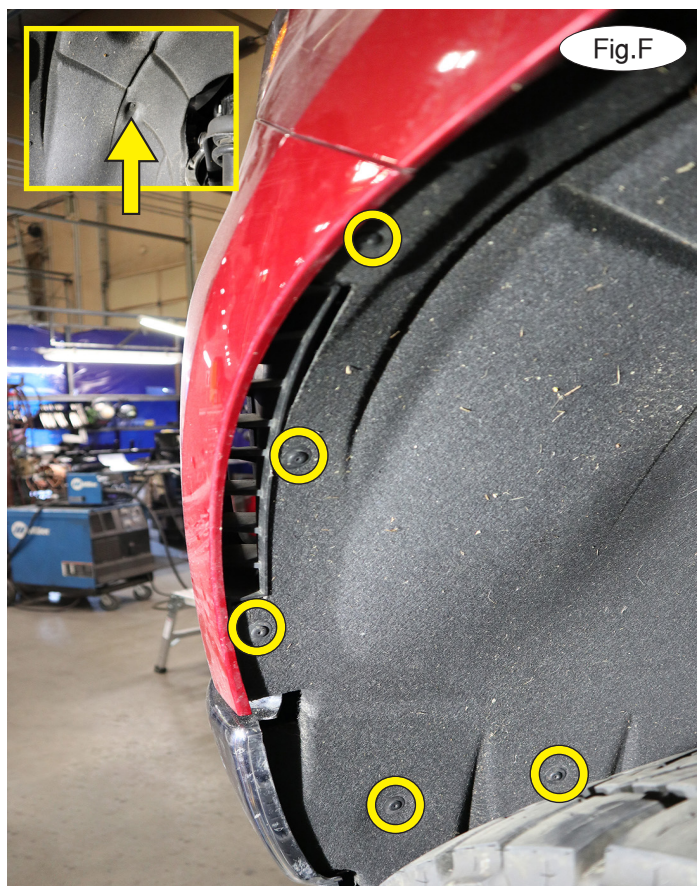
07/24  
RS

ROADMASTER, Inc. 6110 NE 127th Ave. Vancouver, WA 98682 360-896-0407 fax 360-735-9300 www.RoadmasterInc.com



**Important:** Please use all supplied bolts and parts and read all instructions carefully before beginning this installation. The majority of questions you may have can be answered within the text, and proper installation will ensure safe and secure travel.

1. Remove two T15 screws (Fig.C) attaching the hood release lever to the hood latch and slide toward the front of the vehicle to remove it.



*Note: We recommend disconnecting the battery at this point.*

2. Remove 10 plastic fasteners attaching the radiator cover to the core support and fascia (Fig.D – driver's side shown). Set the radiator cover aside for now.

3. On each side, remove two 10mm bolts attaching the grille to the radiator support (Fig.E).

4. On each side, remove six T15 screws attaching the wheel liner to the fascia (Fig.F and Fig.F– inset).

**NOTE:** If you have a Chevy Silverado 1500 ZR2 2024 (may apply to newer), see supplemental instructions at the end of this document for special instructions that must be completed before continuing.

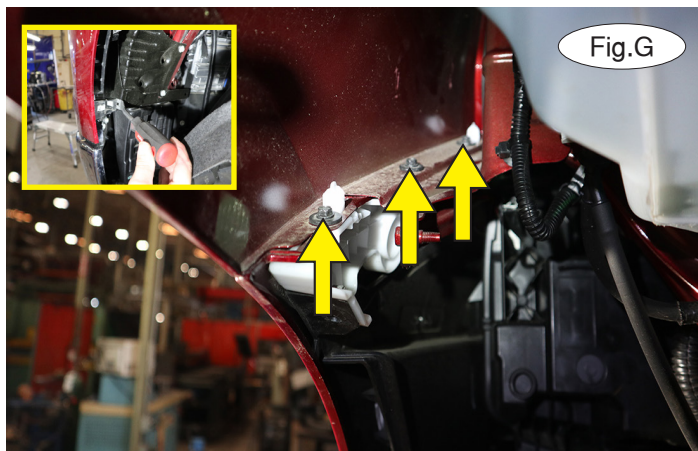


# BASEPLATE KIT INSTALLATION INSTRUCTIONS

**KIT# 523220-5**

07/24  
RS

ROADMASTER, Inc. 6110 NE 127th Ave. Vancouver, WA 98682 360-896-0407 fax 360-735-9300 www.RoadmasterInc.com



5. On each side, **LOOSEN** but do not remove three 7mm screws attaching the top of the fascia to the fender (Fig.G). Then, release two white clips attaching the fascia to the fender support (Fig.G inset – only one clip shown).

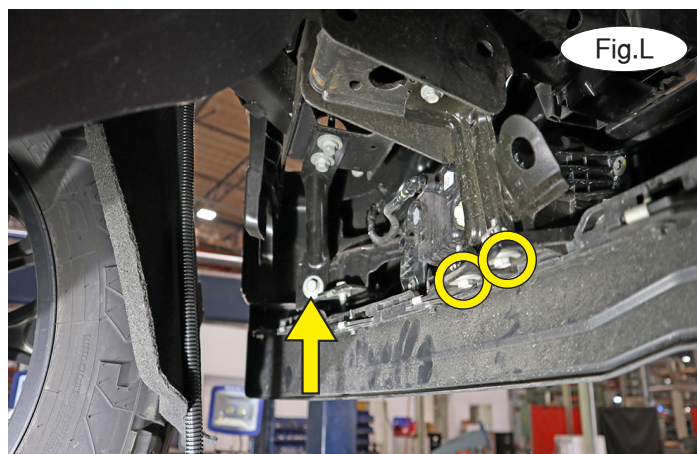
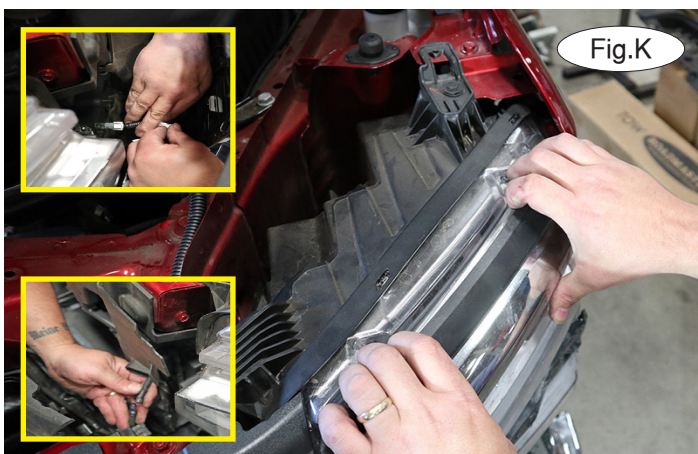
6. With the assistance of another person, pull out on the seam and release the clips along the fender seam and under the grille (Fig.H). Set the fascia aside for now.



7. Remove three 10mm bolts attaching the lower grille to the shutter housing (Fig.I).

8. On each side, release two clips attaching the top of the grille to the core support (Fig.J). Then, pull out on the trim piece above the headlight to release the clips (Fig.K). Disconnect the wiring harness on the passenger side (Fig.K – upper inset) and the front camera washer hose on driver's side, if the vehicle is so equipped (Fig.K – lower inset).

9. On each side, remove two 10mm bolts (Fig.L – circles) and one 15mm bolt (Fig.L – arrow) attaching the bumper to the frame (Fig.L). **Note: For ZR2 2024 Models; see supplemental step 2!**



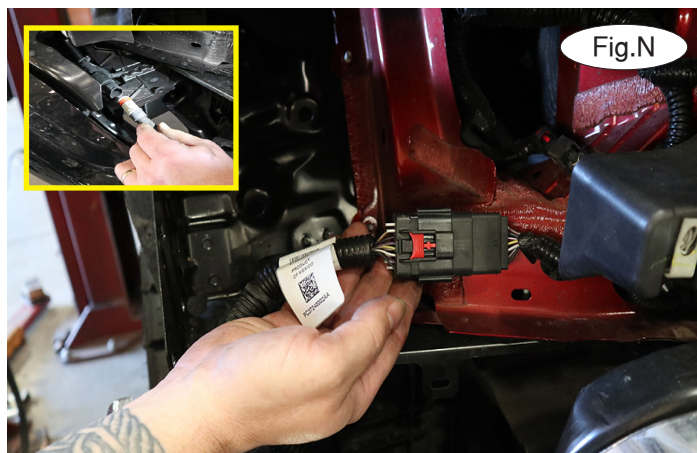
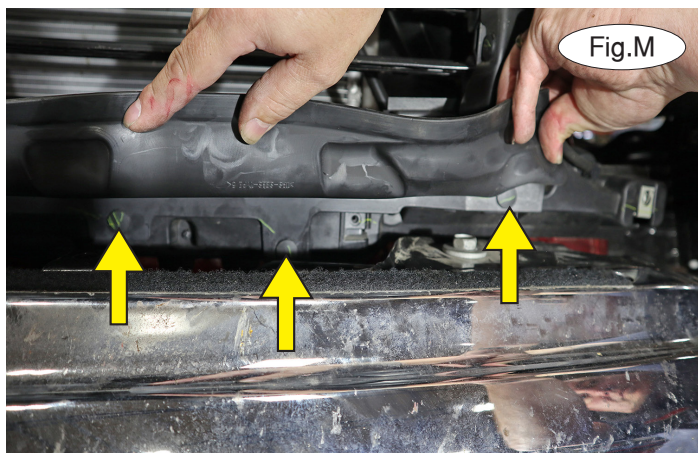


# BASEPLATE KIT INSTALLATION INSTRUCTIONS

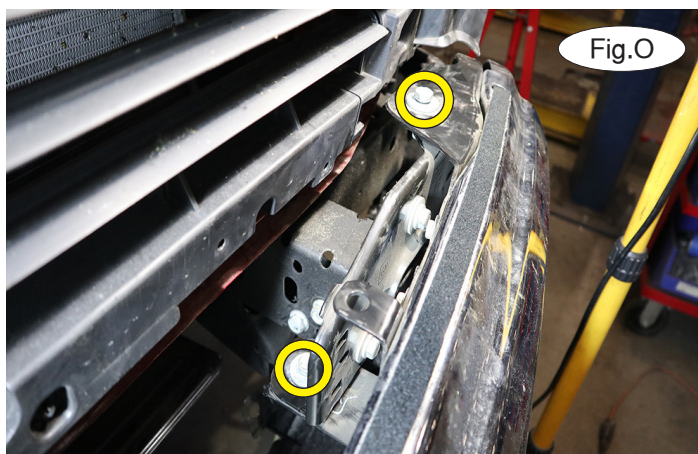
**KIT# 523220-5**

07/24  
RS

ROADMASTER, Inc. 6110 NE 127th Ave. Vancouver, WA 98682 360-896-0407 fax 360-735-9300 www.RoadmasterInc.com



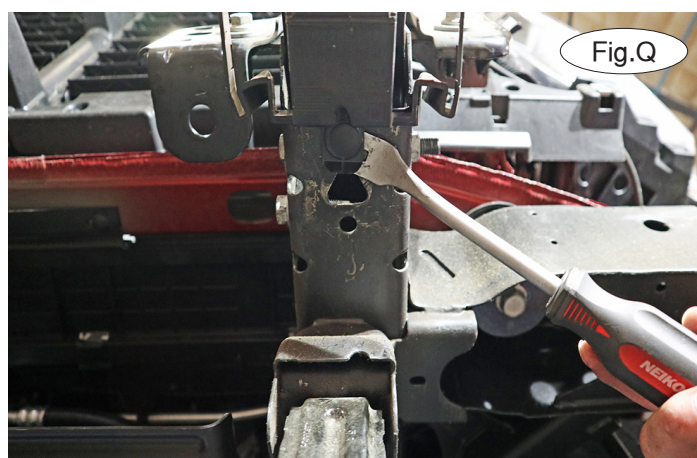
10. Remove seven plastic fasteners attaching the air dam to the shutter housing. There are three on the driver's side (Fig.M) and four on the passenger side. Set it aside for now. *Note: You will need to lift up the flap to access them.*



11. On the passenger side only, disconnect the electrical harness (Fig.N). **For models with block heaters only:** Disconnect the block heater plug on the driver's side (Fig.N – inset).

12. On each side, remove two 18mm bolts attaching the bumper to the frame (Fig.O). With the assistance of a second person, pull out to remove the bumper (Fig.P). Set it aside for now.

13. On each side, release one plastic Christmas tree fastener attaching the tow hook cover to the bottom of the frame (Fig.Q). Pull forward to remove the tow hook cover. It will not be replaced.



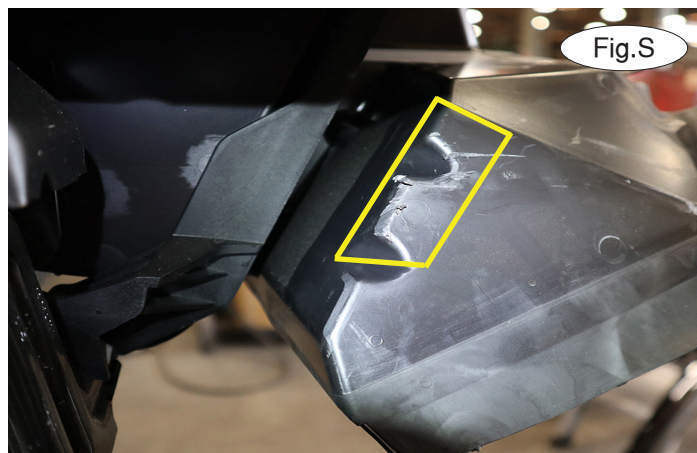


# BASEPLATE KIT INSTALLATION INSTRUCTIONS

**KIT# 523220-5**

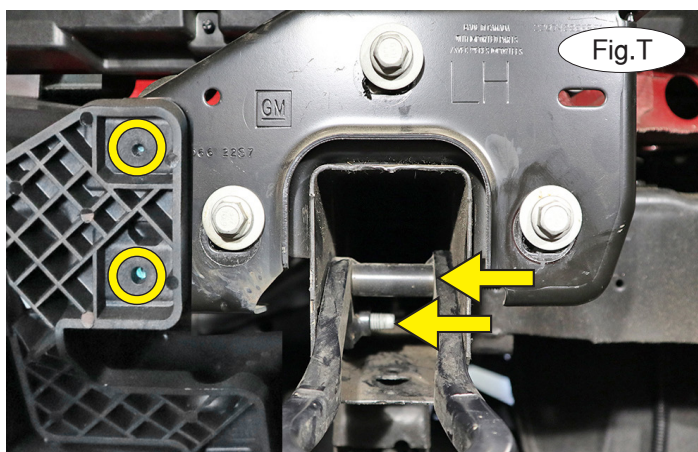
07/24  
RS

ROADMASTER, Inc. 6110 NE 127th Ave. Vancouver, WA 98682 360-896-0407 fax 360-735-9300 www.RoadmasterInc.com



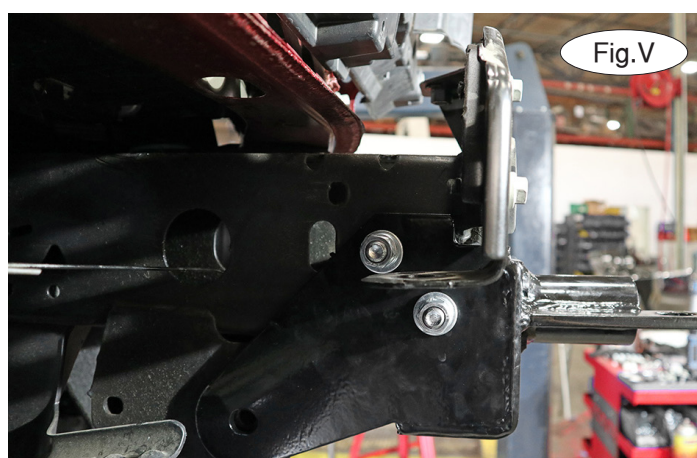
14. On the driver's side only, use a scribe or a black Sharpie to trace the outline of the three 15mm bumper core bolts (Fig.R). **IMPORTANT! If you don't mark the profile of these bolts and washers, the bumper will NOT align when it gets replaced.** Once you have traced the bolts, loosen the bolts about halfway BUT DO NOT REMOVE THEM.

15. **Non-diesel models:** Proceed to step 16. **For diesel models only:** On each side, trim the air baffle as shown (Fig.S).



16. On each side, remove two 18mm (head) bolts attaching the tow hook to the frame (Fig.T – arrows). They will not be replaced. *Note: The forward bolt also has a nut.* Retain the tow hooks and hardware in case the baseplate is ever removed. **For diesel models only:** You will also need to remove two 7mm screws attaching the air deflector to the intercooler (Fig.T – circles). Let it hang down for now.

17. Use the drawing on page 1 to locate the driver's side-specific baseplate receiver. Place two small 1/2" flat washers and Loctite over two 1/2" x 5" bolts and then place the side-specific baseplate receiver over the end of the frame (Fig.U). Place the prepared bolts through the tow hook mounts exposed in the previous step, bolting from the outside toward the inside. Finish the bolts with two small 1/2" flat washers, 1/2" lock washers and 1/2" nuts (Fig.V).



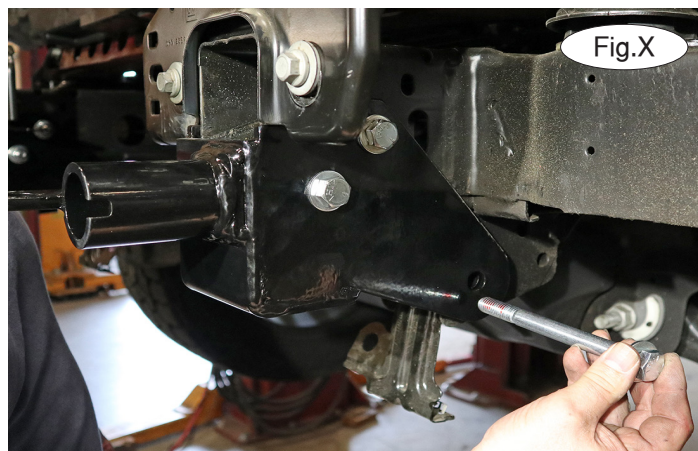
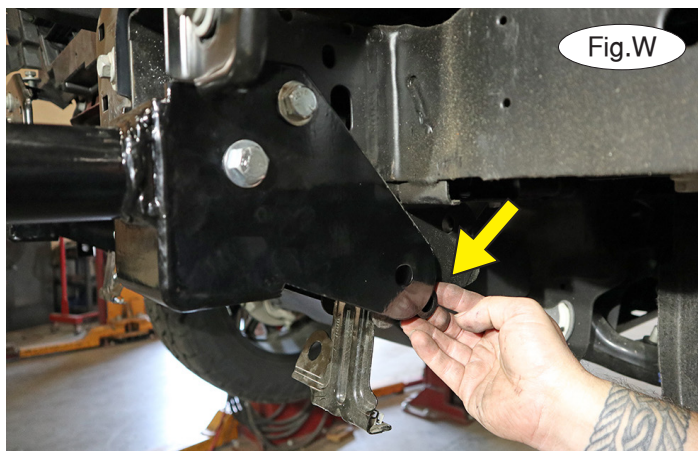


# BASEPLATE KIT INSTALLATION INSTRUCTIONS

**KIT# 523220-5**

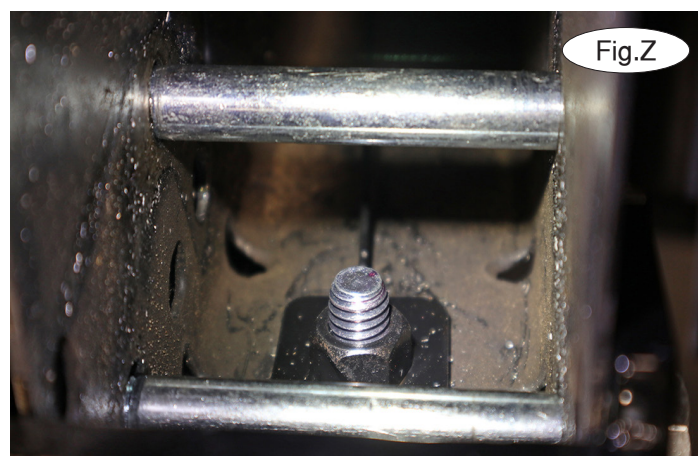
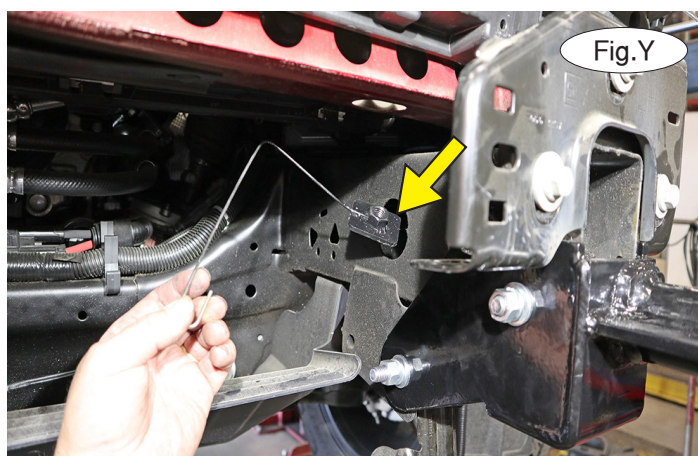
07/24  
RS

ROADMASTER, Inc. 6110 NE 127th Ave. Vancouver, WA 98682 360-896-0407 fax 360-735-9300 www.RoadmasterInc.com



18. Place a small  $\frac{1}{2}$ " flat washer and Loctite over a  $\frac{1}{2}$ " x  $5\frac{1}{2}$ " bolt. Insert a 1" O.D. x .188 wall pipe spacer x  $\frac{5}{8}$ " pipe spacer between the lower outside mount of the baseplate and the frame (Fig.W). Place the prepared  $5\frac{1}{2}$ " bolts through the lower rear mount (Fig.X). Finish with a  $\frac{1}{2}$ " small flat washer,  $\frac{1}{2}$ " lock washer and  $\frac{1}{2}$ " nut.

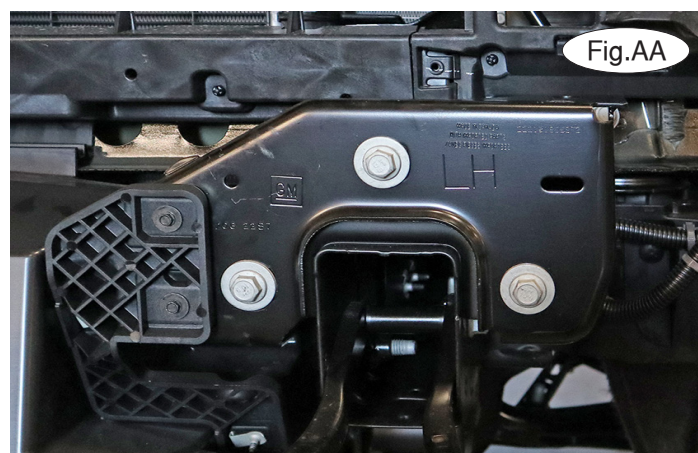
19. Place a small  $\frac{1}{2}$ " lock washer,  $\frac{1}{2}$ " flat washer and Loctite over a  $\frac{1}{2}$ " x  $1\frac{3}{4}$ " bolt. Locate the supplied  $\frac{3}{16}$ " x 2" x  $1\frac{1}{2}$ " nutted backing plate with rod and bend the rod as shown (Fig.Y). Place the backing plate inside the large access hole in the frame and over the hole in the bottom of the frame rail. Bolt into it using the  $1\frac{3}{4}$ " bolt (Fig Z).



20. Repeat steps 15-19 for the passenger side.

21. Tighten the bolts to the bolt torque specifications found at the end of these instructions. Tighten them in this order –  $1\frac{3}{4}$ ", 5" bolts and then the  $5\frac{1}{2}$ " bolts. Re-position the bumper mounting plate, ensuring that the 15mm bolts you loosened in step 14 now align with the profiles you traced. Then, tighten the 15mm bolts (Fig.AA).

22. On each side, trim the grille as shown (Fig.BB). Then, reinstall the bumper by reversing steps 1 through 12.





# BASEPLATE KIT INSTALLATION INSTRUCTIONS

**KIT# 523220-5**

07/24  
RS

ROADMASTER, Inc. 6110 NE 127th Ave. Vancouver, WA 98682 360-896-0407 fax 360-735-9300 www.RoadmasterInc.com



23. On each side, insert the removable front arm into the front receiver 90 degrees from its final towing position, depressing the spring-loaded pin against the receiver. Twist back 90 degrees until the spring-loaded pin snaps into place in the notch on the receiver, locking the arm into place in its final towing position. **Please note: It is the owner's responsibility to ensure the locking of the pins before towing. Otherwise, failure of the towing system will result.**

24. Install the tow bar to the mounting bracket according to the manufacturer's instructions.

### IMPORTANT!

**Safety cables are required by law. When towing, connect safety cables to the safety cable tabs illustrated in Figure CC. Make certain there is adequate slack in the cables to allow a full turning radius; otherwise, damage will result. If necessary, longer cables or cable extensions are available.**

### BOLT TORQUE REQUIREMENTS

Note: The torque values represented below are intended as general guidelines. Torque requirements for specific applications may vary. Roadmaster does not warrant this information to be accurate for all applications and disclaims all liability for any claims or damages which may result from its use.

#### STANDARD BOLTS

Thread Size	Grade	Torque
5/16-18	5	13 ft./lb.
3/8-16	5	23 ft./lb.
7/16-14	5	37 ft./lb.
1/2-13	5	57 ft./lb.
5/8-11	5	112 ft./lb.

#### METRIC BOLTS

Thread Size	Grade	Torque
6mm-1.0	8.8	6 ft./lb.
8mm-1.0	8.8	18 ft./lb.
8mm-1.25	8.8	16 ft./lb.
10mm-1.25	8.8	36 ft./lb.
10mm-1.5	8.8	31 ft./lb.

#### METRIC BOLTS

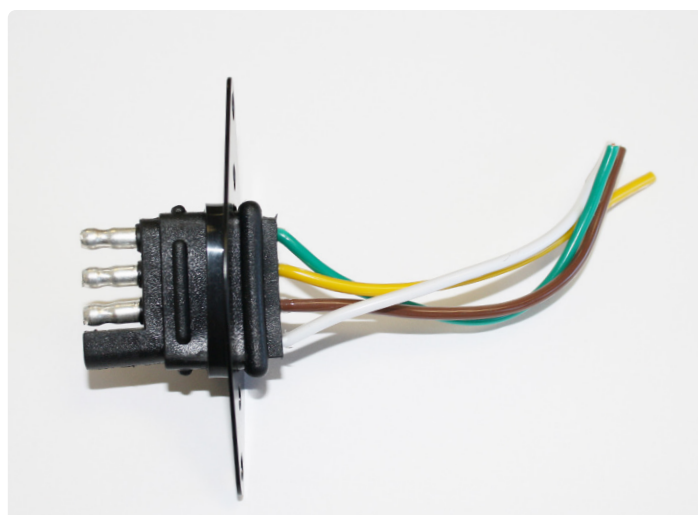
Thread Size	Grade	Torque
12mm-1.25	8.8	64 ft./lb.
12mm-1.5	8.8	60 ft./lb.
12mm-1.75	8.8	55 ft./lb.
14mm-2.0	8.8	88 ft./lb.

### Three options for attaching the wiring plug to the main receiver brace:

**For six-wire plugs:** Use the two supplied 3/4" self-tapping screws to attach the electrical plug directly to the rods on the front of the main receiver brace.

**For four-wire round plugs:** Attach to the plug mounting plate and then use the two supplied 3/4" self-tapping screws to attach the mounting plate to the rods on the front of the main receiver brace.

**For four-wire flat plugs:** Place the plug through the mounting plug plate, and then secure it using the supplied zip tie on the front of the plug (Adjacent Figure). Use the two supplied 3/4" self-tapping screws to attach the mounting plate to the rods on the front of the main receiver brace.





# BASEPLATE KIT INSTALLATION INSTRUCTIONS

**KIT# 523220-5**

07/24  
RS

ROADMASTER, Inc. 6110 NE 127th Ave. Vancouver, WA 98682 360-896-0407 fax 360-735-9300 www.RoadmasterInc.com

## Supplemental Instructions for Chevy Silverado 1500 ZR2 2024

1. Remove six 13mm bolts attaching the skid plate to the subframe. Place the skid plate and bolts aside for now as they will be reinstalled during step 22. See Figure DD. Return to main instructions.
2. From the underside of the vehicle, on each side; remove one 18mm bolt and two 15mm bolts.
3. The universal wire plug bracket can be mounted effectively anywhere, we recommend next to one of the baseplate receivers.
4. When attaching the side specific baseplate receivers use the included 3/16" spacer for the back bolt. Follow the rest of the instructions as written.



Fig.DD