

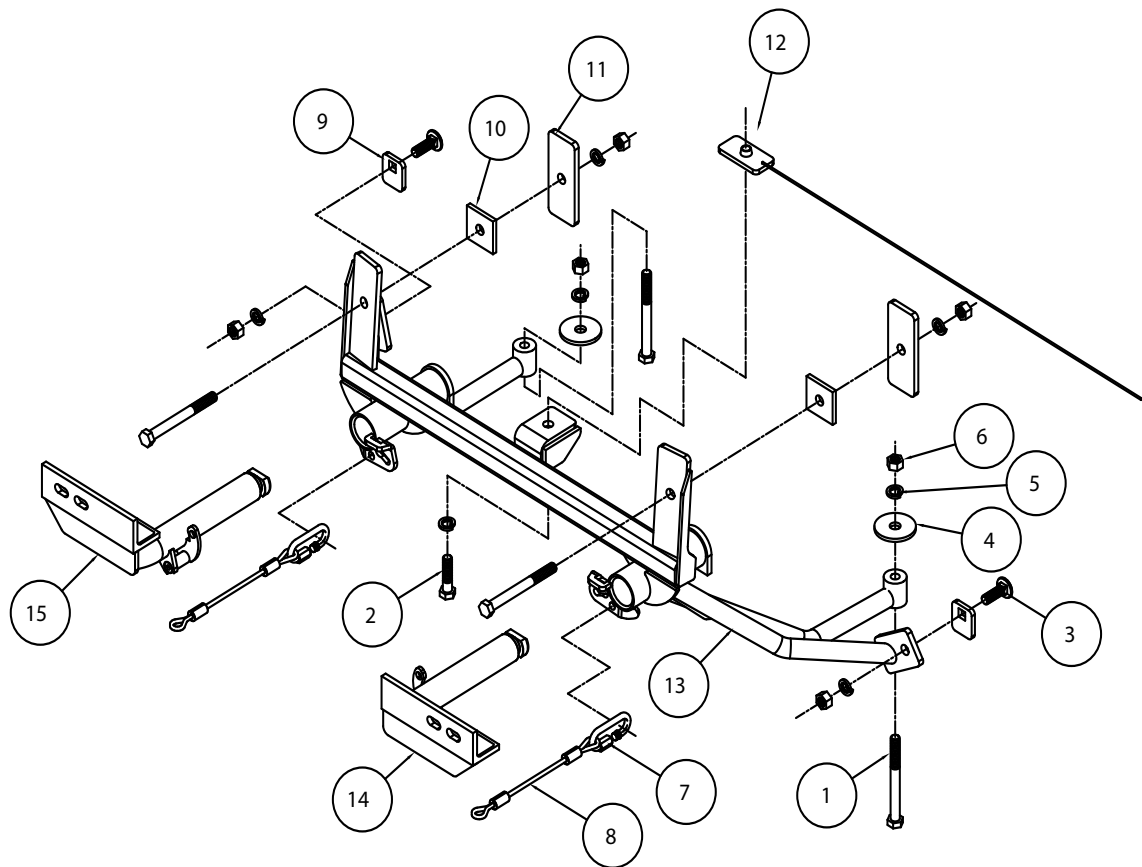


BASEPLATE KIT INSTALLATION INSTRUCTIONS

KIT# 524422-1

02/20/13
KS

ROADMASTER, Inc. 6110 NE 127th Ave. Vancouver, WA 98682 360-896-0407 fax 360-735-9300 www.roadmasterinc.com



ITEM	QTY	NAME	MATERIAL
1.....	4.....	1/2" x 5" BOLT	350107-00
2.....	1.....	1/2" x 2" BOLT	350097-00
3.....	2.....	1/2" x 1 1/2" CARRIAGE BOLT	350362-00
4.....	2.....	1/2" PLATE WASHER	A-003086
5.....	7.....	1/2" LOCK WASHER.....	350309-00
6.....	6.....	1/2" HEX NUT.....	350258-00
7.....	2.....	QUICK LINK	200008-00
8.....	2.....	SAFETY CABLE 8".....	650648-8
9.....	2.....	1/4" x 1 1/2" x 1 3/4" SQUARE HOLE BACKING PLATE.....	A-002885
10.....	2.....	5/16" x 2" x 2" ROUND HOLE BACKING PLATE.....	A-003113
11.....	2.....	5/16" x 2" x 5" ROUND HOLE BACKING PLATE.....	A-002888
12.....	1.....	3/16" x 1 1/2" x 3" THREADED BACKING PLATE	C-001841
13.....	1.....	MAIN RECEIVER	C-001977
14.....	1.....	DRIVER SIDE ARM	C-001839
15.....	1.....	PASSENGER SIDE ARM.....	C-001840



BASEPLATE KIT INSTALLATION INSTRUCTIONS

KIT# 524422-1

02/20/13
KS

ROADMASTER, Inc. 6110 NE 127th Ave. Vancouver, WA 98682 360-896-0407 fax 360-735-9300 www.roadmasterinc.com

This is one of our EZ2 series brackets, which allows the visible front portion of the bracket to be easily removed from the front of the vehicle (Fig.A and Fig.B). The bracket consists of a main receiver brace, two removable front braces, and a hardware pack.

The main receiver brace mounts to the frame rails and the bumper core. The removable front braces install in the main receiver brace.

Before starting the installation, lay out the kit components in order, as they will be used. This will give you a visual idea of how the components work, and will also confirm that everything is present and accounted for.



IMPORTANT: All baseplates **must** be assembled with all the bolts left loose for final adjustment and positioning (before tightening) unless otherwise instructed. All bolts **must** be torqued for proper strength. If more than one bolt is used per fastening point, the diagram may only show one. Use flat washers over all slotted holes and lock washers on all fasteners.

WARNING

Failure to heed these warnings or follow the installation instructions may result in a voided warranty, loss of towed vehicle, personal injury or death.

- Do not weld or modify this baseplate or its components. Welding or modification will void the warranty.
- Do not use this document as a basis to design/fabricate a baseplate, as it may not show all parts or structural components.
- We strongly recommend professional installation.
- If the towed vehicle has been in an accident, it must be properly repaired before attaching the baseplate. Do not install the baseplate if any structural frame damage is found.
- The installer must use all bolts and parts supplied. If running changes were made by the vehicle manufacturer after this kit was designed, some bolts or other fasteners may no longer be the correct size. It is the installer's responsibility to verify this kit is securely fastened to the vehicle.
- Use Loctite® Red on all bolts used to secure this baseplate. Torque all bolts to the specifications found at the end of these instructions. Do not over-torque the bolts or failure may occur.
- The installer must inspect the baseplate to ensure adequate clearance, particularly around hoses, air conditioner lines, radiators, etc. or non-warranty failure may result.
- Roadmaster manufactures many styles of baseplates. If your baseplate has removable arms, they must be removed before driving the vehicle, unless the arms can be pinned or padlocked in place. If not secured, the arms could vibrate out.
- Some motorhome chassis have such a tight turning radius that you can damage your motorhome, towed vehicle, tow bar or baseplate while turning sharply. Before getting on the road, test your turning radius in an empty parking lot. Turning too sharply could result in non-warranty damage to your towing system, motorhome and/or towed vehicle.
- Do not back up with the towed vehicle attached or non-warranty damage will occur to your towing system or vehicles.
- The safety cables must connect the towing vehicle to the towed vehicle frame to frame, with the cables crossed, with enough slack for sharp turns. See cable instructions for proper routing. Failure to do so will result in non-warranty damage and/or the loss of the towed vehicle.
- This kit is designed for use with ROADMASTER tow bars and ROADMASTER adapters only. Using this kit with other brands, without an approved ROADMASTER adapter, may result in non-warranty damage or injury.
- Receiver extensions and out-of-level towing situations of 3 inches or more. This can cause the system to swing much higher and lower, causing excessive strain on the tow bar, baseplate and frame. That can cause the towing system to fail, causing property damage, personal injury or even death. If you must use a receiver extension or drop hitch to tow, it will reduce your receiver's weight capacity by 1/3 to avoid damaging your system. Never use more than one extension and/or drop hitch, as this will void your warranty.
- Every 3,000 miles, the owner must inspect all mounting points for cracks or fatigue, and check the fasteners for proper torque, according to the bolt torque requirements chart on the last page of these instructions.
- The owner must follow the vehicle manufacturer's instructions to prepare the vehicle for towing. Failure to do so may cause severe damage to the vehicle.
- This baseplate is only warranted for the original installation. Installing a used baseplate on another vehicle is not recommended and will void the warranty.

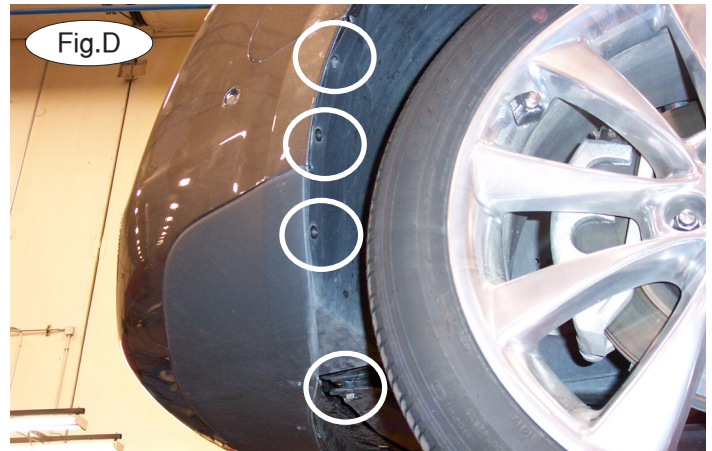
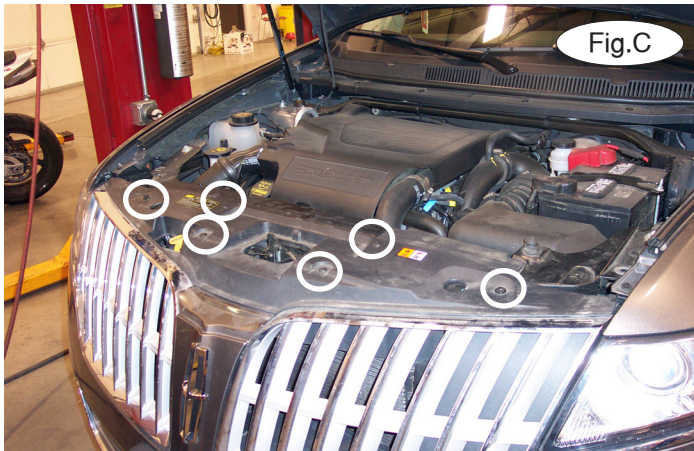


BASEPLATE KIT INSTALLATION INSTRUCTIONS

KIT# 524422-1

02/20/13
KS

ROADMASTER, Inc. 6110 NE 127th Ave. Vancouver, WA 98682 360-896-0407 fax 360-735-9300 www.roadmasterinc.com



1. **Important:** please use all supplied bolts and parts and read all instructions carefully before beginning this installation. The majority of questions you may have can be answered within the text, and proper installation will ensure safe and secure travel. Now, begin the installation. remove two 10mm (head) bolts and four plastic fasteners attaching the top of the fascia to the core support (Fig.C).

2. On each side, remove four 5mm (head) attaching the fender liner to the fascia (Fig.D – passenger side).



3. Remove three plastic fasteners attaching the bottom of the fascia to the bottom of the radiator support (Fig.E).

4. Pull out and forward on the corners of the fascia to remove it (Fig.F). *Note:* unplug the fog lights and the proximity sensors, if the vehicle is so equipped.

5. Using the two pre-existing holes in the bumper as templates, drill a 1/2" hole through the back of the bumper core (Fig.G). *Note:* use a piece of metal on the back of the bumper core to avoid drilling into engine components.



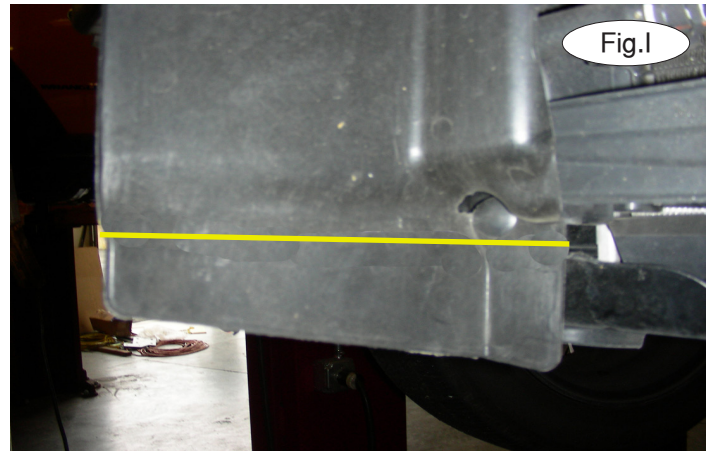
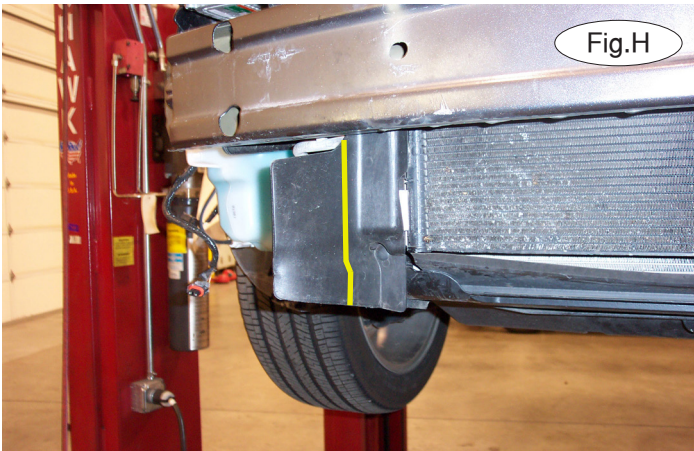


BASEPLATE KIT INSTALLATION INSTRUCTIONS

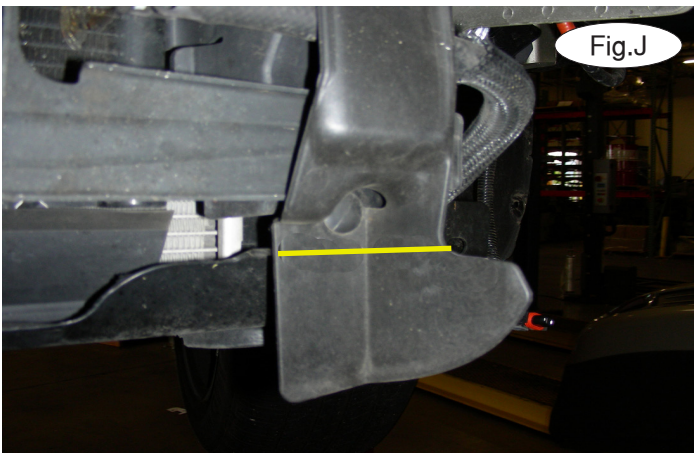
KIT# 524422-1

02/20/13
KS

ROADMASTER, Inc. 6110 NE 127th Ave. Vancouver, WA 98682 360-896-0407 fax 360-735-9300 www.roadmasterinc.com

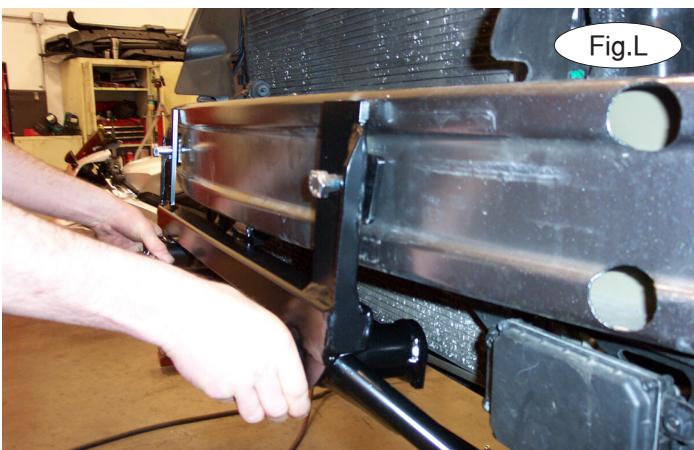


6. **For 3.5 models:** trim the passenger side air deflector using the yellow lines in Figure H as a guide for trimming. **For 3.7 models:** trim the passenger side (Fig.I) and driver's side (Fig.J). Now, on each side, trim the front edge of the center splash shield around the existing hole in the bottom of the core support. Use the yellow lines in Figure K as a guide for trimming.



7. Place two of the supplied $\frac{1}{2}$ " x 5" bolts through the upper mounting points on the main receiver brace. Place one of the supplied $\frac{5}{16}$ " x 2" x 2" backing plates over each bolt and place the bolts through the front and back of the bumper core (Fig.L).

8. On each side, place a $\frac{5}{16}$ " x 2" x 5" backing plate over the back of the $\frac{1}{2}$ " x 5" bolts you installed in the previous step. Bolt each side into place using a $\frac{1}{2}$ " lock washer and nut. *Note:* the plate will need to be rotated on the driver's side (Fig.M) to allow clearance for the active cruise control, if the vehicle is so equipped.



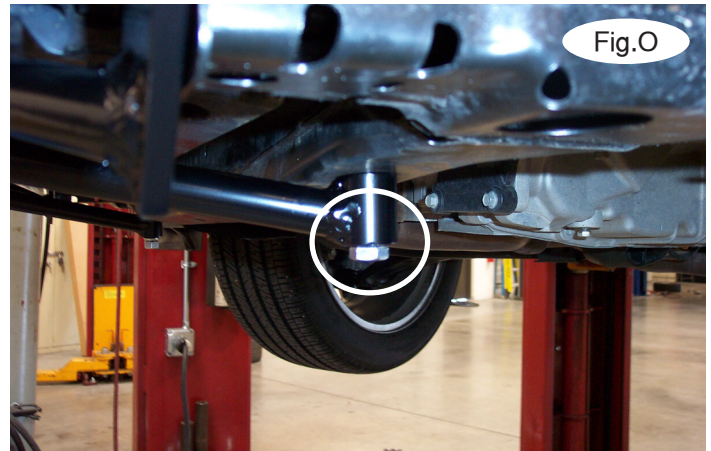


BASEPLATE KIT INSTALLATION INSTRUCTIONS

KIT# 524422-1

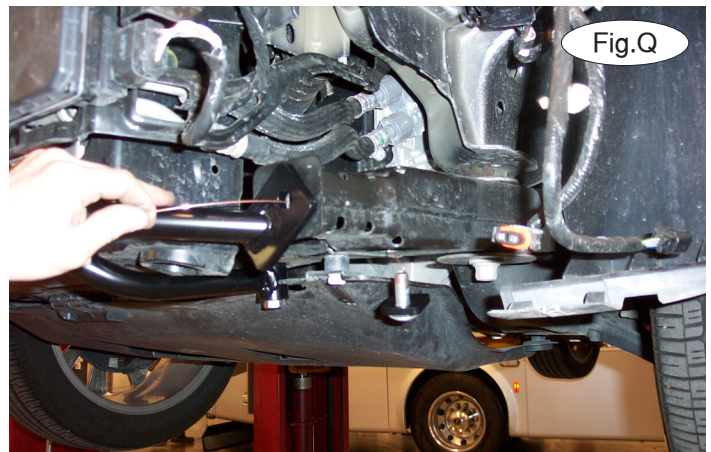
02/20/13
KS

ROADMASTER, Inc. 6110 NE 127th Ave. Vancouver, WA 98682 360-896-0407 fax 360-735-9300 www.roadmasterinc.com



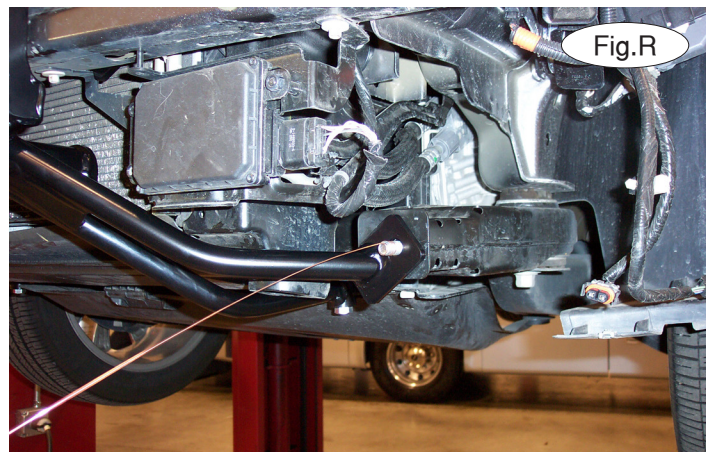
9. On each side, place one of the supplied $\frac{1}{2}$ " x 5" bolts through the rear mounting point and through the pre-existing hole in the top and bottom of the subframe. Place one of the $\frac{1}{2}$ " plate washers over the top of the bolt, and finish with a $\frac{1}{2}$ " lock washer and nut (Fig.N and Fig.O).

10. Using the pre-existing hole in the center mounting point of the brace as a template, drill a $\frac{1}{2}$ " hole up through the bottom of the bumper core (Fig.P).



11. Place a $\frac{1}{2}$ " x $1\frac{1}{2}$ " carriage bolt through a $\frac{1}{2}$ " x $1\frac{3}{4}$ " backing plate and fishwire it through the large, pre-existing opening in the end of the frame rail (Fig.Q and Fig.R).

12. Tighten all bolts to the bolt torque requirements found at the end of these instructions.



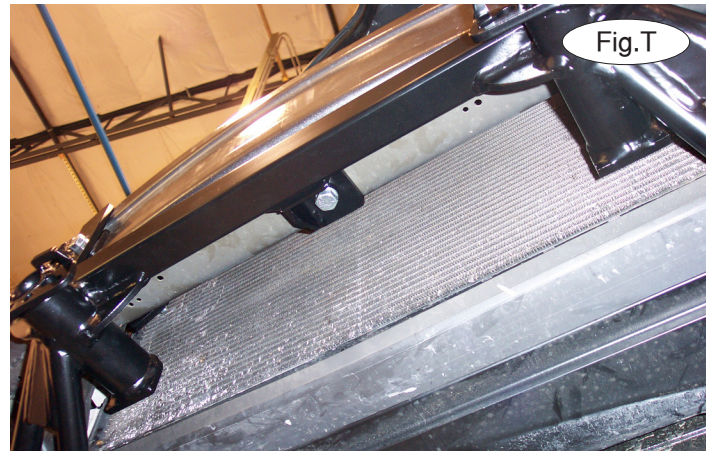
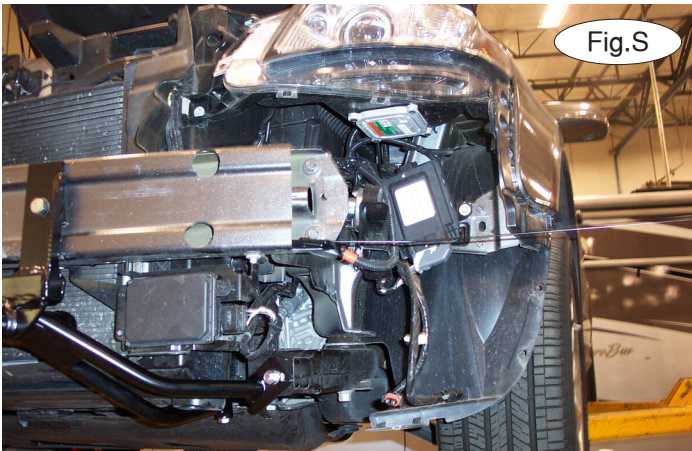


BASEPLATE KIT INSTALLATION INSTRUCTIONS

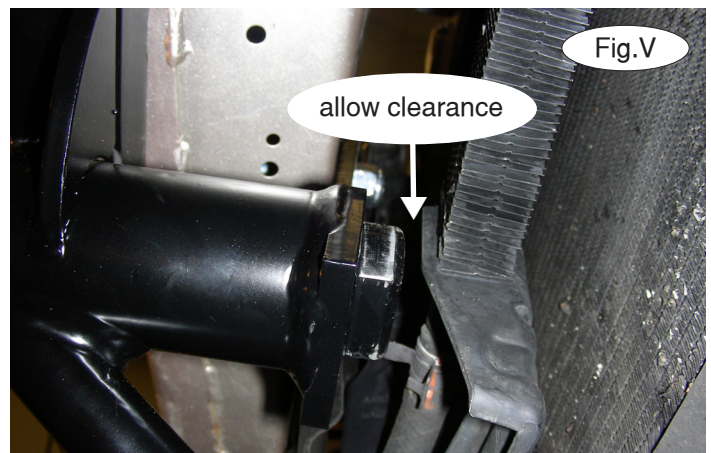
KIT# 524422-1

02/20/13
KS

ROADMASTER, Inc. 6110 NE 127th Ave. Vancouver, WA 98682 360-896-0407 fax 360-735-9300 www.roadmasterinc.com



13. Place the 3/16" x 1 1/2" x 3" threaded backing plate with wire inside the frame over the center mounting point of the main receiver brace (Fig.S). Bolt up through the center mounting point, bumper core and into the threaded backing plate with wire using the supplied 1/2" x 1 1/2" bolt and lock washer (Fig.T).



14. Using a pair of pliers, break the wire off the backing plate (Fig.U).

15. Test fit the arms into the main receiver brace. If the back of the cam is hitting the power steering cooler line, bend the power steering cooler mounting brackets back slightly toward the radiator to allow clearance for the power steering cooler line (Fig.V).

16. Using a pair of pliers, remove the two clips attaching the foam shock absorption pad to the back of the fascia (Fig.W).



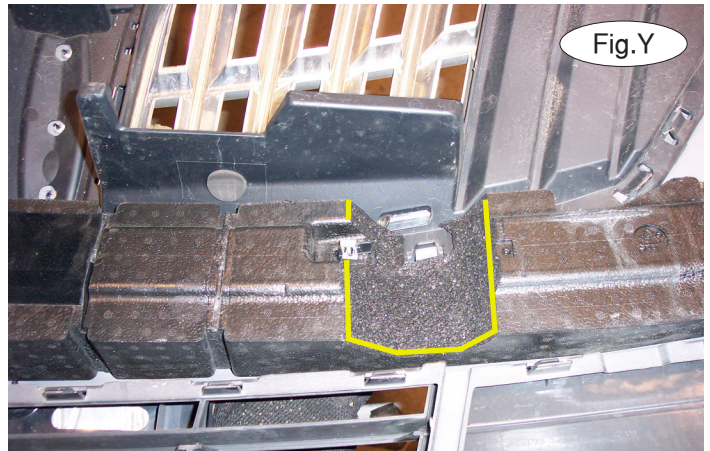


BASEPLATE KIT INSTALLATION INSTRUCTIONS

KIT# 524422-1

02/20/13
KS

ROADMASTER, Inc. 6110 NE 127th Ave. Vancouver, WA 98682 360-896-0407 fax 360-735-9300 www.roadmasterinc.com



17. Hold the foam shock absorption pad over the bumper core (Fig.X) and mark it for trimming to allow clearance for the main receiver brace. Use the yellow lines in Figure Y as a guide for trimming each side.

18. Reassemble the fascia, reversing steps 1 through 4.



19. Trim the lower air dam to allow clearance for the main receiver brace. Use the yellow lines in Figure Z as a guide for trimming.

20. Trim the grille using the yellow lines in Figure AA as a guide for trimming.

21. Insert the removable front bracket arms into the front receiver braces, and twist each one 90 degrees to lock.

22. Attach the 8" safety cables with the cable connectors (Q-Links) to the front of the receiver braces.

23. Attach the ends of the safety cables to the tow vehicle's safety cables.

24. Install the tow bar to the mounting bracket according to the manufacturer's instructions.

BOLT TORQUE REQUIREMENTS

Note: The torque values represented below are intended as general guidelines. Torque requirements for specific applications may vary. Roadmaster does not warrant this information to be accurate for all applications and disclaims all liability for any claims or damages which may result from its use.

STANDARD BOLTS

Thread Size	Grade	Torque
5/16	5	13 ft./lb.
3/8	5	23 ft./lb.
7/16	5	37 ft./lb.
1/2	5	56 ft./lb.
5/8	5	150 ft./lb.

METRIC BOLTS

Thread Size	Grade	Plated / Unplated
8mm-1.0	8.8	20 ft./lb. 18 ft./lb.
8mm-1.25	8.8	19 ft./lb. 18 ft./lb.
10mm-1.25	8.8	38 ft./lb. 36 ft./lb.
10mm-1.5	8.8	37 ft./lb. 35 ft./lb.

METRIC BOLTS

Thread Size	Grade	Plated / Unplated
12mm-1.25	8.8	70 ft./lb. 65 ft./lb.
12mm-1.5	8.8	66 ft./lb. 61 ft./lb.
12mm-1.75	8.8	65 ft./lb. 60 ft./lb.
14mm-2.0	8.8	104 ft./lb. 97 ft./lb.

All illustrations and specifications contained herein are based on the latest information available at the time of publication approval. ROADMASTER, INC. reserves the right to make changes at any time without notice in material, specification and models or to discontinue models.