



BASEPLATE KIT INSTALLATION INSTRUCTIONS

KIT# 524452-5

10/13/22
KS

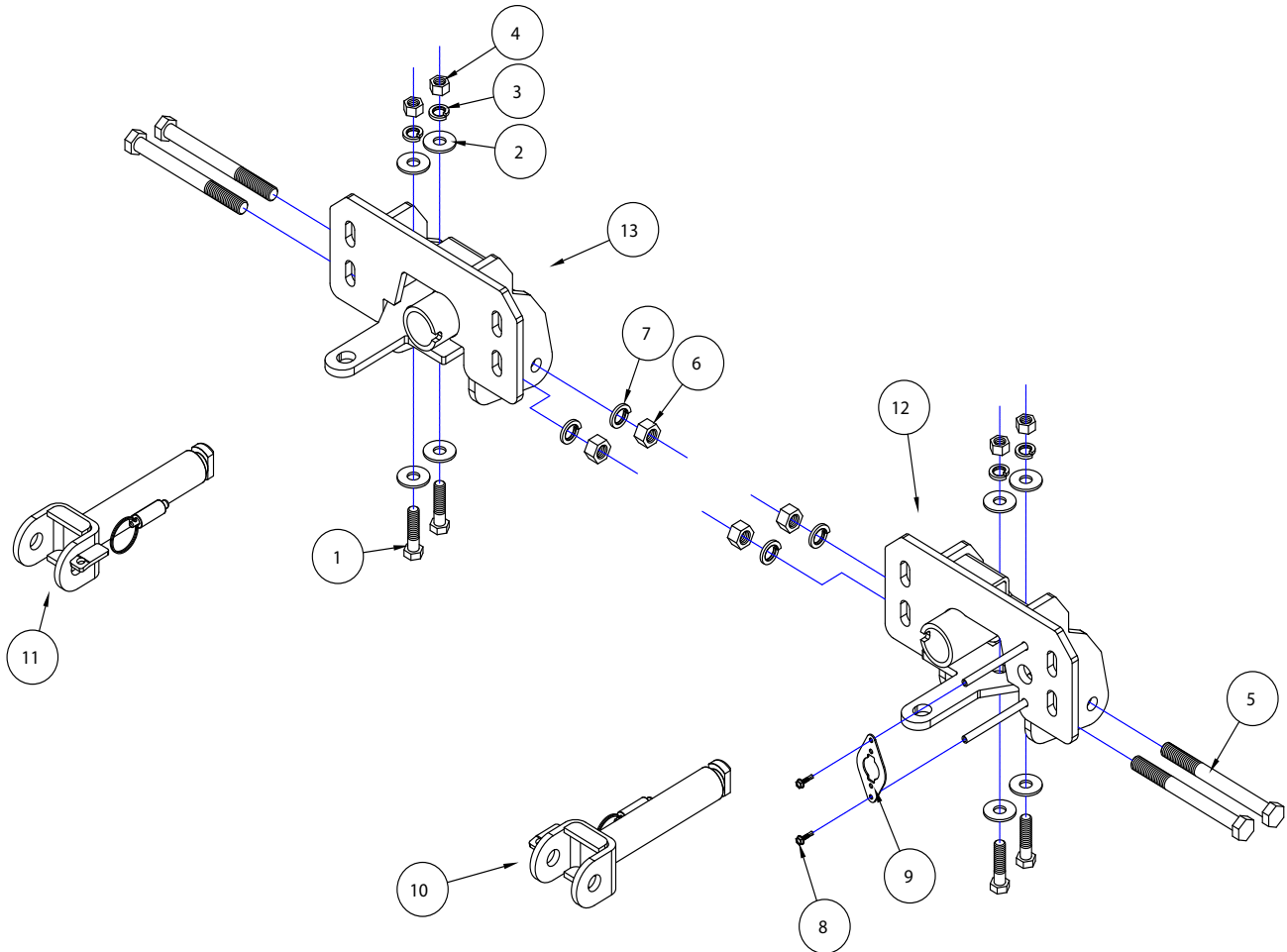
ROADMASTER, Inc. 6110 NE 127th Ave. Vancouver, WA 98682 360-896-0407 fax 360-735-9300 www.roadmasterinc.com

Important

Note: This baseplate will not accommodate the Guardian rock shield, some models of the Tow Defender, Stowaway or any StowMaster tow bar.

⚠ WARNING

Only for use with tow bars rated at or above 10,000 lbs. GVWR. Using a lower rated tow bar may result in non-warranty failure, property damage, personal injury or death.



ITEM	QTY	NAME	PART #
1	4	1/2" x 2" BOLT	350097-00
2	8	1/2" FLAT WASHER	350308-00
3	4	1/2" LOCK WASHER	350309-00
4	4	1/2" NUT	350258-00
5	4	5/8" BOLT x 6 1/2"	350162-10
6	4	5/8" NUT	350262-00
7	4	5/8" LOCK WASHER	350313-00
8	2	#10 x 3/4" SELF DRILLING SCREW	350247-35
9	1	WIRE PLUG PLATE	A003801
10	1	DRIVER SIDE/PASSENGER SIDE ARM	C002383
11	1	PASSENGER SIDE/DRIVER ARM	C002383
12	1	DRIVER SIDE RECEIVER	C003269
13	1	PASSENGER SIDE RECEIVER	C003270



BASEPLATE KIT INSTALLATION INSTRUCTIONS

KIT# 524452-5

10/13/22
KS

ROADMASTER, Inc. 6110 NE 127th Ave. Vancouver, WA 98682 360-896-0407 fax 360-735-9300 www.roadmasterinc.com

This baseplate is one of our direct-connect kits, which allows the visible front portion of the baseplate to be easily removed (Fig.A and Fig.B). The kit consists of the main receiver brace, removable front braces and a hardware pack.

The main receiver brace mounts to the front frame and bumper on each side. The removable front braces insert into the receivers on each side.

Before starting the installation, lay out the kit components in order, as they will be used. This will give you a visual idea of how the components work, and will also confirm that everything is present and accounted for.



IMPORTANT: All baseplates **must** be assembled with all the bolts left loose for final adjustment and positioning (before tightening) unless otherwise instructed. All bolts **must** be torqued for proper strength. If more than one bolt is used per fastening point, the diagram may only show one. Use flat washers over all slotted holes and lock washers on all fasteners.

WARNING

Failure to heed these warnings or follow the installation instructions may result in a voided warranty, loss of towed vehicle, personal injury or death.

- Do not weld or modify this baseplate or its components. Welding or modification will void the warranty.
- Do not use this document as a basis to design/fabricate a baseplate, as it may not show all parts or structural components.
- We strongly recommend professional installation.
- If the towed vehicle has been in an accident, it must be properly repaired before attaching the baseplate. Do not install the baseplate if any structural frame damage is found.
- The installer must use all bolts and parts supplied. If running changes were made by the vehicle manufacturer after this kit was designed, some bolts or other fasteners may no longer be the correct size. It is the installer's responsibility to verify this kit is securely fastened to the vehicle.
- Use Loctite® Red on all bolts used to secure this baseplate. Torque all bolts to the specifications found at the end of these instructions. Do not over-torque the bolts or failure may occur.
- The installer must inspect the baseplate to ensure adequate clearance, particularly around hoses, air conditioner lines, radiators, etc. or non-warranty failure may result.
- Roadmaster manufactures many styles of baseplates. If your baseplate has removable arms, they must be removed before driving the vehicle, unless the arms can be pinned or padlocked in place. If not secured, the arms could vibrate out.
- Some motorhome chassis have such a tight turning radius that you can damage your motorhome, towed vehicle, tow bar or baseplate while turning sharply. Before getting on the road, test your turning radius in an empty parking lot. Turning too sharply could result in non-warranty damage to your towing system, motorhome and/or towed vehicle.
- Do not back up with the towed vehicle attached or non-warranty damage will occur to your towing system or vehicles.
- The safety cables must connect the towing vehicle to the towed vehicle frame to frame, with the cables crossed, with enough slack for sharp turns. See cable instructions for proper routing. Failure to do so will result in non-warranty damage and/or the loss of the towed vehicle.
- This kit is designed for use with ROADMASTER tow bars and ROADMASTER adapters only. Using this kit with other brands, without an approved ROADMASTER adapter, may result in non-warranty damage or injury.
- Receiver extensions and out-of-level towing situations of 3 inches or more. This can cause the system to swing much higher and lower, causing excessive strain on the tow bar, baseplate and frame. That can cause the towing system to fail, causing property damage, personal injury or even death. If you must use a receiver extension or drop hitch to tow, it will reduce your receiver's weight capacity by 1/3 to avoid damaging your system. Never use more than one extension and/or drop hitch, as this will void your warranty.
- Every 3,000 miles, the owner must inspect all mounting points for cracks or fatigue, and check the fasteners for proper torque, according to the bolt torque requirements chart on the last page of these instructions.
- The owner must follow the vehicle manufacturer's instructions to prepare the vehicle for towing. Failure to do so may cause severe damage to the vehicle.
- This baseplate is only warranted for the original installation. Installing a used baseplate on another vehicle is not recommended and will void the warranty.

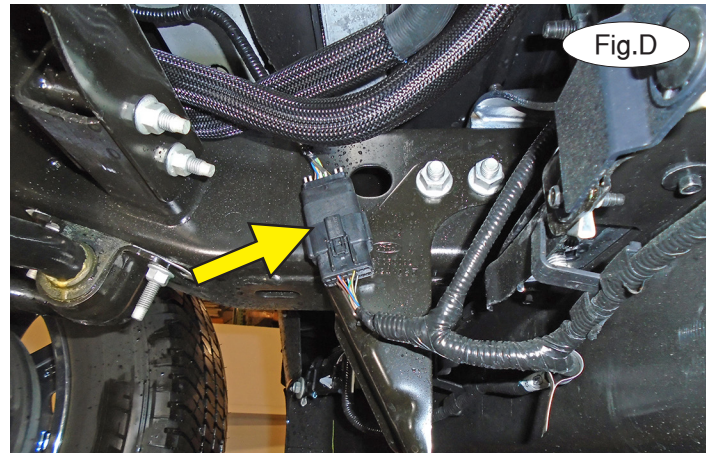
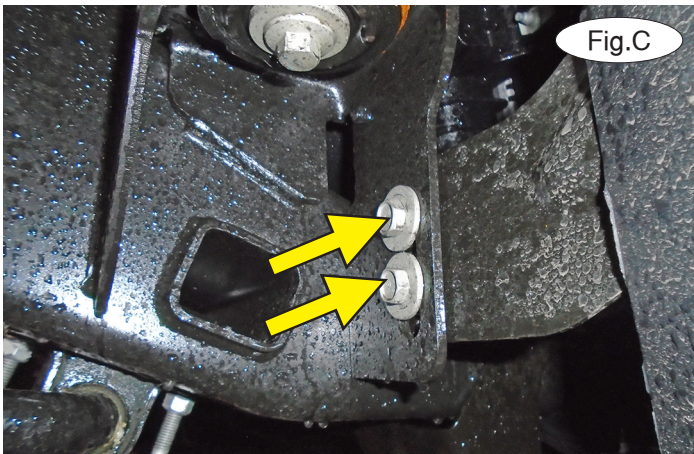


BASEPLATE KIT INSTALLATION INSTRUCTIONS

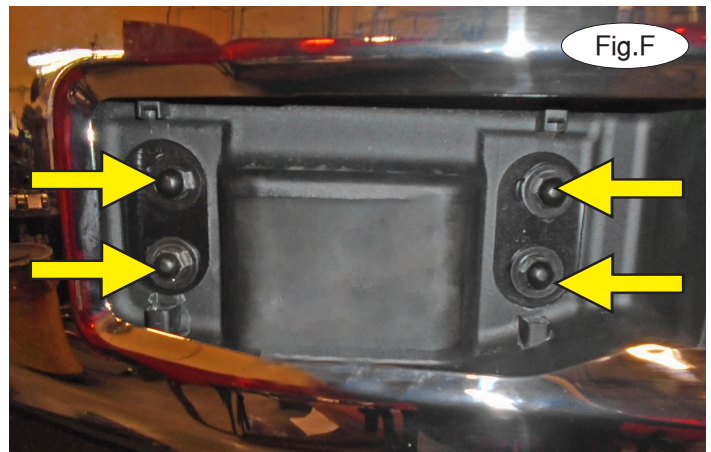
KIT# 524452-5

10/13/22
KS

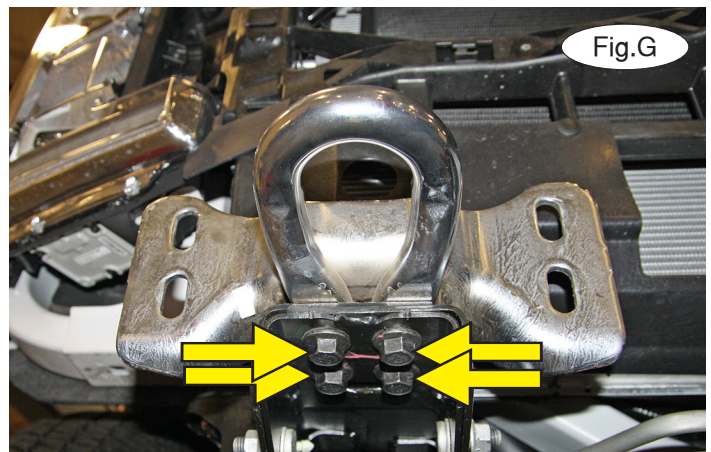
ROADMASTER, Inc. 6110 NE 127th Ave. Vancouver, WA 98682 360-896-0407 fax 360-735-9300 www.roadmasterinc.com



1. On each side, remove the two 18mm (head) bolts attaching the bumper to the frame (Fig.C). *Note:* due to manufacturing variances, the bolts may be 15mm.
2. On the driver's side, disconnect the electrical connector between the bumper and the frame (Fig.D). *Note:* you may also need to unplug the block heater, if the vehicle is so equipped. It can be located on either side of the vehicle. **For models with ACC:** proceed to the supplement at this time. **For all other models:** proceed to the next step.



3. On each side, remove the plastic bolt head covers surrounding the tow hook (Fig.E).
4. On each side, remove four 18mm (head) bolts and threaded double-nut plates on the backside, attaching the bumper to the frame (Fig.F). Then, remove the bumper and set it aside for now.
5. On each side, remove four 18mm (head) bolts attaching the tow hooks to the frame (Fig.G). The tow hooks will not be replaced. *Note:* retain the tow hooks for replacement in case the bracket is ever removed.



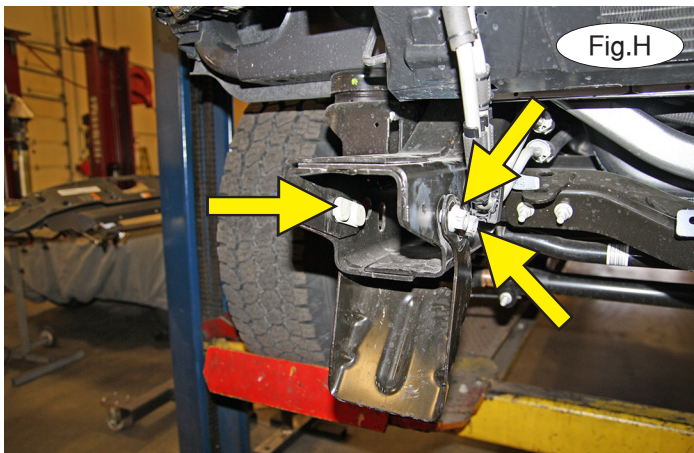


BASEPLATE KIT INSTALLATION INSTRUCTIONS

KIT# 524452-5

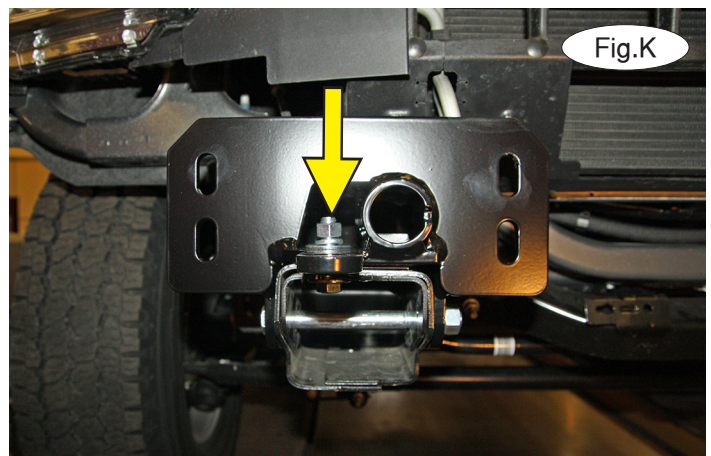
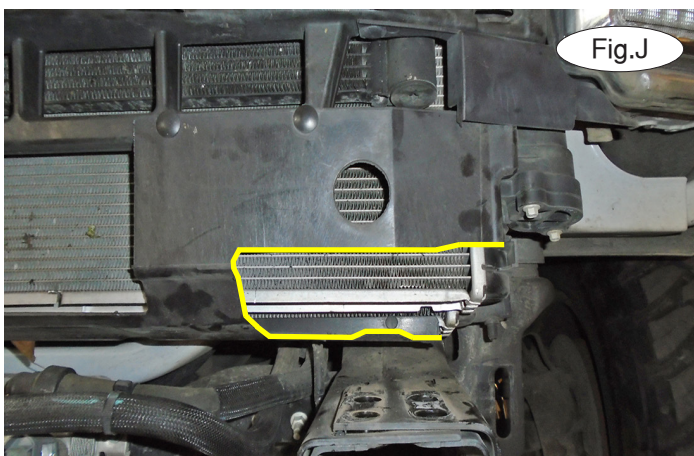
10/13/22
KS

ROADMASTER, Inc. 6110 NE 127th Ave. Vancouver, WA 98682 360-896-0407 fax 360-735-9300 www.roadmasterinc.com



6. On each side, remove four 18mm (head) nuts and a double backing plate attaching the frame guard to the frame rail (Fig.H). The frame guards will not be replaced. *Note:* retain the frame guards for replacement in case the baseplate is ever removed from the vehicle.

7. On each side, place the main receiver brace over the frame and bolt through the outside of the frame using the supplied 5/8" x 6½" bolt. Finish with two 5/8" lock washers and nuts (Fig.I). **For vehicles with dual radiators only:** On each side, trim the plastic shroud as shown in Figure J.

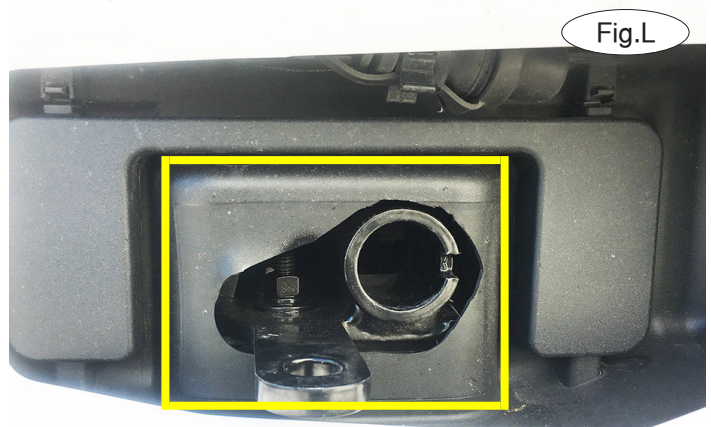


8. On each side, bolt up through the frame and the main receiver brace using the two supplied ½" x 2" bolts and ½" flat washers. Finish with two ½" flat washers, lock washers and nuts (Fig.K).

9. Tighten all bolts to the bolt torque requirements found at the end of these instructions. *Note:* use Loctite® Red on all nuts and bolts. Then, reinstall the bumper by reversing steps 1 through 4.

10. Trim the plastic inserts on the fascia as shown in Figure L or use the yellow lines to trim out a square section of the plastic.

11. **For models with ACC only:** Reinstall the grille, reversing steps 1 through 7 in the supplement. **For all other models:** proceed to the next step.





BASEPLATE KIT INSTALLATION INSTRUCTIONS

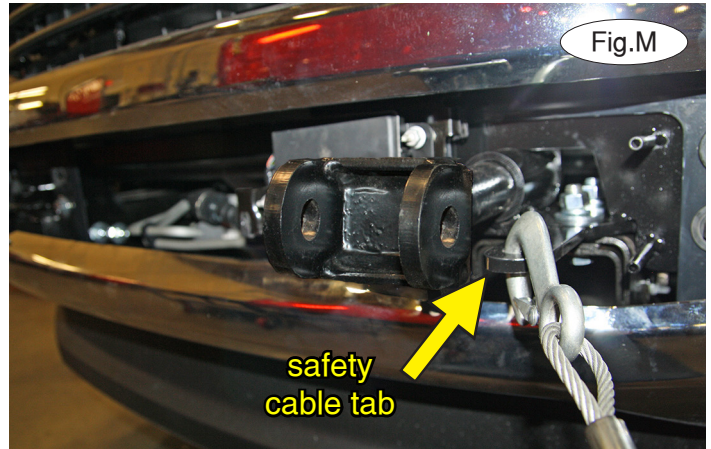
KIT# 524452-5

10/13/22
KS

ROADMASTER, Inc. 6110 NE 127th Ave. Vancouver, WA 98682 360-896-0407 fax 360-735-9300 www.roadmasterinc.com

12. On each side, insert the removable front arm into the front receiver 90 degrees from its final towing position, depressing the spring-loaded pin against the receiver. Twist back 90 degrees until the spring-loaded pin snaps into place in the notch on the receiver, locking the arm into place in its final towing position. **Please note: it is the owner's responsibility to ensure the locking of the pins before towing. Otherwise, failure of the towing system will result.**

13. Install the tow bar to the mounting bracket according to the manufacturer's instructions.



IMPORTANT!

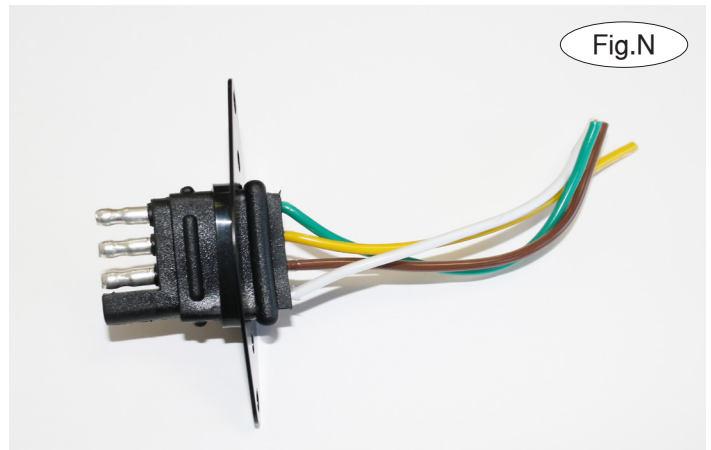
Safety cables are required by law. When towing, connect safety cables to the safety cable tabs illustrated in Figure M. Make certain there is adequate slack in the cables to allow a full turning radius; otherwise, damage will result. If necessary, longer cables or cable extensions are available.

Three options for attaching the wiring plug to the main receiver brace

For six-wire plugs: use the two supplied 3/4" self-tapping screws to attach the electrical plug directly to the rods on the front of the main receiver brace.

For four-wire round plugs: attach to the plug mounting plate and then use the two supplied 3/4" self-tapping screws to attach the mounting plate to the rods on the front of the main receiver brace.

For four-wire flat plugs: place the plug through the mounting plug plate, and then secure it using the supplied zip tie on the front of the plug (Fig.N). Use the two supplied 3/4" self-tapping screws to attach the mounting plate to the rods on the front of the main receiver brace.



BOLT TORQUE REQUIREMENTS

Note: The torque values represented below are intended as general guidelines. Torque requirements for specific applications may vary. Roadmaster does not warrant this information to be accurate for all applications and disclaims all liability for any claims or damages which may result from its use.

STANDARD BOLTS

Thread Size	Grade	Torque
5/16-18	5	13 ft./lb.
3/8-16	5	23 ft./lb.
7/16-14	5	37 ft./lb.
1/2-13	5	57 ft./lb.
5/8-11	5	112 ft./lb.

METRIC BOLTS

Thread Size	Grade	Torque
6mm-1.0	8.8	6 ft./lb.
8mm-1.0	8.8	18 ft./lb.
8mm-1.25	8.8	16 ft./lb.
10mm-1.25	8.8	36 ft./lb.
10mm-1.5	8.8	31 ft./lb.

METRIC BOLTS

Thread Size	Grade	Torque
12mm-1.25	8.8	64 ft./lb.
12mm-1.5	8.8	60 ft./lb.
12mm-1.75	8.8	55 ft./lb.
14mm-2.0	8.8	88 ft./lb.

All illustrations and specifications contained herein are based on the latest information available at the time of publication approval. ROADMASTER, INC. reserves the right to make changes at any time without notice in material, specification and models or to discontinue models.



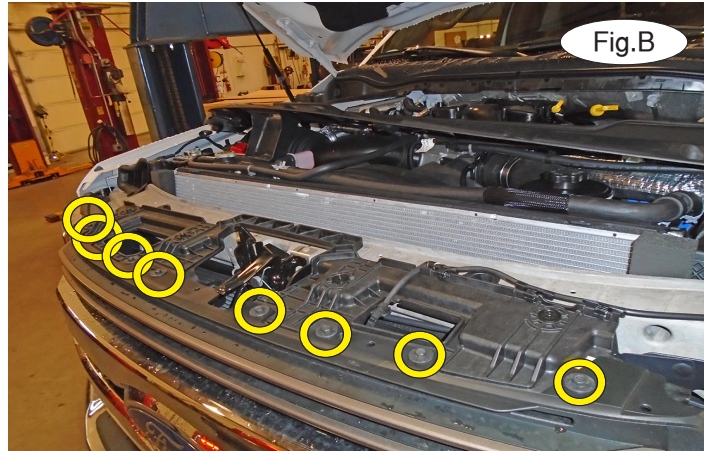
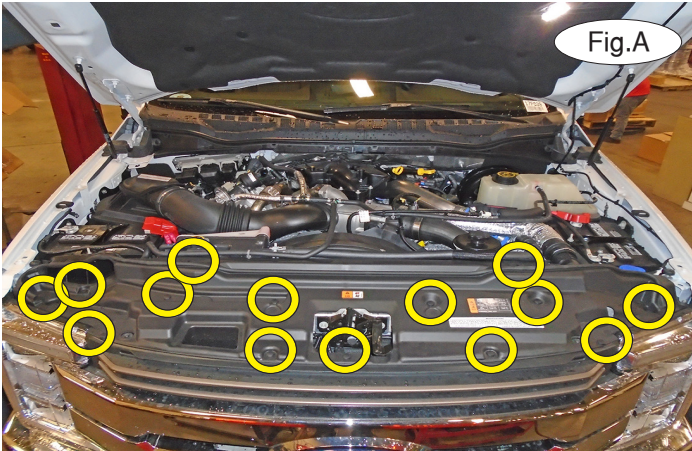
BASEPLATE KIT INSTALLATION INSTRUCTIONS

KIT# 524452-5

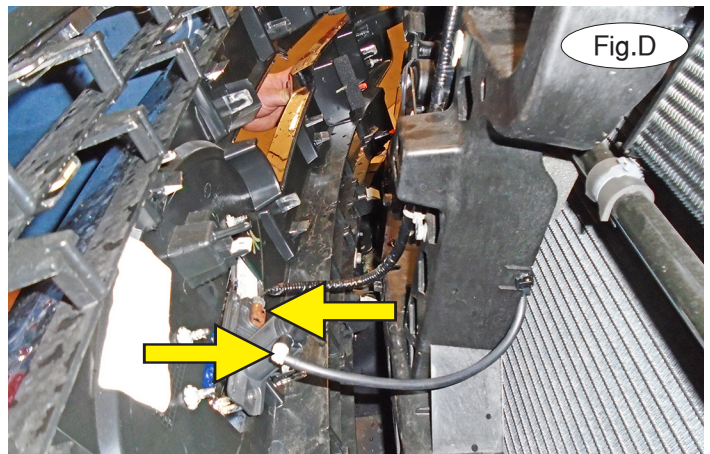
10/13/22
KS

ROADMASTER, Inc. 6110 NE 127th Ave. Vancouver, WA 98682 360-896-0407 fax 360-735-9300 www.roadmasterinc.com

Supplemental instructions for vehicles with ACC only



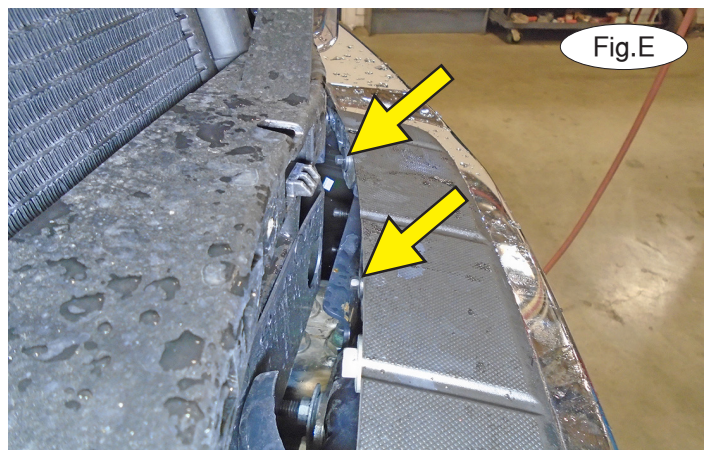
1. **Important:** please use all supplied bolts and parts and read all instructions carefully before beginning this installation. The majority of questions you may have can be answered within the text, and proper installation will ensure safe and secure travel. Now, begin the installation. Remove 14 plastic fasteners attaching the radiator cover to the core support (Fig.A).



2. Remove eight 10mm (head) bolts attaching the top of the grille to the core support (Fig.B).

3. Firmly grip the grille and pull hard, straight out on the bottom of it, to release the clips on the side and bottom of the grille (Fig.C). Disconnect the washer hose and the electrical connector from the back of the grille (Fig.D) and set the grille aside for now.

4. Remove two 8mm (head) screws attaching the top of the ACC bracket to the bumper (Fig.E).



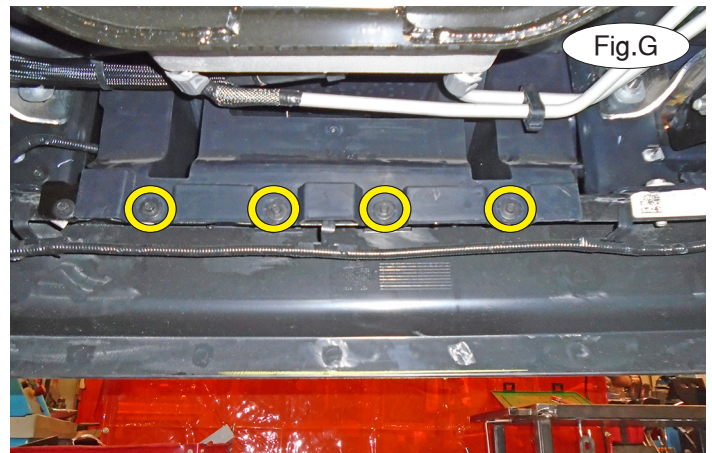
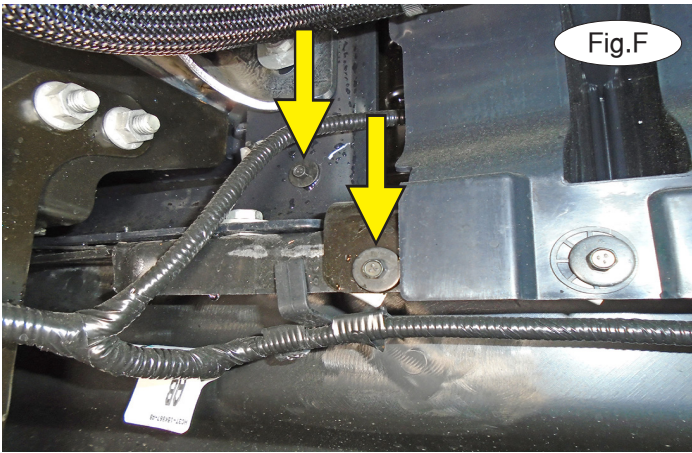


BASEPLATE KIT INSTALLATION INSTRUCTIONS

KIT# 524452-5

10/13/22
KS

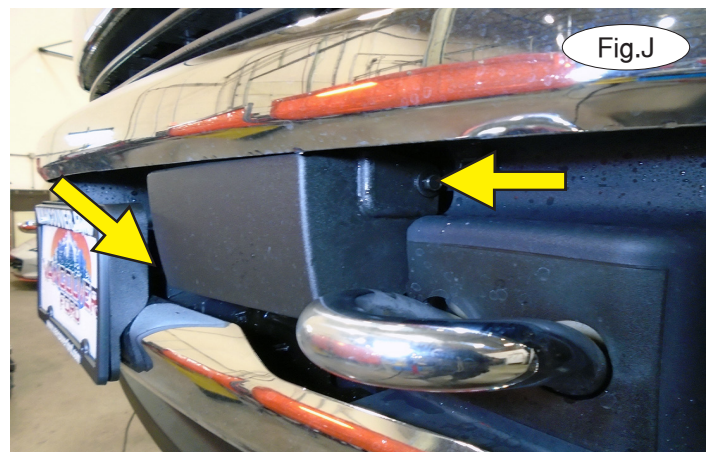
ROADMASTER, Inc. 6110 NE 127th Ave. Vancouver, WA 98682 360-896-0407 fax 360-735-9300 www.roadmasterinc.com



5. From the backside of the bumper, remove the two bottom 8mm (head) screws attaching the ACC bracket to the bumper (Fig.F).
6. Remove four 8mm (head) bolts attaching the air dam to the bumper (Fig.G).
7. On each side, remove one 8mm (head) bolt attaching the top of the air dam to the bumper (Fig.H – passenger side).



8. On each side, remove the plastic bolt head covers surrounding the tow hook (Fig.I). *Note:* the piece may look slightly smaller than it appears in Figure I.
9. On the driver's side only, remove two 10mm (head) bolts attaching the ACC cover to the ACC bracket (Fig.J).





BASEPLATE KIT INSTALLATION INSTRUCTIONS

KIT# 524452-5

10/13/22
KS

ROADMASTER, Inc. 6110 NE 127th Ave. Vancouver, WA 98682 360-896-0407 fax 360-735-9300 www.roadmasterinc.com

10. On each side, remove four 18mm (head) bolts and threaded double-nut plate on the backside attaching the bumper to the frame (Fig.K – arrows). Push the center air dam and ACC bracket aside to access two of the 18mm (head) bolts (Fig.K – circle indicates one of the two bolts). **Under no circumstance should you remove the ACC from its bracket. They are fine adjustment nuts and will need to be reset at the dealership if you do so.**

Now, return to step 5 in the regular instructions to finish the installation.

