



# BASEPLATE KIT INSTALLATION INSTRUCTIONS

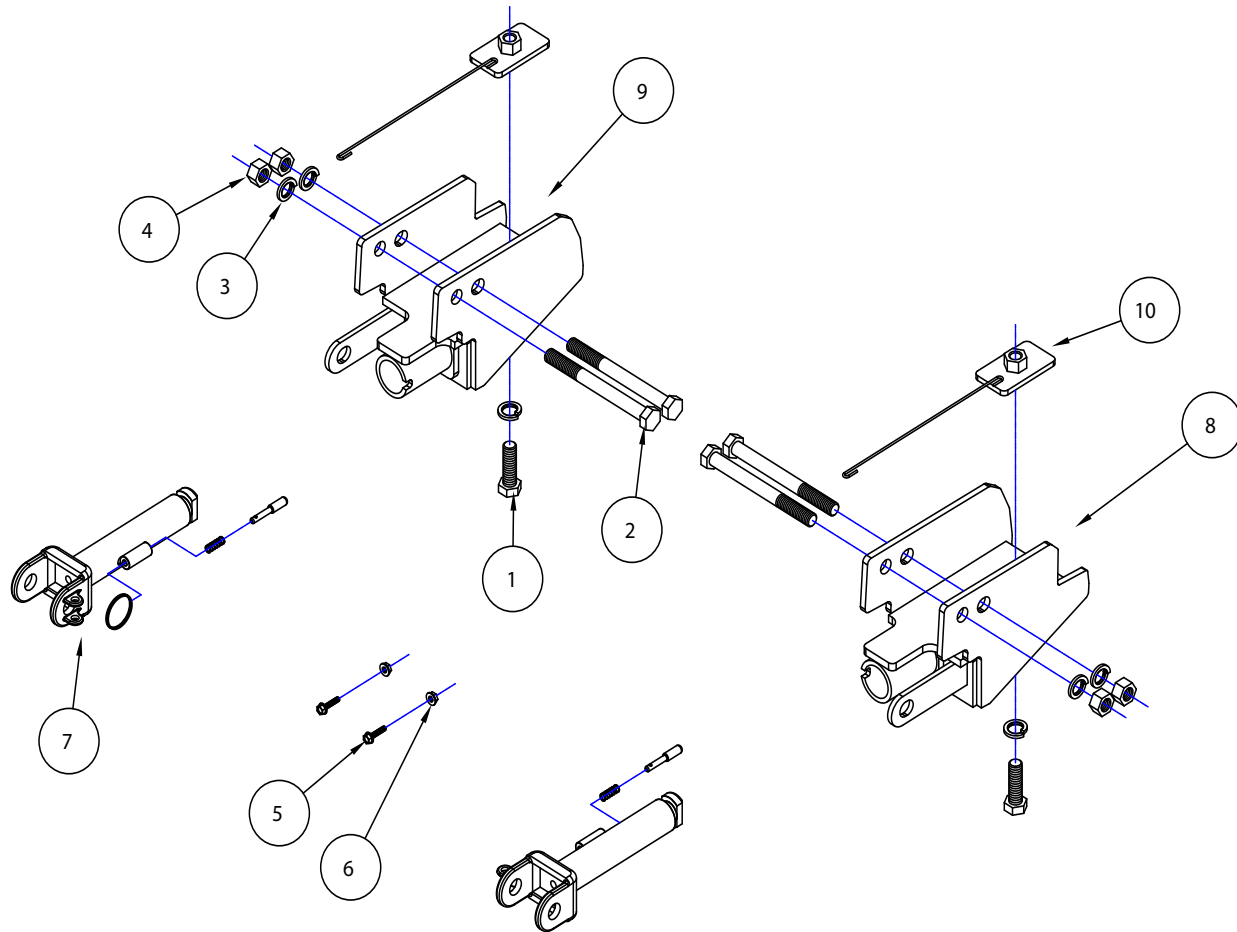
**KIT# 524466-5**

03/30/20  
KS

ROADMASTER, Inc. 6110 NE 127th Ave. Vancouver, WA 98682 360-896-0407 fax 360-735-9300 www.roadmasterinc.com

**Tools Required**  
Refer to the bolt torque requirements page for a list of all Recommended Tools.

**Important**  
Note: This baseplate will not accommodate the Guardian rock shield, some models of the Tow Defender, or the StowMaster and StowMaster All Terrain tow bars.



ITEM	QTY	NAME	MATERIAL
1.....	2.....	5/8" x 2" BOLT .....	350150-00
2.....	4.....	5/8" x 6 1/2" BOLT .....	350162-10
3.....	6.....	5/8" LOCK WASHER .....	350313-00
4.....	4.....	5/8" HEX NUT .....	350262-00
5.....	2.....	1/4"-20 x 1" HX WHIZ-LOK .....	350400-20
6.....	2.....	1/4"-20 WHIZ LOC HEX NUT .....	350251-20
7.....	2.....	ARM .....	C-002383
8.....	1.....	DRIVER SIDE RECEIVER.....	C-003527
9.....	1.....	PASSENGER SIDE RECEIVER.....	C-003528
10.....	2.....	2" x 3 1/2" NUTTED BACKING PLATE WITH 10" ROD .....	C-003530



# BASEPLATE KIT INSTALLATION INSTRUCTIONS

**KIT# 524466-5**

03/30/20  
KS

ROADMASTER, Inc. 6110 NE 127th Ave. Vancouver, WA 98682 360-896-0407 fax 360-735-9300 www.roadmasterinc.com

This is one of our direct-connect series, which allows the visible front portion of the baseplate to be easily removed from the front of the vehicle (Fig.A and Fig.B). This kit consists of two side-specific braces, two removable front braces, and a hardware pack.

The braces mount to the frame and the cross-bar. The removable front braces install in the main receiver brace.

Before starting the installation, lay out the kit components in order, as they will be used. This will give you a visual idea of how the components work, and will also confirm that everything is present and accounted for.



**IMPORTANT:** All baseplates **must** be assembled with all the bolts left loose for final adjustment and positioning (before tightening) unless otherwise instructed. All bolts **must** be torqued for proper strength. If more than one bolt is used per fastening point, the diagram may only show one. Use flat washers over all slotted holes and lock washers on all fasteners.

## WARNING

Failure to heed these warnings or follow the installation instructions may result in a voided warranty, loss of towed vehicle, personal injury or death.

- Do not weld or modify this baseplate or its components. Welding or modification will void the warranty.
- Do not use this document as a basis to design/fabricate a baseplate, as it may not show all parts or structural components.
- We strongly recommend professional installation.
- If the towed vehicle has been in an accident, it must be properly repaired before attaching the baseplate. Do not install the baseplate if any structural frame damage is found.
- The installer must use all bolts and parts supplied. If running changes were made by the vehicle manufacturer after this kit was designed, some bolts or other fasteners may no longer be the correct size. It is the installer's responsibility to verify this kit is securely fastened to the vehicle.
- Use Loctite® Red on all bolts used to secure this baseplate. Torque all bolts to the specifications found at the end of these instructions. Do not over-torque the bolts or failure may occur.
- The installer must inspect the baseplate to ensure adequate clearance, particularly around hoses, air conditioner lines, radiators, etc. or non-warranty failure may result.
- Roadmaster manufactures many styles of baseplates. If your baseplate has removable arms, they must be removed before driving the vehicle, unless the arms can be pinned or padlocked in place. If not secured, the arms could vibrate out.
- Some motorhome chassis have such a tight turning radius that you can damage your motorhome, towed vehicle, tow bar or baseplate while turning sharply. Before getting on the road, test your turning radius in an empty parking lot. Turning too sharply could result in non-warranty damage to your towing system, motorhome and/or towed vehicle.
- Do not back up with the towed vehicle attached or non-warranty damage will occur to your towing system or vehicles.
- The safety cables must connect the towing vehicle to the towed vehicle frame to frame, with the cables crossed, with enough slack for sharp turns. See cable instructions for proper routing. Failure to do so will result in non-warranty damage and/or the loss of the towed vehicle.
- This kit is designed for use with ROADMASTER tow bars and ROADMASTER adapters only. Using this kit with other brands, without an approved ROADMASTER adapter, may result in non-warranty damage or injury.
- Receiver extensions and out-of-level towing situations of 3 inches or more. This can cause the system to swing much higher and lower, causing excessive strain on the tow bar, baseplate and frame. That can cause the towing system to fail, causing property damage, personal injury or even death. If you must use a receiver extension or drop hitch to tow, it will reduce your receiver's weight capacity by 1/3 to avoid damaging your system. Never use more than one extension and/or drop hitch, as this will void your warranty.
- Every 3,000 miles, the owner must inspect all mounting points for cracks or fatigue, and check the fasteners for proper torque, according to the bolt torque requirements chart on the last page of these instructions.
- The owner must follow the vehicle manufacturer's instructions to prepare the vehicle for towing. Failure to do so may cause severe damage to the vehicle.
- This baseplate is only warranted for the original installation. Installing a used baseplate on another vehicle is not recommended and will void the warranty.

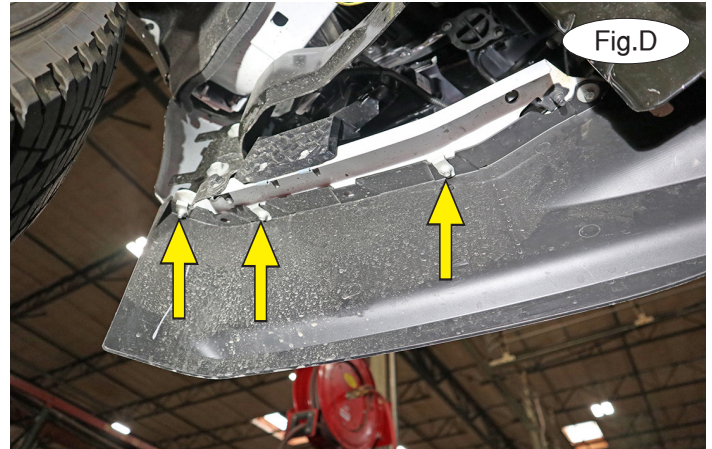
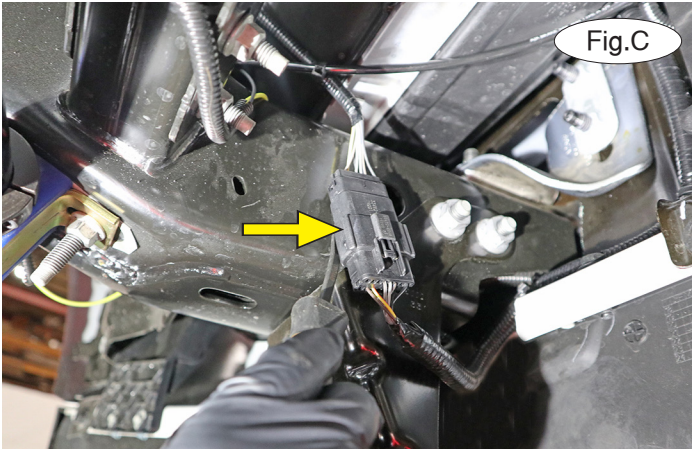


# BASEPLATE KIT INSTALLATION INSTRUCTIONS

**KIT# 524466-5**

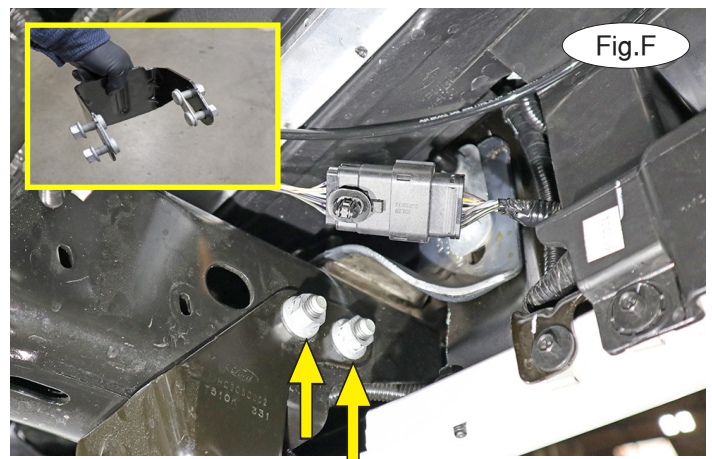
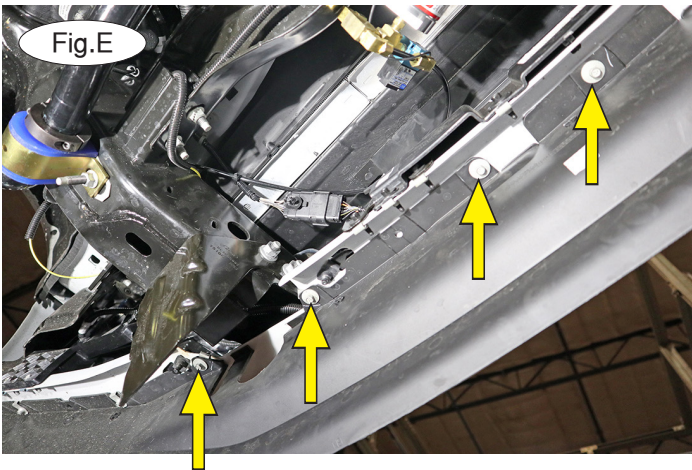
03/30/20  
KS

ROADMASTER, Inc. 6110 NE 127th Ave. Vancouver, WA 98682 360-896-0407 fax 360-735-9300 www.roadmasterinc.com



1. **Important:** please use all supplied bolts and parts and read all instructions carefully before beginning this installation. The majority of questions you may have can be answered within the text, and proper installation will ensure safe and secure travel. Now, begin the installation. On the driver's side only, detach the wiring harness plug from the inside of the frame (Fig.C).

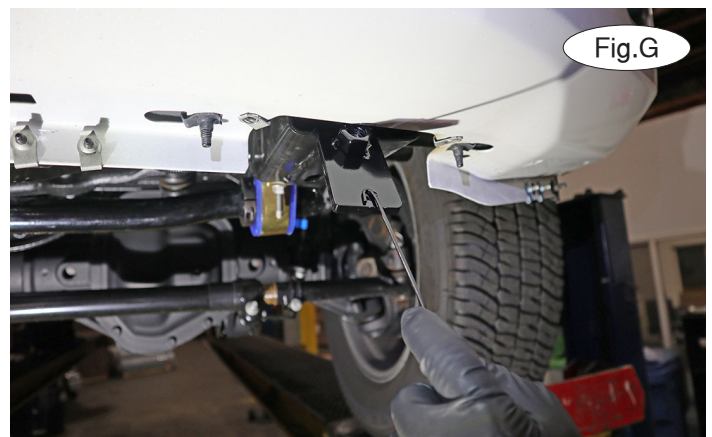
2. On each side, use an 8mm socket to remove three bolts attaching the end of the air dam to the bumper (Fig.D). Note: The arrows in Figure D denote the bottom of the bolts. You must access from above.



3. Using the same socket, on the driver's side, remove four bolts attaching the air dam to the bumper (Fig.E). Then, remove three on the passenger side. Set the air dam aside for now.

4. On each side, use an 18mm deep socket to remove four nuts and two threaded backing plates attaching the frame guard to the frame rail (Fig.F and Fig.F – inset). The frame guards will not be replaced. *Note:* Retain the frame guards and their hardware for replacement in case the baseplate is ever removed from the vehicle.

5. Working on the driver's side only, install one of the supplied nutted backing plates with rod into the end of the frame rail (Fig.G) and center it over the existing slotted hole (Fig.H – next page).



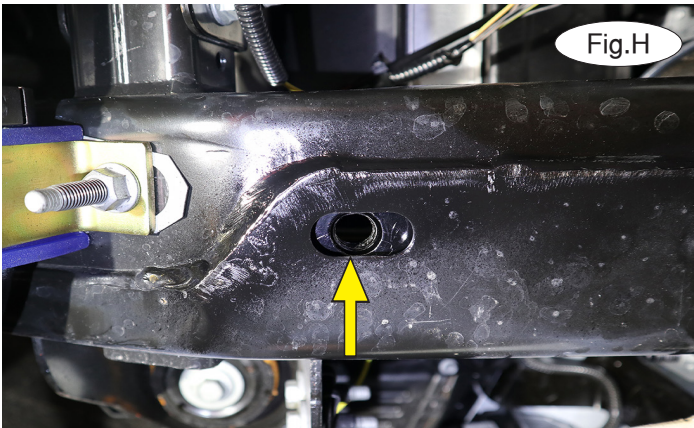


# BASEPLATE KIT INSTALLATION INSTRUCTIONS

**KIT# 524466-5**

03/30/20  
KS

ROADMASTER, Inc. 6110 NE 127th Ave. Vancouver, WA 98682 360-896-0407 fax 360-735-9300 www.roadmasterinc.com



6. Place a 5/8" lock washer over a 5/8" x 2½" bolt. Then, locate the side-specific brace using the drawing on page 1 as a reference. Slide it up over the frame at an angle, pushing it in place so that the hole in the bottom aligns with the slotted hole and nutted backing plate installed in the previous step (Fig.I). Then, bolt up through the side-specific brace and nutted backing plate using the 5/8" bolt you prepared earlier in this step (Fig.J). Finger tighten the bolt only at this point. *Note:* Ensure that the rod from backing plate remains toward the inside of the brace, as it will need to be bent out of the way at the end of the installation.

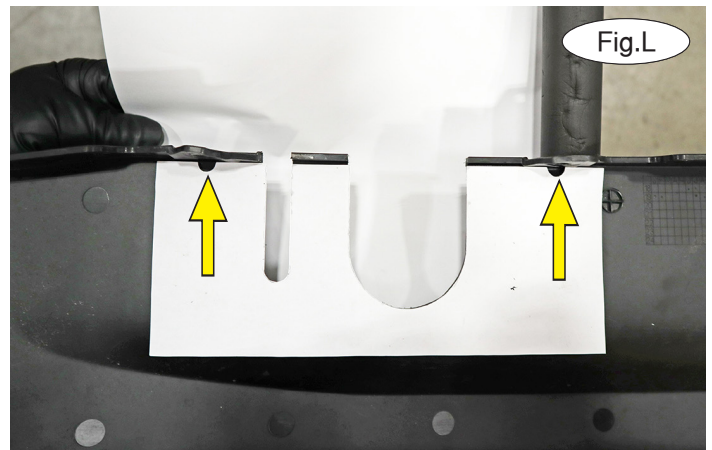


7. Slide the brace so that the holes on the inside now align with the frame guard mounts exposed in step 4. Bolt from the inside to the outside using two 5/8" x 6" bolts. Finish each bolt with a 5/8" lock washer and 5/8" nut (Fig.K).

8. Tighten the bottom 5/8" bolt first and then the two side 5/8" bolts. Use Loctite® Red on all three bolts. Then, bend away the rod from the backing plate and push it up behind the bumper so it is out of the way.

9. Repeat steps 5 through 8 for the passenger side of the vehicle.

10. Turn over the air dam. Cut out the shaded area of the template on the last page and align the cutouts with the bolt holes on the driver's side (Fig.L – arrows). *Note:* The smaller cutout should be to the outside of the vehicle. Mark and trim it, and then flip the template over and trim the passenger side. Reinstall the air dam.





# BASEPLATE KIT INSTALLATION INSTRUCTIONS

**KIT# 524466-5**

03/30/20  
KS

ROADMASTER, Inc. 6110 NE 127th Ave. Vancouver, WA 98682 360-896-0407 fax 360-735-9300 www.roadmasterinc.com



11. If you are installing a braking system, install the Breakaway switch as shown in Figure M.

12. When wiring the vehicle, we recommend mounting the plug to the driver's side tow hook cover. Use a flathead screwdriver to release the inside edge of the tow hook cover (Fig.N). Align the hinged side of the plug with the vertical wall and drill a 1 1/4" hole for the main body of the plug and 1/4" holes for the hardware. Mount it to the tow hook cover using the two supplied 1/4" x 1" whiz bolts and 1/4" whiz nuts (Fig.O and P). *Note:* It is important that the plug is mounted as far to the outside as possible to avoid contacting the ACC sensor, if the vehicle is so equipped.



13. On each side, insert the removable front arm into the front receiver 90 degrees from its final towing position, depressing the spring-loaded pin against the receiver. Twist back 90 degrees until the spring-loaded pin snaps into place in the notch on the receiver, locking the arm into place in its final towing position. **Please note: it is the owner's responsibility to ensure the locking of the pins before towing. Otherwise, failure of the towing system will result.**

14. Install the tow bar to the mounting bracket according to the manufacturer's instructions.



## **IMPORTANT!**

**Safety cables are required by law. When towing, connect safety cables to the safety cable tabs illustrated on the first page and in Figure Q. Make certain there is adequate slack in the cables to allow a full turning radius; otherwise, damage will result. If necessary, longer cables or cable extensions are available.**



# BASEPLATE KIT INSTALLATION INSTRUCTIONS

**KIT# 524466-5**

03/30/20  
KS

ROADMASTER, Inc. 6110 NE 127th Ave. Vancouver, WA 98682 360-896-0407 fax 360-735-9300 www.roadmasterinc.com

## Recommended Tools

- Scissors for template
- 11mm wrench
- 8mm socket and ratchet
- Reciprocating saw for trimming
- Loctite© Red
- 18mm deep socket and ratchet
- 15/16" socket
- 15/16" wrench
- 3/8" nut driver or socket

## BOLT TORQUE REQUIREMENTS

Note: The torque values represented below are intended as general guidelines. Torque requirements for specific applications may vary. Roadmaster does not warrant this information to be accurate for all applications and disclaims all liability for any claims or damages which may result from its use.

### STANDARD BOLTS

Thread Size	Grade	Torque
5/16-18	5	13 ft./lb.
3/8-16	5	23 ft./lb.
7/16-14	5	37 ft./lb.
1/2-13	5	57 ft./lb.
5/8-11	5	112 ft./lb.

### METRIC BOLTS

Thread Size	Grade	Torque
6mm-1.0	8.8	6 ft./lb.
8mm-1.0	8.8	18 ft./lb.
8mm-1.25	8.8	16 ft./lb.
10mm-1.25	8.8	36 ft./lb.
10mm-1.5	8.8	31 ft./lb.

### METRIC BOLTS

Thread Size	Grade	Torque
12mm-1.25	8.8	64 ft./lb.
12mm-1.5	8.8	60 ft./lb.
12mm-1.75	8.8	55 ft./lb.
14mm-2.0	8.8	88 ft./lb.

All illustrations and specifications contained herein are based on the latest information available at the time of publication approval. ROADMASTER, INC. reserves the right to make changes at any time without notice in material, specification and models or to discontinue models.

**KIT# 524466-5**

**03/30/20**  
KS

