



Installation Instructions

Axle Mount Kit for Sprinter Van 2500 Models

part #590064-00

Note: This kit should only be used in conjunction with the 1209-128 rear anti-sway bar kit.

INTRODUCTION

Thank you for purchasing this axle mounting kit. This kit is designed to improve the handling characteristics of your Sprinter Van 2500 by reducing the body roll and balancing the weight transfer during cornering. The bushing kit is engineered for long life and trouble-free performance.

All the hardware needed for installation is included in this kit. Refer to the PARTS LIST in these instructions to identify the parts.

SUGGESTED TOOLS

The following tools are suggested to complete the installation procedures:

- General hand tools

WARNING

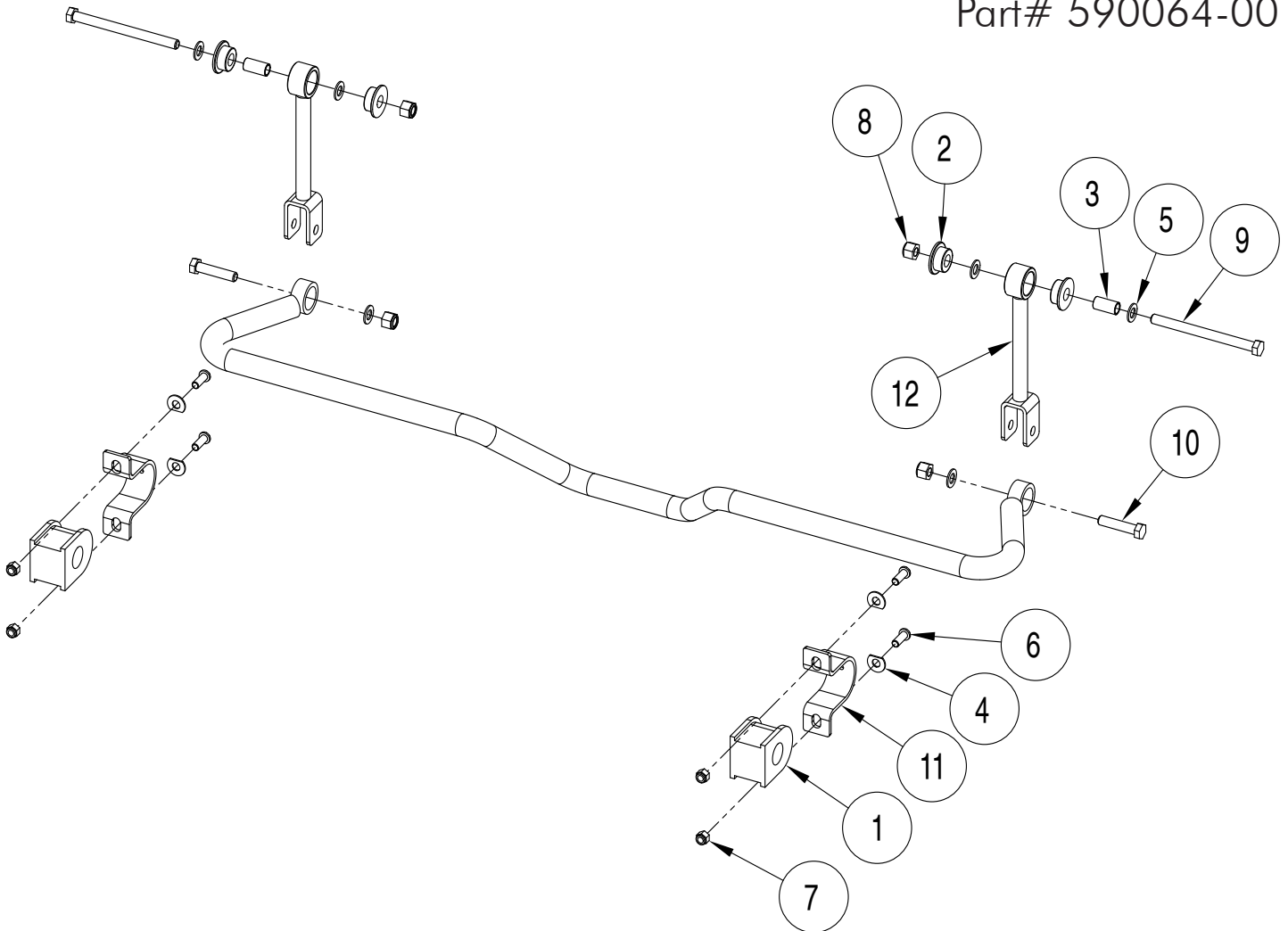
Failure to follow these instructions can result in property damage, personal injury or even death.

- If raising the vehicle to install the anti-sway bar, always support the vehicle with jack stands at both frame rails or at the rear axle before working underneath. Ensure that the jack stands are securely positioned, and are rated at or above the weight of the vehicle.
- The installer must read the instructions and use all bolts and parts supplied. Use only the parts supplied by ROADMASTER to install this kit.
- Minor modifications are sometimes necessary due to slight vehicle variations, even for the same year, make and model.
- Regardless of year, make and model, a wide range of options for specific applications may or may not interfere with the installation. It is the installer's responsibility to make certain that equipment is not damaged once the suspension solution travels through the full range of motion. Failure to ensure adequate clearance could result in non-warranty property damage, personal injury or even death.
- If running changes were made by the manufacturer after this kit was designed, there may be weldments, braces, gussets, or other structural items which interfere with the installation. It is the installer's responsibility to allow for these running changes without sacrificing the structural integrity of the anti-sway bar. Failure to securely fasten the anti-sway bar could result in property damage, personal injury or even death.
- ROADMASTER will not be responsible for any damage or injury resulting from any modification or alteration.
- Check ALL the fasteners for tightness before and after road testing the vehicle.
- Do not use this document for custom fabrication, as it may not show all parts or structural components.
- Do not use an air impact wrench when re-installing bolts, as stripped threads may result.
- This anti-sway bar is only warranted for the original installation. Installing a used anti-sway bar on another vehicle is not recommended and will void the warranty.

INSTALLATION

The following instructions must be followed in the order listed to ensure a proper installation and to preserve the ROADMASTER warranty.

Part# 590064-00



ITEM	QTY	DESCRIPTION	PART NUMBER
1.....	2.....	BUSHING.....	205218-10
2.....	4.....	BUSHING.....	205223-00
3.....	2.....	BUSHING SLEEVE.....	205516-00
4.....	4.....	CLIPPED WASHER.....	350304-30
5.....	6.....	M12 FLAT WASHER.....	355720-00
6.....	4.....	M10 x 25 mm SOCKET HEAD CAPSCREW.....	356109-50
7.....	4.....	M10 x 1.5 NYLON INSERT LOCK NUT.....	356230-20
8.....	4.....	M12 x 1.5 NYLON INSERT LOCK NUT.....	356241-20
9.....	2.....	M12 x 1.5 x 150 mm BOLT - CLASS 10.9.....	357011-50
10.....	2.....	M12 x 1.5 x 55 mm BOLT - CLASS 10.9.....	357106-50
11.....	2.....	BUSHING CLAMP.....	B140
12.....	2.....	END LINK.....	B715
13.....	1.....	LOCTITE.....	200544-00
14.....	1.....	AQUALUBE.....	400011-30

INSTALLATION

The following instructions must be followed in the order listed to ensure a proper installation and to preserve the ROADMASTER warranty.

1. On each side, attach the endlinks to the undercarriage using the 12mm x 1.5 x 140mm hex bolts, 12mm washers and 12mm locknuts. Note: Use Loctite on the bolts.
2. Assemble the endlinks as shown on the previous page.
3. Attach the anti-sway bar to the endlinks using the supplied 12mm x 1.5 x 55mm hex bolts, 12mm washers and 12mm locknuts.
4. Rotate the anti-sway bar up into place and attach the bushing clamps to secure the middle of the bar to the axle using the supplied B140 bushing clamps, bushings, 10mm x 1.5 x 25mm capscrews and 10mm Nylock nuts.
5. Tighten all hardware and test drive. Recheck the fasteners after test driving the vehicle.

WARNING

After road testing, re-check all fasteners for proper tightness — if a fastener has worked loose or fallen off, re-tighten or replace it. Without all kit components properly tightened or in place, the anti-sway bar will not stabilize the vehicle at full capacity, which may cause reduced cornering ability or other reductions in vehicle handling or performance.

Failure to follow these instructions may result in property damage, personal injury or even death.