

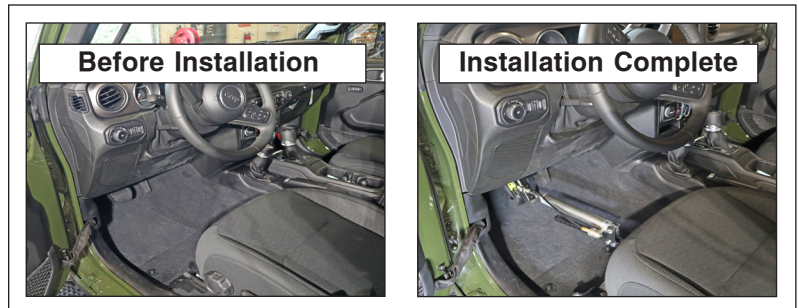
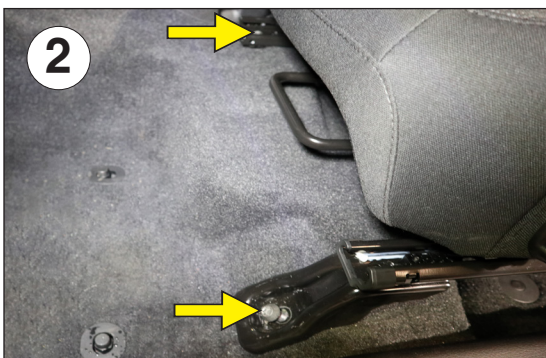
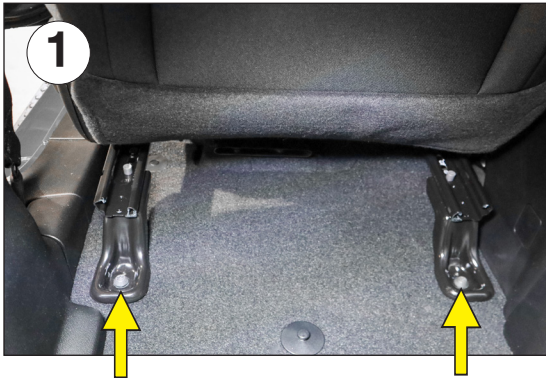
SEAT ADAPTER KIT #88362 INSTALLATION INSTRUCTIONS



#6058-00 06-20

ALL SPECIFICATIONS ARE SUBJECT TO CHANGE WITHOUT NOTICE

ROADMASTER, Inc. 6110 NE 127th Ave. Vancouver, WA 98682 360-896-0407 fax 360-735-9300 www.roadmasterinc.com



Instructions

1. Push the driver's seat all the way forward and loosen (but do not remove) the two rear seat track T50 Torx bolts (Fig.1). Then, slide the seat all the way back and remove the two T50 Torx bolts attaching the seat rails to the floor pan (Fig.2).

2. Press the seat toward the back of the vehicle and slide the seat adapter under the seat tracks, with the large round hole toward the center of the vehicle. Then, place a 1" O.D. x .188 wall x 1½" pipe spacer between the adapter and the outside of the seat rail on the driver's side. Then bolt it into place on the driver's side of the vehicle using an M10 x 1.5 x 75mm bolt, 10mm lock washer and 3/8" flat washer (Fig.3). Then, replace the passenger side bolt. Re-tighten the rear bolts.

3. Attach the BrakeMaster to the brake pedal and to the seat adapter. Adjust the length of the air cylinder assembly per the BrakeMaster installation instructions, ensuring that the BrakeMaster is pulling back on the brake pedal so the pedal is only depressed when the brakes are engaged at the motorhome. Failure to adjust the assembled length of the BrakeMaster may result in severe brake system damage and/or complete failure of the brakes. Now, tighten all bolts.

Parts List

- (1) M10 lock washer
- (1) 3/8" flat washer
- (1) M10 x 1.5 x 75mm bolt
- (1) 1" O.D. x .188 wall x 1½" pipe spacer

IMPORTANT

Once the seat adapter has been installed, carefully run the seat through its full range of motion. If it is impeded in any way, immediately stop and correct the interference. Failure to do so may result in non-warranty property damage.