



Time Tested • Time Proven

855720-02 03.21

ROADMASTER, Inc. 6110 NE 127th Ave. Vancouver, WA 98682 800-669-9690 Fax: 360-735-9300 www.roadmasterinc.com

Replacement power cord

for the Nighthawk tow bar, part number 1676-7R

Installation instructions

All specifications are subject to change without notice.

WARNING

Read all instructions before installing this product. Failure to understand how to properly install the power cord could result in property damage, personal injury or even death.



Instructions

1. Remove the screw, split washer and clamp (Figure 1).
2. Remove the 6-wire plug from the end of the cord.
3. Pull the cord until the shrink wrap around the LED wiring (Figure 2) is exposed, and cut the LED wiring.
4. Remove the original power cord.
5. Insert the replacement power cord into the same channel as the original, and in the same orientation.
6. Using the supplied heat-shrink butt connectors, attach the new LED wiring to the LED wiring you cut in step 3. Attach red to red and black to black (Figure 3).
7. Seal the butt connectors with a heat gun to make a waterproof connection.
8. Rotate the power cord until the red and black LED wiring is in the recessed LED channel (Figure 1).

Secure the power cord to the Nighthawk using the clamp, split washer and screw you removed in step 1.

WARNING

The screw used to secure the clamp is a very specific length. Any shorter and it won't properly hold the clamp. Any longer and the threads will stick too far inside the tow bar, interfering with internal components.

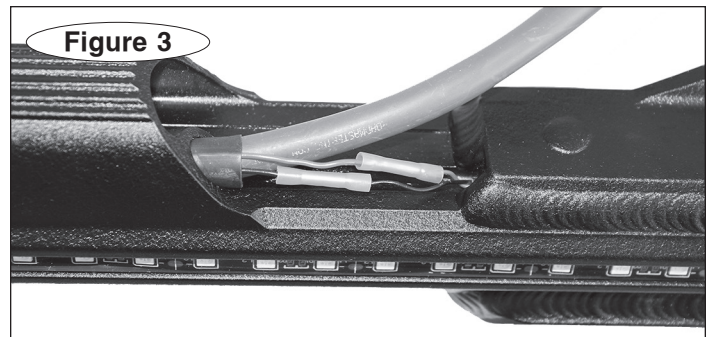
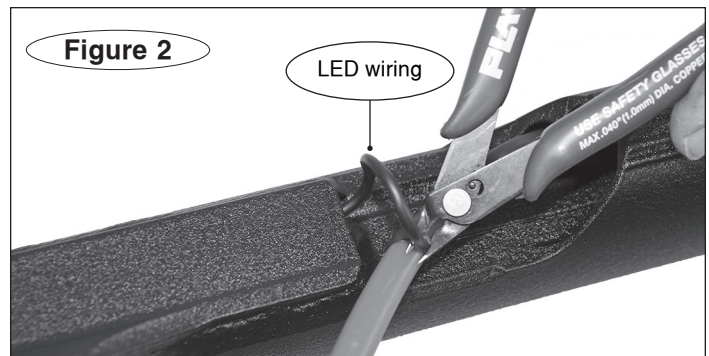
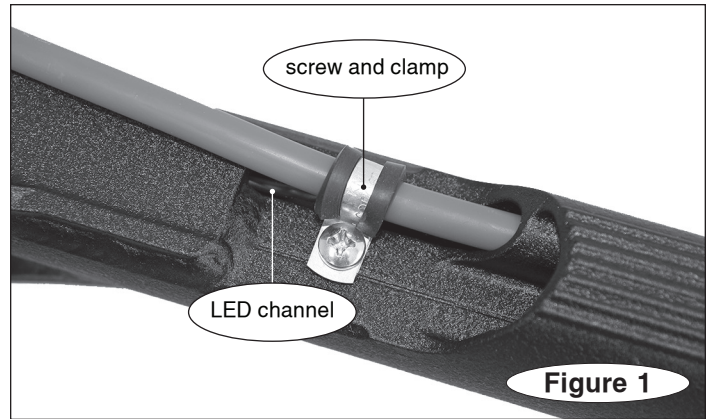
Use of an incorrect screw, split washer or clamp will damage tow bar components and prevent the tow bar from locking properly, which may cause interference with the inner arm operation, preventing the tow bar from automatically extending, self-centering and locking.

Damage to the tow bar may result, which may cause failure of the towing system and loss of the towed vehicle. Other consequential, non-warranty damage may also occur.

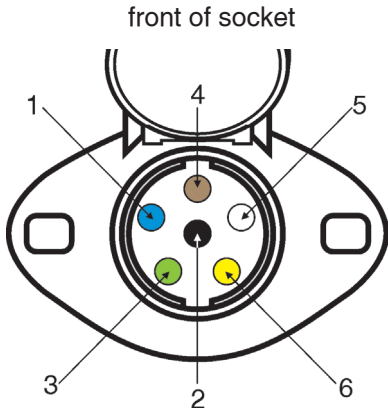
9. Attach the new 6-wire plug. Refer to the wiring diagrams on the next page.
10. Before towing, ensure that the towed vehicle's lights work in conjunction with the motorhome's.

WARNING

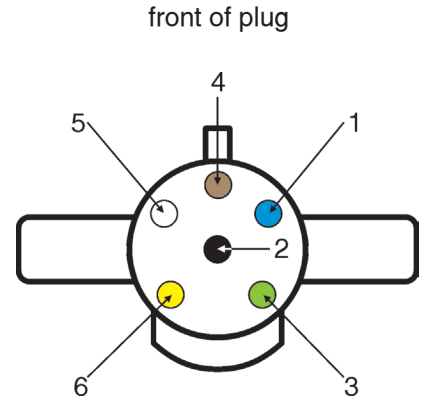
Make certain that the towed vehicle's lighting corresponds to the motorhome's. Otherwise, drivers behind the towed vehicle will not be aware when the motorhome is braking or turning.



6-wire socket and plug



Socket Pin Number	Wire Color	Motorhome/ Towed Vehicle
1	Blue	Brake monitor light
2	Black	Auxiliary/Charge
3	Green	Right Turn/Stop
4	Brown	Taillights
5	White	Ground
6	Yellow	Left Turn/Stop



Safety Definitions

These instructions contain information that is very important to know and understand. This information is provided for **safety** and to **prevent equipment problems**. To help recognize this information, observe the following symbols:

WARNING

WARNING indicates a potentially hazardous situation which, if not avoided, could result in property damage, serious personal injury or even death.

CAUTION

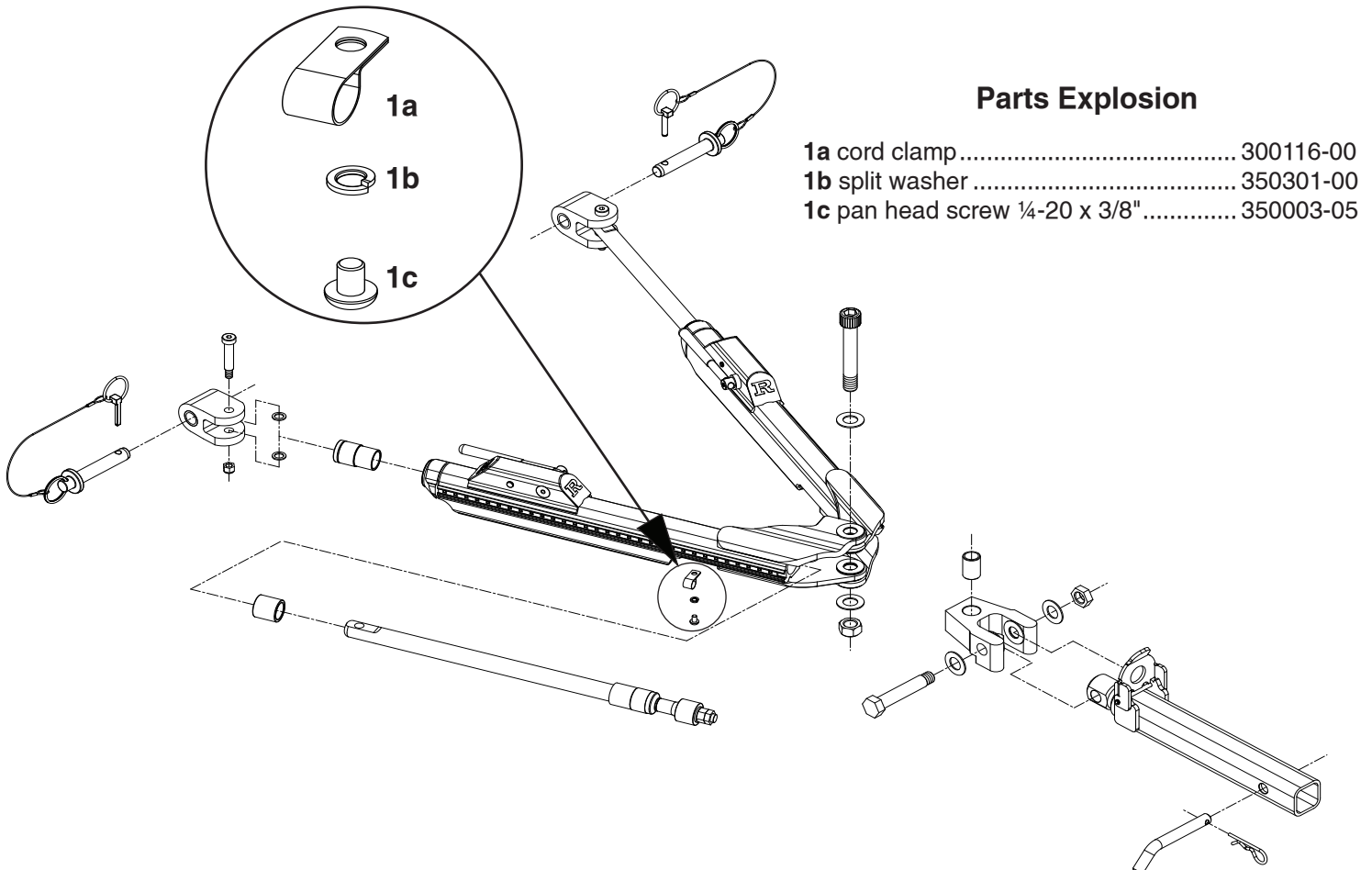
CAUTION indicates a potentially hazardous situation which, if not avoided, may result in property damage, or minor or moderate personal injury.

CAUTION

CAUTION used without the safety alert symbol indicates a potentially hazardous situation which, if not avoided, may result in property damage.

NOTE

Refers to important information and is placed in italic type. It is recommended that you take special notice of these items.



Parts Explosion

1a cord clamp	300116-00
1b split washer	350301-00
1c pan head screw 1/4-20 x 3/8"	350003-05