



Installation Instructions

Thank you for purchasing this anti-sway bar kit. Please read through these instructions before installation.

Front Anti-Sway Bar Kit for F53 V8 Class A Chassis

part #1139-218
2-1/8" diameter



INTRODUCTION

Thank you for purchasing this anti-sway bar kit. This kit is designed to improve the handling characteristics of your F53 Chassis by reducing the body roll and balancing the weight transfer during cornering. The anti-sway bar kit is engineered for long life and trouble-free performance.

All the hardware needed for installation is included in this kit. Refer to the PARTS LIST in these instructions to identify the parts.

SUGGESTED TOOLS

The following tools are suggested to complete the installation procedures:

- Standard and metric hand tools
- 15mm, 21mm and 15/16" sockets
- 18mm and 15/16" wrenches
- Second person

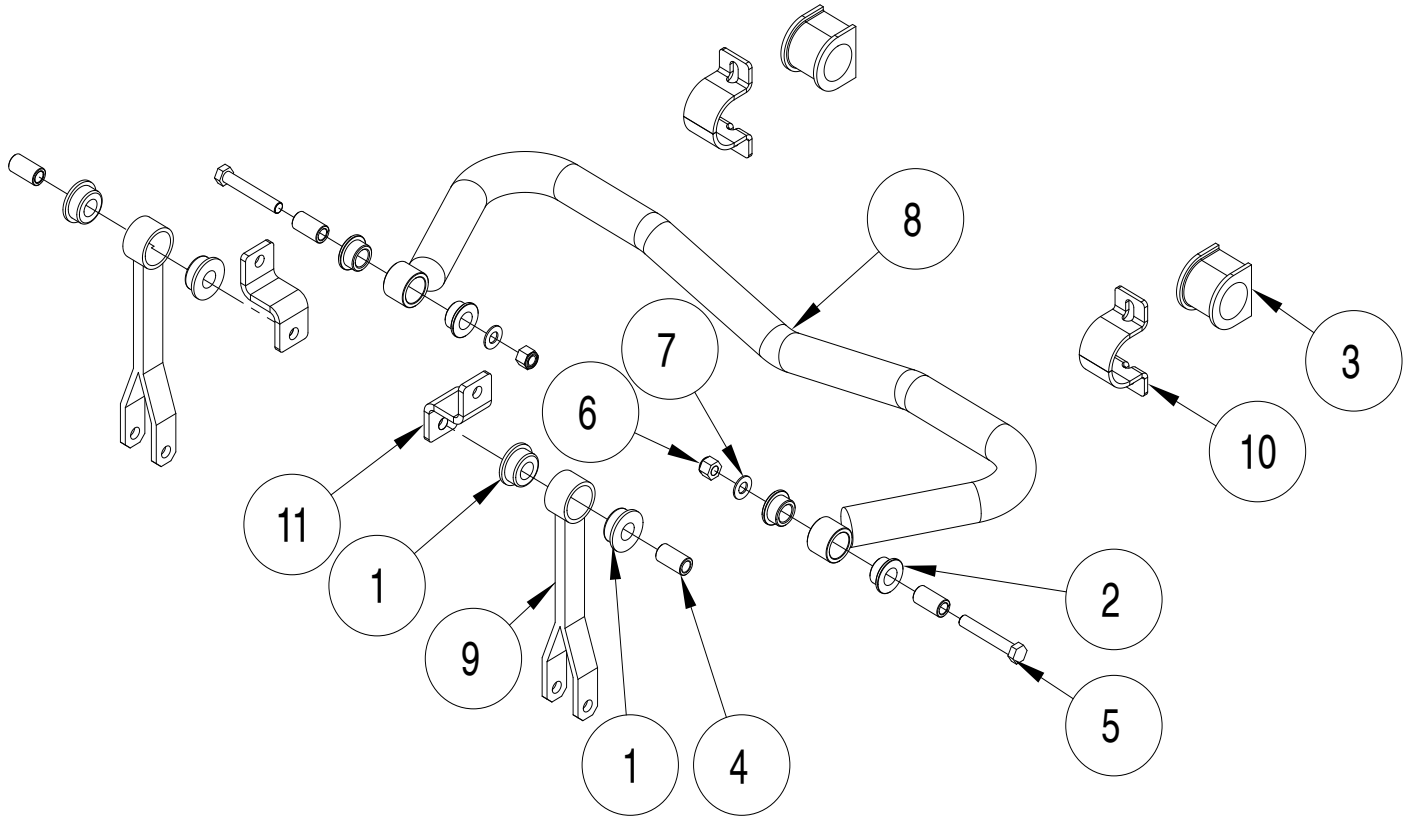
WARNING

Failure to follow these instructions can result in property damage, personal injury or even death.

- If raising the vehicle to install the anti-sway bar, always support the vehicle with jack stands at both frame rails or at the rear axle before working underneath. Ensure that the jack stands are securely positioned, and are rated at or above the weight of the vehicle.
- The installer must read the instructions and use all bolts and parts supplied. Use only the parts supplied by ROADMASTER to install this kit.
- Minor modifications are sometimes necessary due to slight vehicle variations, even for the same year, make and model.
- Regardless of year, make and model, a wide range of options for specific applications may or may not interfere with the installation. It is the installer's responsibility to make certain that equipment is not damaged once the suspension solution travels through the full range of motion. Failure to ensure adequate clearance could result in non-warranty property damage, personal injury or even death.
- If running changes were made by the manufacturer after this kit was designed, there may be weldments, braces, gussets, or other structural items which interfere with the installation. It is the installer's responsibility to allow for these running changes without sacrificing the structural integrity of the anti-sway bar. Failure to securely fasten the anti-sway bar could result in property damage, personal injury or even death.
- ROADMASTER will not be responsible for any damage or injury resulting from any modification or alteration.
- Check ALL the fasteners for tightness before and after road testing the vehicle.
- Do not use this document for custom fabrication, as it may not show all parts or structural components.
- Do not use an air impact wrench when re-installing bolts, as stripped threads may result.
- This anti-sway bar is only warranted for the original installation. Installing a used anti-sway bar on another vehicle is not recommended and will void the warranty.

PARTS LIST

Part #1139-218



ITEM	QTY	DESCRIPTION	PART NUMBER
1	4	BUSHING	205202-10
2	4	BUSHING	205209-00
3	2	BUSHING	205454-10
4	4	BUSHING SLEEVE	205503-00
5	2	5/8-11 x 4" BOLT - GRADE 8	350158-50
6	2	5/8-11 NYLON INSERT LOCK NUT	350263-20
7	2	5/8" SAE WASHER	350348-80
8	1	ANTI-SWAY BAR	580584-00
9	2	END LINK	B404
10	2	BUSHING CLAMP	B989
11	2	END LINK BRACKET	B1086
12	1	AQUALUBE	400011-30

INSTALLATION

The following instructions must be followed in the order listed to ensure a proper installation and to preserve the ROADMASTER warranty.

1. Remove the factory anti-sway bar and endlinks.

Loosen the endlink bolts and allow the anti-sway bar to hang by its center section. Remove the center section saddle brackets, by loosening the bolts that hold the saddle brackets to the axle. Lower the bar to the ground. Remove the endlinks and endlink brackets by removing the two M14 metric bolts (Figure 1). *Note: Retain the M14 factory frame bracket and bushing clamps for replacement in a future step.*

WARNING

Loosening the saddle bracket bolts will release the anti-sway bar. The anti-sway bar is heavy, and may cause property damage or personal injury if it falls on equipment, engine components or any part of your body. Ensure that the anti-sway bar is supported and that you are out of the way when removing the bolts. Failure to follow these instructions may cause property damage,

Figure 1

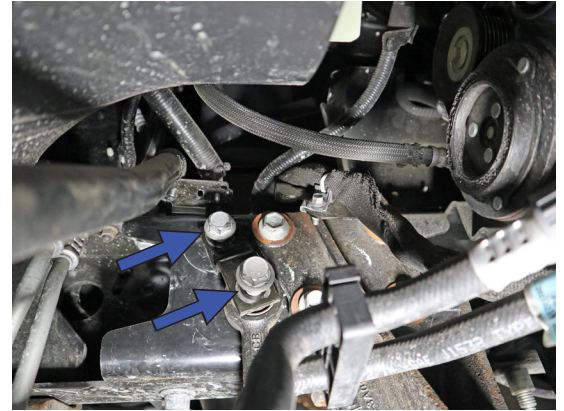


Figure 2

2. Install the frame brackets.

On each side, using the shorter M14 factory frame bracket bolt you removed in step 1 (Figure 2). Leave the bolts loose for now.

3. Install the shackles.

On each side, install the B1086 shackle between the frame and the frame bracket using the longer M14 bolt removed in step 1. Secure both bolts on each side using Loctite Red.

4. Hang the sway bar from the endlinks.

Using the supplied 5/8" hardware, hang the sway bar from the B404 endlinks. Leave the hardware loose for now.

5. Prepare the sway bar for installation.

Lubricate the bushings using the supplied AquaLube. With the assistance of a second person, rotate the sway bar into place. Install the bushings and bushing clamps and secure in place using the factory hardware you removed in step 1 (Figure 3).

Then, tighten the 5/8" shackle bolts from the previous step (Figure 4 — next page).

continued on next page



Figure 3



INSTALLATION

The following instructions must be followed in the order listed to ensure a proper installation and to preserve the ROADMASTER warranty.

6. Test drive the vehicle.

Drive the vehicle and then carefully check all the fasteners for proper tightness.

WARNING

After road testing, re-check all fasteners for proper tightness — if a fastener has worked loose or fallen off, re-tighten or replace it. Without all kit components properly tightened or in place, the anti-sway bar will not stabilize the vehicle at full capacity, which may cause reduced cornering ability or other reductions in vehicle handling or performance.

Failure to follow these instructions may result in property damage, personal injury or even death.

Figure 4

