



# Installation Instructions

Thank you for purchasing this anti-sway bar kit. Please read through these instructions before installation.

## Factory Replacement Rear Anti-Sway Bar Kit

part #1209-146  
2" diameter



## INTRODUCTION

Thank you for purchasing this anti-sway bar kit. This kit is designed to improve the handling characteristics of your vehicle by reducing the body roll and balancing the weight transfer during cornering. The anti-sway bar kit is engineered for long life and trouble-free performance.

All the hardware needed for installation is included in this kit. Refer to the PARTS LIST in these instructions to identify the parts.

## SUGGESTED TOOLS

The following tools are suggested to complete the installation procedures:

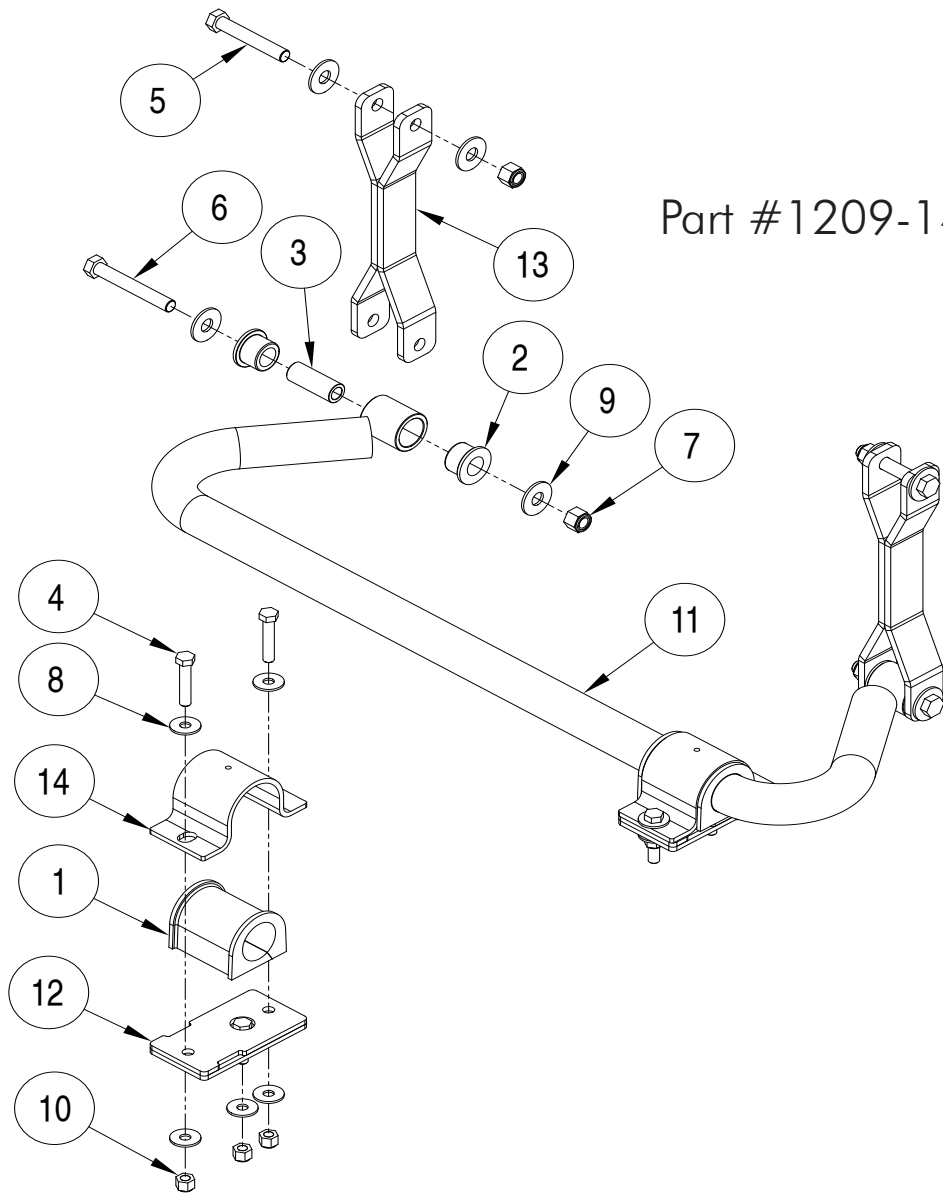
- General hand tools
- Drill and 1/2" drill bit
- Torque wrench

### WARNING

**Failure to follow these instructions can result in property damage, personal injury or even death.**

- If raising the vehicle to install the anti-sway bar, always support the vehicle with jack stands at both frame rails or at the rear axle before working underneath. Ensure that the jack stands are securely positioned, and are rated at or above the weight of the vehicle.
- The installer must read the instructions and use all bolts and parts supplied. Use only the parts supplied by ROADMASTER to install this kit.
- Minor modifications are sometimes necessary due to slight vehicle variations, even for the same year, make and model.
- Regardless of year, make and model, a wide range of options for specific applications may or may not interfere with the installation. It is the installer's responsibility to make certain that equipment is not damaged once the suspension solution travels through the full range of motion. Failure to ensure adequate clearance could result in non-warranty property damage, personal injury or even death.
- If running changes were made by the manufacturer after this kit was designed, there may be weldments, braces, gussets, or other structural items which interfere with the installation. It is the installer's responsibility to allow for these running changes without sacrificing the structural integrity of the anti-sway bar. Failure to securely fasten the anti-sway bar could result in property damage, personal injury or even death.
- ROADMASTER will not be responsible for any damage or injury resulting from any modification or alteration.
- Check ALL the fasteners for tightness before and after road testing the vehicle.
- Do not use this document for custom fabrication, as it may not show all parts or structural components.
- Do not use an air impact wrench when re-installing bolts, as stripped threads may result.
- This anti-sway bar is only warranted for the original installation. Installing a used anti-sway bar on another vehicle is not recommended and will void the warranty.

# PARTS LIST



Part #1209-146

ITEM	QTY	DESCRIPTION	PART NUMBER
1	2	BUSHING	205207-10
2	4	BUSHING	205451-00
3	2	BUSHING SLEEVE	205532-00
4	4	1/2-13 x 2 1/2" BOLT - GRADE 8	350099-80
5	2	5/8-11 x 4" BOLT - GRADE 8	350158-50
6	2	5/8-11 x 4 1/2" BOLT - GRADE 8	350159-20
7	4	5/8-11 NYLON INSERT LOCK NUT - GRADE 8	350263-20
8	10	1/2" FLAT WASHER	350308-00
9	8	5/8" FLAT WASHER	350312-00
10	6	1/2-13 NYLON INSERT LOCK NUT - GRADE 8	350735-00
11	1	ANTI-SWAY BAR	580566-00
12	2	AXLE PLATE	B1134
13	2	END LINK	B1135
14	2	BUSHING CLAMP	B913
15	1	LOCTITE	200544-00
16	1	AQUALUBE	400011-30

# INSTALLATION

The following instructions must be followed in the order listed to ensure a proper installation and to preserve the ROADMASTER warranty.

**Note: Loctite must be used on all bolts in this kit.**

**Figure 1**

**1. Remove the factory anti-sway bar.**

You will also remove the endlinks and bushing clamps.



## ⚠ WARNING

The anti-sway bar is heavy, and may cause property damage or personal injury if it falls on equipment, engine components or any part of your body. Ensure that the anti-sway bar is supported and that you are out of the way when removing the brackets.

Failure to follow these instructions may cause property damage, personal injury or even death.

**2. Enlarge the factory bushing clamp mounts to 1/2".**

Drill out or die grind the factory bushing clamp bolt holes to 1/2" to accommodate the new hardware.

**Figure 2**

**3. Install the axle bracket.**

Install the B1134 axle bracket on top of the existing factory axle bracket, with the welded stud in the rearmost hole of the factory mount (Fig.1). Leave it finger loose for now.



**4. Prepare the RSS anti-sway bar for installation.**

Set the sway bar on the bushing clamp bracket to figure out placement for the bushings. Lube the bushings and install onto the bar. Place the B913 bushing clamps over the bushings. Then, for each clamp, place the two 1/2" flat washers over the two 1/2" x 2 1/2" bolts. Bolt through the bushing clamp, B1134 axle plate, and finish with 1/2" flat washers and 1/2" lock nuts. Use a 1/2" lock washer and a third 1/2" nut over the remaining bushing clamp mount (Fig.1 and 2). *Note: It helps to lift the front part of the B1134 to install the forwardmost bolt, due to clearance issues with the air bags.*

**Figure 3**

**5. Install the endlinks to the factory frame brackets.**

Use the 5/8" x 4" bolts and 5/8" flat washers to attach the B1135 endlinks to the factory frame brackets. Finish with 5/8" flat washers and 5/8" lock nuts (Fig.3).



continued on next page

# INSTALLATION

## 6) Install the sway bar to the endlinks.

Now, install the bushings in the sway bar ends using the drawing on page 2 as a reference. Then, swing the sway bar arms up and secure them to the endlinks using 5/8" x 4 1/2" bolts and 5/8" flat washers. Finish with the 5/8" flat washers and 5/8" lock nuts (Fig.4).

## 7. Tighten the endlink bolts until they are snug.

*Note: Do not over-tighten the bolts.*

## 8. Tighten the remaining bolts.

*Note: If jacks were used for this installation, ensure the vehicle is at ride height before torquing bolts.*

## 9. Test drive the vehicle.

Drive the vehicle and then carefully check all the fasteners for proper tightness. Figure 5 shows the completed installation.

**Figure 4**



**Figure 5**

