



Installation Instructions

Replacement Endlink Kit for Ford E250/350/450 Front Anti-Sway Bars

part #590184-00



SUGGESTED TOOLS

The following tools are suggested to complete the installation procedures:

- Normal hand tools

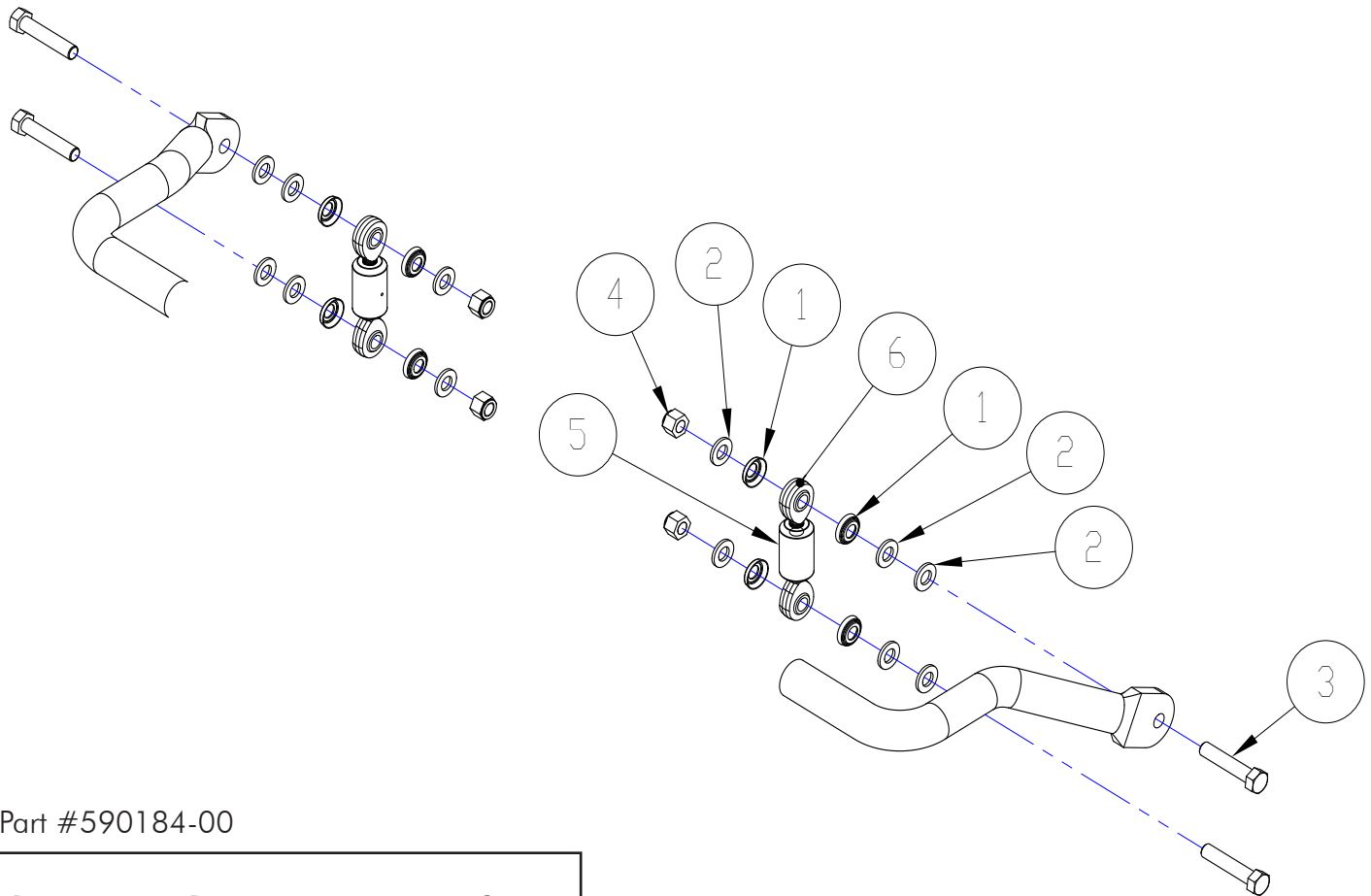
WARNING

Failure to follow these instructions can result in property damage, personal injury or even death.

- If raising the vehicle to install the anti-sway bar, always support the vehicle with jack stands at both frame rails or at the rear axle before working underneath. Ensure that the jack stands are securely positioned, and are rated at or above the weight of the vehicle.
- The installer must read the instructions and use all bolts and parts supplied. Use only the parts supplied by ROADMASTER to install this kit.
- Minor modifications are sometimes necessary due to slight vehicle variations, even for the same year, make and model.
- Regardless of year, make and model, a wide range of options for specific applications may or may not interfere with the installation. It is the installer's responsibility to make certain that equipment is not damaged once the suspension solution travels through the full range of motion. Failure to ensure adequate clearance could result in non-warranty property damage, personal injury or even death.
- If running changes were made by the manufacturer after this kit was designed, there may be weldments, braces, gussets, or other structural items which interfere with the installation. It is the installer's responsibility to allow for these running changes without sacrificing the structural integrity of the anti-sway bar. Failure to securely fasten the anti-sway bar could result in property damage, personal injury or even death.
- ROADMASTER will not be responsible for any damage or injury resulting from any modification or alteration.
- Check ALL the fasteners for tightness before and after road testing the vehicle.
- Do not use this document for custom fabrication, as it may not show all parts or structural components.
- Do not use an air impact wrench when re-installing bolts, as stripped threads may result.
- This anti-sway bar is only warranted for the original installation. Installing a used anti-sway bar on another vehicle is not recommended and will void the warranty.

INSTALLATION

The following instructions must be followed in the order listed to ensure a proper installation and to preserve the ROADMASTER warranty.



Part #590184-00

Part #	Description	Qty
1. 200133-00	Seal	8
2. 350308-20	M12 Flat washer	12
3. 350704-50	1/2" x 2 1/2" Bolt	4
4. 350736-00	1/2" Nylock nut	4
5. A-006159B	End link center	2
6. A-006160A	Heim joint	2
7. 200544-00*	Loctite	1

*not pictured

INSTALLATION

The following instructions must be followed in the order listed to ensure a proper installation and to preserve the ROADMASTER warranty.

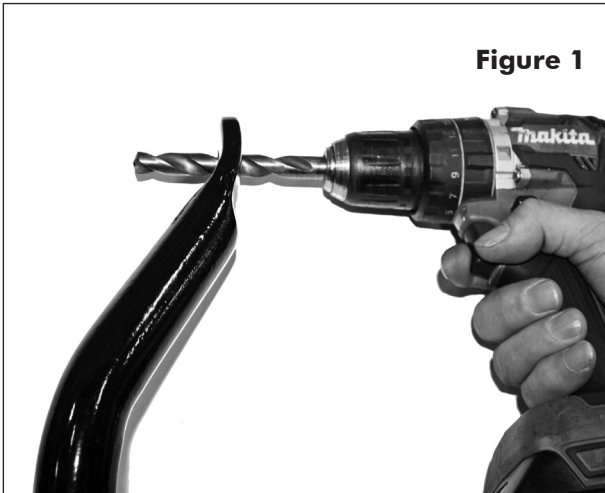


Figure 1

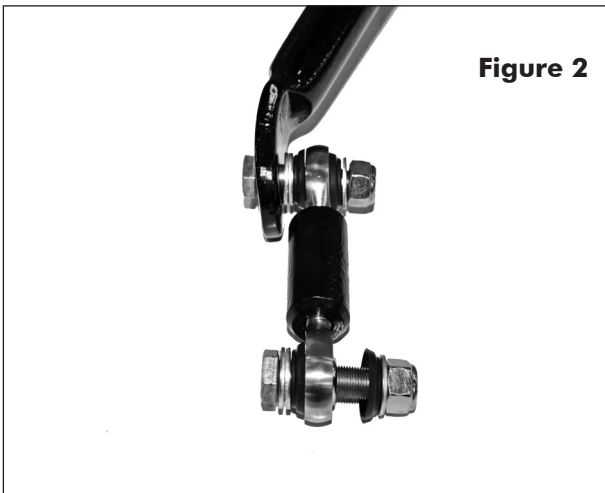


Figure 2

- 1. Remove the endlink on each side of the vehicle.**
Prepare the supplied endlinks (Figure 1).
- 2. Enlarge the holes, if required.**
Due to manufacturing variances, you may need to enlarge the hole in each end of the sway bar and the factory hole in the axle on each side so they can accommodate the new 1/2" bolts. If this is the case, use a 1/2" drill bit (Figure 1).
- 3. Disassemble, install and reassemble the endlinks.**
On each endlink, remove all washers, seals and nuts. Bolt through the anti-sway bar and the axle hole you drilled in the previous step. Then, place the hardware over the bolt in the following way: two washers, a seal, the endlink, another seal, one more washer, and the Nylock nut. Refer to the drawing on page 2 to ensure that you reassemble the endlinks correctly.
- 4. Torque the nuts to 90 ft./lbs.**
Figure 2 shows the correct installation. Then, tighten the endlink bolts to 90 ft./lbs., using Loctite Red on the lock nuts.
Caution: if you do not torque the endlink nuts to 90 ft./lbs. and use Loctite on the nut, it could cause non-warranty damage to the endlink. Under no circumstances should you use air tools to torque the endlink bolts and nuts.
- 5. Test drive the vehicle and re-check the fasteners.**

WARNING

After road testing, re-check all fasteners for proper tightness — if a fastener has worked loose or fallen off, re-tighten or replace it. Without all kit components properly tightened or in place, the anti-sway bar will not stabilize the vehicle at full capacity, which may cause reduced cornering ability or other reductions in vehicle handling or performance.

Failure to follow these instructions may result in property damage, personal injury or even death.