



## Trac 45/5500 Chassis TruTrac Bar

(for diesel engines only)

### Installation Instructions

**The following instructions must be followed in the order listed to ensure a proper installation and to preserve the ROADMASTER warranty.**

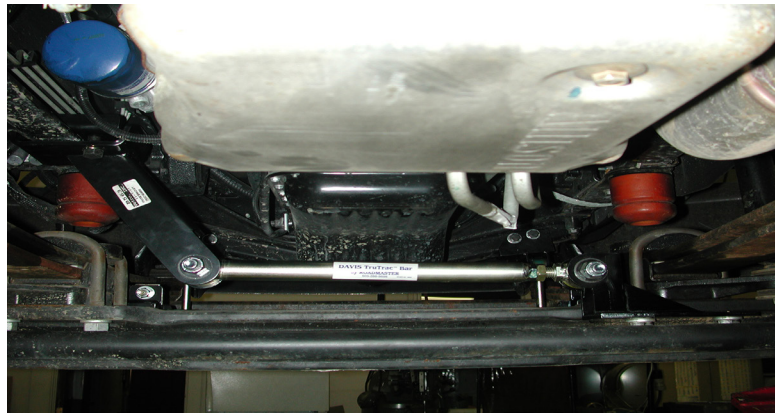
Thank you for purchasing the TruTrac Bar by ROADMASTER. This product has been developed to enhance the handling characteristics of the Kodiak 4500-5500. Please be sure to properly identify your chassis to make sure this is the correct bar for your application.

**1.** Ensure that the suspension is loaded before proceeding. Move the coach to a level, flat service. Drive the coach onto approximately 4" blocks. Set the brake and chock the wheels. Block off adequate space at the front of the vehicle to work.

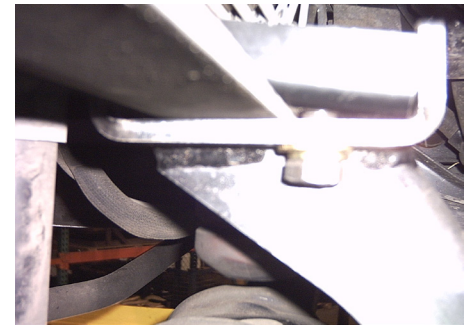
**2.** Begin by removing the nuts on the rear u-bolt on the passenger side of the front axle. Place the axle bracket on the u-bolt as shown in Figure 1, and replace and torque the nuts that were previously removed to 140-150 ft.-lbs. *Note: Do not reinstall factory washers.*

**3.** Place the frame bracket on the bottom rail of the driver side frame rail in front of the axle. Locate the frame bracket over the shock mount bracket on the outside of the frame, and loosely secure it with the nut plate and the supplied 5/8" x 1 3/4" bolts, flat washers and lock washers. See Figure 2.

**Figure 1**



**Figure 2**



-CONTINUED ON THE NEXT PAGE-

### **⚠ WARNING**

**Failure to follow these instructions can result in property damage, personal injury or even death.**

- If raising the vehicle to install the anti-sway bar, always support the vehicle with jack stands at both frame rails or at the rear axle before working underneath. Ensure that the jack stands are securely positioned, and are rated at or above the weight of the vehicle.
- The installer must read the instructions and use all bolts and parts supplied. Use only the parts supplied by ROADMASTER to install this kit.
- Minor modifications are sometimes necessary due to slight vehicle variations, even for the same year, make and model.
- Regardless of year, make and model, a wide range of options for specific applications may or may not interfere with the installation. It is the installer's responsibility to make certain that equipment is not damaged once the suspension solution travels through the full range of motion. Failure to ensure adequate clearance could result in non-warranty property damage, personal injury or even death.

- If running changes were made by the manufacturer after this kit was designed, there may be weldments, braces, gussets, or other structural items which interfere with the installation. It is the installer's responsibility to allow for these running changes without sacrificing the structural integrity of the anti-sway bar. Failure to securely fasten the anti-sway bar could result in property damage, personal injury or even death.
- ROADMASTER will not be responsible for any damage or injury resulting from any modification or alteration.
- Check ALL the fasteners for tightness before and after road testing the vehicle.
- Do not use this document for custom fabrication, as it may not show all parts or structural components.
- Do not use an air impact wrench when re-installing bolts, as stripped threads may result.
- This anti-sway bar is only warranted for the original installation. Installing a used anti-sway bar on another vehicle is not recommended and will void the warranty.



# TruTrac™ by ROADMASTER

4. With the coach at normal ride height, install the adjustable end of the rod assembly to the axle bracket. Use one of the supplied 3/4" x 4" bolts and nut, and assemble loosely. Adjust the length of the rod while adjusting the placement of the frame bracket and nut plate until you are able to assemble the supplied 3/4" x 4" bolt and nut.

5. Tighten the 5/8" bolts and nuts on the frame bracket and retaining plate to 150 ft./lbs. Tighten the 3/4" pivot bolts so that the Trac bar unit is held securely but ensure that the Trac bar unit can pivot on both bolts without sticking. Over-tightening these bolts can cause noise while driving and may damage the bushings or Trac bar unit. Finally, tighten the jam nut on the Trac bar unit.

 **WARNING**

After road testing, re-check all fasteners for proper tightness — if a fastener has worked loose or fallen off, re-tighten or replace it. Without all kit components properly tightened or in place, the TruTrac Bar will not stabilize the vehicle at full capacity, which may cause reduced cornering ability or other reductions in vehicle handling or performance.

Failure to follow these instructions may result in property damage, personal injury or even death.

 **WARNING**

**The bar is not a load-bearing component**

Do not tow or hoist the vehicle using the bar or its mounting brackets as attachment points. The bar is not designed to carry the weight of the vehicle and may collapse, which will damage the bar components, the suspension, or other components. The vehicle will detach or fall, which may cause severe personal injury.

Failure to follow these instructions may result in property damage, personal injury or even death.

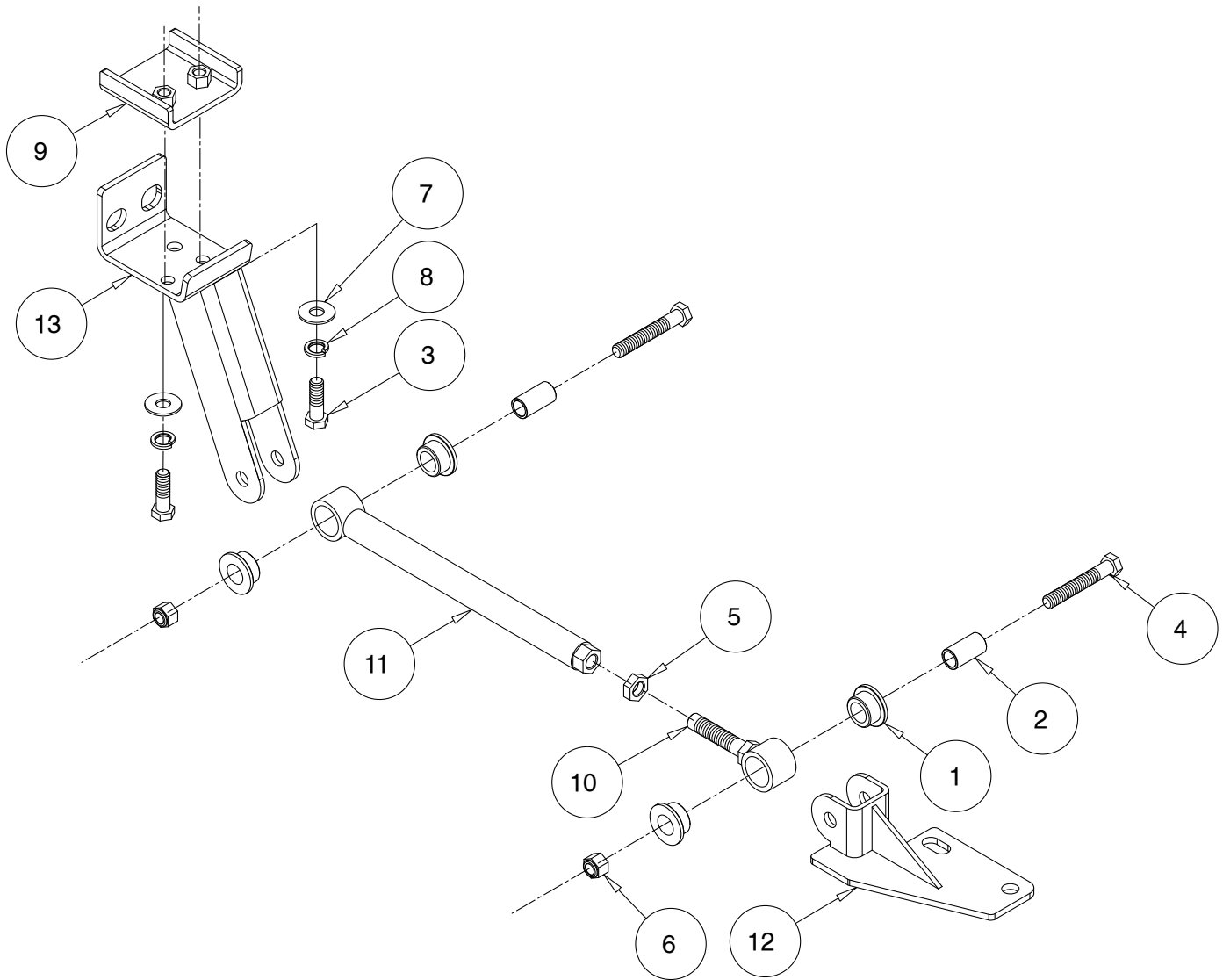
**BOLT TORQUE REQUIREMENTS**

STANDARD BOLTS			U-BOLTS	
Thread	Grade	Torque	Thread	Torque
3/8.....	5.....	30 lb-ft	3/8-24 .....	35 lb-ft
7/16.....	5.....	50 lb-ft	1/2-20 .....	70 lb-ft
1/2.....	5.....	75 lb-ft	5/8-18 .....	140 lb-ft
5/8.....	5.....	140 lb-ft	3/4-16 .....	250 lb-ft
			7/8-14 .....	400 lb-ft

*Note: Endlink bolts use grommets and should NOT be torqued. Tighten these bolts by hand until the grommet starts to deform. Also, these torque values are intended as general guidelines. Roadmaster does not warrant this information to be accurate for all applications and disclaims all liability for any claims or damages which may result from its use.*



# TruTrac™ by ROADMASTER



ITEM	QTY	MATERIAL	NAME
1	4	BUSHING	205209-00
2	2	BUSHING SLEEVE	205504-00
3	2	5/8-11 X 2" BOLT - GRADE 8	350453-00
4	2	3/4-10 X 4" BOLT	350185-00
5	1	3/4-10 JAM NUT	350264-20
6	2	3/4-10 NYLON INSERT LOCK NUT	350265-00
7	2	5/8" FLAT WASHER	350731-00
8	2	5/8" LOCK WASHER	350734-00
9	1	RETAINING PLATE	B529
10	1	ROD END	B532
11	1	ROD END	B533
12	1	FRAME BRACKET	B562
13	1	FRAME BRACKET	B563