



## Trac S2RV Front Trac Rod Kit

### Installation Instructions

The following instructions must be followed in the order listed to ensure a proper installation and to preserve the ROADMASTER warranty.

**Thank you for purchasing this TruTrac Bar by ROADMASTER. This product has been developed to enhance the handling characteristics of your S2RV chassis. Please be sure to properly identify your chassis to make sure this is the correct bar for your application.**



**Figure 1**

1. Ensure that the suspension is loaded before proceeding. Now, place the B563 frame bracket on the outside of the bottom rail on the driver's side frame rail behind the axle and loosely secure it with the B529 retaining plate and supplied 5/8" x 2" bolts, 5/8" flat washers and 5/8" lock washers.



-CONTINUED ON THE NEXT PAGE-

### **⚠ WARNING**

**Failure to follow these instructions can result in property damage, personal injury or even death.**

- If raising the vehicle to install the TruTrac bar, always support the vehicle with jack stands at both frame rails or at the rear axle before working underneath. Ensure that the jack stands are securely positioned, and are rated at or above the weight of the vehicle.
- The installer must read the instructions and use all bolts and parts supplied. Use only the parts supplied by ROADMASTER to install this kit.
- Minor modifications are sometimes necessary due to slight vehicle variations, even for the same year, make and model.
- Regardless of year, make and model, a wide range of options for specific applications may or may not interfere with the installation. It is the installer's responsibility to make certain that equipment is not damaged once the suspension solution travels through the full range of motion. Failure to ensure adequate clearance could result in non-warranty property damage, personal injury or even death.
- If running changes were made by the manufacturer after this kit was designed, there may be weldments, braces, gussets, or other structural items which interfere with the installation. It is the installer's responsibility to allow for these running changes without sacrificing the structural integrity of the TruTrac bar. Failure to securely fasten the TruTrac bar could result in property damage, personal injury or even death.
- ROADMASTER will not be responsible for any damage or injury resulting from any modification or alteration.
- Check ALL the fasteners for tightness before and after road testing the vehicle.
- Do not use this document for custom fabrication, as it may not show all parts or structural components.
- Do not use an air impact wrench when re-installing bolts, as stripped threads may result.
- This TruTrac bar is only warranted for the original installation. Installing a used TruTrac bar on another vehicle is not recommended and will void the warranty.



# TruTrac™ by ROADMASTER

2. Remove the nuts on the rear U-bolt on the passenger side of the front axle. Place the B562 axle bracket on the U-bolt as shown in Figure 2, and replace and torque the nuts that were previously removed to 140-150 ft.-lbs. *Note: The view in Figure 2 is shown from the bottom of the frame bracket.*

3. Insert the 3/4" x 4" bolts through the end of the Trac Rod so that they face the front of the vehicle. Adjust the bar until both bolts easily slide through the bracket and the bar, and then finish with 3/4" Nylock nuts. Tighten both of the 3/4" x 4" bolts only enough so that the bolts are snug in the bracket but do not put pressure on the ends of the bar.

4. Tighten the jam nut on the bar. Check to make sure that no wires, hoses, or lines are being obstructed and then test drive. The installation is now complete, and should appear as shown in Figure 3.

Figure 2



Figure 3



### BOLT TORQUE REQUIREMENTS

STANDARD BOLTS			U-BOLTS	
Thread	Grade	Torque	Thread	Torque
3/8.....	5.....	30 lb-ft	3/8-24 .....	35 lb-ft
7/16.....	5.....	50 lb-ft	1/2-20 .....	70 lb-ft
1/2.....	5.....	75 lb-ft	5/8-18 .....	140 lb-ft
5/8.....	5.....	140 lb-ft	3/4-16 .....	250 lb-ft
			7/8-14 .....	400 lb-ft

*Note: Endlink bolts use grommets and should NOT be torqued. Tighten these bolts by hand until the grommet starts to deform. Also, these torque values are intended as general guidelines. Roadmaster does not warrant this information to be accurate for all applications and disclaims all liability for any claims or damages which may result from its use.*

## ⚠ WARNING

After road testing, re-check all fasteners for proper tightness — if a fastener has worked loose or fallen off, re-tighten or replace it. Without all kit components properly tightened or in place, the TruTrac Bar will not stabilize the vehicle at full capacity, which may cause reduced cornering ability or other reductions in vehicle handling or performance.

Failure to follow these instructions may result in property damage, personal injury or even death.

## ⚠ WARNING

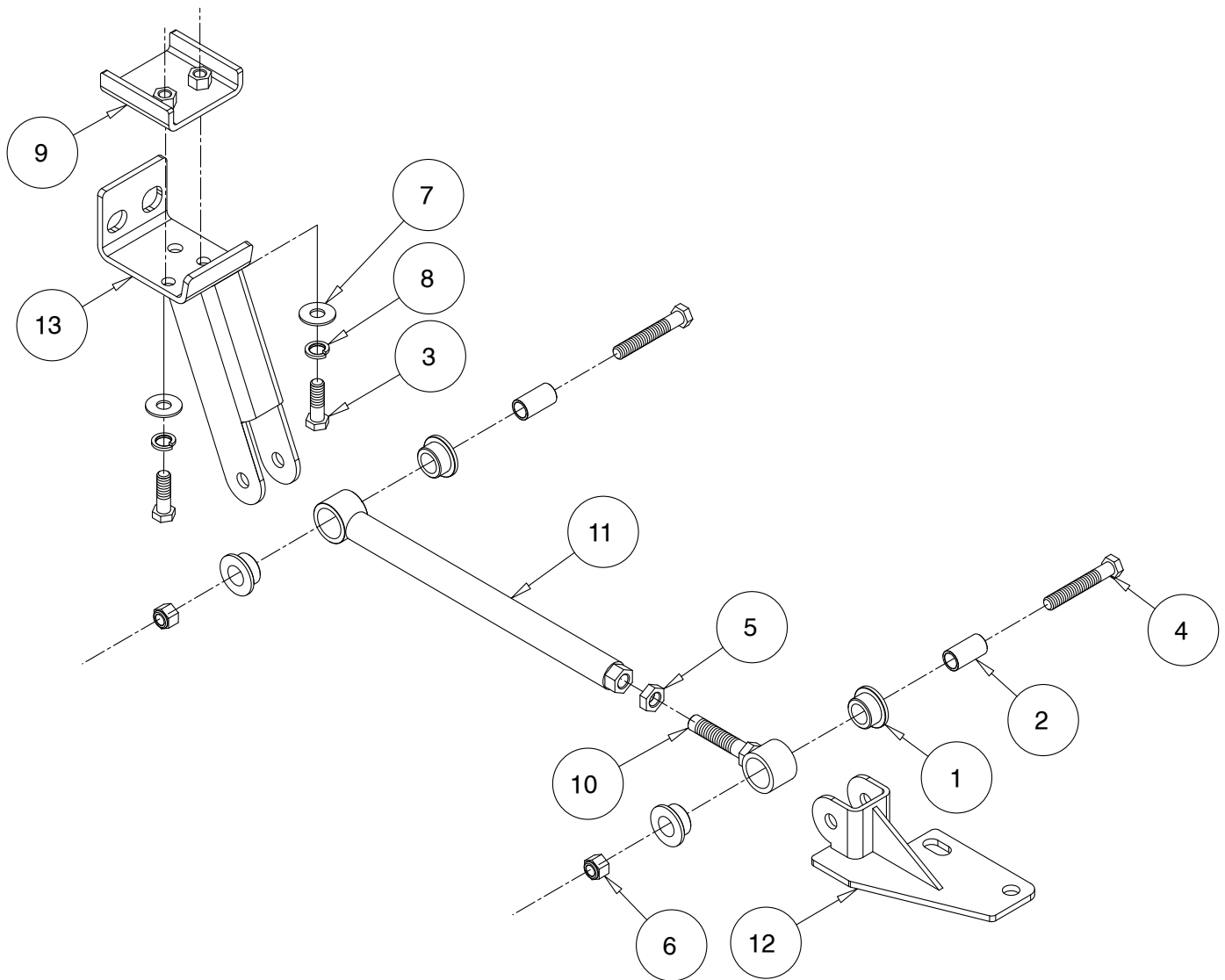
### The bar is not a load-bearing component

Do not tow or hoist the vehicle using the bar or its mounting brackets as attachment points. The bar is not designed to carry the weight of the vehicle and may collapse, which will damage the sway bar components, the suspension, or other components. The vehicle will detach or fall, which may cause severe personal injury.

Failure to follow these instructions may result in property damage, personal injury or even death.



# TruTrac™ by ROADMASTER



ITEM	QTY	MATERIAL	NAME
1.....	4.....	BUSHING .....	205209-00
2.....	2.....	BUSHING SLEEVE .....	205504-00
3.....	2.....	5/8-11 X 2" BOLT - GRADE 8 .....	350453-00
4.....	2.....	3/4-10 X 4" BOLT .....	350185-00
5.....	1.....	3/4-10 JAM NUT .....	350264-20
6.....	2.....	3/4-10 NYLON INSERT LOCK NUT .....	350265-00
7.....	2.....	5/8" FLAT WASHER .....	350731-00
8.....	2.....	5/8" LOCK WASHER .....	350734-00
9.....	1.....	RETAINING PLATE .....	B529
10.....	1.....	ROD END .....	B532
11.....	1.....	ROD END .....	B1140
12.....	1.....	AXLE BRACKET.....	B562
13.....	1.....	FRAME BRACKET .....	B563